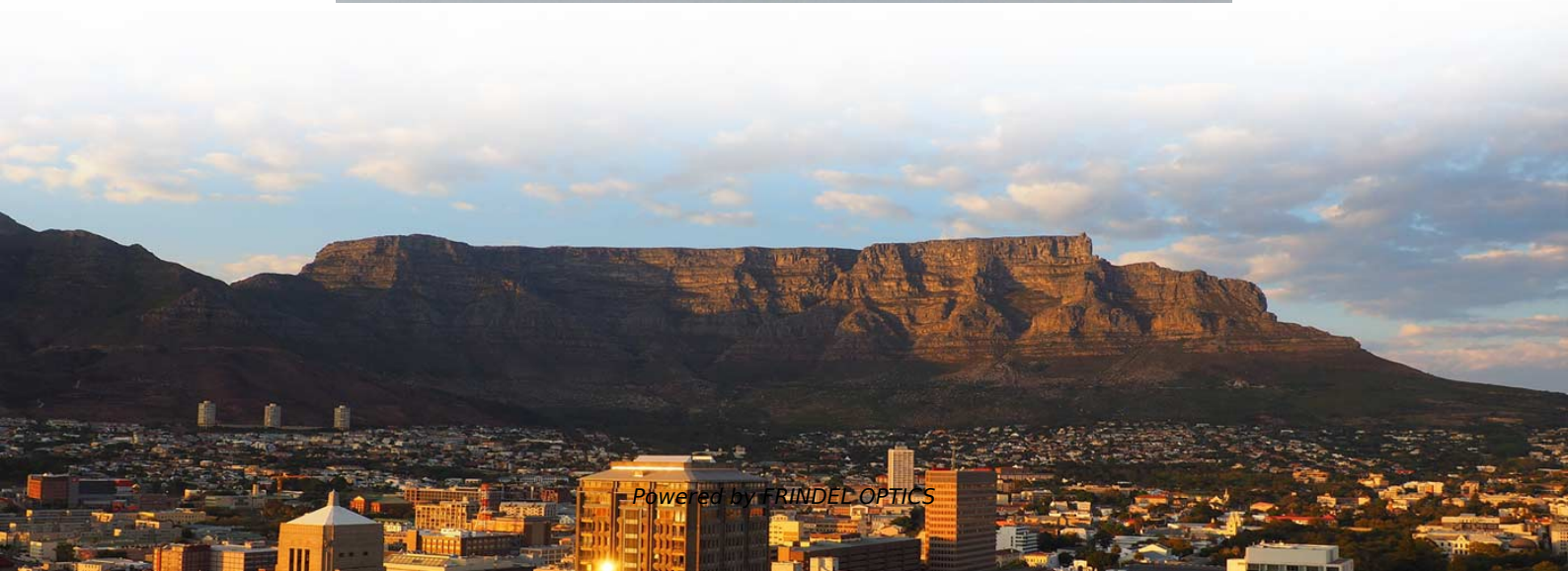


How long should the terminal box tail wire be





Overview

How long are the existing tails?

Hard to measure exactly, but about half a metre. The "golden rule" is that you are not "allowed" the tails to be more than three meters in total length between the meter and the CU without fitting a switch fuse. Although there isn't a specific document titled "meter tail regulations," various sections within BS7671 pertain to the installation of cables, including the essential meter tails. Note, in Fig 2 below, the diverse range of conductor terminations even before meter tails going terminal of RCD and supply side of circuit-breaker regular checks of their accuracy and rec Fig 4 insulation - many cable strippers have an. It allows smaller distances but requires insulated terminations (like Raychem tape). Not acceptable are connections that use only solder or twist-on connectors (wire nuts) [See NFPA 79-2012 Electrical Standard for Industrial Machinery, National Fire Protection Association, 2012, Section 13. Mechanical compression lugs have a set screw that tightens on the wire (see Figure 1).



How long should the terminal box tail wire be



Meter Tail Regulations 2025

If you are installing a new consumer unit, or completing electrical inspections, you'll need to be familiar with the meter tail regulations in 2025

[Contact Us](#)

Guidance for installers when making connections in consumer units

This guidance produced by Electrical Safety First and BEAMA, provides practical advice and guidance on achieving safe and reliable connections for devices and terminal bars within consumer units and



[Contact Us](#)



length of pigtails at box , Information by Electrical Professionals for

The pigtails can be any length you want. The requirement is for the conductors entering the box not the pigtails. Your mention of length of pigtails and measuring the wire from the connector

[Contact Us](#)

How To Install Meter Tails To Consumer Units

For the meter tails to be installed in a wall and comply with the regulations, if they do not adhere to the regulations I've referred to then they



Motor terminal box connection methods, procedures

These can be configured with anywhere from one to six or more barrels for wire. The set screw is tight-ened to the National Electrical Code (NEC) recommended torque values as shown in Table 1 to

[Contact Us](#)

Terminal Junction Box Wiring

This is why you are likely to find a terminal box in huge industrial complexes that require safe connections to high voltage for their operations to run smoothly.

[Contact Us](#)



MOTOR TERMINAL BOX Cable Connection

hello, i would like to ask about wiring methodology. i have a motor terminal box, with 2 holes, 2xM63 aparently i am using a single core cable. and

[Contact Us](#)





Terminal block production and installation tutorial: from beginner to

Terminal blocks are the core components of electrical connections, widely used in distribution boxes, control cabinets, and equipment circuits. Mastering its production and installation techniques can

[Contact Us](#)



Do pigtails count for code length for electrical outlets? : r

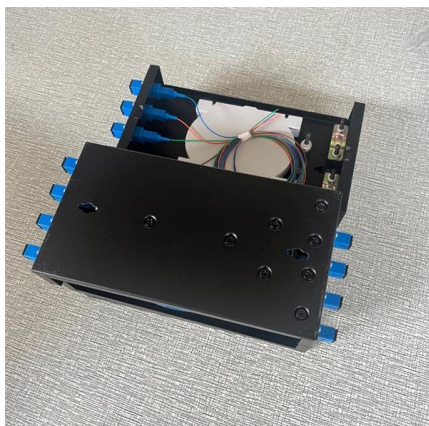
At least 150 mm (6 in.) of free conductor, measured from the point in the box where it emerges from its raceway or cable sheath, shall be left at each outlet, junction, and switch point for splices or the

[Contact Us](#)

How Much Wire Should Be Left in an Electrical Box?

Once wired, the remaining slack must be carefully managed to fit back into the box. The excess wire should not be stuffed haphazardly into the box, as this can damage the insulation or loosen the

[Contact Us](#)



Correct Method To Extend Meter Tails

The "golden rule" is that you are not "allowed" the tails to be more than three meters in total length between the meter and the CU without fitting a switch fuse.

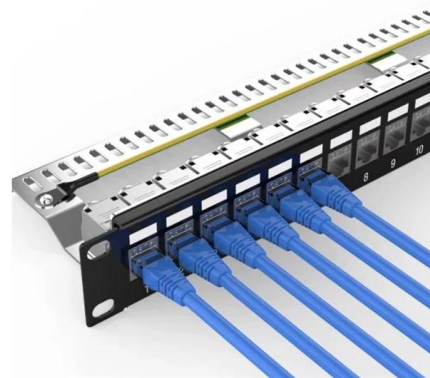
[Contact Us](#)

TERMINAL BOXES



8150 Series Stainless Steel Terminal Boxes
Designed to meet the demands of both industrial and hazardous environments, the 8150 Series is your all-in-one solution, no matter your industry. We've

[Contact Us](#)



Say No to Terminal Cups! How to connect wire to a subwoofer box

So you have built a beautiful subwoofer box, its good and strong with plenty of bracing, and your cuts are all nice and precise so the seams of the box won't leak any air. You are ready to

[Contact Us](#)



electrical

I think it's just easier for the electrician to wire both parts of the outlet, rather than getting a small piece of wire, twist, affix nut, and attach to the outlet. It also takes

[Contact Us](#)



Motor terminal box connection methods and procedures

Jim Bryan (retired) EASA Technical Support Specialist As with most tasks, there are many ways to terminate motor leads and each one has a following who believe it is the best method. Here we will

[Contact Us](#)



Methods of Selecting, Sizing, Installing, and



Supporting Terminal Boxes

1.1 This engineering standard defines the methods of selecting, sizing, installing, and supporting terminal boxes. SCOPE 2.1 This standard applies to all terminal box installations. While directed toward Air

[Contact Us](#)



Tale of tails: how long can a tail be?

The issue is not how long can your tails be, but the DNO will only allow THEIR fuse to protect tails up to 3 metres long. So if you want longer, do as

[Contact Us](#)

Wire Terminal Connectors: Choose the Right Type and

Selecting the correct wire terminal connectors is essential for ensuring safe, efficient, and long-lasting electrical connections. Engineers and

[Contact Us](#)



A Beginner's Guide to Properly Wiring DIN Rail Terminal

Here are the most important tools for wiring DIN rail terminal blocks: Wire strippers: Remove insulation from wires without damaging them.

[Contact Us](#)

How to Pigtail an Outlet for a Safer



Connection

A pigtail is a simple wiring technique used when installing electrical outlets, switches, or other devices inside a junction box. This method involves connecting the circuit's main wires to a

[Contact Us](#)



Motor terminal box requirement , Eng-Tips

The distance between the shortest terminal point (u) to the top of the motor terminal box for my chiller is 390mm. But my client is saying the minimal

[Contact Us](#)



Electrical Pigtails

Q. When does the electrical code require pigtails for connecting devices in residential wiring?A. Ben Giles, licensed electrician and owner of

[Contact Us](#)



Terminal junction box wiring steps

The safest and most efficient way to wire a terminal junction box: a professional step-by-step guide.

[Contact Us](#)



Contact Us

For datasheets, pricing, or custom fiber access solutions, please visit:
<https://frindel.es>