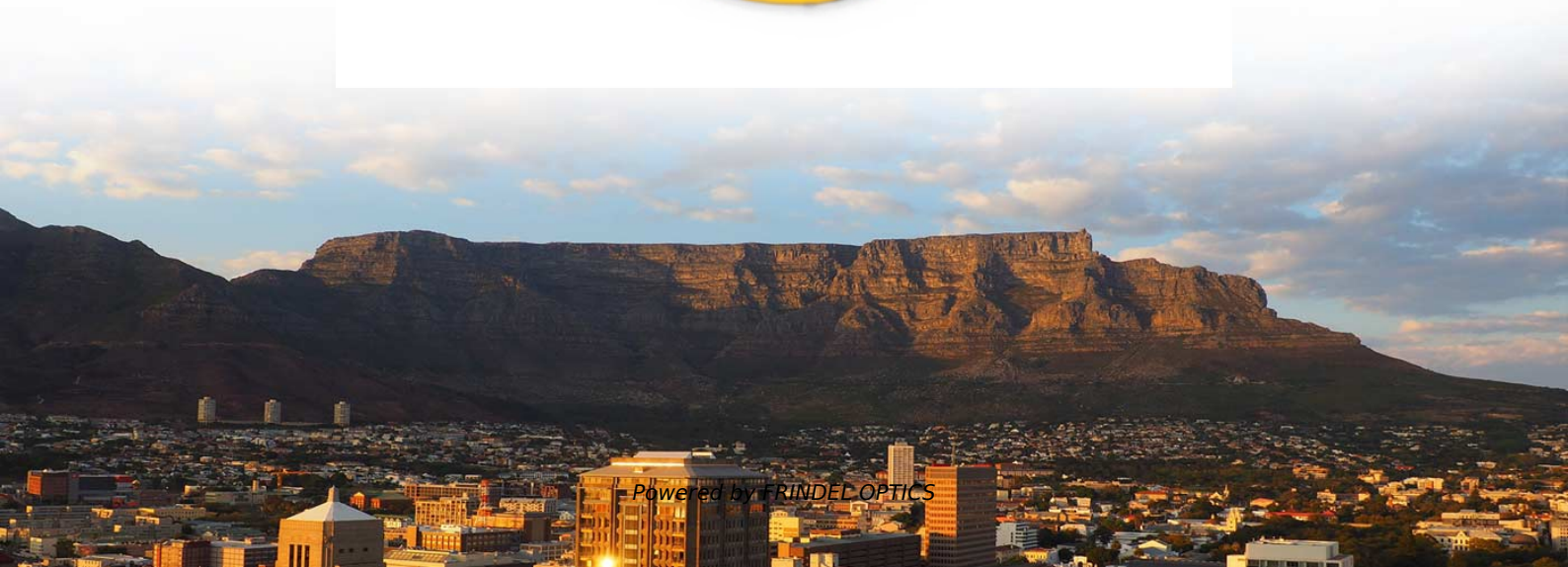


# **How high should the wall-mounted electrical distribution box be installed**





## Overview

---

The proper installation of a distribution box involves placing it at the right height to ensure safety and convenience. Ensure safe placement: install in dry, accessible areas with good ventilation and at appropriate height (typically ~1. A statute from the latest National Electrical Code declares that breakers, electrical boxes, and other related equipment that are important in operating electrical appliances must be installed within an area with sufficient clearance.



## How high should the wall-mounted electrical distribution box be installed

---



### The height requirement of distribution box

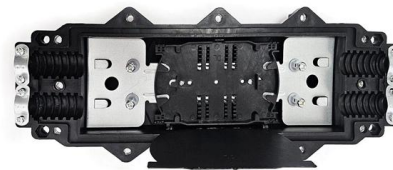
For the concealed distribution box in the wall, the wooden box larger than the distribution box shall be used to reserve holes. When installing the distribution box, the wooden box must be

[Contact Us](#)

### Installation requirements for distribution boxes

Distribution boxes shall be made of non-combustible materials; open distribution boards may be installed in production places and offices with low electric shock risk; enclosed cabinets shall

[Contact Us](#)



### Proper Heights for Electrical Wall Switches

Many aspects of electrical wiring installation have very specific guidelines set forth by the National Electrical Code (NEC) and local building

[Contact Us](#)

### Main panel minimum height from floor?

What's the minimum height requirement for a main distribution panel. I don't believe there is one in the code but you can narrate safety concerns, Steve.

[Contact Us](#)



### **IEC / BS 7671 Codes for Consumer Unit and Distribution**

Residential: The recommended height for distribution board and consumer unit is between 1 metre to 1.8 metre from the floor. The suggested height is 1.3 metres

[Contact Us](#)



### **Requirements And Specifications For Installation Of**

In flammable and explosive environments, explosion-proof distribution boxes should be selected and explosion-proof treatment should be carried out.

[Contact Us](#)



### **"How High to Mount an Electrical Panel: Guidelines and Safety Protocols"**

This article provides an exhaustive examination of the principles and standards governing the height at which electrical

[Contact Us](#)

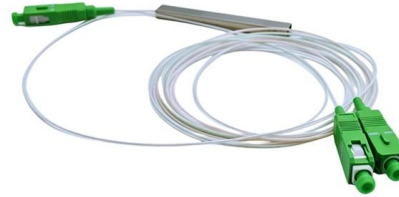




## How to Set Standard Outlet and Light Switch Heights

Setting electrical outlets and wall switches for standard, uniform heights is important both for ease of installation and for user convenience. Height

[Contact Us](#)



## Wall-Mounted vs. Floor-Mounted Distribution Boxes:

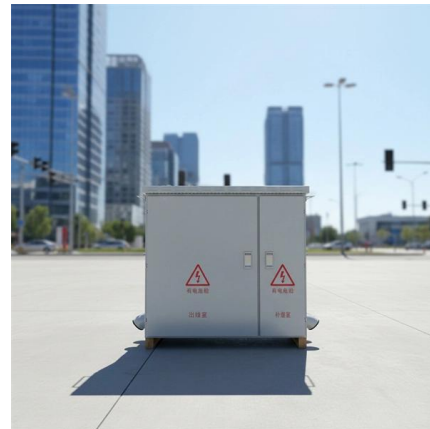
Compare wall-mounted vs. floor-mounted distribution boxes. Learn their key differences, uses, pros & cons to choose the right one for your space

[Contact Us](#)

## Installation process of distribution box

The wall mounted distribution box can be fixed on the wall with expansion bolts, but the dovetail bolts shall be embedded in the hollow brick or block wall or fixed with

[Contact Us](#)



**Strengthen door locks**  
More durable and aesthetically pleasing



**Grounding screw**  
More aesthetically pleasing and safer



**Removable hinges**  
Make operation more convenient



**Sealing strip**  
Dustproof and waterproof

## The installation requirements for the distribution box

PDF file

## I.S.10101 Bitesize Guide

Section 530.6.2.3 states that a wall-mounted distribution board shall be mounted at a height not greater than 2.15m measured from the floor to the top surface of the highest protective device.



## "How High to Mount an Electrical Panel: Guidelines and Safety Protocols"

Explore comprehensive insights on the appropriate height for mounting electrical panels, abiding by the NEC standards for

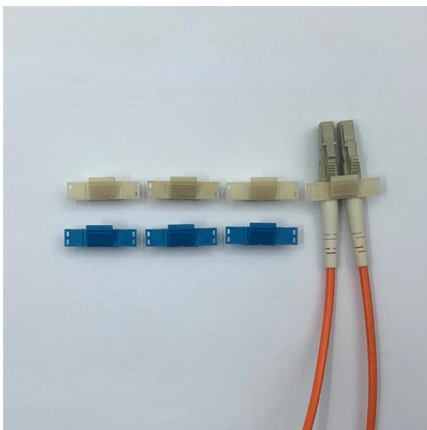
[Contact Us](#)



## What is the code minimum height for an electrical panel?

o What is the maximum gap allowed between the front of a recessed electric panel box and the wall surface surrounding it? o What are the requirements for NM-cables entering an electric

[Contact Us](#)



## [Contact Us](#)

### Product Photography



## What is the Ideal Installation Height for a Distribution Box

The proper installation of a distribution box involves placing it at the right height to ensure safety and convenience. Mounting it 4.5 to 5.5 feet (1.4 to 1.7 meters) high

[Contact Us](#)



## Installation points of household distribution box

The distribution box of household distribution box should not be installed too high. Generally, the installation elevation is 1.8m to facilitate operation; the electric pipe

[Contact Us](#)



## Electrical Panel Location and Installation: Clearance,

Conclusion Understanding the best electrical breaker box location in your house is extremely important because the circuit breaker box controls the

[Contact Us](#)



## Electrical Panel Location and Installation: Clearance,

The National Electrical Code requirements state in code NEC 240.81 that you can install the electric panel box vertically or horizontally provided the

[Contact Us](#)

## Electrical Panel Mounting Requirements (Dictated by the

Particularly, the electrical rule book states that a panel must be installed no less than four feet off the floor. In the same vein, the height of the

[Contact Us](#)



## Key Points Of Installation And Collocation Of Distribution Box In

Distribution box and switch box shall be made of iron plate or high-quality insulating material, and the thickness of iron plate shall be greater than 1.5mm The electrical equipment in the distribution box

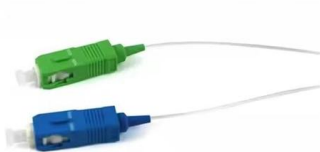
[Contact Us](#)

## What is the installation height of distribution box?



Household distribution boxes can be installed on the ground or on the wall. Ground-mounted foundations should be 50 to 100 mm above ground level. When flused installed in the wall,

[Contact Us](#)



### Distribution boards components

Service cable ducts or conduits, surface mounted or in cable chases embedded in the wall Note: to facilitate future modifications to the installation, it is recommended to keep all relevant

[Contact Us](#)

### electrical

How far off the floor should my circuit breaker box be? I'm changing from a 100 to a 200 amp. The lead in wires are underground and come into the bottom of box making them too short to

[Contact Us](#)



### How High Should You Mount an Electrical Panel?

Determine the precise, code-compliant height for mounting your electrical panel, including crucial working space and location restrictions.

[Contact Us](#)



## Electrical Panel Mounting Height Requirements: General

The requirement was changed to permit other equipment associated with the electrical installation to be installed above or below the electrical equipment as

[Contact Us](#)



## Electric Meter Box Height , MJBOX Installation Guide

Ensuring the correct height for electric meter boxes is essential for safety and compliance with the National Electric Safety Code. Residential installations

[Contact Us](#)

## Embedded Installation Of Distribution Box

According to the installation size of wall mounted (surface mounted) terminal combination electrical appliances, first drill bolt holes or embedded wood bricks, then open the upper cover of the

[Contact Us](#)

02

High Quality Material



High hardness to resist external impact, Good Shaping Performance, Good Look and Anti-rust



## Wiley Online Library , Scientific research articles, journals, books

Hier sollte eine Beschreibung angezeigt werden, diese Seite lässt dies jedoch nicht zu.

[Contact Us](#)



## 2013 48 Autumn Wiring Matters

An extension, or an alteration to an existing dwelling, means new or replacement switches, and outlets and controls can be installed (for aesthetic reasons) to match existing mounting heights. however,

[Contact Us](#)



## Contact Us

---

For datasheets, pricing, or custom fiber access solutions, please visit:  
<https://frindel.es>