

# **How high is the high-voltage distribution box above the ground**





## Overview

---

Distribution connect to the transmission system and lower the transmission voltage to medium voltage ranging between 2 and 33 kV with the use of. Rural distribution is mostly above ground with utility poles, and suburban distribution is a mix. High-voltage circuits supplying power to portable or mobile equipment shall be protected by suitable circuit breakers of adequate interrupting capacity which are properly tested and maintained and equipped with devices to provide protection against under voltage, grounded phase, short circuit and. Maintaining the correct vertical separation, known as clearance, is an absolute necessity. In April 2021, there were approximately 385,000 miles of high-voltage transmission lines (100 kilovolts or.



## How high is the high-voltage distribution box above the ground

---



### BfS

High-voltage lines can be installed above ground as overhead lines or as underground cables. In doing so, they generate electric and magnetic fields that

[Contact Us](#)

### "How High to Mount an Electrical Panel: Guidelines and Safety Protocols"

Explore comprehensive insights on the appropriate height for mounting electrical panels, abiding by the NEC standards for

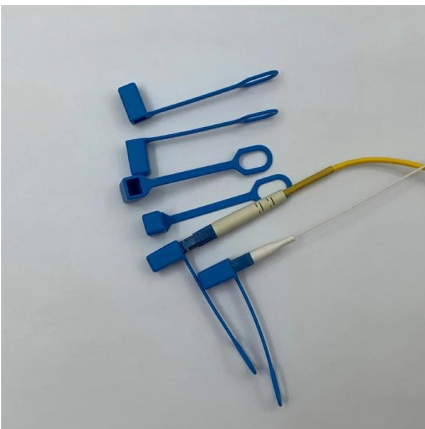
[Contact Us](#)



### High Voltage Works

National Grid owns and maintains the high voltage (HV) electricity transmission network in England and Wales (Scotland has its own networks). It's responsible

[Contact Us](#)



### ACCESS AND WORK ON HIGH VOLTAGE UNDERGROUND CABLES

1.2 High Voltage underground cables are those cables operating at a voltage above 1000V AC or 1500V DC within SSEN-D.

[Contact Us](#)



### Typical Constructions Of Overhead Lines

Along streets, alleys, through woods, and in backyards, many of the distribution lines that feed customers are overhead structures. Because overhead

[Contact Us](#)



### Minimum Clearances from High-Voltage Lines

To stay safe, follow the minimum horizontal clearances from high-voltage power lines when locating buildings, storage areas and other installations.

[Contact Us](#)



### Detailed Comparison Between LV & HV Distribution

Discover the differences between low voltage and high voltage power distribution rooms, including voltage levels, configurations, and so on.

[Contact Us](#)

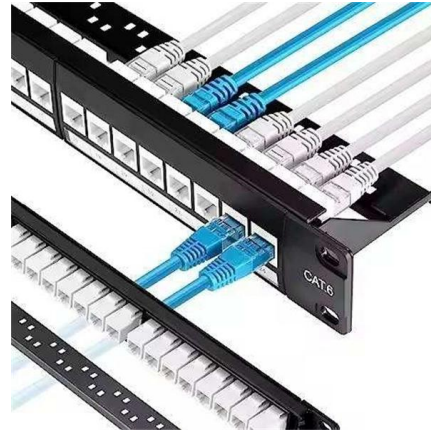




## C:VRPW-40-176 DXDX DistributionOverhead Distribution

C:VRPW-40-176 DXDX DistributionOverhead Distribution StandardsStandard-Interim CAD-DrawingsSection 06 - Voltage Line Locat MINIMUM ATTACHMENT HEIGHT = MAX. SAG (FROM

[Contact Us](#)



## Guide to Low Voltage Distribution Systems , Maddox

Learn about the different types and components of low voltage distribution systems, including 120/240 split phase, corner grounding, and 240

[Contact Us](#)

## High-Voltage Basics: The Backbone of the Power Grid

Explore high voltage basics and their role in the power grid. Learn about key components and their applications in our latest blog post. Read more here.

[Contact Us](#)



## Minimum Electrical Clearance Standards , PDF , High

It includes minimum clearances for indoor and outdoor phases, ground

[Contact Us](#)



## Requirements And Specifications For Installation Of

The bottom edge of the distribution box is usually between 1.5 meters and 1.8 meters above the ground, which is convenient for operation and

[Contact Us](#)



## What is the Ideal Installation Height for a Distribution Box

Install a distribution box at 4.5 to 5.5 feet high for safety, accessibility, and compliance. This height ensures easy use and protection from hazards.

[Contact Us](#)

### inside

12) (i) Substations with oil-filled equipment/apparatus (Transformers and high voltage panels) shall either be located in open or in a utility building. They shall not be located in any floor other than the ground



[Contact Us](#)



## 30 CFR 77.807-1 -

§ 77.807-1 High-voltage powerlines; clearances above ground. High-voltage powerlines located above driveways, haulageways, and railroad tracks shall be installed to provide the minimum vertical

[Contact Us](#)



## How High Are Electric Lines Supposed to Be?

These requirements are not static values but are determined by a calculation that considers the line's voltage and the specific type of ground or object located beneath it.

[Contact Us](#)



## What is the installation height of distribution box?

The outdoor distribution box should be firmly installed on the bracket or foundation. The height of the bottom of the box should not be less than 1.0m from the ground, and measures should

[Contact Us](#)



## High voltage

High voltages may lead to electrical breakdown, resulting in an electrical discharge as illustrated by the plasma filaments streaming from a Tesla coil. High voltage is

[Contact Us](#)



## Overhead vs. Underground , Transmission , Corporate

In April 2021, there were approximately 385,000 miles of high-voltage transmission lines (100 kilovolts or greater) in the United States. Just 0.5% or an estimated

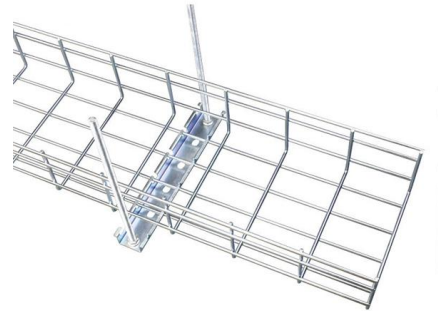
[Contact Us](#)



## Electric power distribution

Overview  
History  
Generation and transmission  
Primary distribution  
Secondary distribution  
Modern distribution systems  
See also  
External links

Electric power distribution is the final stage in the delivery of electricity. Electricity is carried from the transmission system to individual consumers. Distribution substations connect to the transmission system and lower the transmission voltage to medium voltage ranging between 2 kV and 33 kV with the use of transformers. Primary distribution lines carry this medium voltage power to distribution transformers located



### [Contact Us](#)



## HV Transmission Line Components (Towers, Conductors, Substations)

In this article, we list main transmission line components and their characteristics: Towers  
Conductors  
Substations  
ROWS (rights-of-way)  
Access Roads  
1. Towers  
Transmission towers are the

### [Contact Us](#)

## Flexi answers

Power lines can vary greatly in height, depending on their use and location. Residential distribution lines are typically 30-60 feet (9-18 meters) high. However, high-voltage transmission lines, which carry

### [Contact Us](#)



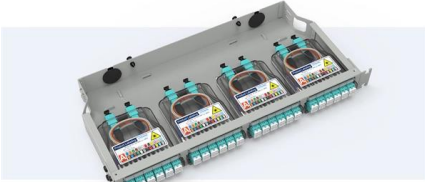
## Modern practice for LV/MV substation and power

Modern Practice for Buildings  
In the present era, the presence of reliable and uninterrupted electricity is commonly assumed in the majority of



### Pre-Terminated Patch Panel

- Multi-application support
- Flexible configuration
- Modular design



Cable Gland Plug  
28mm Cable Gland Plug



MPO-LC up to 96 cores  
MPO direct connection 48 ports



Mounting Bracket  
Semi-open mounting holes

## What Is the Standard Height of Power Lines?

The height of power lines is determined by the lines connected to a pole and municipal codes governing line ground clearance. Communication lines include television, broadband internet

[Contact Us](#)

[Contact Us](#)



## Undergrounding high voltage electricity transmission lines

Introduction The purpose of this document is to provide information about the technical merits and challenges associated with undergrounding high voltage electricity lines, compared with installing

[Contact Us](#)

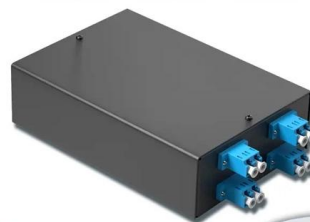
## Living and Working Around HIGH-VOLTAGE POWER LINES

How close you can come to a transmission line. Don't put yourself or any object higher than 13 feet above the ground in pedestrian areas or 15 feet above the ground in other areas when undergrounding. Don't

[Contact Us](#)

4-port 8-core LC wall-mounted fiber terminal box (empty frame)

- Surface painted
- Scientific plate fiber
- Cold-rolled steel plate



Lifetime quality assurance

Free shipping

Customizable for telecommunications



### 30 CFR Part 77 Subpart I -

High-voltage powerlines located above driveways, haulageways, and railroad tracks shall be installed to provide the minimum vertical clearance specified in National Electrical Safety Code: Provided,

[Contact Us](#)

### 068177 Overhead Transmission Line Design Criteria

Transmission line right of ways should normally be clear of encumbrances such as above ground structures or underground pipelines. The unencumbered right of way is required to allow for

[Contact Us](#)



### Primary Distribution Voltage Levels

Information above shows maximum power levels typically supplied by various distribution voltages. Less current means lower voltage drop, fewer

[Contact Us](#)

## Contact Us

---

For datasheets, pricing, or custom fiber access solutions, please visit:  
<https://frindel.es>