

Honduras RoHS-compliant air-cooled switch 25G





Honduras RoHS-compliant air-cooled switch 25G

SFP-10/25G-CSR-S= Datasheet Overview



Cisco 25G Modules provide these highlights:
Interoperable with other IEEE-compliant 25G interfaces where applicable

[Contact Us](#)

3U VPX 56 CHANNEL 25G ETHERNET SWITCH

Amphenol Aerospace has a new 3U 56 channel and 25Gbps VPX conduction and air cooled Ethernet switch. This is in addition to our tried and true 10Gbps technology in 3U and 6U configurations.



[Contact Us](#)

Cisco 25 Gigabit Modules

The Cisco ® 25GBASE SFP28 (Small Form-Factor Pluggable) portfolio offers customers a wide variety of high-density and low-power 25 Gigabit Ethernet connectivity options for data center and high

[Contact Us](#)



Arista DCS-7280SR2-48YC6-R , 7280R2 48-Port 25G SFP28 Switch,

Description The Arista DCS-7280SR2-48YC6-R is a high-performance 1RU data center switch engineered for modern cloud and enterprise environments. With 48 wire-speed 25GbE SFP28 ports



HK-SFP-1.25G-20-1310

1.25Gbps Single Mode BIDI SFP Transceiver
 HK-1.25G-20-1310 -1- Features a. Single Power Supply 3.3V b. Small Form Factor Pluggable (SFP) MSA

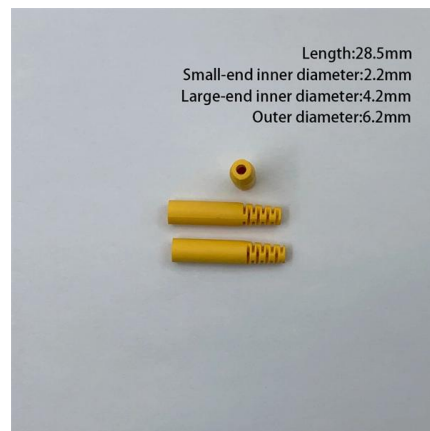
[Contact Us](#)



HPE Aruba Networking: 25G and 100G SFP28/QSFP28

Upgrade your enterprise campus network with high-speed 25G and 100G SFP28/QSFP28 switch options from Netgear and HPE Store. Enhance your

[Contact Us](#)



Sfp28-25g-sr-i-c Datasheet

Product Description This Dell® SFP28-25G-SR-I compatible SFP28 transceiver provides 10/25GBase-SR throughput up to 100m over multi-mode fiber (MMF) using a wavelength of 850nm via an LC

[Contact Us](#)





Arista 25G Transceivers and Cables

Arista supports a range of 25G copper cables and optical transceivers compliant to IEEE standards and industry MSAs. Arista's 25G connectivity solutions include copper cables, Active Optical Cables

[Contact Us](#)



Cisco 25GBASE SFP28 Modules Data Sheet

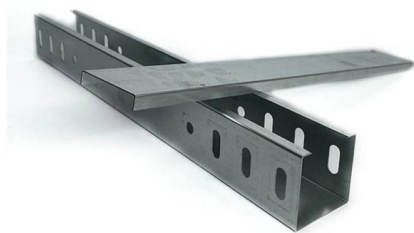
Cisco SFP-25G copper cables Cisco SFP28 to SFP28 copper direct-attach 25GBASE-CR1 cables are suitable for very short links and offer a highly cost-effective way to establish a 25-Gigabit link

[Contact Us](#)

3U VPX 25G 56-Channel Rugged Ethernet Switch

3U VPX 56 Channel 25G Ethernet Switch
Amphenol Aerospace has a new 3U 56 channel and 25Gbps VPX conduction and air-cooled Ethernet switch. The 56

[Contact Us](#)



Optical Transceivers Accelink , Lighting Your Dreams

RTXM300-1xx 25G PON OLT SFP28 transceiver modules are designed for use in 25G PON ONU links on up to 20km of single mode fiber. They are compliant with the IEEE 802.3ca, SFF-8402. The optical

[Contact Us](#)



Cisco 25GBASE SFP28 Modules Data Sheet

The Cisco 25GBASE SFP28 (Small Form-Factor Pluggable) portfolio offers customers a wide variety of high-density and low-power 25 Gigabit

[Contact Us](#)



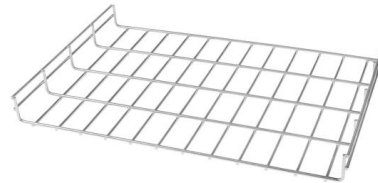
AML25GBF8AA01GR HONEYWELL, UNSEALED OI-PB SWITCH : ROHS COMPLIANT

Buy AML25GBF8AA01GR - HONEYWELL - UNSEALED OI-PB SWITCH : ROHS COMPLIANT: YES. Newark Electronics offers fast quotes, same day dispatch, fast delivery, wide inventory, datasheets &

[Contact Us](#)

AML25GBF2AA03GR HONEYWELL, UNSEALED OI-PB SWITCH : ROHS COMPLIANT

Buy AML25GBF2AA03GR - HONEYWELL - UNSEALED OI-PB SWITCH : ROHS COMPLIANT: YES. Newark Electronics offers fast quotes, same day dispatch, fast delivery, wide inventory, datasheets &



[Contact Us](#)



3U VPX 25G 56-Channel Rugged Ethernet Switch

The 3U 56 Channel and 25Gbps VPX conduction and air-cooled Ethernet switch is an addition to our 10G technology in 3U and 6U configurations. The switch is

[Contact Us](#)



HK-SFP-1.25G-20-1550

Small form factor pluggable (SFP) MSA compatible Single fiber bi-directional LC connector Hot pluggable capability Compliant with ROHS standard Cost effective

[Contact Us](#)



25GBASE-ER SFP28 1310nm 30km Industrial Transceiver Datasheet

Features Compliant to SFP28 MSA Fully RoHS Compliant All Metal Housing for Superior EMI Performance Operating Data 25.78125Gbps±100 ppm

[Contact Us](#)

H3C S6825 Series Data Center Switches- H3C

The switch is an ideal product for high-density 25GE switching and aggregation at data centers and cloud computing networks. It can also operate as a TOR access switch on an overlay or integrated

[Contact Us](#)



25G SFP28 Transceivers

They are compliant with SFP28 MSA, SFF-8431 and SFF-8472, it is mainly used in 25G data center internal network, wireless, metropolitan area network and other environments. The transceiver is

[Contact Us](#)





25G_XCVR_LR_FIN

Explore the 25G_XCVR_LR_FIN SFP28 transceivers, supporting data rates up to 25.78 Gb/s for links up to 10 km. Compliant with industry standards and RoHS

[Contact Us](#)



AML25GBF2CA01GR HONEYWELL, UNSEALED OI-PB SWITCH : ROHS COMPLIANT

Buy AML25GBF2CA01GR - HONEYWELL - UNSEALED OI-PB SWITCH : ROHS COMPLIANT: YES. Newark Electronics offers fast quotes, same day dispatch, fast delivery, wide inventory, datasheets &

[Contact Us](#)



RoHS Compliant Switches , Salecom Environmental

Salecom's RoHS certified switches guarantee compliance with strict international environmental standards, with documented limits for lead, cadmium, mercury,

[Contact Us](#)



Select the Right 25G Switch for Your Campus and Data

Performance: The performance of a 25G data center switch hinges on its chipset and CPU, which are critical for processing data, managing high-speed

[Contact Us](#)





Generic 25GBASE-SR SFP28 Transceiver Module

Each SFP28 transceiver module is individually tested on targeted switches, and is fully compliant with the SFP28 MSA, RoHS, CPRI, and the eCPRI standards. Featuring low power consumption, high

[Contact Us](#)



Contact Us

For datasheets, pricing, or custom fiber access solutions, please visit:
<https://frindel.es>