

Hollow polymer cable trays require no accessories



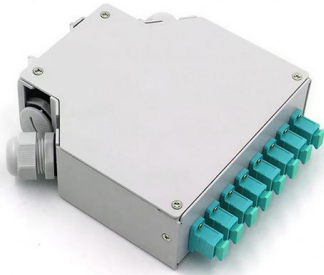


Overview

Due to their exposure to the open air because of the cable trays, the wires contained within need a very durable outer covering. The regulations dictate that the cables must either be Type TC (also known as Tray Rated) or must be metal-armored (Type MC). Cable tray may be used as the Equipment Grounding Conductor (EGC) in any installation where qualified persons will service the installed cable tray system. Cable tray systems provide a safe, organized, and flexible method for supporting insulated conductors and cables in commercial and industrial electrical installations. When completely installed, without damage either to conductors or structural system use maintain spacing or to keep cables in place when the tray is bent the minimum bend radius for cables as they exit the bottom of the cable tray.



Hollow polymer cable trays require no accessories



Cable Tray Fill Rules (NEC 392)

This guide covers the cable tray types and their appropriate applications, the fill rules for each configuration, ampacity derating requirements,

[Contact Us](#)

Cable Trays & Cable Ladders catalogue.cdr

Cable Trays come with carefully designed perforations, for ventilation, cable holding and for easy installation. Support system is suitable for both Cable Trays & Ladders and comes in two fixing

[Contact Us](#)



Cable Tray Questions , Cable Tray Institute

See CTI Technical Bulletin No. 15. Question 8: Are there any requirements for separation and segregation of various types of cables (i.e. Power, instrumentation, signal, telecommunications, etc.)

[Contact Us](#)

Cable Trays and Accesories

SFSP cable trays and accessories from SFSP are manufactured from steel sheets in accordance with BS EN 10130/BS EN 10131/ BS EN 10051, complying with BS

[Contact Us](#)



METHOD STATEMENT FOR Cable tray and trunking system installation

Cable tray and trunking system relevant to this particular section of works will be checked and verified that these are correct type.

[Contact Us](#)

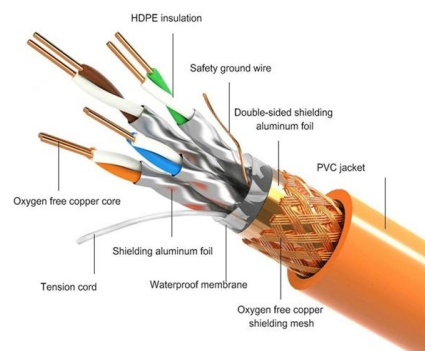


GUIDE CABLE TRAYS TECHNICAL

In accordance with its continuous improvement policy, Legrand reserves the right to change the specifications and illustrations without notice. All illustrations, descriptions and technical information

[Contact Us](#)

PRODUCT DETAILS



Cable Tray Fill Rules (NEC 392)

Cable Tray Fill and Installation per NEC 392 Cable tray types, fill rules for single-conductor and multiconductor cables, ampacity derating, separation

[Contact Us](#)



Practices for grounding and bonding of cable trays

Grounding and bonding of cable trays There are three wiring options for providing an EGC in a cable tray wiring system: An EGC conductor in or on

[Contact Us](#)



Method Statement installation of Cable Trays and Ladders

This method statement covers the site installation of the cable tray & ladders and the requirements of checks to be carried out.

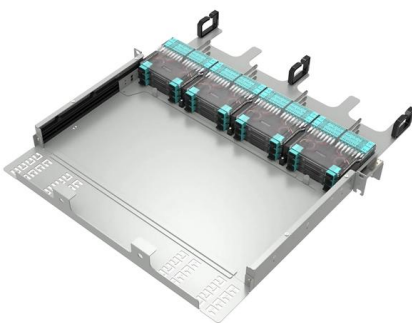
[Contact Us](#)

Cable Tray Systems: Requirements and Best Practices

This article explains the main requirements and good practices for cable tray systems, including tray types, materials, loading, supports, bonding, cable selection, and installation details.



[Contact Us](#)



Practices for grounding and bonding of cable trays

Cable tray may be used as the Equipment Grounding Conductor (EGC) in any installation where qualified persons will service the installed cable tray system. There is no restriction as to where the

[Contact Us](#)



GUIDE CABLE TRAYS TECHNICAL

When fitting cable trays and their accessories, the products are cut on site to create changes of direction, adjust sections, etc. Damage can also occur during handling; as a result, both the

[Contact Us](#)

Length:14.5mm
Small-end inner diameter:2.0mm
Large-end inner diameter:3.5mm
Outer diameter:5.2mm



Polymer Cable Trays Types: Your Guide to Choosing Right

Explore different Polymer Cable Trays Types. We break down solid, hollow, and steel-lined options for your cable management needs. Find the best fit.

[Contact Us](#)

CABLE TRAY

Figure 4.50 Attachment of a channel cable tray in this method maintains the electrical requirements, bolted mechanical connection, and provides a practical method of dropping tray cables to equipment.



[Contact Us](#)



FactSheet

FactSheet Electrical Safety Hazards of Overloading Cable Trays According to the 2005 National Electrical Code® (NEC), a cable tray system is " unit or assembly of units or sections and

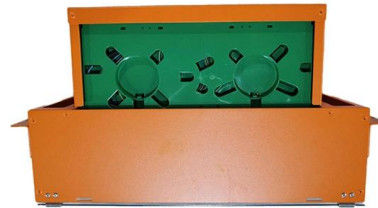
[Contact Us](#)



Cable Tray Selector

MP Husky's cable tray selector for choosing the correct tray type (ladder, solid bottom, perforated, wire mesh) and size based on load, cable type and

[Contact Us](#)



Cable trays are structural components of a facility's electrical system

All cables and conductors approved for use in cable trays are required to be insulated. However, while the insulation of the conductors does provide some protection, it is important to use measures to

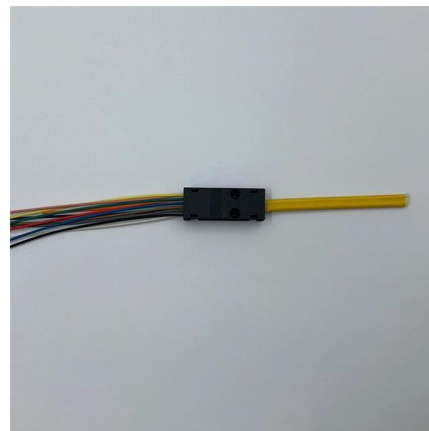
[Contact Us](#)



Cable Trays , McMaster-Carr

Choose from our selection of cable trays, including over 850 products in a wide range of styles and sizes. Same and Next Day Delivery.

[Contact Us](#)



Cable Tray Installation Rules (NEC 392) - Electrical Trader

Despite their versatility, cable trays are not suitable for every situation. They are strictly prohibited in hoistways or any location where they could face severe physical damage. Cable trays

[Contact Us](#)



Do You Really Need a Cable Tray? Here's How to Decide

Blog Do You Really Need a Cable Tray? Here's How to Decide Cable trays are a popular option for managing cables in various types of buildings and

[Contact Us](#)



B-Line series Cable Tray Design Considerations

Cable tray must be capable of supporting not just the weight of the cable, but also the weight of any equipment or materials attached to the cable tray. Additionally, dynamic environmental elements

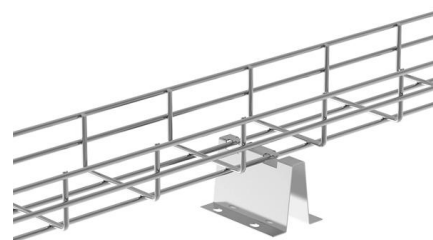
[Contact Us](#)



Cable Tray Technical Guide A practical guide to product selection and

Cable Tray Technical Guide A practical guide to product selection and installation This guide for engineers and installers has been developed by ABB as a practical reference regarding cable tray

[Contact Us](#)



FRP CABLE TRAY SYSTEM

FRP/GRP Material Fibre Reinforced Plastic/ Glass Fibre Reinforced plastic is a composite material made of a polymer matrix reinforced with fibres. The fibres are usually fibreglass, carbon, or aramid,

[Contact Us](#)





B-Line series Cable Tray Design Considerations

As an industry leader in cable tray, Eaton offers one of the widest ranges of cable management solutions available in the market today with its B-Line series portfolio. With unmatched quality and service, we

[Contact Us](#)



Important design considerations for cable ladder and

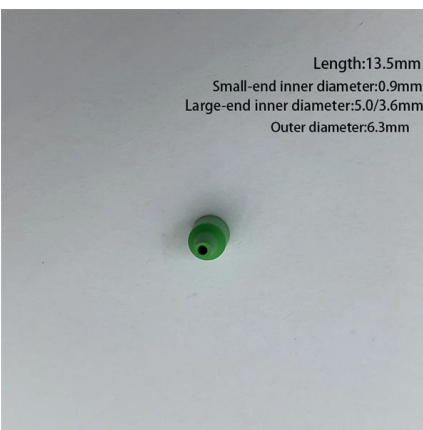
The example demonstrates the use of purpose-built accessories to connect the cable tray into the desired configuration. Note the reference to hand

[Contact Us](#)

What are Cable Trays? Everything you need to know

Discover everything about cable trays in industrial settings: types, benefits, installation tips, and compliance with NEC and fire resistance standards.

[Contact Us](#)



Cable Tray Technical Guide A practical guide to product selection and

Cable tray installed in a hazardous location must contain only those cables that are appropriate for this type of environment as defined in Chapter 5 of the NEC.

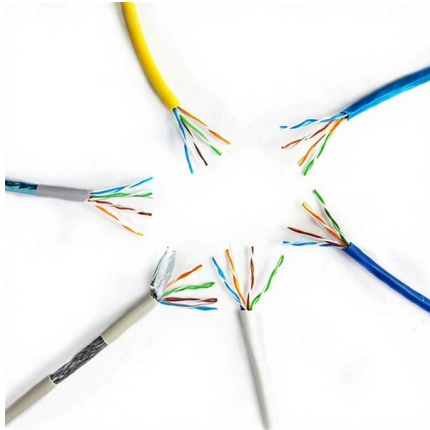
[Contact Us](#)



NEC Article 392 Guide: Ensuring Compliance for Cable

The short answer is no. Due to their exposure to the open air because of the cable trays, the wires contained within need a very durable outer

[Contact Us](#)



Method Statement for the Installation of Cable Tray, Trunking, and

Ensure cable tray, trunking or ladder are installed neatly on the surface and be truly vertical, horizontal or parallel with the features of the building. Wherever the accessories like Tees, Flat Elbows,

[Contact Us](#)

Contact Us

For datasheets, pricing, or custom fiber access solutions, please visit:
<https://frindel.es>