

Hollow-out pipe bridge





Hollow-out pipe bridge



Swinstie Pipe Bridge Replacement (2018)

The existing Swinstie Pipe Bridge is located near Cleland, North Lanarkshire, and the structure supports a 450mm diameter iron gravity sewer

[Contact Us](#)

Feasibility Study of a New Attached Multi-loop CO2 Heat Pipe for Bridge

Compared with previous studies, the new CO2 heat pipe is feasible and efficient as a heating system attached to existing bridge decks for de-icing.

[Contact Us](#)



THE PARAMETRIC DESIGN OF A STEEL PIPE BRIDGE

The thesis aims to create a parametric model for the steel pipe bridge to be applied in the early stages of the project, thereby facilitating the design process. The thesis consists of descriptions of pipeline

[Contact Us](#)

THE PARAMETRIC DESIGN OF A STEEL PIPE BRIDGE

Therefore, this thesis will consider the ways of integrating parametric design at the early stages of designing a pipe bridge. The thesis aims to create a parametric model of the steel pipe bridge for use



Bridge Crossing Piping System Design Using Welded Steel Pipe or

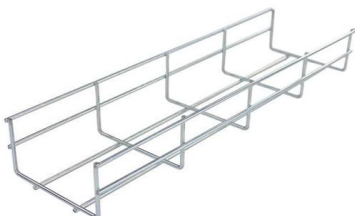
This paper will present an overview of methodologies for pipeline system design of bridge crossings using either ductile iron pipe or welded steel pipe (the two most commonly used piping

[Contact Us](#)

DISCLAIMER

The steel .pipe-pile splice can be used for splicing hollow core prestressed concrete piles. Figure 1 shows the details of the splice. (splice number 2 is recommended).

[Contact Us](#)



The Curse of Bridge Hollow (2022)

The Curse of Bridge Hollow: Directed by Jeff Wadlow. With Marlon Wayans, Priah Ferguson, Kelly Rowland, John Michael Higgins. A teenage girl, who accidentally releases an ancient and

[Contact Us](#)



Best Practices for Bridges with Pipe Piles

Pipe piles are used extensively for bridge substructures in Tennessee. This research serves to develop a systematic approach to the selection and the design of pipe pile -supported substructures, both

[Contact Us](#)



LONG SPAN & BRIDGE CROSSING PIPE

Long Span Pipe & Bridge Crossing Submittal Document (Rev. 01/2024) Materials and specifications are subject to change without notice. Images may be rendered examples and are not necessarily

[Contact Us](#)



Pipe Bridge Design Standards and Criteria

This document outlines the design philosophy for pipe bridge structures. It covers applicable codes and standards, materials of construction, design loads, and

[Contact Us](#)



Scotwood Overflow & Pipe Bridge

Construction/ install of new pipe bridge including contract lifting and installation of fully constructed bridge under partial road closure. Installation of approx. 2km of

[Contact Us](#)





Steel Bridges: Substructure Design

Pipe piles are sometimes selected over H-piles due to the greater structural capacity of the closed pipe section (e.g., greater bending stiffness, greater buckling capacity, greater moment capacity, etc.).

[Contact Us](#)



APPENDIX G BRIDGE SEDIMENT REMOVAL GUIDELINES FOR AHTANUM & WIDE HOLLOW

In order to evaluate the flood management options for bridges on the Ahtanum and Wide Hollow Creeks, the Yakima Countywide Flood Control Zone District performed hydraulic analyses on the common

[Contact Us](#)

Steel Bridges: Substructure Design

Consider existing roadways, bridges, substructures, foundations, above- and below-ground utilities, buildings, culverts and other drainage structures, and any other possible existing structures. Also,

[Contact Us](#)



Bridge Crossings and the Proper use of EX-TEND, FLEX-TEND

Bridge Crossings and the Proper use of EX-TEND®, FLEX-TEND®, and Force Balanced FLEX-TEND Products Bridges can serve as very convenient structures for routing utility piping over obstacles

[Contact Us](#)

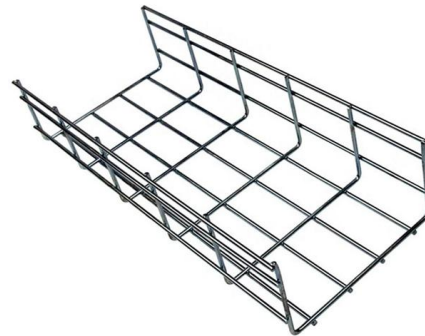




Pipeline bridge

Pipeline bridges for liquids and gases are, as a rule, only built when it is not possible to run the pipeline on a conventional bridge or under the river. [non-primary source needed] However, as it is more

[Contact Us](#)



Innovative Dual-Function Heated Pavement System Using Hollow Steel Pipe

Instead of embedding separate heat exchange pipes, the conventional steel reinforcement was replaced with hollow steel bars that serve a dual function as structural

[Contact Us](#)

Rohrleitungsbrücke - Wikipedia

Rohrleitungsbrücken für Flüssigkeiten und Gase werden in der Regel nur dann gebaut, wenn es nicht möglich ist, die Rohrleitung in eine vorhandene Straßen-,

[Contact Us](#)



What Is a Steel Pipe Pile and How Is It Installed?

A steel pipe pile is a hollow, cylindrical steel tube used in deep foundation systems to support large structures. Their purpose is to transfer a building's weight from weaker surface soil to

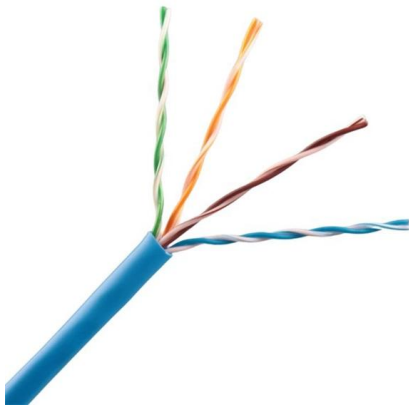
[Contact Us](#)



Pipe bridge design optimisation through a comparative study of truss

This study aims to identify the ideal configuration of a pipe bridge through the comparative study of girders with drop hanger and truss arrangements for three different spans.

[Contact Us](#)



What Is a Steel Pipe Pile and How Is It Installed?

The installation of steel pipe piles is determined by soil conditions, environmental regulations, and proximity to other structures. The three primary methods are impact driving,

[Contact Us](#)

BRIDGE CROSSINGS WITH DUCTILE IRON PIPE

Joints Ductile Iron pipe is furnished with several different types of joints: push-on, mechanical, restrained, ball and socket, flanged, and grooved and shouldered joints. Typically, bridge crossings

[Contact Us](#)



Chapter 23

Pipe piles, when driven open ended, provide similar advantages to H-piles. Pipe piles also offer improved control during installation, can be cleaned out and driven further and provide high bending

[Contact Us](#)



HSS HOLLOW STRUCTURAL SECTIONS

Welding set-up is easier. There's very little preparation necessary, and the square and miter cuts that are usually used in bridge structures are easily made. six faces, HSS has just four. This means

[Contact Us](#)



Quick Guide for Pipeline River Crossing Projects

Crossing methods such as HDD, microtunneling, direct pipe, guided auger boring, open cut, trenchless, trenched, semi-trenched, aerial, bridged

[Contact Us](#)

Microsoft Word

10. Bridge Crossings. Conceptual Design. The design of a pipeline crossing on a bridge structure is considered a special design in every case due to the varied nature of bridge designs. The preferred

[Contact Us](#)



Contact Us

For datasheets, pricing, or custom fiber access solutions, please visit:
<https://frindel.es>