

High-voltage and low-voltage cables should be routed in the same cable tray





Overview

Why It Matters: High-voltage and limited energy circuits routed too closely can cause cross-talk, distortion, or packet errors, especially in dense cable trays or congested ceiling spaces. Best Practice: Use separate trays, conduits, or divider systems to isolate voltage classes. There are really two considerations insulation failure /damage- what sort of cable is the UTP (would the jacket of the lower rated cable hold off mains voltages) if so then they could be as close as you like, otherwise it should be segregated by split duct or similar. What are the NEC rules for mixing different voltage cables in the same cable tray?

At times it becomes necessary, or even desirable, to route medium- or high-voltage cables (greater than 600V) in the same cable tray with cables rated 600V or less. The intent of these cabling regulations is to ensure uniformity and homogeneity of the measures implemented in the ITER facility related to the protection of equipment and people against the unwanted effects of electric currents.



High-voltage and low-voltage cables should be routed in the same c



IS 1255 (1983): Code of practice for installation and maintenance of

Guidance about voltage drop, in volts per kilometre per ampere, at the operating temperature of the cable, may be drawn from Tables 2, 3 and 4, This is also an important consideration for cables

[Contact Us](#)

Types of Cable Typically Used in Cable Tray

In all instances cables utilized within a cable tray system should be UL listed and marked as cable tray rated. The types of cables, allowed in cable trays, and the

[Contact Us](#)



Separation distance between high power cables and low power

If the higher voltage conductors are within a raceway or cable they can be routed right next to one another or even touching. If associated with same equipment even can support the low

[Contact Us](#)

Best Practices for Routing and Concealing Cables

A foundational rule involves maintaining strict separation between low-voltage cables, such as data wires, and high-voltage power lines. Power cables generate electromagnetic



Top 2 Things to Consider When Running Ethernet and

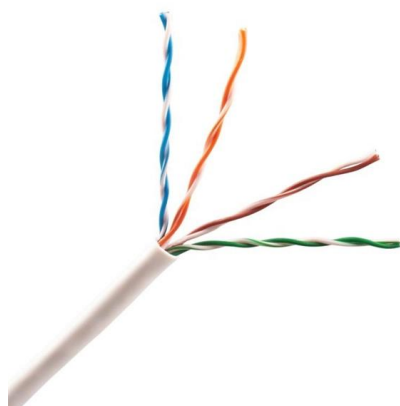
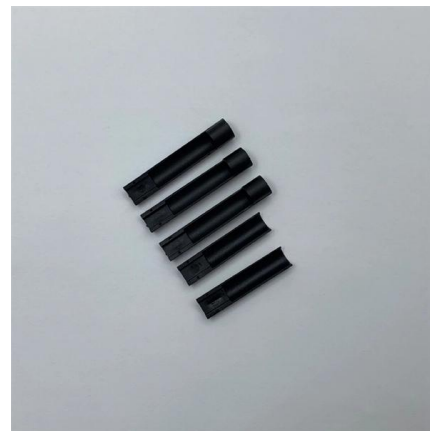
Have you ever wondered the effects of running Ethernet cable next to power cable? How do you make your install safe? And how do you avoid data loss?

[Contact Us](#)

Cable Separation Guide: Telecom & Power Cables

When installing communication cables near power service cables, proper separation must be maintained. Safety and signal integrity can be maintained by following

[Contact Us](#)



Technical Guidelines for Cable Tray Installation and

Segregation of Power and Signal Cables: Power (high-voltage) and signal (low-voltage) cables should be routed separately, using dedicated trays to minimize

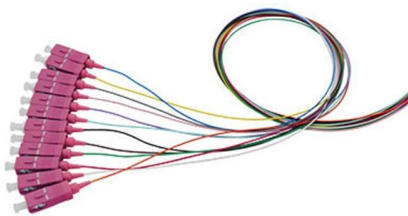
[Contact Us](#)



Good practice rules for electromagnetic compatibility

Where it is correctly inter-connected and connected to the installation's general equipotential link, metal cable tray contributes to the

[Contact Us](#)



Annex I

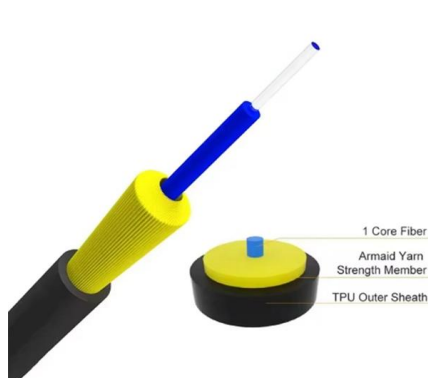
By convention, to avoid any misunderstanding and to simplify the cable tray design and installation, the bending radius for all cable trays and conduits should be at least 300 mm for Low Voltage, Sensitive

[Contact Us](#)

Cable routing , Tips for proper cabling , Simply explained

Cable trays: Cable rails are flat structures that can hold several cables at the same time. They are often used in switch cabinets and industrial systems. Cable

[Contact Us](#)



24 V DC Control Circuit Voltage Drop: PLC Inputs, Sensors, Relays,

A 24 V DC control circuit is a low-voltage power path that feeds devices such as PLC inputs, photoelectric sensors, relay coils, indicator lamps, and solenoid valves. The voltage is low

[Contact Us](#)



Cable Separation Standards , Winnie Industries

Why It Matters: High-voltage and limited energy circuits routed too closely can cause cross-talk, distortion, or packet errors, especially in dense

[Contact Us](#)



NEC 2026 Articles 721-723: Class 2/3 Circuits Guide

NEC 2026 splits Class 2 and Class 3 circuit requirements across multiple new articles: Article 721 covers power sources, Article 722 covers cables (45+ pages)

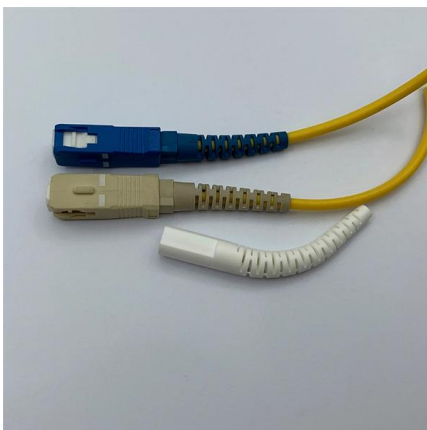
[Contact Us](#)



ITER Cabling Handbook

All components are solidly bonded together in order to achieve a maximum reduction of perturbation effects. Also, all the cables shall be pulled in cable trays or any other type of mechanical and

[Contact Us](#)



NVIDIA HGX Platform: Data Center Physical

Learn the strict physical requirements for deploying NVIDIA HGX platforms from Hopper to Blackwell. Covers power (10-140 kW/rack), liquid cooling, rack design,

[Contact Us](#)



AshwinD24's gists · GitHub

GitHub Gist: star and fork AshwinD24's gists by creating an account on GitHub.

[Contact Us](#)



Diablo 400 Project: Rack and Power

Transferring power at a higher voltage is more efficient, reduces I²R losses. This disaggregated power rack can be used with multiple generations and SKUs of IT racks; a

[Contact Us](#)



The importance of separating Band I and II cables , Gripple

Separation of Band I low voltage cables and Band II high voltage cables is mandatory to stop electrical interference. This is to remove problems

[Contact Us](#)



TRATOSFLAT® & TRATOSFLAT-FO®: Medium Voltage Flat Cable

Discover how TRATOSFLAT® & TRATOSFLAT-FO® Medium Voltage Flat Cable solves critical space challenges in South Africa's new generation of automated ports. This comprehensive guide covers

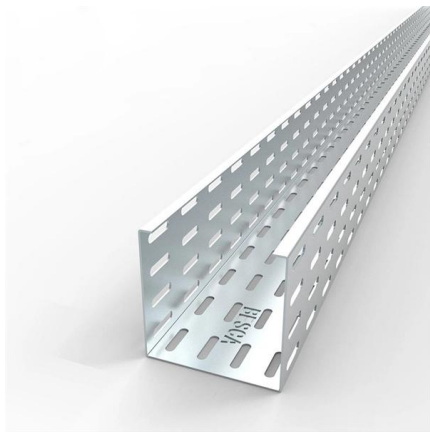
[Contact Us](#)



Minimum separation distance between LV power (230V)

For copper data cabling indoors, the minimum separation for safety is 50 mm, but in some circumstances, 150 mm is required (see Clause 5.4.4.2 of BS

[Contact Us](#)



Selecting Cables and Conductors for Power Distribution

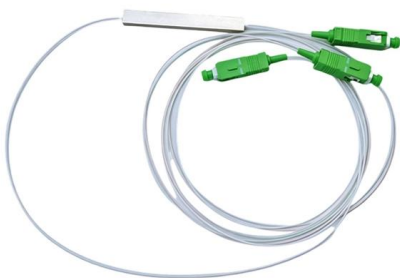
Power distribution cables are typically broken down into three classes: low voltage, medium voltage, and high voltage, which can directly affect your cable selection.

[Contact Us](#)

Mixing Cables Over and Under 600V in Cable Tray

At times it becomes necessary, or even desirable, to route medium- or high-voltage cables (greater than 600V) in the same cable tray with cables rated

[Contact Us](#)



Voltage in a Dry Pair: Understanding the Concept

V Voltage in a Dry Pair: Understanding the Concept Voltage in a Dry Pair: Understanding the Concept ? **TL;DR: What Is a "Dry Pair" Voltage and Why Does It Matter?** A **dry pair** refers to a pair of

[Contact Us](#)



Contact Us

For datasheets, pricing, or custom fiber access solutions, please visit:
<https://frindel.es>