

High Voltage Danger in Mobile Fiber Distribution Boxes





High Voltage Danger in Mobile Fiber Distribution Boxes



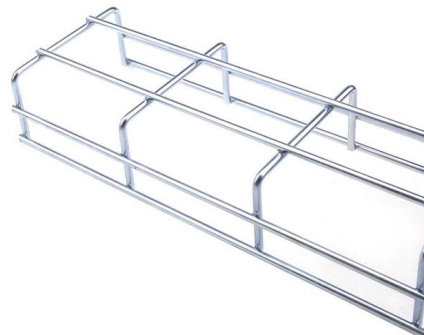
High-Low Voltage Mixed Installation Isolation Protection Tips for

In high-low voltage mixed installation scenarios (e.g., industrial control cabinets, building power distribution systems), arranging high-voltage lines ($\geq 380V$) and low-voltage lines ([Contact Us](#)

California Code of Regulations, Title 8, Section 2300. Definitions.

Interrupting Rating. The highest current at rated voltage that an overcurrent protective device is intended to interrupt under standard test conditions. Irrigation Machine. An electrically driven or controlled

[Contact Us](#)



Identifying high voltage hazards

High voltage hazards are a serious risk to workers and the public due to the massive quantities of energy that can be released. Understand the risks and how to protect yourself and others.

[Contact Us](#)

Fiber Termination Boxes: A Beginner's Guide to

In the dynamic landscape of modern communication, Fiber Termination Boxes (FTBs) play a pivotal role in ensuring the efficiency and

[Contact Us](#)



Safety Around Electrical Boxes and Infrastructure

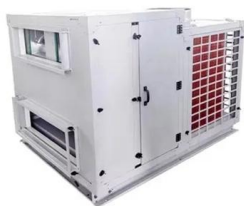
"Some of the equipment may not look dangerous, but it can contain high-voltage electricity," warns Rick Coons, CEO at Indiana Electric Cooperatives. "If someone comes into contact

[Contact Us](#)

Comprehensive Guide to Fiber Optic Safety - trueCABLE

Navigate the intricacies of fiber optic safety with an authoritative guide on handling hazards, protective gear, and best practices.

[Contact Us](#)



How dangerous are mobile phones, transmission masts, and electricity

Although mobile phones, transmission masts, and electricity pylons are often linked together, they represent separate issues, especially the last, where the characteristics of the electric and magnetic

[Contact Us](#)



What's Inside a Fiber Distribution Box? Let's Break It Down!

Applications of Fiber Distribution Boxes 1. FTTH (Fiber to the Home) FDBs are integral to FTTH deployments, where they connect the fiber optic backbone to individual residences. By housing and

[Contact Us](#)



An In-Depth Exploration of Fiber Optic Distribution

It begins with an introduction to fiber optic technology and the pivotal role of distribution boxes in managing fiber optic cables. The article categorizes the

[Contact Us](#)

Thumb Rules for Working in Switchyard and HV Areas

While operating on isolated high voltage equipment, induced voltages and currents may arise from proximate live high voltage wires, high voltage switching, or electrical malfunctions in

[Contact Us](#)



Safety of MV & HV Underground Cables & Accessories

Safety has become an important factor in the power industry due to the risks linked to catastrophic failures of electrical equipment. An internal fault,

[Contact Us](#)

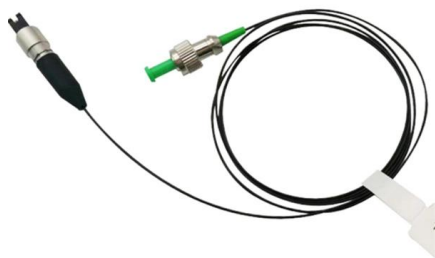
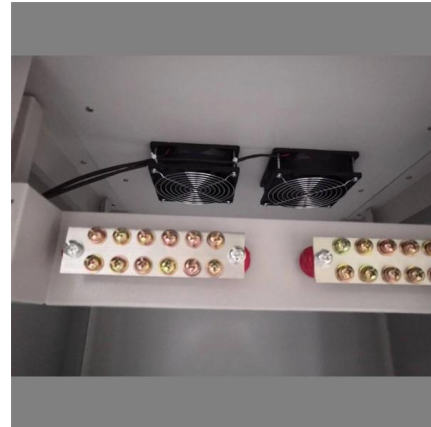




Investigation of Fiber Optic Cables Installation

Fiber-optic communication cables installed on high voltage transmission line structures are subject to high electric fields, which may cause

[Contact Us](#)



Electricity Hazards Safety Guide

Industrial voltage Some large industrial customers are supplied with electricity directly from the high voltage (HV) distribution system, and operate their own high and low voltage networks.

[Contact Us](#)

Understanding Fiber Optic Junction Boxes: A Comprehensive

In the fast-paced world of telecommunications, data transmission has become a critical aspect of our daily lives. Fiber



[Contact Us](#)



Safe Approach LIMITS to Energized Electrical Conductors for Persons

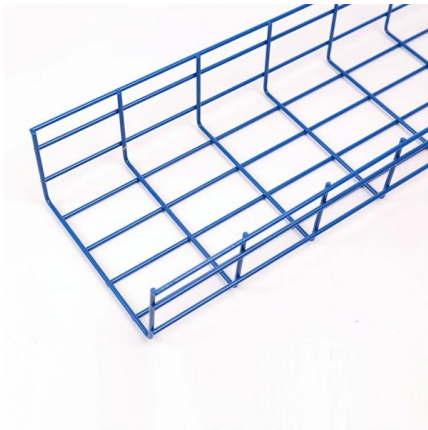
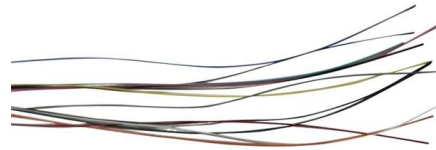
Note: Table 1 shows only common voltages and rounds them up to the nearest foot. MSHA requires mining operations to meet 30CFR56/57.12071 when it comes to approach distances to overhead

[Contact Us](#)



Hier sollte eine Beschreibung angezeigt werden, diese Seite lässt dies jedoch nicht zu.

[Contact Us](#)



Electrical Safety , Environmental Health & Safety

In completed installations, each outlet box must have a cover, faceplate or fixture canopy. Pull boxes and junction boxes for systems over 600 volts, nominal, must

[Contact Us](#)

The Technical Specifications for Fiber Distribution Boxes

By following these technical specifications, network designers and installers can ensure that the fiber distribution box will provide dependable

[Contact Us](#)



The Essential Role of the Fiber Distribution Box in

Conclusion The fiber distribution box is an indispensable component in the realm of fiber optic networking. By providing organization, protection, and ease of

[Contact Us](#)



Unlocked high-voltage electric boxes could be a hidden

LAYTONSVILLE, Md. -- There may be a hidden danger in your home that you've never considered: an electrical box carrying deadly current --

[Contact Us](#)



High Voltage!

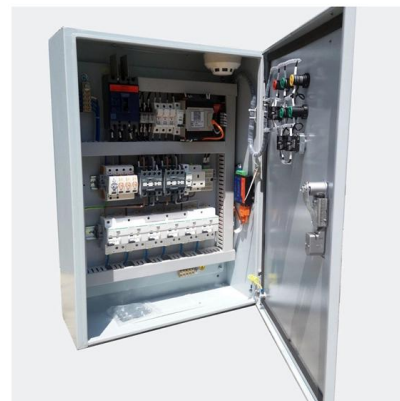
Power lines can kill and are a danger when working at height using mobile elevating work platforms (MEWPs). IPAF's High Voltage! safety campaign identifies the hazards and risks

[Contact Us](#)

The Technical Specifications for Fiber Distribution Boxes

The fiber distribution box, a crucial component in optical fiber networks, serves a dual purpose of managing and protecting optical fibers while facilitating

[Contact Us](#)



How to Use Fiber Distribution Box: A Comprehensive

A fiber distribution box (FDB) functions as a central hub in fiber optic networks where the main cable is split into multiple individual fibers for distribution

[Contact Us](#)



Top Electrical Hazards in the Fiber Optic Installation

Many fiber installations also take place in telecom facilities, data centers, or outdoor utility areas, where high-voltage systems are present.

[Contact Us](#)



Overhead power lines

PDF file

Safety Requirements for Working Near High-Voltage Power Lines

High-voltage transmission lines are necessary for delivering electricity over long distances - from generating plants to distribution substations. Overhead high-voltage transmission lines are not

[Contact Us](#)

News

Installing ADSS (All-Dielectric Self-Supporting) cables near live power lines demands precision, compliance with safety standards, and an

[Contact Us](#)



Safety Around Electrical Boxes and Infrastructure

Electrical boxes, power lines, and substations are important parts of our distribution infrastructure. Learn about them and how to report open or damaged electrical equipment.



[Contact Us](#)



What are the common problems of distribution boxes?

The main problems encountered with distribution boxes include installation and layout problems, electrical connection and grounding problems,

[Contact Us](#)



Contact Us

For datasheets, pricing, or custom fiber access solutions, please visit:
<https://frindel.es>