

Height of electrical distribution box in civil engineering shaft





Overview

The proper installation of a distribution box involves placing it at the right height to ensure safety and convenience.



Height of electrical distribution box in civil engineering shaft

Key Points Of Installation And Collocation Of Distribution Box In



Distribution box and switch box shall be made of iron plate or high-quality insulating material, and the thickness of iron plate shall be greater than 1.5mm. The electrical equipment in the distribution box

[Contact Us](#)

The height requirement of distribution box

The distribution box shall be installed horizontally and vertically. After the box is placed, the perpendicularity of the box shall be found with ruler board to meet the requirements.

[Contact Us](#)



Standard Heights for Electrical Switches

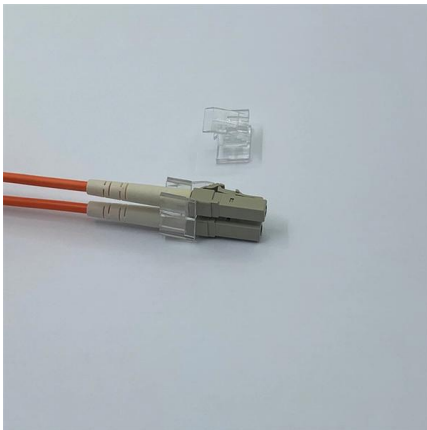
This document provides standard heights for various electrical switch boards and fittings in different rooms of a house. It lists the ideal heights in millimeters from

[Contact Us](#)



What is the Ideal Installation Height for a Distribution Box

Install a distribution box at 4.5 to 5.5 feet high for safety, accessibility, and compliance. This height ensures easy use and protection from hazards.



Construction of Transmission and Distribution Lines

A transmission substation decreases the voltage of incoming electricity, allowing it to connect from long distance high voltage transmission, to local lower voltage distribution.

[Contact Us](#)

Notes in preparation of an MV/LV substation civil

Civil construction drawings MV/LV substations are not only a point of supply but also provide a means of network isolation in the event of faults or

[Contact Us](#)



CEYLON ELECTRICITY BOARD

Electricity distribution has developed rapidly and various systems have been adopted with different pole sizes and materials for service connection construction.

[Contact Us](#)





CHAPTER 7 DESIGN FOR DISTRIBUTION FACILITIES

Necessary clearance between the feeder conductors and buildings, other electrical wires or trees can be secured (clearance under maximum sag should be examined).

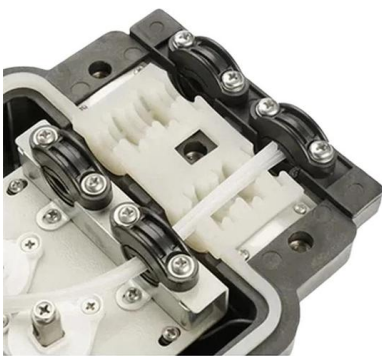
[Contact Us](#)



Installation requirements for distribution boxes

Distribution boxes shall be made of non-combustible materials; open distribution boards may be installed in production places and offices with low electric shock risk; enclosed cabinets shall

[Contact Us](#)



???? ????? Government of India

A standardisation technical committee has been constituted by CEA under the Chairmanship of Chief Engineer (PSETD), CEA comprising members from Pole manufacturers, CPRI, SERC, utilities etc.

[Contact Us](#)



Requirements And Specifications For Installation Of

The bottom edge of the distribution box is usually between 1.5 meters and 1.8 meters above the ground, which is convenient for operation and

[Contact Us](#)





SP 30 (2011): National Electrical Code 2011

All material, accessories, appliances etc., used in an electrical installation should conform to Indian Standards wherever they exist. There should be good workmanship and proper coordination and

[Contact Us](#)



How to Improve the Installation Quality of Distribution Boxes

According to standards, the height from the bottom edge of a distribution box to the floor is generally 1.5m, and for distribution boards, it should not be less than 1.8m.

[Contact Us](#)



Power distribution inside large buildings , EEP

Electrical engineering guides, research studies and papers Last updated on September 15th, 2017 Translate (Premium) Home / Download Center

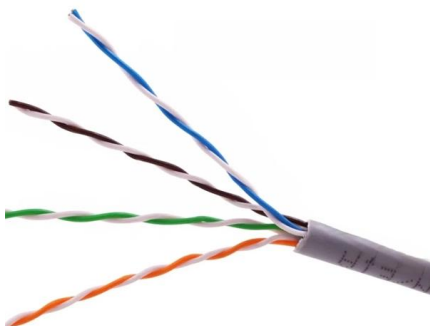
[Contact Us](#)



Embedded Installation Of Distribution Box

In the civil construction, when the installation height of distribution box or distribution board is reached (the height from the bottom edge of the box to the ground should be 1.5m, and the

[Contact Us](#)





Distribution Inside Large Buildings

Distribution Inside Large Buildings In large buildings the type of distribution depends on the building type, dimension, the length of supply cables, and the loads. The distribution system can be divided in to:

[Contact Us](#)



SDCS-02 CONSTRUCTION STANDARD FOR

Saudi Electricity Company provides guidelines, standards, and specifications for construction, operation, and safety of electrical equipment and systems in Saudi Arabia.

[Contact Us](#)

Embedded Installation Of Distribution Box

When the width of the distribution box is more than 500mm, it is required to install concrete lintels on the top of the box during civil construction; when the box width is 300mm or more,

[Contact Us](#)



The installation requirements for the distribution box

Ensure safe placement: install in dry, accessible areas with good ventilation and at appropriate height (typically ~1.5m). Practice good wiring:

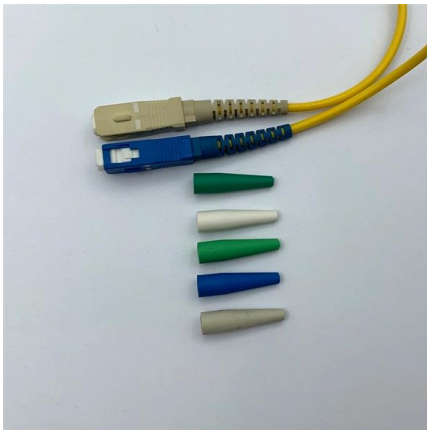
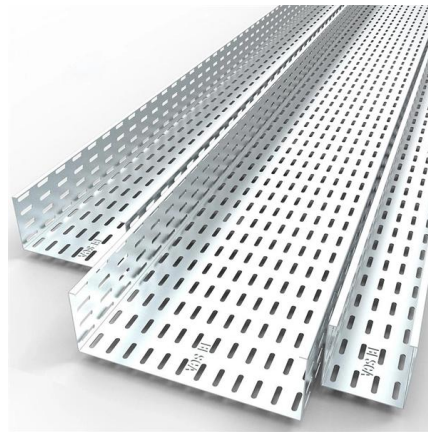
[Contact Us](#)



Size determination, installation method and wiring mode

The distribution box is the central hub of the home circuit and the general control of our daily power consumption. It is an indispensable electrical equipment. If there

[Contact Us](#)



Civil engineering in installation of substation buildings

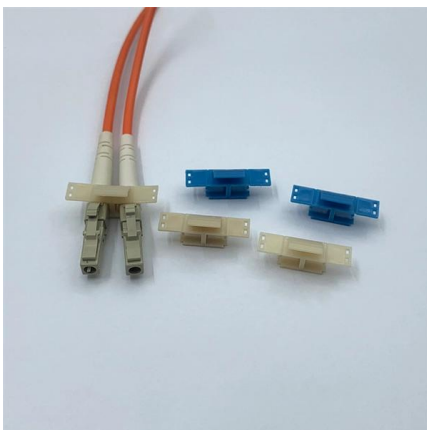
Indoor substation buildings & switchboard rooms
1. General When planning indoor installations of substation buildings and switchboard rooms, in

[Contact Us](#)

Standard Heights for Electrical Installations

The document provides guidelines for mounting heights for electrical switch sockets, light switches, and MCB distribution boards. It specifies the heights for different

[Contact Us](#)



CHAPTER 7 DESIGN FOR DISTRIBUTION FACILITIES

PDF file

Microsoft Word - METER ROOM_RE M final lastlast.doc

The number of the pipes shall be equal to the number of meter circuits defined by SEC planning engineers. Alternately the concerned SEC engineers can accept any suitable location



of pipes in

[Contact Us](#)

inside

Bus bar trunking can be installed in vertical risers shafts or horizontally in passages for transmission and distribution of power. They allow electrical installations to be planned in a simple and neat member.

[Contact Us](#)



SPECIFIC TECHNICAL REQUIREMENTS FOR TRANSMISSION LINE

SPECIFIC TECHNICAL REQUIREMENTS FOR TRANSMISSION LINE 1.0 The design, routing and construction of transmission lines shall be in accordance with Chapter-V, Part-A of CEA (Technical

[Contact Us](#)

Contact Us

For datasheets, pricing, or custom fiber access solutions, please visit:
<https://frindel.es>