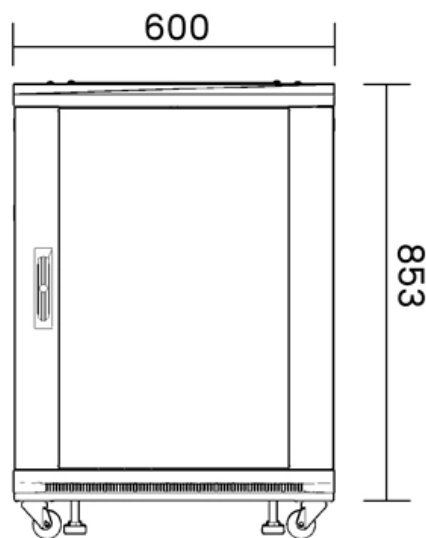


Height of Level 3 Distribution Box from the Ground



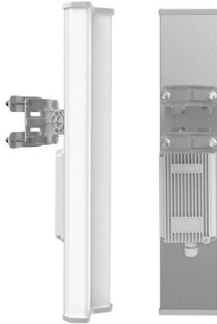


Overview

7 meters) high makes it easily accessible without the need to bend or stretch excessively. In industrial settings, you may need to adjust the height depending on the space and equipment around it. According to the "Code for Acceptance of Construction Quality of Building Electrical Engineering" GB50303-2002, the vertical distance between the bottom surface of the fixed stainless steel enclosure ip67 and the ground should be greater than 1. IEC-60364 and BS-7671 Guidelines for Garage Units, Consumer Units, and Distribution Boards The International Electrotechnical Commission (IEC) and the British Standard BS 7671 play pivotal roles in shaping the requirements for electrical installations. Publish Time: 03/08 2025 Author: Site Editor Visit: 918 The installation requirements and specifications of Distribution box involve many aspects, including site selection, fixing method, wiring specifications and safety protection.



Height of Level 3 Distribution Box from the Ground



Requirements And Specifications For Installation Of

The bottom edge of the distribution box is usually between 1.5 meters and 1.8 meters above the ground, which is convenient for operation and

[Contact Us](#)

How to Improve the Installation Quality of Distribution Boxes

The installation of the distribution box must be level and stable. According to inspection standards, the permissible vertical deviation for boxes with a height less than 50cm is 1.5mm, and for boxes 50cm



[Contact Us](#)



DB Height

6.6.1.6 Any point of a distribution board that has to be reached during normal operation shall not exceed a height of 2,2 m above floor (or walking) level. However, the board may be

[Contact Us](#)

How to Wire 3-Phase, 400V Distribution Board? IEC

Wiring 3-?, 400V Load Circuits in Distribution Board In a three phase distribution board, all the three phase, 400V load points can be connected directly to the



The Meaning and Function of Primary, Secondary, and Tertiary

Forms part of the three-level protection system. Features inner and outer doors, powder-coated exteriors, and rainproof tops for outdoor use. Tertiary Distribution Box: The system includes a

[Contact Us](#)

technical guidance for developers domestic electricity

meter box installation 450mm depth of cover required from finished ground level Hockeystick 38mm service duct

[Contact Us](#)



5-INCH COLOR TOUCHSCREEN

Intuitive operation, easily accessible with just one touch



The installation requirements for the distribution box

Introduction Understanding The Components of A Distribution Box Selecting The Right Distribution Box Site Preparation and Location Requirements Electrical Connections and Wiring Compliance with Standards and Regulations Conclusion Safety and Accessibility The location of a distribution box is key. You want it in a safe, dry, and easy-to-reach spot. Why? Because water and electricity don't mix. If the box gets wet, it can cause serious



problems, like short circuits or fires. That's why you should always choose a dry area, away from water sources like sinks, Standard Installation Heights and Positions The height at which you install your distribution box matters, too. For most homes, the standard height is around 1.5 meters (about 5 feet) from the ground. This height is comfortable for most people to access without straining. It also keeps the box out of reach of small children, adding an extra layer of safety. TSee more on eabel Published: Feb 7, 2025goodeelec

Installation Height And Location Selection Requirements For Ground

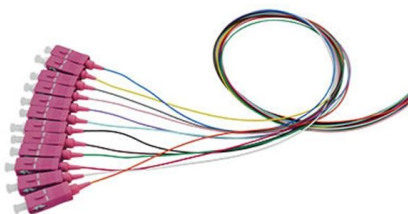
According to the "Code for Acceptance of Construction Quality of Building Electrical Engineering" GB50303-2002, the vertical distance between the bottom surface of the fixed stainless steel

[Contact Us](#)

Embedded Installation Of Distribution Box

In the civil construction, when the installation height of distribution box or distribution board is reached (the height from the bottom edge of the box to the ground should be 1.5m, and the

[Contact Us](#)



220V Outside disconnect box, height above ground level requirements

ADA, health facilities, etc. Flooding, snow, and application will drive where you put box. In your case, you want the box up off the ground at least 18 inches and where you can easily see and

[Contact Us](#)



IEC and BS 7671 Requirements for Consumer Unit and

Residential Settings: In residential environments, the recommended installation height for distribution boards and consumer units ranges from 1 to 1.8 meters

[Contact Us](#)



Outdoor Electrical Distribution Box Specifications: NEC

Complete specification guide for outdoor electrical distribution boxes covering NEC Article 312 requirements, NEMA ratings, sizing calculations, and

[Contact Us](#)



Switch board is fixed at a height of ____ as per IE rules

Mounting levels of the accessories and cables as recommended in B.I.S. and N.E.C. The height of main and branch distribution boards should be no more than 2m from the floor level. A front clearance of 1

[Contact Us](#)



Three-Tier Power Distribution System in a Newly Constructed

In a newly constructed residential area, a 10kV power line is introduced into the substation. After stepping down the voltage through the transformer's low-voltage side (0.4kV), power distribution is

[Contact Us](#)





What is the installation height of distribution box?

The height of the bottom of the box should not be less than 1.0m from the ground, and measures should be taken to prevent climbing. All the distribution boxes should be good protected

[Contact Us](#)



What is the Ideal Installation Height for a Distribution Box

Install a distribution box at 4.5 to 5.5 feet high for safety, accessibility, and compliance. This height ensures easy use and protection from hazards.

[Contact Us](#)

DB Height

level. (See also 5.3.8 (b)). Unless a residential distribution board is housed in an enclosure and direct access cannot be obtained by an infant, no part of an indoor distribution board

[Contact Us](#)



What is Level 1, Level 2 and Level 3 distribution box

Primary power distribution: temporary electricity is in a place where the construction needs electricity, that is, from the transformer into the three-phase power supply, ground wire, neutral line. Secondary

[Contact Us](#)



Standard Heights for Electrical Switches

It lists the ideal heights in millimeters from the floor level for items like main switch

[Contact Us](#)



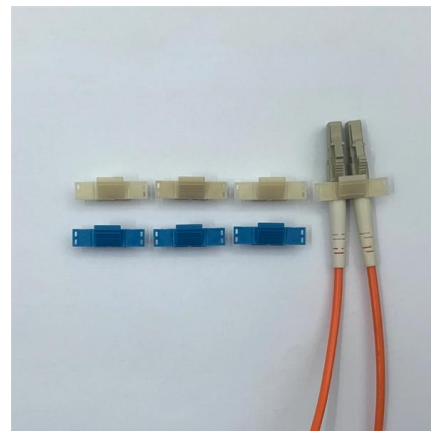
Essential Rules for 3-Level Electrical Distribution

Follow key principles: no cross-level wiring, one machine-one switch, [Contact Us](#)

What should the distance be between the floor and the

Approved Document M of the Building Regulations states that consumer units/fuseboxes should be mounted so that the switches are 1350-1450mm above

[Contact Us](#)



CHAPTER 7 DESIGN FOR DISTRIBUTION FACILITIES

Necessary height of the feeder conductors above the ground can be secured under the largest sag. Necessary clearance between the feeder conductors and buildings, other electrical wires or trees

[Contact Us](#)



Standard Heights for Electrical Switches

This document provides standard heights for various electrical switch boards and fittings in different rooms of a house. It lists the ideal heights in millimeters from

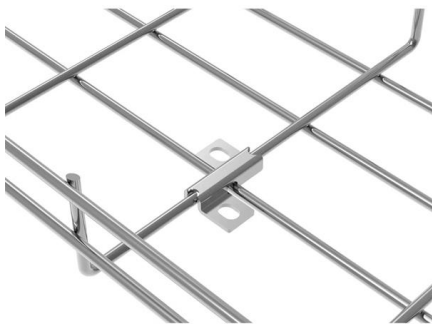
[Contact Us](#)



How to determine the size, installation method and

(1) Wiring method of distribution box 1)
Generally, the incoming line of power distribution box adopts five wire system, that is, a, B and C three-way phase line

[Contact Us](#)



The difference between the first, second, and third levels of

Third level distribution box: refers to the final junction box of each electrical appliance, which can be movable and fixed. Remember that the leakage protection switch is the last one, and

[Contact Us](#)



Installation points of household distribution box

The distribution box of household distribution box should not be installed too high. Generally, the installation elevation is 1.8m to facilitate operation; the electric pipe

[Contact Us](#)





Contact Us

For datasheets, pricing, or custom fiber access solutions, please visit:
<https://frindel.es>