

# **Grounding requirements for primary distribution boxes on construction sites**





## Grounding requirements for primary distribution boxes on construction

---



### Grounding & Bonding-Temporary Power Generation and Electrical Distribution

18 Abstract The subject of grounding and bonding can be confusing this is especially true for portable and vehicle (trailer) mounted generators used in the field to supply temporary/emergency

[Contact Us](#)

### 1926.404

All 120-volt, single-phase, 15- and 20-ampere receptacle outlets on construction sites, which are not a part of the permanent wiring of the building or structure and which are in use by employees, shall



[Contact Us](#)

### Electrical safety on construction sites

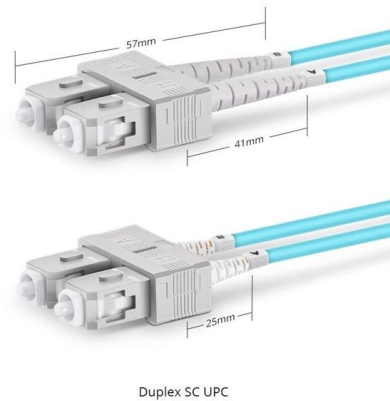
Revised guidance aligned to the health and safety when handling electrical devices on construction sites.

[Contact Us](#)



### 1926.404

General. The employer shall use either ground fault circuit interrupters as specified in paragraph (b) (1) (ii) of this section or an assured equipment grounding conductor program as specified in paragraph



### Earthing Design for 11/6.6kV Distribution Substations and Equipment

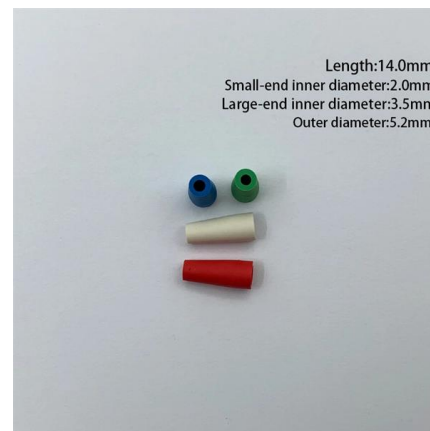
This Specification describes the requirements for the design and construction of Earthing Systems for 11/6.6kV distribution substations, detailing Electricity North West's preferred Earthing System

[Contact Us](#)

### Key Points Of Installation And Collocation Of Distribution Box In

1. The power distribution system at the construction site shall be distributed in different levels. The main distribution box (or distribution room) shall be set up. The distribution box shall be set

[Contact Us](#)



### Grounding Methods and Best Practices for High Voltage Transmission

With the rise of new utility projects due to the "electrification of everything" initiative, there is an increasing dependence on utilities for the safe and reliable distribution of power. Routine

[Contact Us](#)



## Grounding & Bonding Temporary Generators and

Technicians often have an "Anything Goes; It's Temporary" attitude about grounding, bonding, when dealing with the installation of temporary

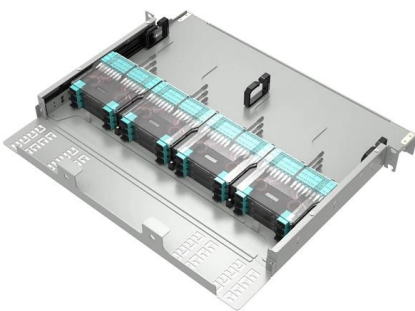
[Contact Us](#)



### Safety requirements of distribution box

The distribution box has the characteristics of small size, simple installation, special technical performance, fixed location, unique configuration function, not limited by

[Contact Us](#)



### Requirements for distribution box at construction site

1? The manufacture and installation of distribution box and switch box shall meet the following requirements: 1. The distribution box shall be made of iron plate or other fire-proof insulating

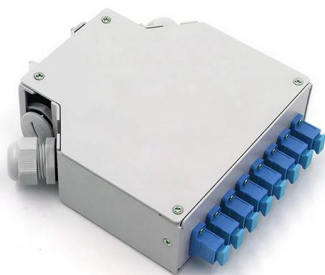
[Contact Us](#)



### Temporary electrical wiring for construction sites

All 120-volt, single-phase, 15- and 20-ampere receptacles shall be of the grounding type and their contacts shall be grounded by connection to the equipment grounding conductor of the circuit

[Contact Us](#)





### Primary Service Standards

These instructions define the areas in which assistance may be given to a primary customer to coordinate the customer's and DTE Electric systems, to increase the operating safety of high voltage

[Contact Us](#)

190X95X25mm



### Layout1

For grounding details see part-1 of grounding standard (typical arrangement of meter box as shown in Dwg.142 and Dwg.143 of Construction Standards SDCS- 01) Customer ground wire shall be installed

[Contact Us](#)

### 29 CFR Part 1926 Subpart K

All 120-volt, single-phase, 15- and 20-ampere receptacle outlets on construction sites, which are not a part of the permanent wiring of the building or structure and which are in use by employees, shall

[Contact Us](#)



### UNDERGROUND ELECTRIC DISTRIBUTION CONSTRUCTION

Any borings and sub-surface data including ground water elevations, underground utility and structural locations that may be furnished or indicated on the plans are presented only as information that is

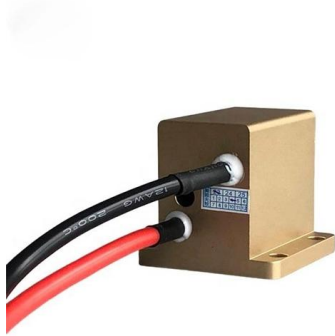
[Contact Us](#)



## 26 05 26 Grounding and Bonding Electrical Systems\_06\_15\_16

Ground all equipment with insulated ground wires run in conduit with circuit conductors. Construct metal raceway systems to create an independent and redundant ground path bonded to the ground wire at

[Contact Us](#)



### Grounding system construction: key points for grounding distribution

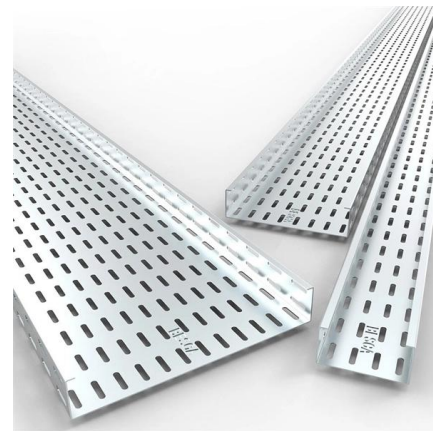
Grounding systems aren't just boxes and wires - they're the silent bodyguards protecting people and equipment from electrical disasters. When lightning strikes or a rogue voltage surge

[Contact Us](#)

### Gartner Business Insights, Strategies & Trends For

Gain strategic business insights on cross-functional topics, and learn how to apply them to your function and role to drive stronger performance and innovation.

[Contact Us](#)



### Grounding Practices in Power Distribution Systems

The installation of grounding methods for transmission lines is absolutely necessary in order to guarantee the safety, dependability, and effectiveness of power

[Contact Us](#)



## GROUNDING AND BONDING FOR ELECTRICAL SYSTEMS

The designer will evaluate the sizing of the grounding system and the need for an isolated or bonding ground system separate from the building grounding system.

[Contact Us](#)



### Protective grounding requirements for transmission and distribution

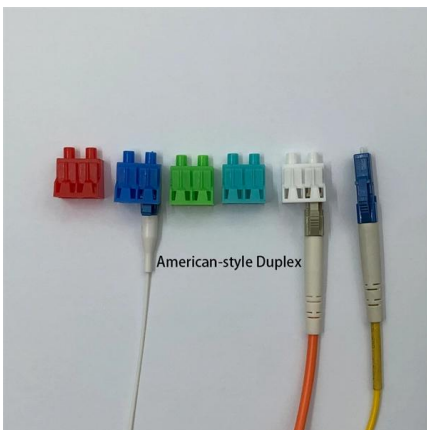
Introduction to protective grounding This technical article covers protective grounding requirements for steel tower and wood

[Contact Us](#)

### Grounding System Installation Standards for Distribution Boxes and

Whether you're a seasoned pro or just starting out, this comprehensive guide will give you practical insights into proper grounding techniques, with a special focus on how selecting quality materials

[Contact Us](#)



### Wiley Online Library , Scientific research articles, journals, books

Hier sollte eine Beschreibung angezeigt werden, diese Seite lässt dies jedoch nicht zu.

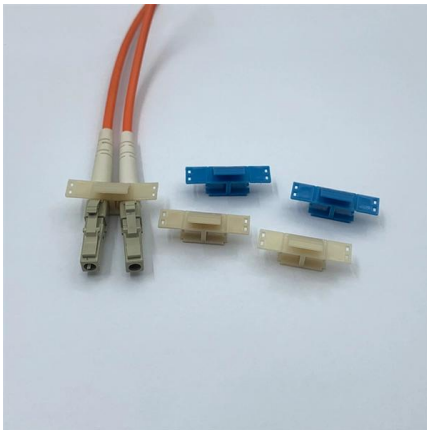
[Contact Us](#)



## Grounding Book 4/14/99

The requirements for grounding electrical services are contained in Article 250 of the NEC. Section 250-23(a) requires that a grounded electrical system, which supplies a building or structure, shall have at

[Contact Us](#)



### The installation requirements for the distribution box

Learn how to install a distribution box safely and correctly. Covers wiring, placement, standards, and expert tips for a compliant setup.

[Contact Us](#)



### The Essential Guide to Direct Grounding Boxes

Learn about the importance of direct grounding boxes in electrical systems, including benefits, installation, maintenance, and industry applications.

[Contact Us](#)



## Contact Us

---

For datasheets, pricing, or custom fiber access solutions, please visit:  
<https://frindel.es>