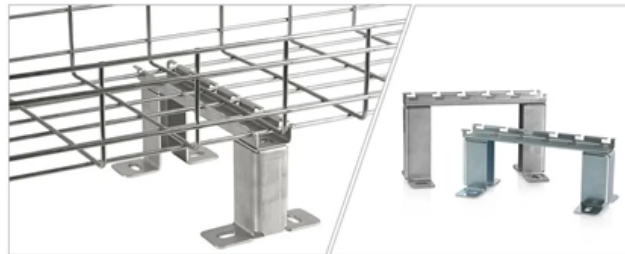


Grounding of concealed electrical box





Overview

To safely ground a metal box, connect an equipment grounding conductor (typically a bare or green insulated wire) from the box to the main electrical panel's ground bus bar. Understanding how to ground metal electrical box components is not just about following code—it's about protecting your home and family. In this article, we will take a look at the steps involved in grounding an electrical box and what you need to.



Grounding of concealed electrical box

How Do You Ground An Electrical Box

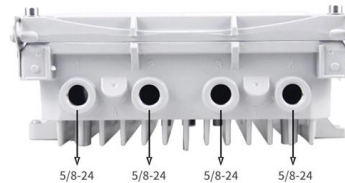


Grounding an electrical box is a crucial step in ensuring the safety of any home's wiring system. It is essential that electricians and homeowners

[Contact Us](#)

How To Properly Ground An Electrical Box

To prevent dangerous accidents from happening, it is essential to understand how to properly ground an electrical box. In this article, we will take a



[Contact Us](#)



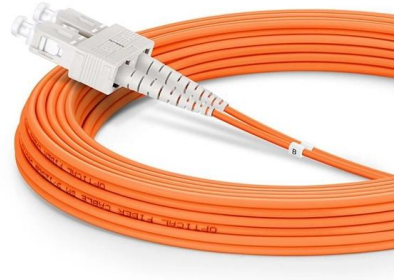
How To Ground A Circuit Breaker Box Safely: A Step-by

However, for experienced DIYers, this guide provides a detailed, step-by-step approach to ensuring your circuit breaker box is properly grounded,

[Contact Us](#)

The Importance of Protective Grounding Boxes for Safety

Learn about the benefits of using a protective grounding box to prevent electrical accidents and protect equipment. Find out how to choose the right device for your needs.



How To Properly Ground An Electrical Box

Without proper grounding, an electrical box can become a fire hazard. To prevent dangerous accidents from happening, it is essential to understand

[Contact Us](#)



How to Properly Ground a Metal Electrical Box

Ensure electrical safety. Learn the crucial steps for properly grounding metal electrical boxes to prevent shock hazards.

[Contact Us](#)



Steps in Installing Concealed Wiring at Home

Concealed wiring is one of the most popularly chosen types of internal wiring in both residential and commercial establishments. Electrical wiring

[Contact Us](#)





Electrical Box Ground Wire Connectors & Connections

This article describes options for connecting a metal electrical box to the grounding conductor & connecting the grounding conductor to a fixture such as a ceiling light or ceiling fan.

[Contact Us](#)



How Do I Ground an Electrical Box?

How Do I Ground an Electrical Box? requires connecting it to a grounding system, typically using a grounding screw and wire, to provide a safe path for fault current back to the

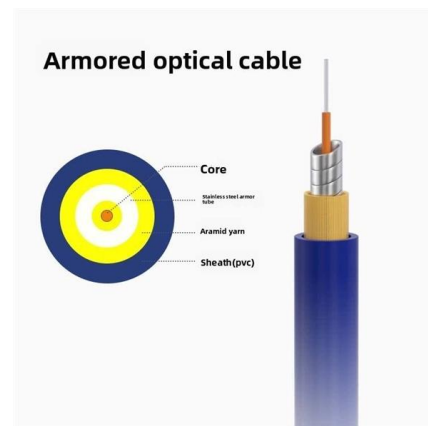
[Contact Us](#)



How To Ground Electrical Enclosure: The Complete Guide

From a safety perspective, an electrical enclosure should be positively and correctly grounded so as to rid any electrical faults. Resistance of

[Contact Us](#)



The Role of Grounding Box: An Important Tool for

The grounding box is an essential tool in electrical safety. It provides a low-resistance path for electrical energy to flow to the ground, preventing

[Contact Us](#)





The Direct Grounding Box: Importance and Applications

Learn about the significance of direct grounding boxes in electrical systems and their applications in various industries.

[Contact Us](#)



How to Install Concealed Conduit Electrical Wiring

Learn how to install concealed conduit electrical wiring systems with safety and functionality in mind.

[Contact Us](#)

The Role of Grounding Box: An Important Tool for

The grounding box is an essential tool in electrical safety, helping to prevent electrical shock and protect equipment from damage. Learn more about

[Contact Us](#)



How to Ground Electrical Wires

How to Ground Wires in Metal Boxes In a system with metal boxes, the pigtail method is considered the most secure. In this arrangement, both the

[Contact Us](#)



Diy electrical safety: grounding circuit breaker boxes for peace of

Understanding Grounding Grounding is a crucial aspect of electrical safety. It provides a safe path for electricity to flow in the event of a fault, preventing electrical shocks and damage to

[Contact Us](#)



How To Ground A Metal Box - Essential Steps For DIY Electrical Safety

Yes, according to modern electrical codes, all metal electrical boxes and enclosures that contain current-carrying conductors must be properly grounded. This includes junction boxes, switch

[Contact Us](#)

Electrical Junction Box NEC Code: Rules, Requirements

This guide explains the key NEC junction box requirements, including box fill, splice rules, accessibility, grounding, outdoor use, common violations,

[Contact Us](#)



Electrical Grounding Homeowner's Guide and How It Works

What Is Electrical Grounding? Grounding means connecting to the Earth or extending the ground connection to other things in your home, such as the metal frames and components of

[Contact Us](#)



Grounding Electrical Boxes

If a metal box is being used, best practice is to insert a green grounding screw into the threaded hole in the back of the box or enclosure. The

[Contact Us](#)



electrical

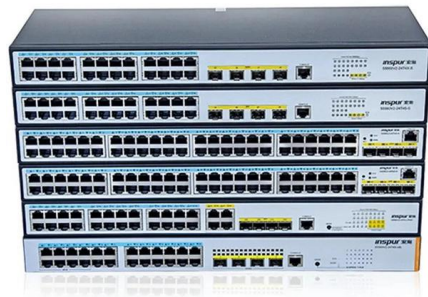
5 A safety-related problem with hidden junction boxes is that they can make it impossible to evaluate and correct dangerous conditions that might arise in future. If e.g. a home gets hit by a

[Contact Us](#)

Electrical Ground Box Guide: Types, Install, Safety

Electrical Ground Box Guide: Types, Install, Safety & Codes An electrical ground box, often simply referred to as a grounding box, plays a vital

[Contact Us](#)



Complete Guide to Concealed Wiring for Your Home

Learn all about concealed wiring, its advantages, and installation tips. Find out how to conceal wires on walls for a seamless and safe home electrical setup.

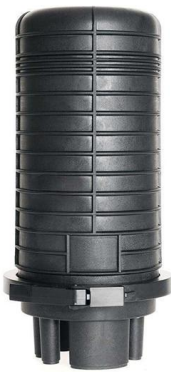
[Contact Us](#)



The Ultimate Guide to Protective Grounding Boxes

Learn everything you need to know about protective grounding boxes, including their importance, benefits, and how to choose the right one.

[Contact Us](#)



How To Ground Electrical Enclosure: The Complete Guide

Proper electrical enclosure grounding is a vital facet for providing safety, performance and uptime. However, it is always easy to overlook

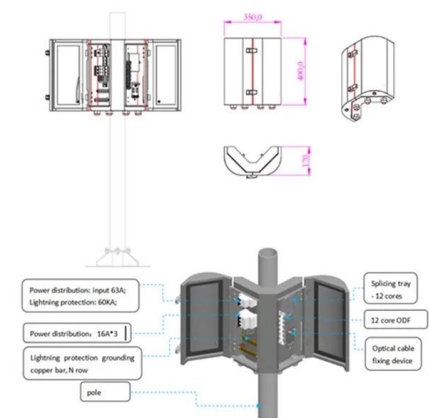
[Contact Us](#)



The Essential Guide to Direct Grounding Boxes

The Future of Direct Grounding Boxes As technology advances and electrical systems become more complex, the importance of direct grounding boxes will continue to grow. Innovations

[Contact Us](#)



electrical

I want to install new z-wave light switches that require a ground, but it appears that none of the electrical boxes in my house have ground wires and the previous light

[Contact Us](#)



How to Ground a Metal Electrical Box: A Step-by-Step Guide

Learn how to ground metal electrical boxes in 3 easy steps. This guide will help you safely and effectively ground your boxes, preventing electrical shocks and fires.

[Contact Us](#)



The Importance of Protective Grounding Boxes in Electrical Systems

Learn about the benefits of using protective grounding boxes to prevent electrical hazards and ensure worker safety. Find out how these safety devices work and why proper installation is crucial.

[Contact Us](#)

How to Ground Metal Electrical Box , 7 Easy Steps (2026)

Unlike plastic boxes, which are inherently non-conductive and do not require grounding, metal boxes are conductive and must always be properly

[Contact Us](#)



Contact Us

For datasheets, pricing, or custom fiber access solutions, please visit:
<https://frindel.es>