

Gigabit SFP slot compatible with 100Mbps optical modules





Gigabit SFP slot compatible with 100Mbps optical modules

10 Gigabit Optical Transceivers , SFP+ and XFP



Perle 10 Gigabit Optical Transceivers are interchangeable, compact media connectors and enable a single network device to connect to a wide variety of

[Contact Us](#)

MikroTik CRS310-1G-5S-4S+IN 10G SFP+ Managed L3 Switch 1U

Can I use 1G SFP modules in the 10G SFP+ slots of this MikroTik switch? Yes, the four SFP+ slots are backwards compatible and support both 10G and 1G fiber modules. Please note that the five



[Contact Us](#)



Network Transceivers

Whether you require an SFP network transceiver or an ethernet plug-in module, our selection offers compatible solutions to help you stay connected. Our comprehensive inventory of internet

[Contact Us](#)

Gigabit SFP optical transceiver modules

Many, although not all, 10G SFP+ ports have support to use a 1G SFP transceiver (or even a 100Mbps FX SFP transceiver). See the QuickSpecs for the Switch product and verify if the 1G or 100Mbps



100BASE SFP (mini-GBIC) Transceivers

FS offers a range of fast Ethernet 100M SFP transceiver modules, high performance and small form-factor pluggable, which provides flexibility for using fiber Gigabit

[Contact Us](#)



Gigabit Ethernet

Optical fiber transceivers are most often implemented as user-swappable modules in SFP form or GBIC on older devices. IEEE 802.3ab, which defines the widely used

[Contact Us](#)



SFP modules

The small form-factor plug-in module provides a fiber optic interface with a data transmission speed of 100 Mbps with a wavelength of 1310 nm (long).

[Contact Us](#)





Cisco GLC-GE-100FX: 100BASE-FX SFP for Gigabit Ports

GLC-GE-100FX is a Cisco SFP module that lets a Gigabit Ethernet port on a Cisco switch or router carry a 100BASE-FX optical link. A standard 1000BASE-SX or 1000BASE-LX SFP cannot

[Contact Us](#)



10G SFP vs 10G SFP+: Key Differences Explained [2025 Guide]

SFP (Small Form-factor Pluggable): originally defined for Gigabit Ethernet and Fibre Channel (100 Mbps-1.25 Gbps typical). Generic SFP mechanical dimensions are widely used, but

[Contact Us](#)

What Is an SFP Optic Module and How Does It Work

SFP optic modules convert electrical to optical signals for fast, long-distance data transfer. Hot-swappable, versatile, and compatible with various

[Contact Us](#)



Cisco Fast Ethernet SFP Modules

The Cisco® 100BASE-X Small Form-Factor Pluggable (SFP) device is a hot-swappable input/output device that plugs into Fast Ethernet ports, dual

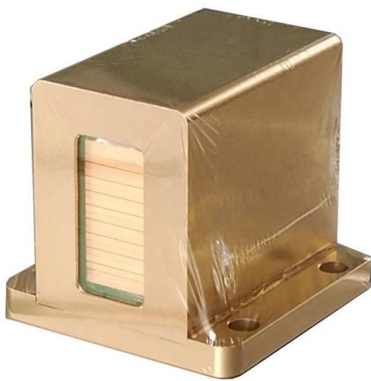
[Contact Us](#)



10G SFP vs 10G SFP+: Key Differences Explained [2025 Guide]

What each name actually means SFP (mali priključni modul): originally defined for Gigabit Ethernet and Fibre Channel (100 Mbps-1.25 Gbps typical). Generic SFP mechanical dimensions are widely used,

[Contact Us](#)



single mode sc fiber media converters , Newegg

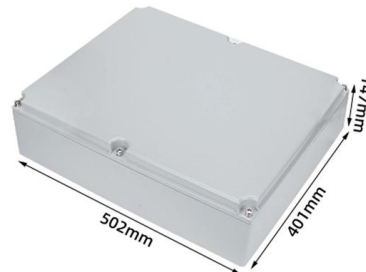
Compatible Brand: Devices with 10/100/1000 Mbps copper ports, 100 Mbps SFP slots (multimode or single-mode), Gigabit Ethernet devices, fiber optic devices, and devices that support SFP modules

[Contact Us](#)

10G SFP vs 10G SFP+: Key Differences Explained [2025 Guide]

Mechanically identical but electrically different: SFP+ is the correct, standards-backed choice for 10G. SFP is for 1G-class applications. Many SFP+ ports accept SFP modules for 1G backward

[Contact Us](#)



Server Smart Automation Tools , ASR1002-X, Cisco ASR1000

2y · Public Cisco A9K-MOD160-SE 160G 2x Module Slot (Service Edge) Router Line Card Specifications Expansion Slots : 2x Open Expansion Module Slots - Modules are not included and

[Contact Us](#)



Cisco SFP Modules for Gigabit Ethernet Applications

This data sheet describes the benefits, specifications, and ordering information for the Cisco SFP Modules for Gigabit Ethernet Applications.

[Contact Us](#)



K6097: Specifications of the Fiber Gigabit Ethernet SFP, XFP, SFP+

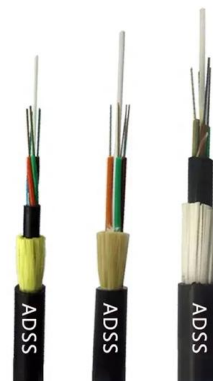
The following specifications are for the available Fiber Gigabit Ethernet modules and the platforms that support those modules. Important: The end user must ensure suitability of both the

[Contact Us](#)

SFP & SFP+ Transceiver Modules , 1G, 10G, 25G, 40G

Browse Lantronix's Copper SFP transceiver lineup -- featuring Cisco-compatible and MSA-compliant RJ-45 modules from 100Mbps to 10GBase-T, including hardened

[Contact Us](#)



KD Tech -- High-Speed Optical Connectivity

KD Tech designs semiconductor ICs for multi-gigabit optical networking over fiber optics. Solutions for automotive, industrial, and consumer connectivity.

[Contact Us](#)

What Is an SFP Port on a Gigabit Switch? Full Guide 2026



Learn what an SFP port is on a Gigabit switch, the types of SFP ports, SFP vs RJ45 differences, long-distance fiber options and real-world use

[Contact Us](#)



10G SFP vs 10G SFP+: Key Differences Explained [2025 Guide]

What each name actually means SFP (????? ????-???? ????): originally defined for Gigabit Ethernet and Fibre Channel (100 Mbps-1.25 Gbps typical). Generic SFP mechanical dimensions are

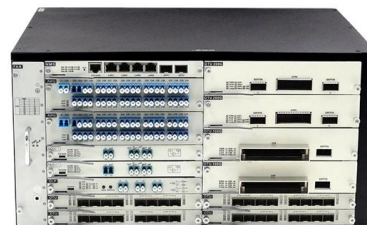
[Contact Us](#)



The Ultimate Guide to SFP Modules (2026): Types,

Confused by SFP vs SFP+? Read the definitive 2026 guide on SFP modules. We explain Single Mode vs Multimode, DDM diagnostics, and how to choose the right

[Contact Us](#)



100BASE FX SFP: Complete Guide to 100Mbps Fiber Transceivers

Gigabit SFP ports generally do not support 100Mbps modules unless explicitly dual-rate. Upgrading to 1Gbps may require replacing both modules and switching hardware.

[Contact Us](#)





TP-Link SG1210P 10-Port Desktop 8-Port PoE+

9 10/100/1000Mbps RJ45 ports, 1 Gigabit SFP port With 8 PoE+ ports, transfers data and power on one single cable Working with IEEE 802.3af/at compliant PDs, expands home and office network

[Contact Us](#)



What Is an SFP Module? (Comprehensive Guide Including Fiber Optic

The SFP module is precisely such a compact and versatile transceiver format, and it has now become the industry-wide standard for gigabit and higher-speed connections.

[Contact Us](#)

Amazon : Media Converter

A Pair of 1.25G/s Bidi Gigabit Single-Mode Fiber Ethernet Media Converter with 2PCS Bidi SFP LC Transceiver Module Included, 10/100/1000Base-Tx to 1000Base-SX SMF RJ45 to SFP Slot up to

[Contact Us](#)



What is SFP Port? Everything You Need to Know

What is an SFP port? The SFP port also refers to a Small Form-factor Pluggable port. It is a compact mechanical slot that accepts an SFP module

[Contact Us](#)



Pluggable Transceivers Installation Guide

The type of switch, router, or other component determines the compatible type of SFP module. Use only Extreme Networks-certified SFP, SFP+, and SFP28

[Contact Us](#)



Contact Us

For datasheets, pricing, or custom fiber access solutions, please visit:
<https://frindel.es>