

German Customs Declaration for OTN Router 200G





Overview

No, if you do not wish to carry out the customs declaration yourself, you can be represented by the German Post (Deutsche Post AG).



German Customs Declaration for OTN Router 200G



Customs declaration

As authorisation holder, you can submit a declaration in the form of an entry in your own records - if the details of that declaration are concurrently in possession of

[Contact Us](#)

Customs regulations: export and customs information , Support » DPD

We support you in compliance with all important customs regulations so that your international shipping is trouble-free.

[Contact Us](#)



Customs declaration

The customs declaration for the export of goods to countries outside of the EU no longer uses paper forms, which have been replaced by the electronic declaration in the NCTS custom system (ATLAS

[Contact Us](#)

Customs online

Entering Germany Restrictions You may not just bring everything that is on sale abroad with you. In Germany certain goods, such as pharmaceuticals, narcotics, but also media likely to harm minors



Declare goods to customs when importing via the Internet

If you are importing goods into Germany from outside the EU, you can submit the customs declaration via the Internet.

[Contact Us](#)



Declare goods to customs when importing via the Internet

If you are importing goods into Germany from outside the EU, you can submit the customs declaration via the Internet. Unfortunately this specification of service has not yet been

[Contact Us](#)

Fast shipment in stock Default white and black, contact customer service for notes

4U standard model



Declaring goods to customs when importing via the Internet

You have the option of using the Internet customs declaration (IC). You can only use the IC if the goods are to remain in the EU permanently. You cannot use it for other customs procedures,

[Contact Us](#)





Import Germany import declaration 3

If the customs declaration is free of errors, customs will send a customs decision with a job number (ATA number). After the presentation of the goods, customs sends a second customs decision, an ATC

[Contact Us](#)



German customs clearance: requirements, steps, costs,

Learn what's required for German customs clearance, which documents you need, how VAT and duties are calculated, and how to avoid delays.

[Contact Us](#)



Customs fees and customs duties

Shipping cost exception In the case of non-commercial goods imports, the shipping costs are not to be included, unless these are included in the customs value of

[Contact Us](#)



Certificates of origin and supplier declarations

Supplier declarations are used for the movement of goods within the EU and certify the preferential origin of a good. The goods can therefore be delivered with a customs concession.

[Contact Us](#)





Customs online

If you are staying in Germany you can usually bring properties in your baggage into Germany at zero import duty and without customs formalities. Restrictions However, you should bear in mind that

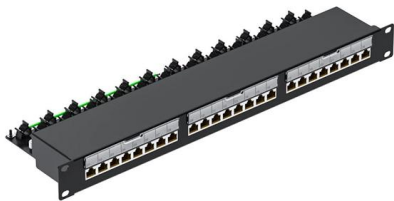
[Contact Us](#)



Import Germany import declaration 3

Import Germany This chapter describes the import procedure in Germany. Goods can be imported using the standard procedure or the simplified procedure. Simplified procedures must be authorized by the

[Contact Us](#)



CUSTOMS REGULATIONS AND INFORMATION FOR IMPORTS

The Customs Declaration should be provided by the local agent in Germany. Proof of residency/registration may not be older than 3 months. Household goods must have been owned

[Contact Us](#)



Declarant Date of relocation

Customs declaration for the placement of goods under the special procedure for end-use Sheet 1 - For the customs office of placement Sheet 2 - For the declarant Sheet 3 - For the supervising customs

[Contact Us](#)

E-Commerce Guidelines: Customs in



Germany and the EU

In order to enable efficient and cost-effective customs declarations, even for shipments with a low intrinsic value of up to EUR 150, the German customs authority, for example, is planning special

[Contact Us](#)



Customs online

Private individuals Topics in the area "Private individuals": Overview Travel Staying in Germany Postal consignments, internet order Work Customs Portal

[Contact Us](#)

Customs online

Table of contents Entering Germany from a non-EU country Obligation to declare in writing or orally Any person entering Germany from a non-EU country and carrying cash with a total value of 10,000 or

[Contact Us](#)



Declare cross-border shipments of commercial goods to customs

To make it easier for you to place your goods under the Union transit procedure via ATLAS, German customs has set up an internet platform. You can use this to enter your customs declaration data and

[Contact Us](#)



Customs information for sending parcels internationally , DHL

The information on the customs declaration helps the customs authorities to determine the country-specific customs duties and import taxes that must be paid by the recipient in each case. In some

[Contact Us](#)



Customs information for sending parcels internationally , DHL

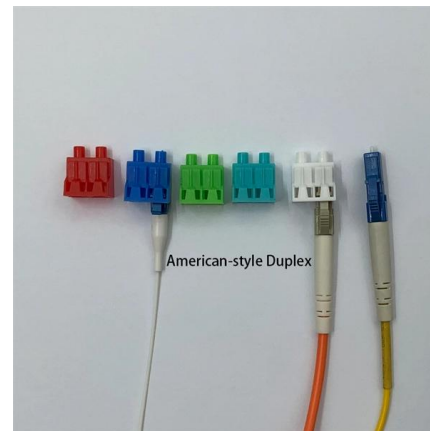
For shipments to countries outside the EU, always attach carefully completed customs declarations (CN23 or CN22) to the item. The required number of customs declarations depends on the country.

[Contact Us](#)

Customs online

Electronic customs declarations for consignments of a value up to 150 euros All goods for commercial purposes must be declared with an electronic customs declaration.

[Contact Us](#)



DETAILS DISPLAY



Focus On Every Detail



01

Neat & Clean
Layout



Cleaner arrangement
of components,
Easy to operate

Customs online

An electronic customs declaration (ATLAS) or an electronically transmitted customs declaration (internet import declaration, German: Internet-Zollanmeldung- Einfuhr - IZA) is always required for

[Contact Us](#)



Contact Us

For datasheets, pricing, or custom fiber access solutions, please visit:
<https://frindel.es>