

German Core Switch 800G





German Core Switch 800G



Cisco N9364E-SG2 Switches Data Sheet

The Cisco N9364E-SG2 are 2-Rack-Unit (2RU) 64-port 800 Gigabit Ethernet switches available in both QSFP-DD and OSFP form factors. They support 51.2 Tbps of bandwidth and

[Contact Us](#)

800G Solutions

For the most demanding environments, the 800G routing and switching platforms provide flexibility and choice for large scale cloud, AI, leaf and spine, routing

[Contact Us](#)



Edgecore Announces an 800G-Optimized Switch that

Edgecore Networks is the leader in open networking, providing a full line of open 1G-800G Ethernet switches, core routers, cell site gateways, virtual

[Contact Us](#)

The Technical Solutions of FS 800G Transceivers

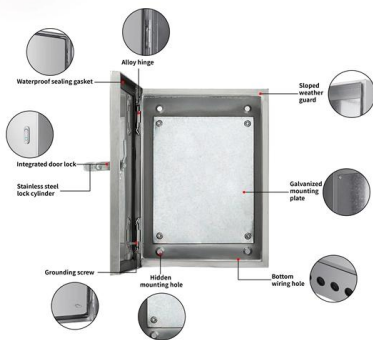
The FS 800G SR8 module provides high-speed connectivity for data center architectures, enabling them to cope with the ever-increasing demands of



Supernano SSE-T8164 800G Ethernet Switch

The SSE-T8164 comes with 64 OSFP 800G ports in a 2RU form factor to meet the leaf, spine and super spine datacenter architectures. The interfaces provide flexibility to meet a variety of speeds and use

[Contact Us](#)



Edgecore Announces an 800G-Optimized Switch that Provides an

Edgecore Networks is the leader in open networking, providing a full line of open 1G-800G Ethernet switches, core routers, cell site gateways, virtual PON OLTs, optical packet transponders, and Wi

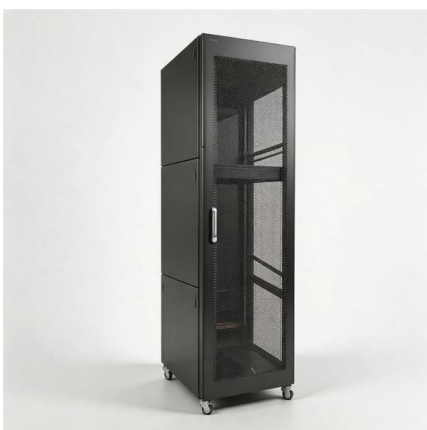
[Contact Us](#)



2024-010-AS9817-640_Accton R03 20240703

800G DATA CENTER SWITCH AS9817-640 The Accton AS9817-640 is an 800G high-performance switch platform for modern data center applications. The switch provides line-rate L2

[Contact Us](#)



Data Center Switch



Celestica's 800G Family of Network Switches are purpose-built to support cutting-edge AI/ML and HPC requirements. The DS5000 delivers unparalleled high

[Contact Us](#)



AIS800-32D

The Edgecore AIS800-32D delivers exceptional 25.6 Terabit performance in a compact 1RU form factor, featuring 32 x 800G QSFP-DD800 ports built on Broadcom's Tomahawk 5 silicon. This high-density,

[Contact Us](#)



800G Data Center Switches

The S9320-32ED 800G Data Center Switch offers 8x 800GE & 24x 400GE ports, advanced AI/ML traffic control, and 16 Tbps capacity, ideal for high-performance computing.

[Contact Us](#)



FS 400G/800G Open Networking Switch for Scalable AI and Multi

FS 400G and 800G open networking switches, built on high-performance chip architectures with disaggregated hardware design, deliver breakthroughs in forwarding capacity,

[Contact Us](#)





Edgecore Networks debuts 800G switch to power AI/ML

The Taiwan-based vendor is out with its new 800G-optimized switch that provides high-performance Ethernet fabrics for AI/ML deployments. The new

[Contact Us](#)



AIS800-64D: High-Performance ai switch for Data Centers

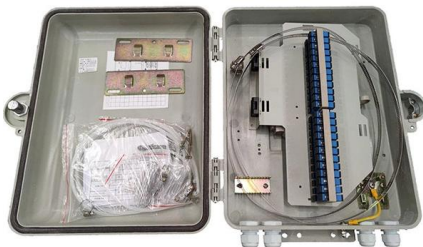
64 x QSFP-DD800 switch ports with Tomahawk 5 High-performance, low-latency switch for high-performance data centers

[Contact Us](#)

Networking Unleashed: Edgecore's New 800G

Innovative Chip Technology with Broadcom Tomahawk 5 Silicon: At its core, the Edgecore 800G Tomahawk 5 incorporates Broadcom's latest

[Contact Us](#)



H3C's Core Liquid Cooling Breakthrough: Redefining 800G Switch

Building on its S9827 series 800G switch platform, which already incorporates liquid cooling design and has been validated through large-scale deployments, H3C has refined liquid

[Contact Us](#)



Edgecore Networks AIS800-32D , 800G Cloud& Data

Edgecore AIS800 is a high-performance 800G QSFP-DD switch designed for advanced data center and AI network environments that require high bandwidth,

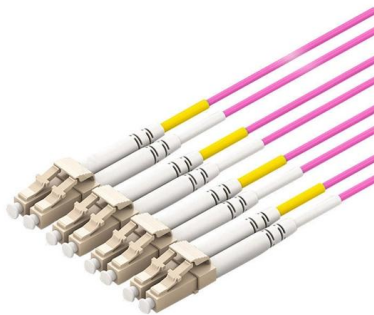
[Contact Us](#)



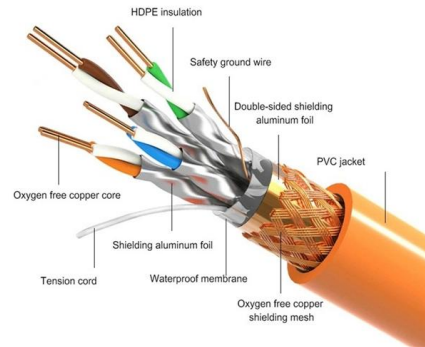
FS Launches Cutting-Edge 400G and 800G AI Ethernet Switches

FS has launched new 400G and 800G Ethernet switches designed for AI applications, featuring high switching capacity and low-latency networking solutions.

[Contact Us](#)



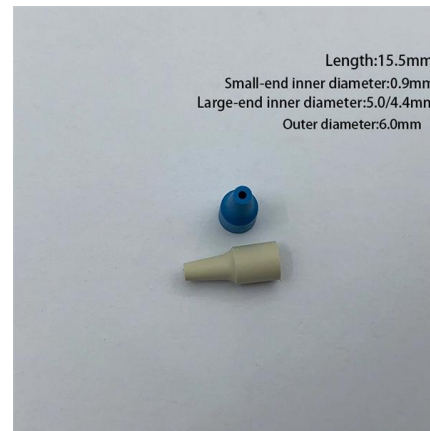
PRODUCT DETAILS



AIS800-32O

A next-generation, highest-capacity switch for data center spine use case. Breakout options include 2 x 400G, 4 x 200G, and 8 x 100G per port, with a maximum of

[Contact Us](#)



Products:800G Data Center Switch SNK-60x0-320F-Alpha Networks Inc.

800G Data Center Switch SNK-60x0-320F Key Features o AI Data Center Switch o 32 x 800G OSFP o 1 x 25G SFP28 inband management port o 1 x RJ-45 Out-of-Band (OOB) management port o 1 x USB

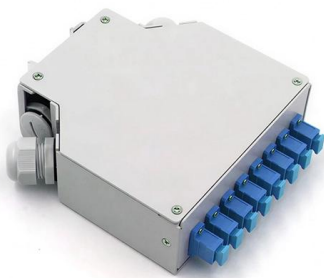
[Contact Us](#)



AIS800-640

The Edgecore AIS800-640 is an 800GbE high-performance switch powered by Broadcom Tomahawk 5, delivering ultra-low latency and up to 320 logical ports.

[Contact Us](#)



800G Solutions

Comprehensive 800G Platforms For the most demanding environments, the 800G routing and switching platforms provide flexibility and choice for large scale cloud,

[Contact Us](#)

Edgecore Networks AIS800-320 , 800G Cloud& Data

Description Edgecore AIS800 is a high-performance 800G OSFP switch developed by Edgecore Networks and Celestica for advanced data center and AI network

[Contact Us](#)



800G Data Center Switches

The Edgecore AIS800-64D / DCS560 is a high-performance, low-latency switch ideal for data centers, AI/ML clusters, and high-performance computing. It features 64x QSFP-DD800 ports and offers

[Contact Us](#)



Edgecore Unveils an 800G-Optimized Switch

Edgecore Networks, the enabler in open networking solutions, has announced an 800G-optimized switch, the DCS560, which can provide an Ethernet-based fabric for AI/ML workloads.

[Contact Us](#)



The Rise of 800G Ethernet: FS 800G AI Switches for

Discover 800G Ethernet technology and FS 800G AI switches, delivering ultra-high bandwidth, low latency, and lossless performance for AI/ML

[Contact Us](#)

AIS800 Data Center Switch DATA CENTER SWITCH

Edgecore Networks Corporation serves customers and partners worldwide. Additional information can be found at Edgecore Networks Corporation is a subsidiary of Accton

[Contact Us](#)



Powerful AI Switch for High-Performance Networks

AI Switch Modern operators demand a high-performance and resilient network infrastructure to effectively support AI/ML solutions while ensuring cost efficiency

[Contact Us](#)



Unleash the Power of Cutting-Edge Connectivity with

Discover Edgecore Networks' 800G-optimized switch, delivering cutting-edge connectivity for AI/ML workloads. Choose between OSFP800 or QSFP-DD800

[Contact Us](#)



Contact Us

For datasheets, pricing, or custom fiber access solutions, please visit:
<https://frindel.es>