

# Gas Explosion-Proof Lighting Distribution Box





## Gas Explosion-Proof Lighting Distribution Box

---



### Explosion-Proof Lights, Explosion-Proof Junction Box,

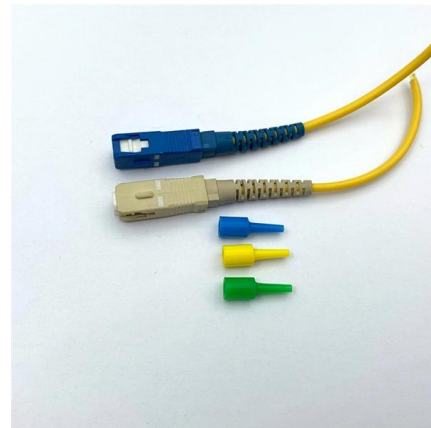
Explosion-Proof Light Explosion-proof lights used in hazardous areas where combustible gases and dust exist, which can prevent arcs, sparks, and high

[Contact Us](#)

### Model and Specification of Explosion-Proof Distribution Box

Explosion-proof lighting distribution boxes and cabinets come in a variety of models. They vary in terms of materials, including metal and flame-retardant plastic; installation methods, such as

[Contact Us](#)



### Illumination Distribution Boxes Manufacturer & Supplier , For

Order Explosion Proof Illumination Distribution Boxes from Warom Technology, a trusted manufacturer and supplier, designed for industrial lighting automation, hazardous electrical systems, nuclear

[Contact Us](#)



### Explosion-proof Distribution Box\_Explosion-proof electrical appliances

G58-Series 1. It is widely used in flammable and explosive gas environment such as oil exploitation, refining, chemical industry, offshore oil platform, oil tanker, etc. It is also used in flammable dust



### **Explosion-Proof Distribution Boxes & Panels Manufacturer**

The explosion-proof distribution box safely delivers power in hazardous zones (oil, gas, chemical plants) with rugged, spark-resistant casing--ATEX/IECEX, IP66 certified for reliable operation in explosive

[Contact Us](#)



### **BXM (D)51 Series Explosion proof Distribution Boxes**

BXM (D)51 Explosion proof Distribution Boxes  
Explosion protection to -CENELEC -IEC -NEC Can be used in Zone 1 and Zone 2 Zone 21 and Zone 22 Class I, Zone

[Contact Us](#)



### **Explosion-Proof Electrical Distribution Boxes: Applications in**

Find out how explosion-proof electrical boxes keep people and equipment safe in risky environments like oil, gas, and chemical industries !

[Contact Us](#)

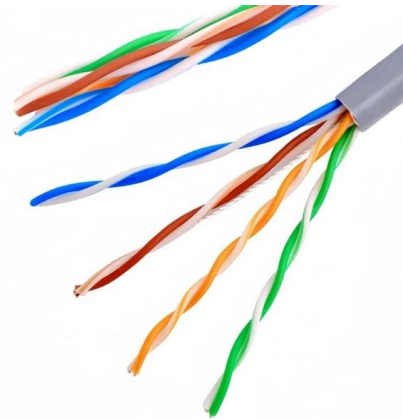




## Flameproof Distribution Board , Explosion proof

An ordinary distribution board may generate heat and sparks due to heavy usage. Thus, the flameproof/explosion-proof distribution box/panel is used in hazardous

[Contact Us](#)



## Explosionproof stainless steel lighting ( power )

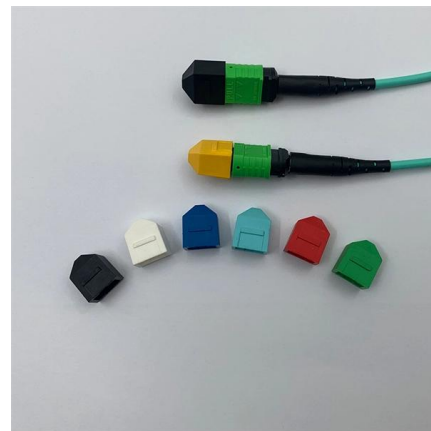
This series of products have good explosion-proof function, suitable for IIA, IIB, IIC explosive gas environment and various flammable and explosive sites, mainly

[Contact Us](#)

## Explosion Proof Lighting Distribution Box , Ouhui Lighting Solutions

BXM (D) Explosion proof Lighting ( Power ) Distribution Box This series of products have good explosion-proof function, suitable for class II A, II B, temperature group T1-T4 explosive gas

[Contact Us](#)



### DETAILS DISPLAY

Focus On Every Detail



**01**  
**Neat & Clean  
Layout**  
Cleaner arrangement  
of components,  
Easy to operate

## Explosion proof Lighting Distribution Box- Ouhui Lighting

BXM (D) Explosion proof Lighting ( Power ) Distribution Box BXM (D) Explosion proof Lighting ( Power ) Distribution Box This series of products have good explosion

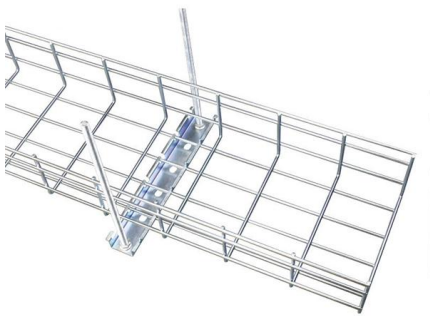
[Contact Us](#)



## Ex-Solutions

Versatile, shock-resistant, and explosion-proof lighting with a slim design, the XLN17-EM Series can be mounted in various hazardous locations, ranging from mines to petrochemical facilities.

[Contact Us](#)



### explosion proof light box-Explosion Proof Electric

BXM (D) Explosion proof Lighting ( Power ) Distribution Box This series of products have good explosion-proof function, suitable for class II A, II B, temperature group

[Contact Us](#)

### Explosion protective components & systems , Products , ABB

From its global facilities ABB manufactures a wide range of ATEX, IECEx, UL, CSA approved electrical products for hazardous area applications. These include cable glands and lighting ranges.

[Contact Us](#)



### Electric switches,junction boxes,control station,explosion and

The Pioneers in India and a leading manufacturer of an extensive range of Explosion proof equipment that is innovation driven and is committed to carve a niche for itself as a renowned Ex equipment

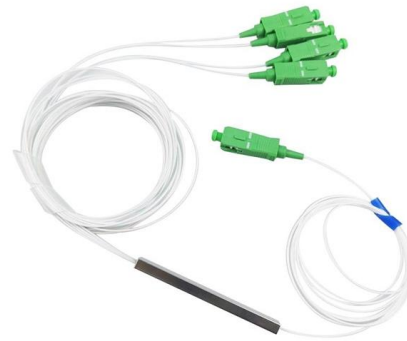
[Contact Us](#)



### **Explosion-proof illumination (power) distribution box**

It is widely used in flammable and explosive gas environment such as oil exploitation, refining, chemical industry, offshore oil platform, oil tanker, etc. It is also used in flammable dust places such as military

[Contact Us](#)



### **Terminal boxes , Junction boxes , Ex , Ex e , Ex d , ATEX , Explosion**

Safely conduct, connect and distribute energy in hazardous areas with R. STAHL's terminal boxes. We offer bespoke, custom-made terminal boxes and terminal box combinations, as well as standard

[Contact Us](#)

### **Explosion-proof illumination (power) distribution box**

4. Adopting the patented technology of the combined explosion-proof distribution box independently developed by the company, the modularization optimization design and combination of the

[Contact Us](#)



### **How to Wire an Explosion-Proof Distribution Box and**

Explosion-proof electrical equipment, such as explosion-proof distribution boxes, is specifically designed for hazardous environments where flammable gases,

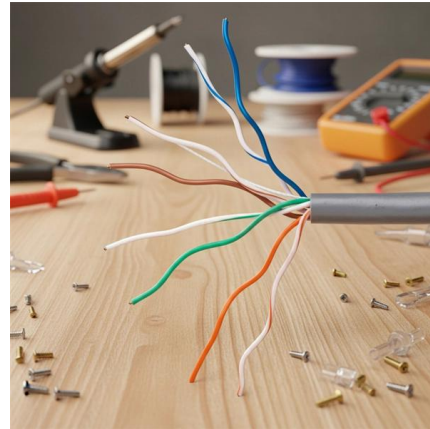
[Contact Us](#)



## Explosion proof distribution box standards and installation issues

I. Explosion-proof distribution box general standards Distribution box production technology indicators to meet the specifications and design requirements, and in accordance with the provisions of the

[Contact Us](#)



## Explosion-Proof Lights, Explosion-Proof Junction Box,

Shenhai: With 25 years of expertise, we lead in manufacturing high-quality explosion-proof lights, junction boxes, and pipe fittings for hazardous environments.

[Contact Us](#)

## ATEX SPLITTER BOX

The Wolf ATEX Splitter Box is compact, portable and CE marked to the ATEX Directive for safe use in Zones 1 and 2 potentially explosive gas and Zones 21

[Contact Us](#)



## Explosion proof Power Distribution Panel Box

Power Distribution panel box - Hazardous locations for explosive gas mixtures: Zone 1 and Zone 2. Explosive gas mixtures: Class IIA, IIB, and IIC.

[Contact Us](#)



## Contact Us

---

For datasheets, pricing, or custom fiber access solutions, please visit:  
<https://frindel.es>