

G652 single-mode fiber refractive index and refractive index difference





G652 single-mode fiber refractive index and refractive index difference



Characteristics of Single-Mode Fibre , PDF , Dispersion

This document describes ITU-T Recommendation G.652 which specifies the characteristics of a single-mode optical fiber cable. It covers the geometrical and

[Contact Us](#)

Differences Between G.652, G.655, and G.657 Fiber Types

Technical comparison of G.652, G.655 and G.657 fibers including refractive profiles, bending performance, dispersion, and application use cases.

[Contact Us](#)



Optical Fiber Single-Mode Fiber G652.D (008)

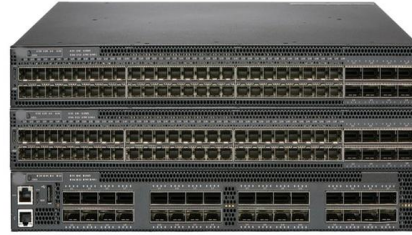
"Leviton is dedicated to designing, developing and manufacturing sustainable high performance structured cabling and specialty cabling solutions." The information contained in this document is

[Contact Us](#)



Segmented cladding fiber with a high-index ring in core for

By taking these advantages of the high-index-ring-assisted core, the effective single-mode (SM) operation is achieved in the proposed fiber bent in any orientation, which makes up the defect of



Multimode Graded Index Fiber: What It Is And Why You

Graded-Index Fiber, also known as G.651.1 under International Telecommunication Union (ITU) standards, is a type of fiber whose refractive index decreases

[Contact Us](#)

G.652 Single-Mode Fiber: Characteristics and Applications

The difference in refractive index between the core and cladding allows the light signal to propagate within the core, thereby reducing signal loss. The

[Contact Us](#)



Huai WEI , Professor (Associate) , Beijing Jiaotong

Erbium-doped photonic crystal fiber (EDPCF) is not in the endless single-mode as the refractive index of the core in EDPCF is higher than that of silica cladding.

[Contact Us](#)





ITU-T G.652: Single-Mode Optical Fiber Characteristics

ITU-T G.652 Recommendation details single-mode optical fiber and cable characteristics, including geometrical, mechanical, and transmission attributes.

[Contact Us](#)



Fiber Optic Splitter: How It Works & Types Guide

This guide demystifies fiber optic splitters, explaining their design, operating principles, types, key specifications, and real-world applications.

[Contact Us](#)

Classification and comparison of G. 652 and G.655

Among them, G. 652D single-mode fiber is the most stringent index single-mode fiber in all G.652 levels, and it can be completely downward

[Contact Us](#)



The Difference Between G652,G657A,G655 And G654

Common optical fiber and differences: G652: Standard single mode fiber, zero dispersion point is in 1300nm,divides into G652A,B,C,D.The main

[Contact Us](#)



Guide to Single Mode Fiber Types: G.652, G.655, G.657 Explained

Before diving into each type in detail, here's a quick comparison table showing the key differences among the most common single mode optical fiber types. This overview helps you see

[Contact Us](#)



The difference between single -mode optical fiber

Additionally, G657A2 fibers have a different shape and refractive index profile, which allows for better bend performance. Attenuation: G657A2

[Contact Us](#)

G.652.D Single-Mode Optical Fibre Specifications

G.652.D Single-Mode Optical Fibre Specifications

*Values for cabled fibre, local attenuation discontinuity [Contact Us](#)



Single-Mode Fibers: G652D vs

G652D features a standard step-index refractive index profile, with a pure silica core and doped cladding. Its backward compatibility with earlier G652

[Contact Us](#)



Differences Between G.652, G.655, and G.657 Fiber Types

G.652, G.655, and G.657 are ITU-T standardized singlemode fiber types used across long-haul, metro, ODN, and FTTH networks. Each fiber type is

[Contact Us](#)



What Is G.652 Fiber? G.652 vs G.652.D, G.652 vs

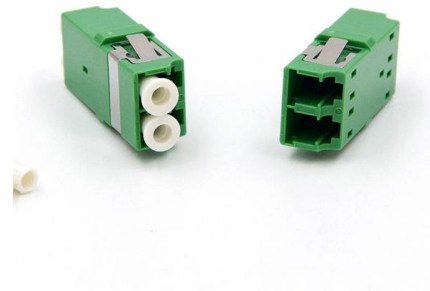
G.657 fiber is designed to be compatible with G.652 fiber but is less bend-sensitive, which means it produces lower levels of attenuation due to

[Contact Us](#)

The difference between G652,G657A,G655 and G654

G652: Standard single mode fiber, zero dispersion point is in 1300nm,divides into G652A,B,C,D.The main difference is PMD. It's feature is that the fiber dispersion

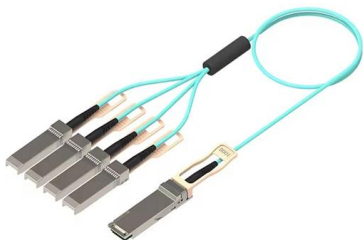
[Contact Us](#)



G.652

The G.652 recommendation specifies the optical and geometric parameters of single-mode fibers, including their core and cladding dimensions, refractive index profile, attenuation (signal

[Contact Us](#)





G.652.D vs G.657.A1 vs G.657.A2: What's the

FS offers high-quality and comprehensive fiber optic solutions, encompassing bend-insensitive fibers compliant with multiple standards such as

[Contact Us](#)



Rear of the optical fiber distribution box



ITU-T Rec. G.652 (11/2009) Characteristics of a single-mode optical

Characteristics of a single-mode optical fibre and cable Summary Recommendation ITU-T G.652 describes the geometrical, mechanical and transmission attributes of a single-mode optical fibre and

[Contact Us](#)

Single Mode vs. Multimode Fiber Optic Cables

There are two main types of fiber optic cables: single mode and multimode. Although they can do the same job in some instances, the different

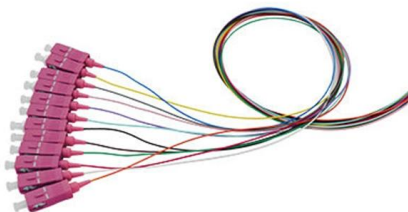
[Contact Us](#)



12 Core Single Mode Fiber Optic Cable

Shop high-quality 12 core single mode fiber optic cables for reliable communication. Enjoy durable, efficient, and cost-effective solutions for your needs.

[Contact Us](#)





Smart optical nanocomposites enabled by refractive index engineering

Smart optical nanocomposites, capable of dynamically altering their optical properties, are poised to revolutionize next-generation optoelectronic technologies. Precise and active manipulation of the

[Contact Us](#)



G.652.D Single-Mode Optical Fibre Specifications

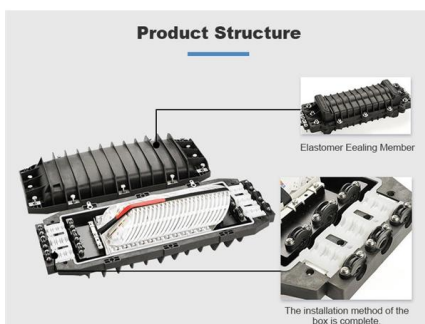
Parameters are subject to change without notice.

[Contact Us](#)

Refractive-index profile of G652 fiber.

Refractive-index profile of G652 fiber. The effects of fiber structure on Rayleigh scattering were investigated in detail. Some step-index fibers such as GeO₂- and F-doped silica-based

[Contact Us](#)



G.652.D Single-mode Low Water Peak Fiber Specifications

ITU-T Compliance Meets or exceeds ITU recommendations for G.652.D and the IEC60793-2-50 type B1.3 Optical Fiber Specification

[Contact Us](#)



Contact Us

For datasheets, pricing, or custom fiber access solutions, please visit:
<https://frindel.es>