

# **Function of the small busbar in the central power switch**





## Function of the small busbar in the central power switch

---



### Busbar: Definition, Function and Application

In the field of electrical distribution, busbars play an important role. As a channel for power transmission, the busbar plays a key role in ensuring the

[Contact Us](#)

### What Is a Bus Bar in Electrical Engineering? Full Guide

Discover what a bus bar is in electrical systems, how it works, the different types, materials used, key benefits, and where it's applied. Cover everything you need

[Contact Us](#)



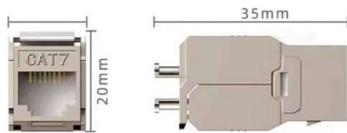
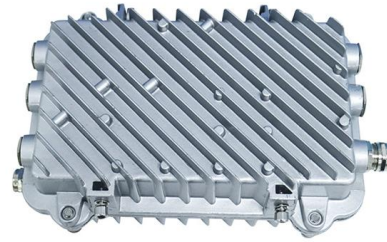
### Busbar Basics: Understanding the Fundamentals of Electrical Power

Conclusion: Understanding the basics of busbars is vital for ensuring safe and efficient electrical power distribution. By grasping the core principles of busbar design, material selection, and maintenance,

[Contact Us](#)

### What is a Busbar? Functions, Types & Applications

These components are the silent conductors of power, ensuring efficient energy distribution, reliability, and compact design. Understanding what a



### A Review on Selection of Proper Busbar Arrangement for Typical

ABSTRACT - In this study, a comprehensive review on selection and role of a bus-bar scheme and its possible extension is important initial step in substation design. The aspects which influence this

[Contact Us](#)

### From Breakers to Busbars: Understanding Major

They help to manage power effectively, providing valuable data that can be used to optimize operations. They are analogous to fitness trackers and help users track

[Contact Us](#)



### What is the function of the busbar in a switchgear, and

Busbars are conductors in switchgear that collect, distribute, and transmit electrical energy. They connect the power source (such as the output terminal of a

[Contact Us](#)



### Switchboard Busbar Guide (2025): Design & Standards -

Busbars are the backbone of a low-voltage switchboard: rigid conductors that collect and distribute current safely between incoming devices and outgoing feeders.

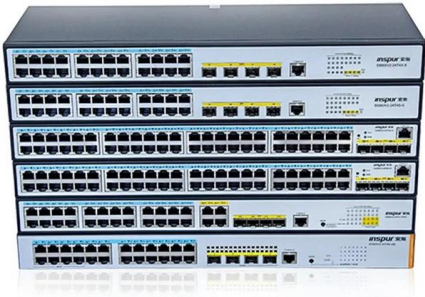
[Contact Us](#)



### Busbar Power Distribution Explained: Benefits, Types,

Discover the benefits, types, and applications of busbar power distribution systems. Learn why busbars offer efficient, safe, and space-saving

[Contact Us](#)



### Types of Busbars & Schemes - Explained with Applications

Table of Contents A busbar is a metallic conductor that serves as a central hub for multiple electrical connections. It can be solid, hollow, or flexible,

[Contact Us](#)



**MPO-MPO** Low Smoke Halogen Free Sheath  
Multimode 10 Gigabit 24 pole OM3  
Insertion loss <0.35dB Return loss >50dB

### Busbar

In electric power distribution, a busbar (also bus bar) is a metallic strip or bar, typically housed inside switchgear, panel boards, and busway enclosures for

[Contact Us](#)





## How Power Is Routed in a Busbar Distribution Architecture

Conclusion Busbar distribution architecture represents a sophisticated approach to managing electrical power distribution. Its design and operation provide significant benefits in terms

[Contact Us](#)



## Ultimate Guide to Busbar System

What is Busbar System? The Busbar System is a one-of-a-kind method of electricity delivery. It is made out of rectangular copper busbars

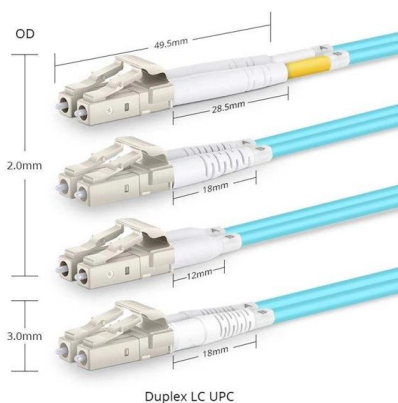
[Contact Us](#)



## What is the function of a bus bar?

A 12V busbar consolidates multiple 12-volt power or ground connections neatly. It provides a secure, central point for distributing power or

[Contact Us](#)



## Electrical Busbars: Function, Types, Design & Selection

Electrical busbars are solid conductors used to carry and distribute high current in switchgear, panels, substations, and power systems. This guide

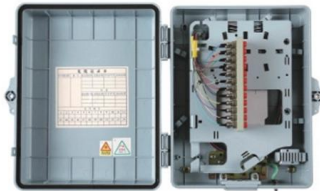
[Contact Us](#)



## **An In-Depth Look at Busbars: Understanding the Electrical Power**

A busbar system is critical in efficiently delivering electrical power to various loads in an electrical distribution system.

[Contact Us](#)



## **Understanding Busbars: Basic Knowledge and**

What is a Busbar? A busbar is a metallic strip or bar that conducts electricity within a switchboard, distribution board, substation, or other electrical apparatus. Its main

[Contact Us](#)

## **What is the function of the busbar in a switchgear, and**

Generally, refer to the busbar current - carrying capacity table and make corrections considering factors such as ambient temperature and installation method. For

[Contact Us](#)



## **Busbars 101: A Comprehensive Guide**

Busbars are essential components in electrical power systems, designed to distribute power efficiently within switchgear, panel boards, and distribution boards. Made from copper or aluminum, they serve

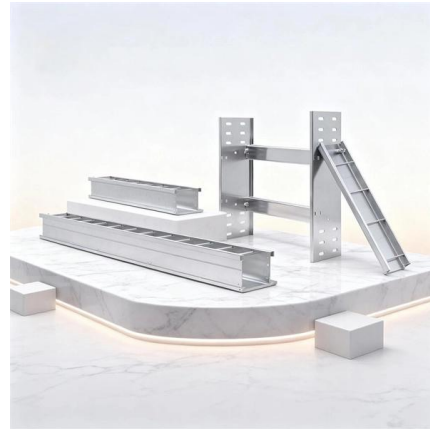
[Contact Us](#)



## Busbar Protection Scheme Explained

What is Busbar Protection? Busbar protection is a protection scheme meant to protect the busbar from electrical fault. Various feeders are connected to

[Contact Us](#)



## "Busbar Systems"

1. Description Three-phase power with currents of up to 5 Amps per phase can be carried, measured and switched by means of the double busbar model. Also present on the board is a branch/

[Contact Us](#)



## What is the function of a bus bar?

Cluttered panels causing headaches? Busbars offer a clean, efficient way to manage power distribution, simplifying complex wiring jobs and boosting

[Contact Us](#)



## Busbar Electrical System Explained: Types, Applications

Discover how a busbar electrical system works, including busbar types, applications, and key design factors. Learn why electric busbars are

[Contact Us](#)





## What Is a Bus Bar in Electrical Engineering? Full Guide

We'll explore the function, types, materials, advantages, applications, and design considerations of bus bars. Whether you're a student, an electrical engineer, or

[Contact Us](#)



## Electrical Busbars: Function, Types, Design & Selection

A busbar works by collecting electrical power at one point and distributing it efficiently to multiple outgoing circuits or devices. Instead of routing

[Contact Us](#)

## Bus Bar : Different Types, Advantages & Disadvantages

The single type is used in small substations where the process of the continuous power supply is not required. An additional type is used in large substations to

[Contact Us](#)



## Bus Bar Arrangement in Power Station:

1. Single Bus-bar System: The single bus-bar system has the simplest design and is used for power stations. It is also used in small outdoor stations having relatively

[Contact Us](#)



## Contact Us

---

For datasheets, pricing, or custom fiber access solutions, please visit:  
<https://frindel.es>