

Function of the ground wire in the distribution box





Overview

Every distribution box connects to a ground wire, which provides a safe path for stray electrical currents to flow into the earth instead of through circuits or appliances. The article discusses the importance and purpose of grounding in utility power transmission and distribution systems, focusing on how grounding helps mitigate issues like lightning strikes, line surges, high-voltage crossovers, and ground faults. 26 mm² (10 AWG) ground wire must be used, and in all other markets a 6 mm² must be used. This helps to reduce the potential difference that exists between conductive parts and the earth.



Function of the ground wire in the distribution box



What Is a Distribution Box?

If you're going to buy a distribution box, there are several things you should look for. You should choose a distribution box that's made of a durable

[Contact Us](#)

What is an Electrical Distribution Box? A

Every distribution box connects to a ground wire, which provides a safe path for stray electrical currents to flow into the earth instead of through

[Contact Us](#)



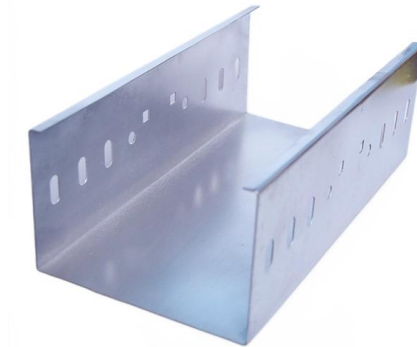
Understanding Circuit Breaker Wiring Configurations in

Correct wiring methods for circuit breakers within distribution boxes are fundamental to ensuring electrical safety and compliance with established codes.

[Contact Us](#)

Where Does the Neutral Wire Go in a Breaker Box?

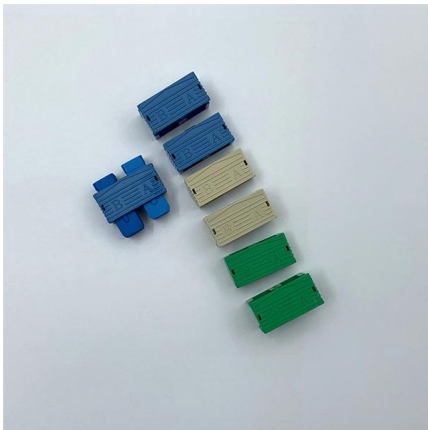
Where Does the Neutral Wire in Breaker Box Go
The neutral or white wire is usually connected to the breaker box's neutral bus bar. At the same time,



Ground Wire: What Exactly Does a Ground Wire Do?

How to Add a Ground Wire to an Outlet Adding a ground wire to an outlet is a potentially hazardous task and should be done by a trained electrician. It typically involves: Running a new

[Contact Us](#)



Should a Breaker Box Wire Neutral or Ground?

Master the fundamental safety difference between neutral and ground wires and the strict rules governing where they must connect or separate.

[Contact Us](#)



The Importance of Ground Wire in Your Breaker Box:

Learn about the important role of the ground wire in a breaker box for electrical safety and protection against electrical shocks and fires.

[Contact Us](#)





HOUSE :: ELECTRICITY :: DISTRIBUTION PANEL ::

distribution panel Set of devices forming the junction of the public electricity grid and the electric circuits of a dwelling.

[Contact Us](#)



DISTRIBUTION BOX

Each DISTRIBUTION BOX and controller must be grounded. On the US market, a 5.26 mm² (10 AWG) ground wire must be used, and in all other markets a 6 mm² must be used.

[Contact Us](#)

The Importance of Ground Wires in the Breaker Box: A

In summary, the ground wire in a breaker box is a critical component of the electrical system that serves to protect against electrical faults, stabilize the system, and

[Contact Us](#)



Purpose of Grounding the Utility Power Distribution

The article discusses the importance and purpose of grounding in utility power transmission and distribution systems, focusing on how grounding

[Contact Us](#)



Correct Connection Method Of Grounding Wire Of

Generally, copper core wire is selected as the ground wire and connected to the PE wiring bar. When connecting, it is necessary to strip the wire

[Contact Us](#)



Grounding system construction: key points for grounding distribution

Everything looks perfect until the moment of truth arrives. That's why today we'll break down the life-or-death details of grounding distribution boxes and cable shielding layers using plain

[Contact Us](#)

What Is a Ground Wire & How It Works , TRADESAFE

What is a ground wire? Discover how it works, why it's essential for safety, and how proper grounding protects against electric current risks.

[Contact Us](#)



Grounding Practices in Power Distribution Systems

It is absolutely necessary to implement efficient grounding in distribution systems in order to guarantee the safety, dependability, and performance of the electrical

[Contact Us](#)



The Importance of Ground Wire in Your



Breaker Box:

Grounding conductors, which are metal wires or bars that connect the ground bus bar in the breaker box to the grounding electrodes. In addition to providing a safe

[Contact Us](#)



Distribution Box Guide: Types, Components & Solutions

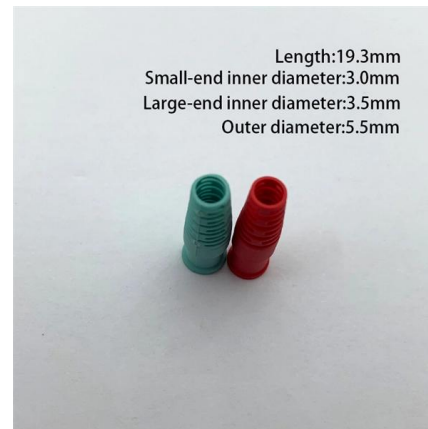
Understand distribution boxes (DB boxes) in 5 minutes. Learn about types, components, functions, and uses. Find the perfect DB box for your needs.

[Contact Us](#)

How to determine the size, installation method and

(1) Wiring method of distribution box 1)
Generally, the incoming line of power distribution box adopts five wire system, that is, a, B and C three-way phase line

[Contact Us](#)



Ground Wire: What Exactly Does a Ground Wire Do?

What is a Ground Wire? The ground wire serves as a secure route for electrical currents in case of a short circuit. If a short circuit occurs, the ground wire will trigger the circuit breaker or fuse,

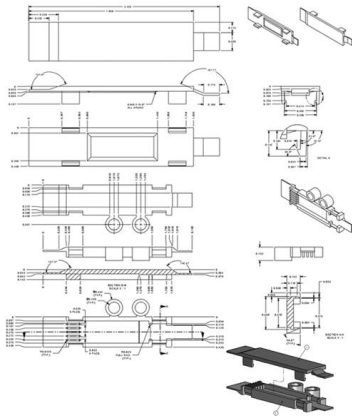
[Contact Us](#)



What Is an Electrical Distribution Box? A Complete Guide

An electrical distribution box is a centralized unit responsible for distributing electrical power across multiple circuits within various

[Contact Us](#)



Size determination, installation method and wiring mode

The distribution box is the central hub of the home circuit and the general control of our daily power consumption. It is an indispensable electrical equipment. If there

[Contact Us](#)

How Does a Power Distribution Box Work

Learn how a power distribution box works step by step--from incoming power to circuit protection and smart monitoring--for safe, efficient electricity delivery.

[Contact Us](#)



Distribution System Grounding , part of Electric Power and Energy

Good system grounding provides the path for normal load and fault currents while maintaining load and controls temporary overvoltages. Good equipment grounding ensures personnel safety.

[Contact Us](#)



Contact Us

For datasheets, pricing, or custom fiber access solutions, please visit:
<https://frindel.es>