

Function of Industrial Electrical Distribution Boxes





Overview

Distribution Box: Handles main supply voltage (220V-690V) with current ranging from tens to hundreds of amps. Control Box: Usually tailored to specific machines, handling low to medium voltages (24V DC to 400V AC).
What is a Distribution Box?

A distribution box, or DB box, is a circuit breaker enclosure. It functions as the central hub that distributes electrical power from the main supply line to various branch circuits within residential, commercial, and industrial settings.



Function of Industrial Electrical Distribution Boxes



Understanding Different Types of Power Box for

Main distribution power boxes, often called breaker panels or main electrical panels, serve as the central hub for power distribution in industrial

[Contact Us](#)

The Ultimate Guide to Distribution Box Types

Discover the key types of distribution boxes with NUOMAK's comprehensive guide. Learn about Main Distribution Boards (MDB), Consumer Units, Transfer

[Contact Us](#)



What Is an Electrical Distribution Box? A Complete Guide

An electrical distribution box is a centralized unit responsible for distributing electrical power across multiple circuits within various

[Contact Us](#)



Understanding Distribution Boxes: A Comprehensive Guide

A distribution box, also known as a power distribution box or electrical distribution box, is used to distribute electrical power safely to multiple



- ✓ TELECOM CABINET
- ✓ BRAND NEW ORIGINAL
- ✓ HIGH-EFFICIENCY



Ultimate Guide To Distribution Boxes Db Boxes Types

Supports future expansion and system upgrades
From residential buildings to industrial plants, DB Boxes play a vital role in modern electrical infrastructure.

[Contact Us](#)

The Importance of Distribution Boxes in Electrical Systems

Learn more about how distribution boxes play a critical role in the safe and efficient operation of electrical systems.

[Contact Us](#)



How Does a Power Distribution Box Work: A Guide

Every industrial or commercial facility depends on a reliable and well-regulated electrical system. At the heart of this network lies a power distribution

[Contact Us](#)



Distribution Box vs Control Box vs Junction Box: Key

Learn the differences between distribution boxes, control boxes, and junction boxes. Discover their functions, applications, and how E-abel provides

[Contact Us](#)



Understanding Electrical Distribution Boxes: Components and

This guide provides a comprehensive look into electrical distribution boxes, examining their key components, functions, and why correct selection and installation are critical for both

[Contact Us](#)

Distribution Boards

Distribution boards, often referred to as electrical panels or breaker boxes, serve as the nerve center of any electrical system. Here we explore the crucial parts of a distribution board and gain insights into

[Contact Us](#)



Distribution Box vs Control Box vs Junction Box: Key Differences and

What Is a Distribution Box? A distribution box, also known as a distribution board or panel, is the central unit that distributes incoming electrical power to various circuits. The primary role of a

[Contact Us](#)



Electrical Control Panels & Distribution Boxes: Sizes,

Introduction Electrical control panels and distribution boxes are the backbone of modern electrical systems. From powering homes and industrial

[Contact Us](#)



Understanding Different Types of Power Box for

In industrial settings, power distribution is vital for ensuring that machinery, lighting, and other systems function smoothly. Power boxes, also

[Contact Us](#)

Understanding Distribution Boxes: A Comprehensive Guide

A distribution box is a vital piece of equipment that ensures the effective and safe distribution of electrical power in various parts within a building

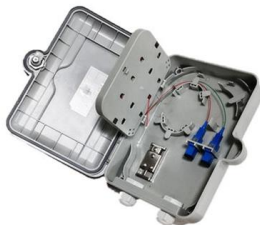
[Contact Us](#)



Ultimate Guide To Distribution Boxes Db Boxes Types

This ultimate guide explains what a distribution box does, its internal components, common types, real-world applications, and how to select the right DB Box for

[Contact Us](#)





Distribution Box Guide: Types, Components & Solutions

Understand distribution boxes (DB boxes) in 5 minutes. Learn about types, components, functions, and uses. Find the perfect DB box for your needs.

[Contact Us](#)



What Is an Electrical Distribution Box and Why Is It

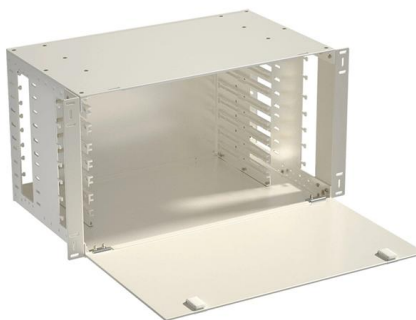
An electrical distribution box distributes power safely, prevents overloads, and protects circuits, ensuring efficient and reliable electrical systems.

[Contact Us](#)

What is the Function of a Distribution Box in Electrical Systems

A distribution box spreads power safely to different circuits. It is the main control center for electricity, keeping devices safe from overloads and short circuits.

[Contact Us](#)



Comprehensive Understanding of Distribution Box - Expert in Electrical

A distribution box helps manage electricity in homes or workplaces. It makes sure power flows safely and efficiently to devices. Let's look at its main jobs. Power distribution and circuit management The

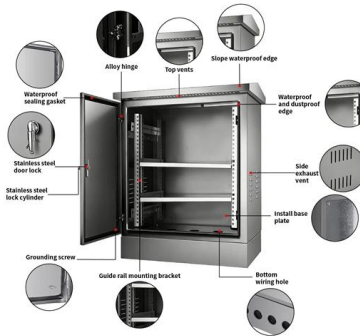
[Contact Us](#)



Distribution Box: Comprehensive Guide on Types, Safety & Technology

Explore the essential functions, types, safety features, and technological advances of distribution boxes for efficient electrical power distribution.

[Contact Us](#)



Understanding Distribution Boxes: A Comprehensive Guide

Understanding its significance, this article covers what a distribution box is, how it functions, its structure, the various types available, and how it

[Contact Us](#)

Distribution Boxes Types - The Complete Guide

The power distribution boxes deliver electricity from the main electrical main to other circuits. Several distribution boxes are designed for specific use in

[Contact Us](#)



Power Distribution Box Essentials: Functions, Types

A power distribution box electrical captures electricity from the primary power supply and allocates it securely to different electrical circuits in a building

[Contact Us](#)





What is an Electrical Distribution Box? A

Industrial: In industrial environments, distribution boxes take on an even more significant role, dealing with high voltage and substantial electrical

[Contact Us](#)



Distribution Box Guide: Types, Components & Solutions

It acts as a protective enclosure that houses several key components, such as circuit breakers, fuses, and bus bars. These components work together

[Contact Us](#)

What Is a Distribution Box?

Distribution boxes are commonly used in residential and commercial electrical systems. Also known as a distribution board, it's responsible for

[Contact Us](#)



Contact Us

For datasheets, pricing, or custom fiber access solutions, please visit:
<https://frindel.es>