

Function of HBA Fibre Channel Card





Overview

HBAs are designed to support specific protocols such as Fibre Channel (FC), iSCSI, or SAS. They handle the encoding, decoding, and error checking required by these protocols, ensuring reliable data transfer. It is a circuit board or integrated circuit adapter that provides input/output (I/O) processing and physical connection between the server and the storage device.

Enterprise organizations rely on their Fibre Channel SAN for fast, reliable access to critical applications and data. According to this definition, like a video card is connected to the video bus and memory, the network card is connected to the network bus and memory, SCSI-FC card is connected to the SCSI or FC bus and memory.



Function of HBA Fibre Channel Card



Fibre Channel (FC) interface

An HBA is a dedicated hardware component that connects a server to a Fibre Channel storage network. It provides the necessary physical and logical interface for communication.

[Contact Us](#)

The Simple Guide to Host Bus Adapter (HBA)

Most of time, a HBA works as an expansion card that plugs into the bus of a server's motherboard. The main purpose of HBA is to realize the data

[Contact Us](#)



Real-World Requirements from Fibre Channel HBAs

To keep up with growing business demands and exponential data growth, IT administrators deploy the latest servers, solid-state storage SSD and NVMe devices, and storage network components to meet

[Contact Us](#)



How Much Do You Understand HBAs?

FC-HBA adapters and iSCSI HBAs are available for HBA cards, whereas other HBA cards will be made available in the future. Adapter (adapters) and

[Contact Us](#)



Host bus adapter (HBA) architecture explained

Improved server performance. HBAs are most commonly used in Fibre Channel (FC) SAN environments and are also used for connecting SCSI

[Contact Us](#)



Emulex Fibre Channel HBA

Fibre Channel is purpose-built for storage networks, meeting the requirements for high availability, scalability, predictable performance, and low latency. The Emulex® Gen 7 Fibre Channel Host Bus

[Contact Us](#)



How do i set up a Fibre Channel HBA adapter as a network device?

How do i use an HBA adapter as a network device? I want to connect one HBA adapter on one machine to the HBA adapter on another machine and use them like a traditional network device

[Contact Us](#)





Difference Between HBA, NIC and CNA

HBA stands for Host Bus Adapter, which is a board or integrated circuit adapter that provides the physical connection and input/output (I/O)

[Contact Us](#)



4 Port Fibre Channel Host Bus Adapter (HBA) design

Fibre channel is an industry standard high performance interface designed to bring speed and flexibility to multiple networked storage systems. It is also hot pluggable which allows the user to

[Contact Us](#)

IBM FRU 43W7510 LightPulse LPe11000 4GB PCI-E HBA Fibre Channel Card

IBM Network Cards for PCI, IBM Network Cards for Mini PCI, IBM Fibre Channel Internal Hard Disk Drives, IBM Network Cards for PCI Express x4, IBM Fibre Channel Hard Drives (HDD, SSD & NAS),

[Contact Us](#)



Difference Between HBA, NIC and CNA

The three different types of boards, HBA, NIC and CNA, all provide data processing and physical connectivity for network devices. However, they

[Contact Us](#)

The difference between fiber network card

FC network card: also commonly called fiber channel network card, stand for Fiber Channel HBA. The transmission protocol is a Fibre Channel

[Contact Us](#)



Small Form-factor Pluggable

Small Form-factor Pluggable connected to a pair of fiber-optic cables Small Form-factor Pluggable (SFP) is a compact, hot-pluggable network interface module

[Contact Us](#)

What is the difference between an HBA and a NIC

What is the difference between an HBA and a NIC HBA's and NIC's both connect your workstation to a switch or storage, so what is the difference?

[Contact Us](#)



HBA (Host Bus Adapter)

A fibre channel interface card is also referred to as a host bus adapter. These devices are used for a variety of systems to include computer architectures,

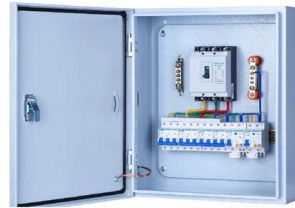
[Contact Us](#)



Setting Fibre Channel HBAs

Ensure that the firmware level on each HBA is the same. Set the timeout value for detecting a failover. To ensure optimal performance, do not change the default value. ESXi supports 32 Gbps end-to-end

[Contact Us](#)



What is an HBA card

Because the high-speed characteristics of Fibre Channel are generally not supported by server motherboards, a special host bus adapter card is required. After the

[Contact Us](#)

What is a host bus adapter (HBA)? An introduction

HBA cards usually plug in to the PCIe slots of host computers. A Fibre Channel HBA enables connectivity and data transfer between devices in an FC

[Contact Us](#)



A Comprehensive Guide to HBA Cards for Data Storage Solutions

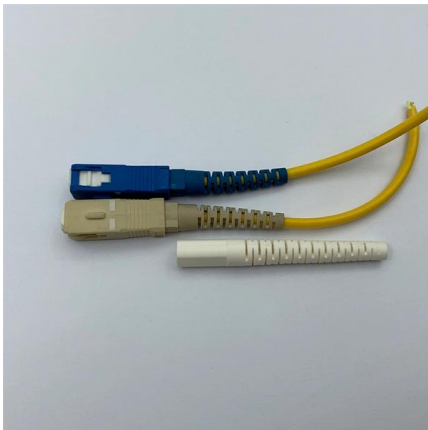
Fibre Channel HBAs are a specialized type of host bus adapter designed for high-speed data transfer in storage area networks (SANs). They connect servers to Fibre Channel switches and

[Contact Us](#)



Instead, devices with Parallel SCSI or Fibre Channel interfaces are bridged by using iSCSI target software, external bridges, or controllers internal to the device enclosure. Alternatively, it is possible

[Contact Us](#)



How to check Fibre Channel HBAs in Linux?

Fibre Channel (FC) Host Bus Adapters (HBA) are interface cards that link the host system to a fibre channel network or devices. QLogic and Emulex

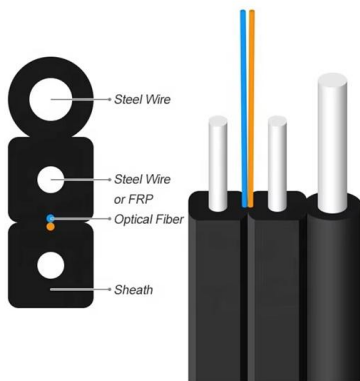
[Contact Us](#)

Qlogic QLE2692-F Dual-port 16G FC HBA Fibre Channel card

Find many great new & used options and get the best deals for Qlogic QLE2692-F Dual-port 16G FC HBA Fibre Channel card at the best online prices at eBay! Free shipping for many products!



[Contact Us](#)



Details of the differences between fiber-optic network

In fact, we often say that the fiber-optic network card refers to the fiber channel network HBA card. Due to the different transmission protocols, the card

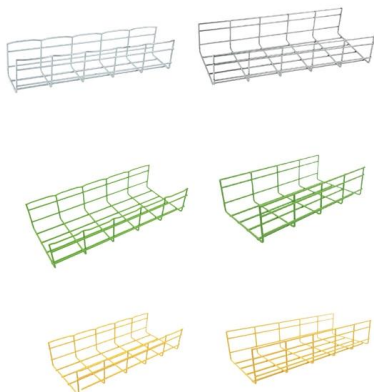
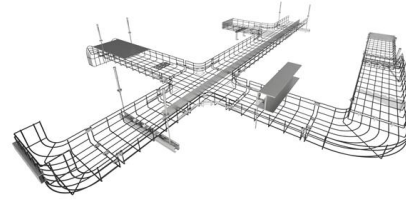
[Contact Us](#)



HBA detailed explanation, how much you know?

This kind of SCSI card realizes the function is the host Bus adapter card function. If the disk supports only Fibre Channel protocols, then the Fibre

[Contact Us](#)



How HBA Works: Role, Functions, and Benefits Explained

Unlike a standard network interface card (NIC), which primarily handles network traffic, an HBA is optimized for high-speed storage

[Contact Us](#)

Contact Us

For datasheets, pricing, or custom fiber access solutions, please visit:
<https://frindel.es>