

Formula for a 30-degree cable tray elbow





Overview

How to calculate 30 degree offset?

For a 30-degree offset, the distance between bends (hypotenuse) is calculated as $\text{Offset Distance} \times \text{Cosecant}(30^\circ)$, which equals $\text{Offset} \times 2$. Easy step to making cable tray offset bend 30 degrees at a distance of 150 mm +150 mm = 300mm. is an Edmonton based company dedicated to excellence in the manufacturing of electrical ladder tray. By applying the following formula you can quickly find the size of the cut-out section that you need to cut out of. Hubbell's NEXTFRAME® Ladder Tray is the effective and widely used cable runway that supports and delivers bundles of cable between cabinets, racks, and closets, along walls, and suspended from ceilings.



Formula for a 30-degree cable tray elbow



Cable Tray Offset Formula ! 45°/30°/22.5 Degree

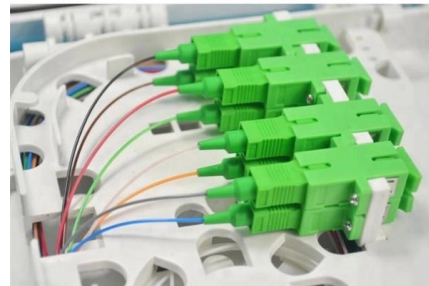
Rules for creating cable tray offsets. 45°/30°/22° degrees. Example To create an offset of 45 degrees at a distance of 200 mm, $200 \times 1.414 = 281$ mm 45 Degree c

[Contact Us](#)

Elbow Center Calculation Guide

The formula is: $\text{elbow center} = \tan(\text{angle}/2) \times 38.1 \times \text{diameter}$. The table lists the tan values for commonly used elbow angles from 30 to 90 degrees to simplify the

[Contact Us](#)



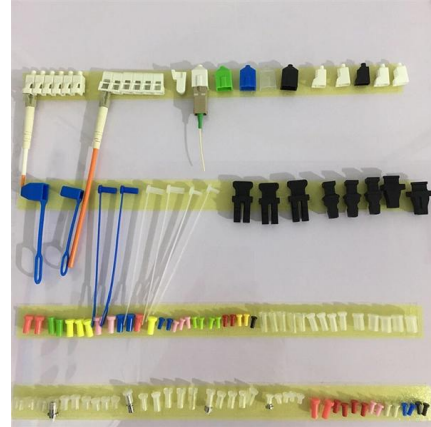
Cable Tray Bend and Offset Formulas , PDF

The document discusses Metstrut cable tray systems, including their configuration, materials, dimensions, and compliance with industry standards. Key points: -

[Contact Us](#)

Cable Tray 30 Degree Offset Formula ! 400mm to 1000 mm Cable

Today this Video I will share 30 Degree Offset Bend Formula. Formula Destination $215 + 215$ Travel = 430 mm Travel. for 100 mm cable tray 26 by 26 V Cutti



How to Calculate Size of Cut to Set Cable Tray

By applying the following formula you can quickly find the size of the cut-out section that you need to cut out of the side of the cable tray, or gutter-type

[Contact Us](#)



30° Vertical Elbow , Cable Tray Systems , PUPCO

Discover our 30° Vertical Elbow for cable tray systems. Seamlessly transition between sections and fittings, reducing tray width. Contact us today!

[Contact Us](#)



Fiberglass cable tray 90 degree vertical inside bend assembly submittal

Fiberglass cable tray 90-degree vertical inside bend assembly for efficient cable management in various industrial applications.

[Contact Us](#)



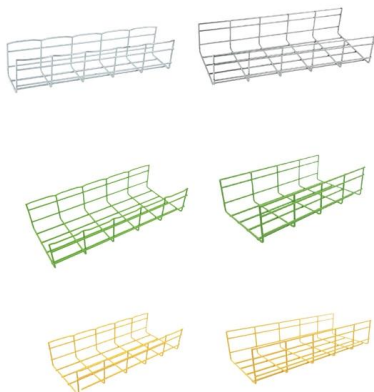
Method for Fabricating 90-Degree Bend



Elbows for Cable Tray

Making bent elbows for cable trays according to the formulas provided in the diagram is for reference only. The data is directly related to the width or height of the cable tray, and calculations can be

[Contact Us](#)



TIPS HOW TO BEND CABLE TRAY USING X.80 FORMULA ANY

How to bend a cable tray bridge type o HOW TO BEND A CABLE TRAY BRIDGE TYPE/TAGALOG How to bend 11.25 degree of cable tray using x0.80 formula o HOW TO BEND 11.25 DEGREE OF CABLE

[Contact Us](#)

Make a 90 Bend in Electrical Cable Tray

The Easy Guide to How to make a 90 electrical cable tray bend to measurement of your choice. Great if you are new or just forgot how to do it, this easy

[Contact Us](#)



TIPS HOW TO BEND CABLE TRAY USING X.80 FORMULA ANY SIZES OF CABLE TRAY

Cable Tray Offset Formula ! 45°/30°/22.5 Degree
???? ???? ????? ?????????? 45°/30°/22 ?????? ??????

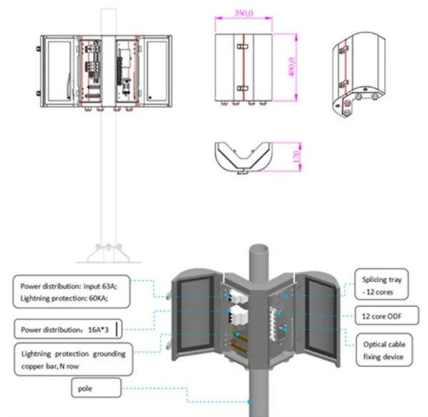
[Contact Us](#)



90° Vertical Elbow , Cable Tray Systems , PUPCO

Discover our 90° Vertical Elbow for cable tray systems. Contact us today for availabilities and receive a quote. Fast shipping guaranteed

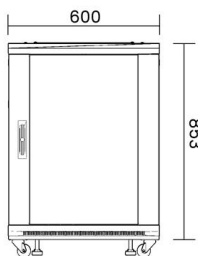
[Contact Us](#)



CABLE TRAY SYSTEMS GUIDE

To incorporate this in the tray design the following formula can be used to convert the concentrated static load in pounds to an equivalent uniform load (W) in pounds per foot.

[Contact Us](#)



Easy step to make 45 degree offset cable tray/Pipe and Air duct

Cable Tray Offset Formula ! 45°/30°/22.5 Degree
 ??? ???? ????? ????????? 45°/30°/22 ?????? ??????

[Contact Us](#)



Cable Bending Radius in Cable Tray , Information by Electrical

As there will only be two cables in this 12" wide tray, so I thought we can do it without 90° fitting. But I am not able to figure out how to calculate the radius R as shown on the attached sketch.

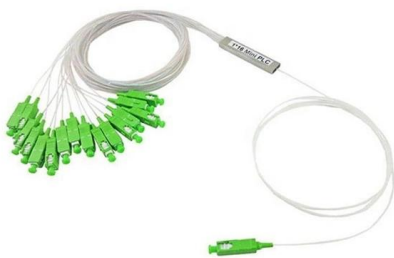
[Contact Us](#)



cable tray system

A cable tray system is an assembly of metallic cable tray sections and accessories, that forms a rigid structural system to support cables.

[Contact Us](#)



Trunking Cutting Techniques Guide , PDF

Handouts Trunking and Tray Work - Free download as PDF File (.pdf), Text File (.txt) or read online for free. The document provides instructions for forming various

[Contact Us](#)

Cable Tray Design and Components Guide

This document provides information about cable trays and accessories, including straight cable trays, perforated trays, returned edge and flange types, and bent

[Contact Us](#)



Easy Step to Make Cable tray 30 Degree Offset Formula

Easy step to making cable tray offset bend 30 degrees at a distance of 150 mm +150 mm = 300mm. 30 degree cutting Formula 50 mm cable tray $30 \times 0.44 = 13$ mm. (13mm by 13mm) cutting.

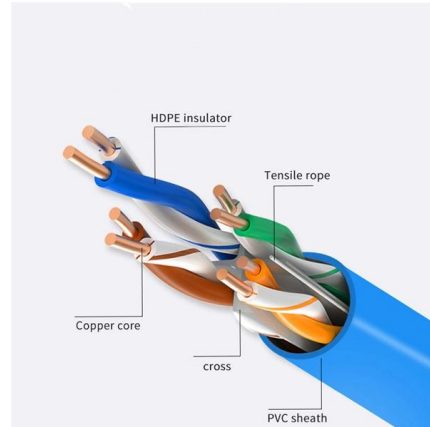
[Contact Us](#)



How to make a 0-90° vertical angle for cable trays?

Elbow joint RVS is pushed inside the cable tray and attached with the included screw set. Elbow joint RVS can be used to change a cable tray's horizontal orientation

[Contact Us](#)



Easy Step to Make Cable tray 30 Degree Offset Formula

Easy step to making cable tray offset bend 30 degrees at a distance of $150\text{ mm} + 150\text{ mm} = 300\text{mm}$. more

[Contact Us](#)

TECHNICAL AND SIZING DATA

When vertically stacking ladder trays always maintain adequate clearance above each tray run to allow for the installation of the cable and start with the narrowest (lightest) tray on top and work downwards

[Contact Us](#)



Vertical Outside 30 Elbow , Ladder Trays , Cable Tray and Reels

The aluminum I-beam design of ITray is perfect for industrial installations with large diameter cables in long span situations, minimizing total tray width and creating a smooth transition between straight

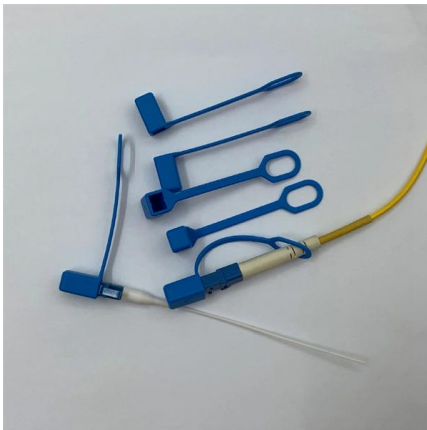
[Contact Us](#)



Method for Fabricating 90-Degree Bend Elbows for Cable Tray

Take a 90-degree cable tray bend elbow as an example, and apply the same principles for 45-degree bends accordingly. The length of the bottom side (bottom diagonal) after bending the cable tray

[Contact Us](#)



Cable Tray Bend Calculator

For a 30-degree offset, the distance between bends (hypotenuse) is calculated as $\text{Offset Distance} \times \text{Cosecant}(30^\circ)$, which equals $\text{Offset} \times 2$. The total length of tray used increases slightly due to the

[Contact Us](#)

Cable Tray Bend Formulas and Types , PDF

Cable Tray Ladder SC/SLW Type NOBI Series - Free download as PDF File (.pdf), Text File (.txt) or read online for free. This document provides information on

[Contact Us](#)



Contact Us

For datasheets, pricing, or custom fiber access solutions, please visit:
<https://frindel.es>