

Fixing of Vertical Trapezoidal Cable Tray



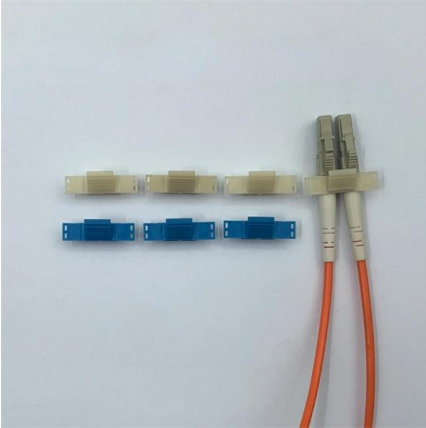


Overview

Thread hex nut 25 mm (1") to 50 mm (2") above location of the tray bottom. This publication is intended as a practical guide for the proper and safe* installation of cable ladder systems, cable tray systems, channel support systems and associated supports. With our many years of experience, we are one of the leading manufacturers in this field. Cable trays are a popular choice in cable management systems because of their strength and ability to handle large cables. When it comes to fixing and mounting cable trays, these methods should be considered: Suspended Mounting with Rods: This method uses threaded rods to suspend the cable tray.



Fixing of Vertical Trapezoidal Cable Tray



INSTALLATION GUIDE

Vertical cable tray elbows at the top of runs should be supported at each end. At the bottom of runs, they should be supported at the top of the elbow and within 610 mm (24") of the lower extremity of the

[Contact Us](#)

Cable Tray / Ladder Tray INSTALLATION PowerTray

General Installation Guidelines: For more information refer to the latest NEMA standards and local building codes. Trough tray field support and frequency depends on the weight and construction

[Contact Us](#)



Method Statement installation of Cable Trays and Ladders

This method statement covers the site installation of the cable tray & ladders and the requirements of checks to be carried out.

[Contact Us](#)



Best Practice Guide to Cable Ladder and Cable Tray Systems

This guide covers cable ladder systems, cable tray systems, channel support systems and associated supports intended for the support and accommodation of cables and possibly other electrical



Best Fixing and Mounting Options for Cable Trays , CMW

Discover the best fixing and mounting options for cable trays and wire mesh basket trays. CMW shares tips for efficient cable management.

[Contact Us](#)



CABLE TRAY SYSTEMS GUIDE

It is designed for mechanical support and strain relief in long runs of cable and creates a smooth gradual bend for cable. Rail and stringer material is 16 ga steel tubing.

[Contact Us](#)



Decoding Cable Tray Support Structures: Tips and Insights

Discover efficient cable tray support structures for optimal cable management. Learn about hanger, wall-mounted, and Unistrut systems for safer

[Contact Us](#)





Guide to cable support systems

Widths of 8 and 15 millimetres enable flexible adjustment to different cable trays, cable ladders and cable volumes. With the help of the matching SBV tightening strap locks and 576 spring chuck, the

[Contact Us](#)



Cable Tray Trunking & Ladder Installation Method for

Resources For Electrical & Electronic Engineers
Cable Tray Trunking & Ladder Installation Method for Projects
The purpose of this article is to define the

[Contact Us](#)

How are the cables fixed inside the vertical cable tray?

2. Hook fixing method: Install hooks on the inner wall of the bridge and hang the cables on the hooks. This method is suitable for large cables, but requires additional processing of hooks. 3. Ladder fixing

[Contact Us](#)



Cable Tray Installation Procedure Guide

It describes inspecting and storing cable trays upon receipt, installing trays flat or vertically, fixing trays to structures, designing trays to carry loads, providing

[Contact Us](#)





What is a Vertical Cable Tray?

What is a vertical cable tray? This guide explains its types (ladder, solid-bottom), benefits for safety & organization, and key applications in data

[Contact Us](#)



How are the cables fixed inside the vertical cable tray?

Ladder fixing method: Arrange the cables along a trapezoidal track, and then fix them on the track with binding tape. This method is suitable for large cables, but requires additional processing of

[Contact Us](#)

Method Statement for Installation of Cable Tray or Trunking

On completion of cable tray/ ladder installation including fittings, inspect exposed finish. Remove burrs & construction debris and repair damages finishes

[Contact Us](#)



A Guide to Installing and Supporting Electrical Cable Trays

This guide covers the critical steps, from selecting the right electrical cable tray and performing accurate cable fill calculations to managing a safe cable pull through

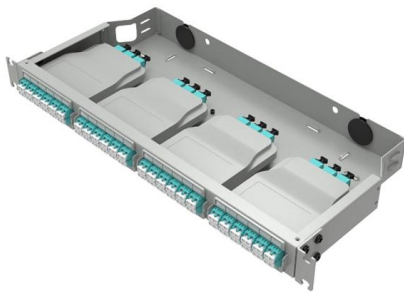
[Contact Us](#)



Cable Tray Technical Guide A practical guide to product selection and

Cable Tray Technical Guide A practical guide to product selection and installation This guide for engineers and installers has been developed by ABB as a practical reference regarding cable tray

[Contact Us](#)



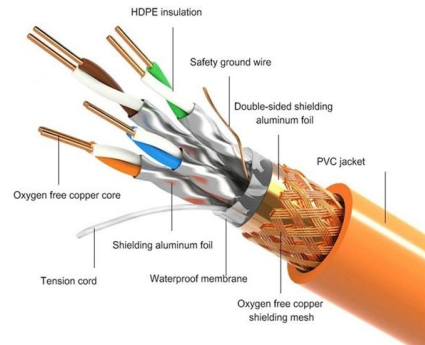
Guide to cable support systems

Universal systems for cable support structures are used for small loads. The systems are suspended from the ceiling with threaded rods, stand-off brackets allow raised floor mounting of cable trays,

[Contact Us](#)



PRODUCT DETAILS



Installation Of Cable In Cable Trays: NEC, Safety

Installation of Cable in Cable Trays ensures proper routing, cable management, NEC compliance, grounding, fire safety, and load capacity.

[Contact Us](#)



Cable Tray Technical Guide A practical guide to product selection and

Cable tray is considered to be a system. It must provide continuous support for cables, and the electrical continuity of the cable tray system must be maintained.

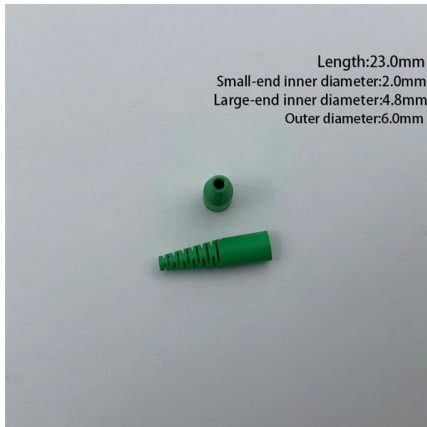
[Contact Us](#)



Best Practice Guide to Cable Ladder and Cable Tray Systems

Wall support brackets (Figures 12) are an effective way of fixing any width of cable ladder or cable tray, running either vertically or horizontally, to a vertical support.

[Contact Us](#)



Fixings

The UV-resistant PVX Minimount provides a multifunctional cable management system for mesh tray on trapezoidal roofs. Compatible mesh tray: 2004054. Material: Nylon PA6GF30, Halogen free, UV

[Contact Us](#)

CABLE TRAY SYSTEMS GUIDE

Cable Tray Systems Guide HUBBELL Hubbell Wiring Device-Kellems and Hubbell Premise Wiring are divisions of Hubbell Incorporated, a U.S. headquartered manufacturer with over 130 years of

[Contact Us](#)



Mounting instructions

Electrically trained specialists charged with installing cable support systems and cable trays. These instructions are based on the standards valid at the time of compilation (12/2023). Please read the

[Contact Us](#)



CABLE TRAY INSTALLATION PROCEDURE

5. Cable tray installation shall preferably be installed flat in buildings or operating structures. Tray shall run as far as possible under flooring and walkways. Only in

[Contact Us](#)



Instrumentation Cable trays Installation in vertical

The article describes a improvement for better life and easy maintenance for instrumentation cable trays for industry. The practices if applied

[Contact Us](#)

Contact Us

For datasheets, pricing, or custom fiber access solutions, please visit:
<https://frindel.es>