

# **Fixing method for lighting distribution box**





## Overview

---

Luminaires should be adequately supported by means such as chain, screws, conduit boxes or enclosures and, in all cases, consideration should be given to the recommendations of the manufacturer of the particular fixing device. The lighting system installation work shall cover the supply and installation of lighting system equipment such as Main lighting distribution boards (MLDBs), lighting distribution boards (LDBs), receptacles, light control switches, ceiling fans, lighting wires, conduits, junction boxes, lighting. This methodology document highlights the technical guidelines for the installation of Electrical Distribution Boards (DBs). 2 steel snap-fit mounting clips make securing the lighting distribution box quick and easy, and ensure compliancy with IET wiring regulation 521. Every flex7 Lighting Distribution Box is supplied with 2 x steel mounting clips, 2. For single row 20, and circuit 24, fter confirming the wires meet the requirements.



## Fixing method for lighting distribution box

---



### Requirements for luminaires and lighting installations , NICEIC

One way to ensure earth continuity of the conduit is maintained is to fix the fittings to the conduit system using appropriately spaced conduit boxes, as shown in Fig 2.

[Contact Us](#)

### Size determination, installation method and wiring mode

The distribution box is the central hub of the home circuit and the general control of our daily power consumption. It is an indispensable electrical equipment. If there

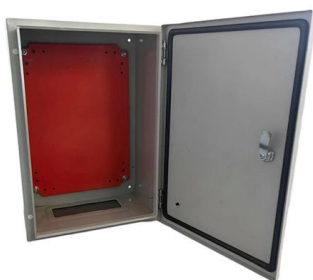
[Contact Us](#)



### Guide to Commercial Installations Distribution Boards & Panelboards

In order to segregate the energy used by different services, such as lighting and power, you can either use two boards which each have separate meters or you might consider using a lighting and power

[Contact Us](#)



### METHOD STATEMENT DISTRIBUTION BOARDS

This Method Statement covers the installation of Distribution Boards. This procedure is to define the method used to ensure that the Distribution Boards have been installed as per the contract



requirement.

[Contact Us](#)



### flex7 Lighting Distribution Boxes

Multiple free of charge fixing options: Every flex7 Lighting Distribution Box is supplied with 2 x steel mounting clips, 2 x M5 machine screws with lock nuts for mounting to trunking, cable tray etc.

[Contact Us](#)



### The installation requirements for the distribution box

Learn how to install a distribution box safely and correctly. Covers wiring, placement, standards, and expert tips for a compliant setup.

[Contact Us](#)



### Electric Panel Installation Method Statement

METHOD STATEMENT FOR Electric panel and distribution box installation and termination - Free download as PDF File (.pdf), Text File (.txt) or

[Contact Us](#)





## Electric Panel Installation Method Statement

METHOD STATEMENT FOR Electric panel and distribution box installation and termination - Free download as PDF File (.pdf), Text File (.txt) or read online for free. This document provides a method

[Contact Us](#)



## High-Quality Electrical Lighting Distribution Boxes Explained

These versatile components are essential for ensuring safe and efficient operation of lighting installations in diverse settings, from street lighting to commercial buildings. In this comprehensive guide, we'll

[Contact Us](#)

## Technical Requirements for Lighting System Installation Work

The work shall include unloading, storing, unpacking, fixing of all equipment, routing and laying of conduits/cables, wiring, termination, testing and commissioning of all the equipment of lighting system.

[Contact Us](#)



## The Best Solution to Install Components Inside The

The trickiest part of installing inner components of a distribution box is that the components' heights are irregular. E-Abel's flexible mounting bracket can

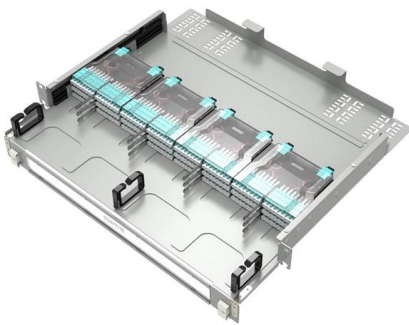
[Contact Us](#)



## Wiring a Lighting Junction Box: A Step-by-Step Guide

Learn how to properly wire a lighting junction box for safe and efficient electrical connections. Step-by-step guide for professional results.

[Contact Us](#)



## Electrical Panel Board Installation Procedure

The installation involves preparing the work space, verifying supplied components, and fixing panelboards per plans, specifications, & manufacturer recommendations.

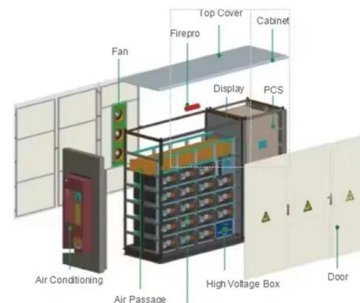
[Contact Us](#)



## QHSE DOCUMENTS-METHOD STATEMENT FOR INSTALLATION OF DISTRIBUTION

1.0. Scope This methodology document highlights the technical guidelines for the installation of Electrical Distribution Boards (DBs).

[Contact Us](#)



## How to Install a Cable Distribution Box Safely and

Reliable cable distribution boxes ensure safe, efficient power management for residential, commercial, and industrial systems. Learn

[Contact Us](#)



## Technical Requirements for Lighting System Installation

The work shall include unloading, storing, unpacking, fixing of all equipment, routing and laying of conduits/cables, wiring, termination, testing and commissioning of

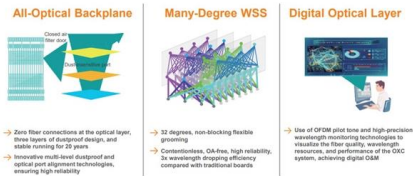
[Contact Us](#)



### Do you know how to fix the distribution box?

Wall Mounting: One of the most common methods is to fasten the distribution box to the wall. This usually involves using expansion bolts or screws to securely mount the cabinet to the wall. Make

[Contact Us](#)



## JXF Power Distribution Box (Cabinet) User Manual

Open-mounted distribution box installation method: Assemble four bolts into the four holes on the corners and tighten them into the expansion pipes to fix the box.

[Contact Us](#)



### QHSE DOCUMENTS-METHOD STATEMENT FOR

1.0. Scope This methodology document highlights the technical guidelines for the installation of Electrical Distribution Boards (DBs).

[Contact Us](#)



## Contact Us

---

For datasheets, pricing, or custom fiber access solutions, please visit:  
<https://frindel.es>