

Fiber optic sensor is lit up with red light





Overview

A VFL is used to detect faults, breaks, or bends in fiber optic cables by emitting a bright red light that is visible even through the fiber's jacket. It's a cost-effective and straightforward tool, making it ideal for quick troubleshooting and maintenance. The red pointer, also called visual fault locating meter or visual fault detector, sends red light to check whether the optical fiber has red light leak to locate the damage point of an optical fiber. Fiber optic troubleshooting is an essential skill for network administrators, technicians, and engineers responsible for maintaining and repairing fiber optic systems. Detection in Narrow Locations The small sensing section and flexible Fiber Unit cable enable a Fiber Sensor to detect.



Fiber optic sensor is lit up with red light



Plastic optical fiber

Plastic optical fiber (POF) or polymer optical fiber is an optical fiber that is made out of polymer. Similar to glass optical fiber, POF transmits light (for illumination or

[Contact Us](#)

Amazon : Fiber Optic Light Source

Optical Fiber Power Meter Komshine KPM-35 with 7 Wavelengths -70~+10dB + Singlemode Multimode Fiber Light Source Komshine KLS-35-MS 850/1300nm+1310/1550nm (Self Calibration) Add to cart

[Contact Us](#)



Pagsabay sa Temperatura ng Switchgear ng HV , GIS Fiber Optic Sensor

Nangunguna sa Field ang Fluorescent Fiber Optic Sensing Bottom line sa harap: Ang fluorescent fiber optic temperature sensing ay ang pinaka maaasahan at technically superior na

[Contact Us](#)

Troubleshooting Fiber

Optical fault finders such as Fluke Networks' Fiber QuickMap quickly and efficiently measure length and identify high loss events and breaks on multimode up to

[Contact Us](#)



FiberLert(TM) Live Fiber Detector

FiberLert is a fiber light detector that senses near infrared light emitted from fiber optic cabling. A continuous red glow at the handle and an

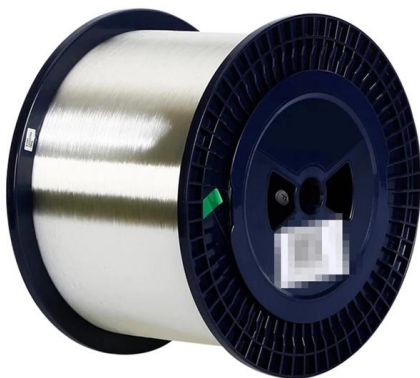
[Contact Us](#)



How to Use a Visual Fault Locator (VFL): A Step-by

A VFL is used to detect faults, breaks, or bends in fiber optic cables by emitting a bright red light that is visible even through the fiber's jacket. It's a cost

[Contact Us](#)



The FOA Reference For Fiber Optics

The fiber optic tracer is a low power visible light fiber optic tracing and troubleshooting tool for multimode optical fiber. It uses a bright incandescent bulb

[Contact Us](#)

Technology of Fiber-Optic Sensors , wenglor



Depending on the specific requirements of the application, wenglor fiber-optic sensors use red, blue, pink or infrared light. Red LEDs (633 nm) offer high process stability, even with very bright or white

[Contact Us](#)



Fiber Optic Issues: Troubleshooting & Prevention Tips

Solve common fiber optic network problems--attenuation, damage, connector issues. Learn troubleshooting steps, tools, and prevention to ensure reliable

[Contact Us](#)

CSM_FiberSensor_TG_E_2_1

Fiber Sensors almost always use LEDs as the light source. The light emitted from LEDs oscillates in the vertical and horizontal directions and is referred to as unpolarized light.

[Contact Us](#)



What the LED lights mean

The tables in this article provide detailed information about the possible appearances of the LED lights on each device, the possible causes of each state, and what you should do. Ensure your Fiber Jack

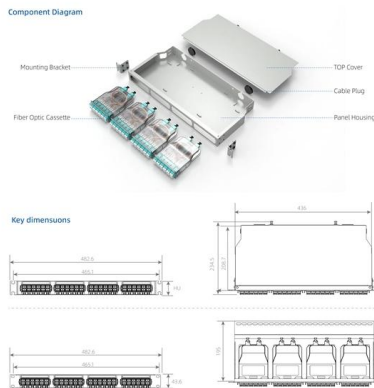
[Contact Us](#)



What to Do When the LOS Light Blinks Red and How to

However, when it blinks red or stays solid red, it signifies a Loss of Signal, a problem preventing your router from communicating with the ISP. Why

[Contact Us](#)



Fiber Optical Red Light Sources

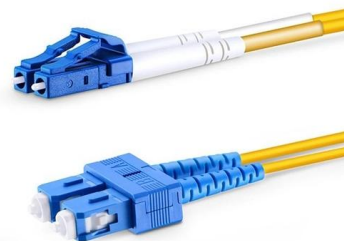
The red light emitted by the fiber tester has a wavelength of approx. 655 nm and

[Contact Us](#)

Fiber-optic sensor

A fiber-optic sensor is a sensor that uses optical fiber either as the sensing element ("intrinsic sensors"), or as a means of relaying signals from a remote sensor to the electronics that process the signals

[Contact Us](#)



Online Bulk Cable Company , CableWholesale

As a premier online bulk cable company, CableWholesale carries a large inventory of computer cables, USB, HDMI, fiber optic, VGA cables, and more. Shop now!

[Contact Us](#)



Visual Fault Identifiers (VFI)

A visual fault identifier or visual fault locator (VFI / VFL) is a visible red laser designed to inject visible light energy into a fiber. Sharp bends, breaks, faulty connectors and other faults will "leak" red light

[Contact Us](#)



See if Fiber is Lit Quickly Fluke FiberLert Review

Fluke Fiberlert 125 Package Features The two primary ways one will use this is to see if light is passing through a fiber optic cable. If it is, you will get a tone and a solid red LED light. Fluke

[Contact Us](#)

Fiber Optical Red Light Sources

General Working Principle The red light of a laser is coupled into the core of an optical fiber in a targeted manner (an LED is usually too weak a source to be

[Contact Us](#)



B3 Optical Fiber Visual Fault Locator (Red Light Pen)

The Optical Fiber Visual Fault Locator (Red Light Pen) utilizes a 650nm semiconductor laser, offering a reliable and stable red light output for fiber fault detection in both single-mode and

[Contact Us](#)

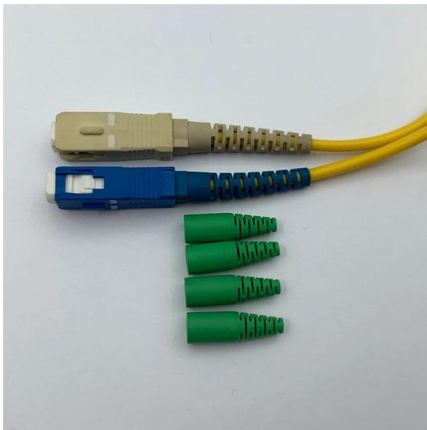




Checking Whether the Optical Fiber Is Damaged Using the Red Pointer

Check whether the optical fiber has red light leak. If the red light leaks, the fiber is damaged. Replace or re-splice the optical fiber that has red light leak. Replace the optical fiber if its

[Contact Us](#)



Space Station Research Explorer on NASA.gov

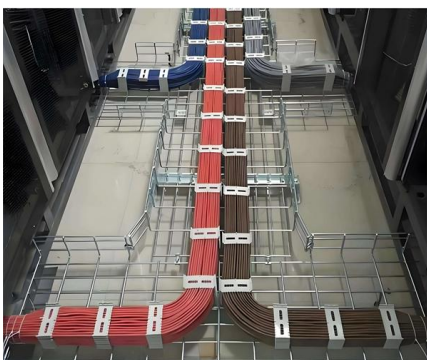
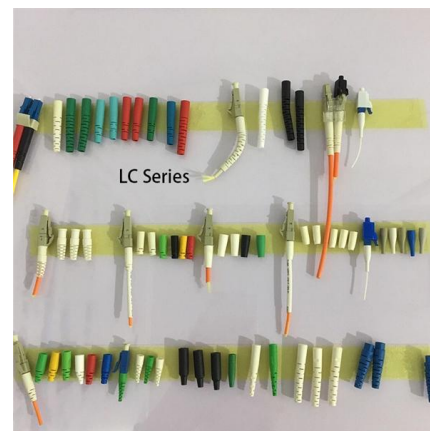
At any given time on board the space station, a large array of different experiments are underway within a wide range of disciplines. Here, you can search the

[Contact Us](#)

What is a Fiber Optic Sensor?

Learn all about the principles, structures, and features of eight sensor types according to their detection principles. The fiber optic sensor has an optical fiber

[Contact Us](#)



How to Specify Fiber Optic Sensors

Photoelectric sensors come with a variety of light emission types (infrared, visible red, laser Class 1 and 2), sensing technologies (diffuse,

[Contact Us](#)



How To Test Fiber Optic Cable With Light

A visual fault locator emits a red light through the fiber optic cable, making it easier to locate any breaks or bends in the cable. By following these simple steps, you can effectively test your

[Contact Us](#)



CSM_FiberSensor_TG_E_2_1

In the same way as for Reflective Sensors, Limited-reflective Sensors receive light reflected from the sensing object to detect it. The emitter and receiver are installed to receive only regular-reflection

[Contact Us](#)



Fiber Optic Test Light: Troubleshooting Tips

While a fiber optic test light can't directly detect contamination, contamination can cause signal loss. If the light appears dim or non-existent even with a strong light source from the fiber optic test light,

[Contact Us](#)



SUPPORTS

DIN RAIL INSTALLATION



EATON 1551E-8534 Fiber Optic Sensors , WESCO

Specifications Type: Photoelectric Fiber Optic Sensor Voltage: 24-240V AC, 12-240V DC Output Mode: Light/Dark Operate Output Configuration: SPDT EM Relay Connection Type: 5 Pin Dual Key Micro

[Contact Us](#)



Fiber Optic Troubleshooting: Expert Guide for Common

Troubleshoot fiber optic issues like a pro with our expert guide. Resolve common problems and ensure seamless connectivity.

[Contact Us](#)



More products



Visual Fault Locator Tutorial: Everything You Need to Know

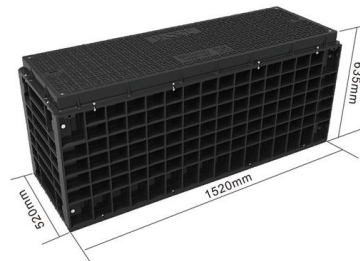
A visual fault locator is a compact, handheld device that emits a visible light beam, typically in the red wavelength range, through a fiber optic cable. This bright,

[Contact Us](#)

How to Use a Visual Fault Locator (VFL): A Step-by

When it comes to testing fiber optic cables, a Visual Fault Locator (VFL) is an essential tool in your toolkit. A VFL is used to detect faults, breaks, or

[Contact Us](#)



Contact Us

For datasheets, pricing, or custom fiber access solutions, please visit:
<https://frindel.es>