

Fiber optic cold connectors are prone to breakage



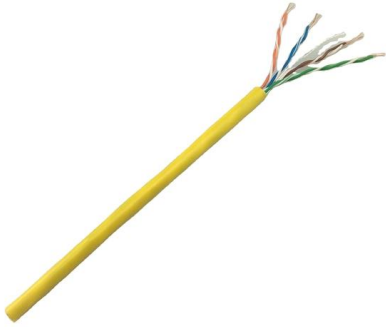


Overview

Accumulation of ice and snow on aerial fiber optic cables can add weight and cause sagging or tension, potentially leading to physical damage or breakage. These cables, composed of thin strands of glass or plastic, transmit data as light signals, ensuring rapid and efficient communication. There are three common types of fiber connectors: SC, ST (bayonet-twist) and LC (push-pull locking). The LC connector is most commonly chosen, because it is much smaller than the other two, and also provides a secure clip connection. The fiber connection is UV resistant, salt spray resistant and sealed to IP66, IP68 and IP69K, while still providing an industry-standard LC interface as specified by IEC 61754-20. Fiber optic cabling problems with extreme cold happen when water finds its way into the ducts housing the cables.



Fiber optic cold connectors are prone to breakage



How Winter Weather Impacts Fiber Optic Cables , Network Drops

Cold weather can cause issues with fiber optic cables and affect your connection. Learn what problems can happen and simple ways to prevent or fix them.

[Contact Us](#)

Optical fiber fast connector/cold connection skills

Conclusion Optical fiber fast connectors are an excellent alternative to traditional fiber connectors due to their ease of use and quick installation. Installing a fast connector requires specific skills and

[Contact Us](#)



Causes of Faults in Fiber Wiring Frames

Fiber optic cables are widely used for transmitting data over long distances due to their high bandwidth, low latency, and resistance to electromagnetic interference. Fiber wiring frames, also

[Contact Us](#)



The advantages and disadvantages of fiber -fiber cold

Optical fiber transmission has the advantages of wide transmission frequency, large communication capacity, low loss, no electromagnetic



A comprehensive analysis of common faults in

Communication fiber optic cables are the backbone of modern telecommunication networks, enabling high-speed data transmission over long

[Contact Us](#)



Can Fiber Optic Cables Freeze?

Conclusion: Can Fiber Optic Cables Freeze? While fiber optic cables don't "freeze" like water does, cold temperatures can affect their physical protective layers, potentially leading to issues like

[Contact Us](#)



What Freezing Weather Can Do To Your Fiber Optic Cables

For example, a fiber distribution panel might experience increased splitter loss in optical fiber, affecting the overall performance of the network. Moisture ingress is another issue. Water can

[Contact Us](#)



OM3 Fiber Patch Cable Family



Diagnose and Troubleshoot Damaged Fiber Optic Cables

Conclusion Diagnosing and troubleshooting fiber optic cables ensures reliable performance and minimizes costly downtime. By understanding common damage

[Contact Us](#)



How easy does fiber optic break?

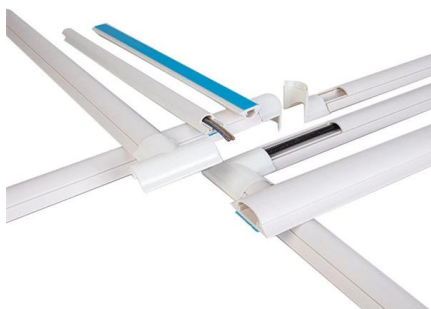
Fiber optic cables are designed to be durable and resilient, but they are not immune to damage. The fibers themselves are incredibly thin, often less than the diameter of a human hair, which makes

[Contact Us](#)

Does cold weather affect fiber optic cable?

One such factor is temperature, particularly cold weather conditions. In this article, we will explore how cold weather can impact fiber optic cables and discuss strategies to mitigate

[Contact Us](#)



Does cold weather affect fiber optic cable

The fiber optic industry is continually evolving, with research and development efforts focused on enhancing the cold-weather performance of fiber optic cables. Innovations in materials

[Contact Us](#)



Weather Impact on Fiber Optic vs Copper Cable Performance

Explore how fiber optic and copper cables withstand various weather conditions and their effects on telecommunications engineering.

[Contact Us](#)



Extreme temperatures: getting connectivity right in any

In cold environments, choosing the right materials and connector configuration matters. Since connectors often freeze and crack, connectors enclosed in plastic

[Contact Us](#)

Will Fiber Optic Cables Be Damaged?

Connectors and interfaces, which are relatively fragile, are also prone to damage during installation. External Forces: Excavation work, vehicle collisions, or even gunshot injuries can sever fiber optic



[Contact Us](#)



Main Causes of Fiber Optic Failures, Industry News

3 pressure or Breakage of Fiber Optic Cable: When fiber optic cables experience uneven stress, such as pressure or temperature changes affecting plastic-coated fibers, they may

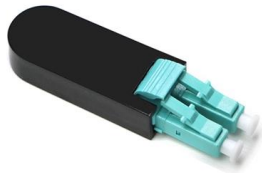
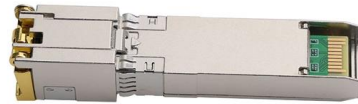
[Contact Us](#)



The advantages and disadvantages of fiber -fiber cold

When light is transmitted in an optical fiber, a loss will occur, and this loss is mainly composed of the transmission loss of the optical fiber itself and the

[Contact Us](#)



Does Cold Weather Affect Fiber Optic Cable?

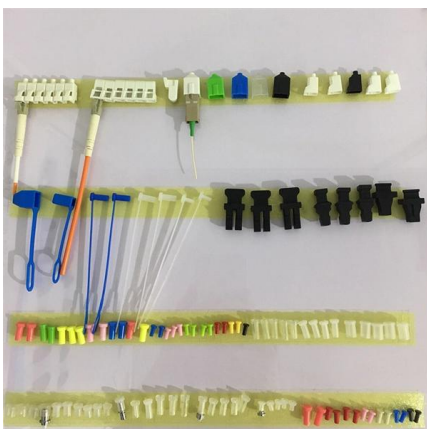
Fiber-optic cables have a protective coating made of PE or PVC that can withstand very high temperatures, such as those seen in the Middle East.

[Contact Us](#)

The principle and characteristics of optical fiber quick connector/cold

The fiber optic quick connector/cold connector is a very innovative field-terminated connector, which contains factory-installed optical fiber, pre-polished ceramic ferrule and a

[Contact Us](#)



Does cold weather affect fiber optic?

The cold weather is here so let's discuss how fiber can be affected by the temperature change. Why does it affect fiber optic? How can we prevent this?

[Contact Us](#)

Winter-Proofing Your Fiber Optic



Connections

While fiber optics are tough, cold temps can cause trouble. Water in cables can freeze, potentially harming connections. Ensure tight seals on cable joints and connectors to keep water out.

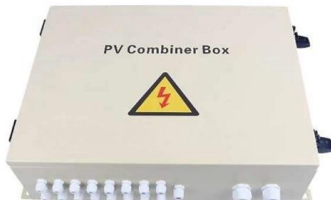
[Contact Us](#)



Caring for fibre optic cables -- damaged is worse than

Figure 1 -- Fibre optic cable construction. Fibre breakage The glass core in a fibre optic cable is fragile. It is slightly thicker than a human hair but

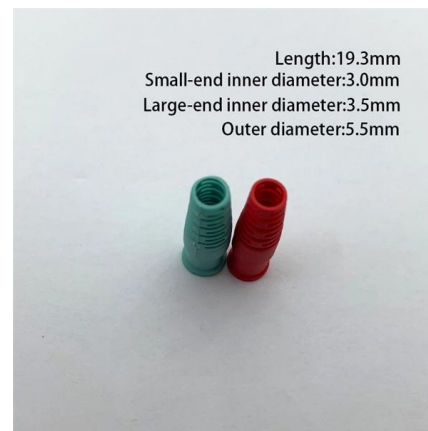
[Contact Us](#)



Will Cold Weather Affect Fiber Optic Cables?

Accumulation of ice and snow on aerial fiber optic cables can add weight and cause sagging or tension, potentially leading to physical damage or breakage. Freezing

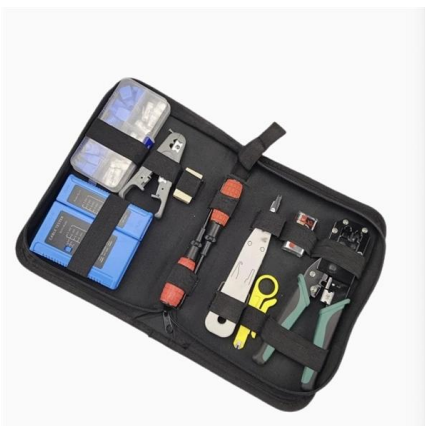
[Contact Us](#)



cold weather affect fiber optic cables and connectors

A suitable connector, which is specifically designed for harsh environments, can ensure the fiber conduit is sealed, and the fiber itself is safe from the risk of ice formation. There are three

[Contact Us](#)



What Freezing Weather Can Do To Your



Fiber Optic Cables

This is particularly true for Single mode fiber and simplex optical fiber. Over time, the constant expansion and contraction can make these cables brittle, increasing the risk of breakage,

[Contact Us](#)



Debunking Common Myths About Fiber Optic Cables

Fiber optic cables have been hailed as the future of internet connectivity, and with good reason. They provide faster, more reliable internet

[Contact Us](#)

What Causes Fiber Optics to Fail? 5 Reasons

What Can Affect Fiber Optics? Let's look at the damage to the fiber optic. One of the most common is complete or partial breakage. This can happen due to external

[Contact Us](#)



Fiber wiring often see fault solution

If fiber misalignment is detected, it may be necessary to re-align the fibers or replace the connector. Temperature-Related Issues Fiber optic cables are sensitive to temperature changes, and

[Contact Us](#)



Fiber optic quick connector cold joint

The wide application of fiber-to-the-home (FTTH) has promoted the rise of fiber optic fast connectors/cold connectors. This product has the characteristics of small size, fast termination, low

[Contact Us](#)



How does cold weather affect fiber optic connectors and cables?

Like the 4000 Series Fiber, the 6000 Series Fiber connector is suited for outdoor broadcasting, FTTx, server room engineering, civil engineering and aviation & rail applications. The

[Contact Us](#)

How does cold weather affect fiber optic connectors and

To mitigate this problem, one approach is to only install fiber cables buried below the frost line, so there is no threat of ice. But this solution can be extremely

[Contact Us](#)



Contact Us

For datasheets, pricing, or custom fiber access solutions, please visit:
<https://frindel.es>