

# Fiber optic cable tray cross-section fill rate





## Overview

---

The NEC rule requires that the cable cross-sectional areas together may not exceed 50% of the tray area (width x depth = fill). While there are several specific types of listings for power cables, specifically for tray applications, there is no equivalent tray rating for optical fiber cables. This calculator determines if your tray meets industry standards (typically 30-50% fill for alternating single-layer or 40-50% for random arrangement). Fill ratio — IEC 61537 and NEC Article 392 both cap power cables at 40-50 % of the tray cross-section. Metosu's TRC (perforated) and TRU (non-perforated) trays ship in 10 widths (100-900 mm), 4 depths (50-150 mm), and 2 standard.



## Fiber optic cable tray cross-section fill rate

---



### Fill Ratio Calculator , Fiber Conduit Fill Calculator , Corning

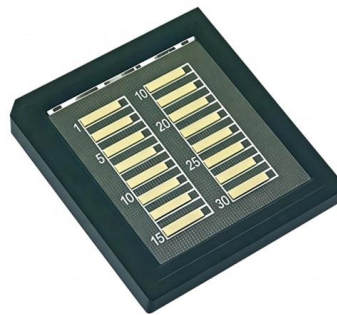
This calculator is designed to estimate fill ratio for fiber optic cables installed in ducts. Fill ratio is one of many variables that must be considered when planning fiber optic cable installations. Corning Optical

[Contact Us](#)

### Cable Tray Fill Calculator: Sizing for NEC/IEC

Ensure your cable runs meet NEC safety standards with our Cable Tray Fill Calculator. Calculate fill ratios for CAT6, Power, and Fiber cables to

[Contact Us](#)



### Cable Tray Fill Percentage Calculator

Cable Tray Fill refers to the amount or percentage of space that cables occupy within a cable tray. This is a crucial aspect to consider in cable management as it directly impacts the efficiency and safety of

[Contact Us](#)

### Cable Tray Fill Calculator

Easily calculate the fill ratio and load capacity of cable trays with our Cable Tray Fill Calculator. Ensure safety, efficiency, and compliance with industry

[Contact Us](#)



### **Cable Tray Fill Percentage Calculator**

This article provides a detailed guide on cable tray fill percentage calculation, ensuring safe, efficient, and compliant electrical installations.

[Contact Us](#)



### **Cable Fill Ratios and Sizing Guide , PDF , Optical Fiber**

This document provides sizing guidelines for cable containment, power separation, and optical fiber for cabling installations. It includes cable fill ratios for

[Contact Us](#)



### **Data Centre Cable Trays: High-Density Cabling Guide**

Learn about Data Centre Cable Trays for high-density cabling. Get a guide on design, materials, smart management, & future tech for data halls.

[Contact Us](#)

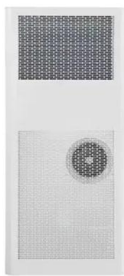




## System Design Calculators , Corning

Use the cable tray fill rate calculator to estimate available space in a cable tray after deploying the required number of copper or fiber cables. The tool helps planners assess tray capacity and future

[Contact Us](#)



## Cable Tray Sizing Calculator

The calculator computes the cross-sectional area of all cables and compares it to the available tray cross-section. The fill percentage indicates how much of the tray is

[Contact Us](#)

## Cable Trays and Optical Cables

Section 392-10(a) permits optical fiber cables in tray systems subject to conditions of Article 770. Article 770 is the portion of the NEC that addresses optical fiber cables in depth.

[Contact Us](#)



## Cable Tray Fill Calculator: Free Download

Master cable tray fill calculations with our step-by-step guide and Excel-based calculator for quick and accurate results.

[Contact Us](#)



## 10G Tray Fill Rate Calculator , Corning

LANscape® Solutions - 10G Tray Fill Rate Calculator The Tray Fill Rate Calculator calculates the amount of remaining space available for use in the cable tray once the number of copper or fiber

[Contact Us](#)



## Cable Tray Fill Calculator

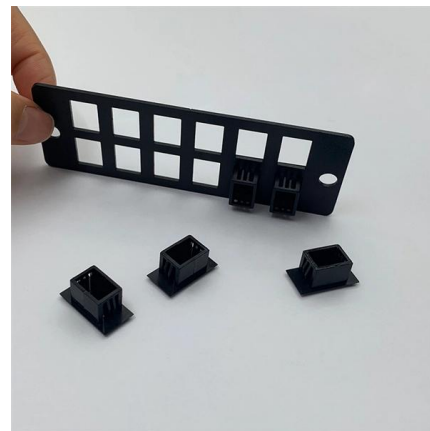
To calculate the fill ratio, divide the sum of the cross-sectional areas of all cables by the total usable cross-sectional area of the cable tray. Multiply the result by 100 to express it as a percentage.

[Contact Us](#)

## Cable Tray Fill Ratio Calculation Guide

The document provides a cable fill ratio table for an EZ Tray cable management system. The table lists various cable tray part numbers, widths, and their

[Contact Us](#)



## Cable Tray Fill Calculator & Formula Online Calculator Ultra

The Cable Tray Fill Calculator helps in determining the percentage of space occupied by cables within a cable tray, which is essential for ensuring safety, efficient cable management, and

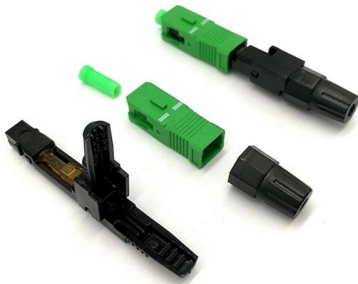
[Contact Us](#)



## Fiber Raceway Fill Ratio & Capacity Guide

Learn how to calculate fiber raceway capacity and fill ratio. Engineering guide with load data, airflow impact, and real-world design insights.

[Contact Us](#)



## CommScope

The Input Parameters table contains cable and conduit parameters that may be selected with the exception of Cable Area. The selected values are used to populate the two lower tables that have

[Contact Us](#)

## 10G Tray Fill Rate Calculator , Optical Communications , Corning

The Tray Fill Rate Calculator calculates the amount of remaining space available for use in the cable tray once the number of copper or fiber cables required to serve the user-entered number of circuits



[Contact Us](#)



## Fiber Optic Cable and Fiber Innerduct Filling Ratio

Multiple cables can be pulled at once, as long as the tensile load is applied equally to all cables. If future cable pulls in the same duct or conduit are a possibility, fiber

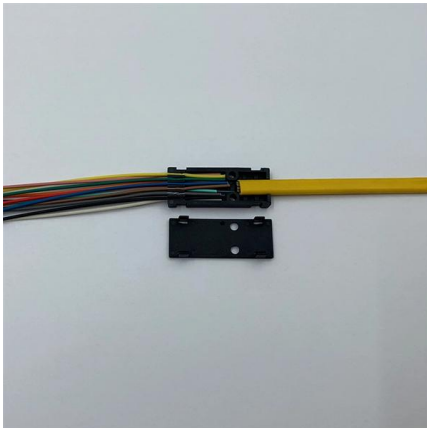
[Contact Us](#)



**CommScope**

Cabling and Pathways Estimator The Input Parameters table contains cable and conduit parameters that may be selected with the exception of Cable Area. The selected values are used to populate the two

[Contact Us](#)



**Cable Tray Fill Calculator , NEC 40% Rule , CalcShed**

Free cable tray fill calculator to estimate tray fill percentage by tray width/depth and cable diameter/count. Includes a planning pass/high indicator.

[Contact Us](#)

**Cable Trays and Optical Cables**

While there are several specific types of listings for power cables, specifically for tray applications, there is no equivalent tray rating for optical fiber cables. According to the 2014 National

[Contact Us](#)



**Flextray load and fill recommendations**

The NEC rule requires that the cable cross-sectional areas together may not exceed 50% of the tray area (width x depth = fill). Cables will nearly completely fill the cable tray when reaching the 50%

[Contact Us](#)





## Cable Tray Capacity Calculator

The fill ratio is the percentage of the cross-sectional area of the tray that can be filled with cables. This is important for ensuring that cables are not

[Contact Us](#)



## Cable tray sizing: width, depth, and fill ratio. • METOSU

Fill ratio is the percentage of the tray's internal cross-sectional area actually occupied by cables. It is the single most important number for long-term performance, and the most frequently

[Contact Us](#)

## GENERAL INFORMATION

Cable trays or raceways often provide a convenient, safe and efficient method of fiber optic cable installation. Trays can be installed in ceilings, below floors and in riser shafts. When installing fiber

[Contact Us](#)



## Contact Us

---

For datasheets, pricing, or custom fiber access solutions, please visit:  
<https://frindel.es>