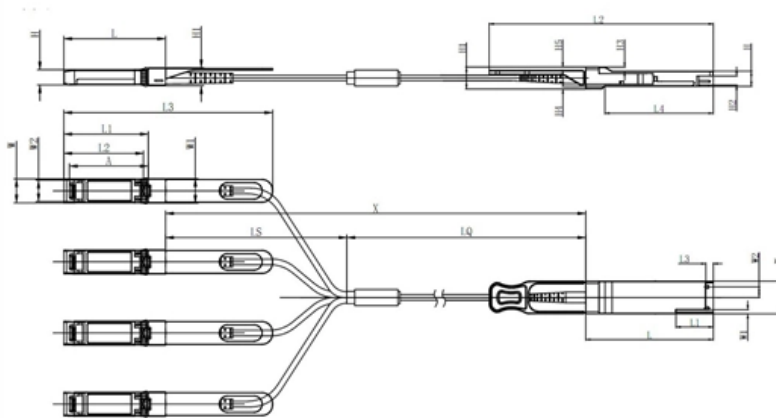


# Fiber Optic Switch Alarms



Unit mm

QSFP28	L	L1	L2	L3	L4	W	W1	W2	H	H1	H2	H3	H4	H5	H6
Max	72.2	-	128	4.35	61.4	18.45	-	6.2	8.6	12.4	5.35	2.5	1.6	2.0	-
Type	72.0	-	-	4.20	61.2	18.35	-	-	8.5	12.2	5.2	2.3	1.5	1.8	6.55
Min	68.8	16.5	124	4.05	61.0	18.25	2.2	5.8	8.4	12.0	5.05	2.1	1.3	1.6	-

SFP28	L	L1	L2	L3	W	W1	W2	H	H1	A
Max	57.6	47.7	44.55	119.9	13.8	14.0	12.3	8.7	10.3	45.25
Type	57.4	47.5	44.35	117.9	13.55	13.8	12.1	8.5	10.1	45
Min	57.2	47.3	44.15	115.9	13.3	13.6	11.9	8.4	9.9	44.65





## Fiber Optic Switch Alarms

---



### Patton Contact Closure Systems

Applications include alarm event triggering, building automation, environmental control systems, fire & alarm systems, gate control, traffic signal control

[Contact Us](#)

### Optical fiber intrusion alarm systems

After eliminating the causes, replacing the signal generator and resetting the sensor, it is again on alert. This means: the alarm message is active until the danger has been eliminated, the signal transmitter

[Contact Us](#)



### Fiber Optic Troubleshooting: Expert Guide for Common

Troubleshoot fiber optic issues like a pro with our expert guide. Resolve common problems and ensure seamless connectivity.

[Contact Us](#)

### TC3820datasheet-010C.ai

Ideal for mission critical fiber optic ring networks, the TC3820 Redundant Ring Gigabit Ethernet Switch provides maximum reliability through its sophisticated redundant ring technology. If a fiber cable or



### Alarms & Fibre Optics & Switches , Mr Resistor Lighting

Alarms & fibre optics & switches add a touch of elegance to your space with our professional lighting design service. With over 50 years of knowledge in lighting, the team at Mr Resistor Lighting are here

[Contact Us](#)

### Fiber Optic Perimeter and Data and Network Security

Fibre optic cables can be attached to any type of fence to detect and pinpoint the location of disturbances including cutting, climbing and lifting. Utilising advanced

[Contact Us](#)



### SONET/SDH Alarms Troubleshooting Guide , PDF

This document provides troubleshooting tips for common SONET/SDH alarms such as LOS, LOF, LOP, AIS, and RDI. It explains the causes and solutions, including

[Contact Us](#)





## Alarm (Relay Contact) over Fiber Modems by S.I. Tech, Inc.

Below is a listing of fiber optic modems that support alarm systems. For these units multimode is standard, single mode is optional. Refer to the table below and product data sheet for additional

[Contact Us](#)



## Fiber Optic Fire Alarm System

Discover the benefits of Fiber Optic Fire Alarm Systems over Ethernet-Based Fire Alarm Monitoring, ensuring reliable, lightning-resistant, and long-distance connectivity for enhanced safety.

[Contact Us](#)

## FD508 Fibre optic sensor , OPTEX Europe

When the FD508 detects intruders, it sends alarm messages to a head end, and also switches relay contacts that can be used to manage lights, cameras, sound

[Contact Us](#)



## Using Fiber Optic Contact Closure Systems In Fire Alarm Applications

Using Fiber Optic Contact Closure Systems In Fire Alarm Applications The use of fiber optic data transmission technology is well known in telecommunications, local area networks, the closed circuit

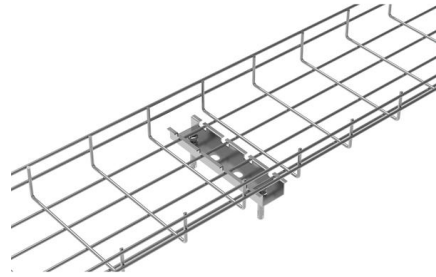
[Contact Us](#)



## Fiber optic System alarms in English language.

I added total number of 19 alarms which reportedly occurs in our fiber optic Transmission Network. I hope so its a great opportunity to learn for beginners or trainers.

[Contact Us](#)



## Replacing telephone lines with IP for alarm

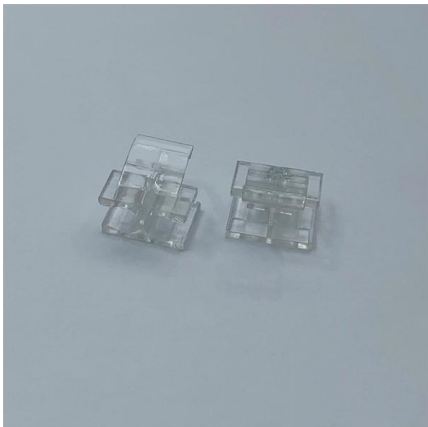
Upgrade your alarm communication from POTS to IP for reliability and security. Learn why fiber is the new challenge for alarm monitoring and how to transition to

[Contact Us](#)

## Fiber Optic Intrusion Detection System

Our fiber optic intrusion detection system integrates collection, calculation and analysis, reduces data transmission time, improves the acquisition bit width, and

[Contact Us](#)



## How to Reduce False Alarms in Fiber Optic Temperature Monitoring

False alarms in fiber optic temperature monitoring can reduce reliability, raise costs, and weaken user trust. They can be minimized through proper design, quality installation, smart alarm

[Contact Us](#)



## What are the Common Client Level Alarms on Optical

Client level alarms are notifications generated by optical devices that indicate a potential issue with the device. They are sent to the network operations

[Contact Us](#)



## Fiberoptic Switch , Fiber Optic Sensing Switch

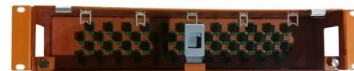
FiberStrike's fiberoptic switch provides the quickest fiber optic sensing for any bridge structure, so you can ensure maximum safety on the structure.

[Contact Us](#)

## Troubleshooting Fiber

Optical Fault Finders While VFLs work well for exposed lengths of fiber by illuminating bad connections and breaks, they are not very helpful for long cable

[Contact Us](#)



## Fiber Cable Monitoring System, Fiber Network

GLSUN's fiber cable monitoring system combines with OTDR, optical switches and network management software to form a speedy and intelligent integrating

[Contact Us](#)



### **OP 100 opto fibre alarm analyzer/interface unit, 8-15 VDC, NC,Relay**

The control unit is connected to a 24-hour loop in the control panel and any attempt to remove a device or sabotage the optical fibre will generate an alarm. The fibre allows the monitored device to be used

[Contact Us](#)



### **FS Community**

Hier sollte eine Beschreibung angezeigt werden, diese Seite lässt dies jedoch nicht zu.

[Contact Us](#)

### **Alarm (Dry Switch Relay) To Fiber - HANUTECH**

The device Dry Contact 4 Way Forward Switch will act as a bridge (BRIGED) to achieve a long distance and relatively high stability. Supports 4 pairs of incoming

[Contact Us](#)



### **, Transitioning Your Alarm System to Fiber Optic Phone Lines**

Throughout the communications industry, POTS (Plain old telephone service) lines are being replaced with Fiber Optic phone lines. Consumers with alarm systems that use on a phone

[Contact Us](#)



## BT's switch off and how it will affect your fire and

A significant upgrade to the UK's telephone network means intruder and fire alarms that signal over the telephone network will stop working at the end

[Contact Us](#)



## THE USE OF FIBER OPTICS IN A NETWORKED FIRE ALARM SYSTEM

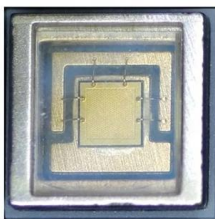
LaGuardia Airport implemented a fiber optic fire alarm system in 1994 to improve signal transmission to the Central Fire Command Station, enhancing data integrity and response times.

[Contact Us](#)

## FiberPatrol FP1150

Buried Perimeter Detection Applications When an intruder moves across the ground above a buried fiber optic sensor cable, whether walking, running, or crawling,

[Contact Us](#)



## Fiber Intrusion Alarm - Real-Time Detection of

Protect your fiber infrastructure with Micropol's intrusion alarm. Detects and classifies vibrations in real time to prevent outages, damage, and tampering.

[Contact Us](#)



## Fibre Optic Alarms

Fibre Optic Alarms Filter Filter results Intrusion Alarm System ViP Power supply units Fatum Modules System OP 105

[Contact Us](#)



## Addressing OLP Switching Challenges: Alarms and Performance

Optical Line Protection (OLP) Switching plays an essential role in maintaining uninterrupted network service, even during fiber cuts or link failures. Delve into intricate technical

[Contact Us](#)

## Contact Us

---

For datasheets, pricing, or custom fiber access solutions, please visit:  
<https://frindel.es>