

Fiber Optic Cable Fault Calculation





Overview

First, you should be aware of the fiber loss formula: The Total Link Loss = Cable Attenuation + Connector Loss + Splice Loss
Cable Attenuation (dB) = Maximum Cable Attenuation Coefficient (dB/km) × Length (km)
Connector Loss (dB) = Number of Connector Pairs × Connector Loss. To be able to judge whether a fiber optic cable plant is good, one does a insertion loss test with a light source and power meter and compares that to an estimate of what is a reasonable loss for that cable plant. The estimate, called a "loss budget" is calculated using typical component losses for. Use this worksheet to input values for all variables that will impact your system's performance. This calculator determines fiber loss based on input power, output power, and the length of the fiber optic cable.



Fiber Optic Cable Fault Calculation



Optical power meter

Optical power meter An optical power meter (OPM) is a device used to measure the power in an optical signal. The term usually refers to a device used for measuring the average power in fiber optic systems.

[Contact Us](#)

Optical Fiber Cable-Fault Location Detection Procedure

Optical fiber cables are manufactured with excess fiber length in buffer tubes to avoid change in optical characteristic of fiber by any external force during installation. Precise value for this excess fiber

[Contact Us](#)



Common Fiber Optic Cable Problems And How To Troubleshoot Them

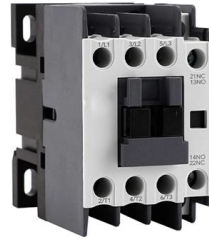
Most real-world faults are prevented or fixed by neat cable management, clean end-faces and a disciplined, documented test workflow. Stick to that sequence and you'll resolve the majority of

[Contact Us](#)



ITU

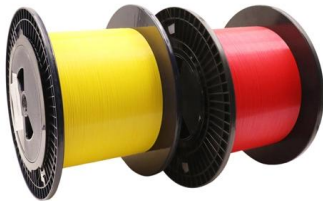
Show me range to terrestrial fiber nodes on the map? Show the SAIL subsea cable on the map Is the ITU building in Geneva Switzerland within 10 km of a fibre node? Start measuring on the map to see



Link Loss Budget Calculator , Fiber Optic Link Loss Budget

Corning's link loss budget calculator will calculate your total link loss and tell you if your system falls within Corning's recommended guidelines.

[Contact Us](#)



Optical Fiber , Optical Fiber Products , Corning

Optical fiber broadband brings together a culture of innovation, quality, and manufacturing excellence to create life-changing products.

[Contact Us](#)



Fiber Optic Cable Loss Calculation

This calculator provides the calculation of fiber loss in a fiber optic cable. Calculation Example: Fiber loss is a measure of the reduction in light power as it travels through a fiber optic

[Contact Us](#)



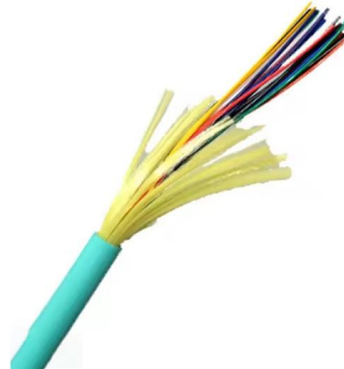
Fiber Optic Loss Calculator and Formula ,



RF Wireless

Calculate fiber optic loss based on input/output power and length, or determine output power given loss, length, and input power. Includes formulas.

[Contact Us](#)



Optical Communications Products

Browse our optical communication connectivity products designed to help you enable your communication networks. Easily create a bill of materials list.

[Contact Us](#)



Understanding Fiber Loss: What Is It and How to Calculate It?

This post introduces the main fiber loss types, the calculation process of link loss including fiber attenuation, connector loss, and splice loss, calculating power budget and calculating

[Contact Us](#)



MultiFiber(TM) Pro Optical Power Meter and Fiber Test Kits

Typical data center fiber installation means time-consuming, manual, and imprecise MPO validation. MultiFiber Pro Optical Power Meter and Source is 90 percent

[Contact Us](#)





VisiFault Visual Fault Locator

VisiFault Visual Fault Locator is a fiber optic visual fault locator by Fluke Networks that locates, verifies continuity, polarity of many near-end fiber faults with speed.

[Contact Us](#)



Fiber Optics Loss Budget Calculation , Fluke Networks

You can either compare this loss value to the application requirement or calculate the expected loss based on how many connectors and splices are in the link along with the length of the fiber link and

[Contact Us](#)

Optical Fiber Cable-Fault Location Detection Procedure

Optical fiber cables are manufactured with excess fiber length in buffer tubes to avoid change in optical characteristic of fiber by any external force during installation. Precise value for this excess fiber

[Contact Us](#)



Internet

Internet service providers (ISPs) establish worldwide connectivity between individual networks at various levels of scope. At the top of the routing hierarchy are the tier

[Contact Us](#)

Fiber Optic Cabling Loss Limits Explained -



Learn about fiber optic cabling loss limits & how to calculate them. Gain insights from experts on acceptable loss for cabling projects & explore the

[Contact Us](#)



Fiber Performance Calculator

Calculate link or channel loss and determine the supported applications and max lengths for the configuration. The configuration and results can be exported as PDF. You can also select

[Contact Us](#)



Seismometer

Fiber optic cables as seismometers A new technique for detecting earthquakes has been found, using fiber optic cables. In 2016 a team of metrologists running

[Contact Us](#)



Fbb Calculator

By entering these values, users can instantly determine the total loss for a fiber optic link, enabling better system design, troubleshooting, and maintenance planning.

[Contact Us](#)





Fiber Optic Attenuation Fixes and Loss Budget Tips

Key Takeaways Regularly clean fiber optic connectors to prevent signal loss and improve network performance. Use proper cable management to

[Contact Us](#)



The FOA Reference For Fiber Optics

Optical Time Domain Reflectometer (OTDR)
Download free OTDR Trainer Software for PCs
After you study this page, you can download a free OTDR Trainer to run

[Contact Us](#)

Guidelines Corning Recommended Fiber Optic Test

Introduction This paper explains the recommended guidelines for testing an installed fiber optic system. Fiber optic testing of a newly installed system not only verifies that the system meets its design

[Contact Us](#)



Types of cables, Uses, Benefits, and challenges

Cables are the backbone of modern electrical and communication systems. They are used to transmit electrical power, signals, and data over short

[Contact Us](#)



How Many Fibers Do You Need? Guide to Choosing

Learn how to choose the right fiber count for data centers, campuses, FTTH and backbone projects. Practical rules, sizing tips, and future-proof planning.

[Contact Us](#)



Fiber Optic Calculators , FSI Technical Tools

Utilize FSI's specialized fiber optic calculators for precise planning and design. Optimize your projects with our accurate, easy-to-use technical tools.

[Contact Us](#)



SEL-311L Line Current Differential Protection and Automation System

Direct Fiber or Multiplexed Communications-- Provide reliability and security with one or two differential communications channels. Select from ITU-T G.703 or EIA-422 electronic interfaces, IEEE C37.94,

[Contact Us](#)



Contact Us

For datasheets, pricing, or custom fiber access solutions, please visit:
<https://frindel.es>