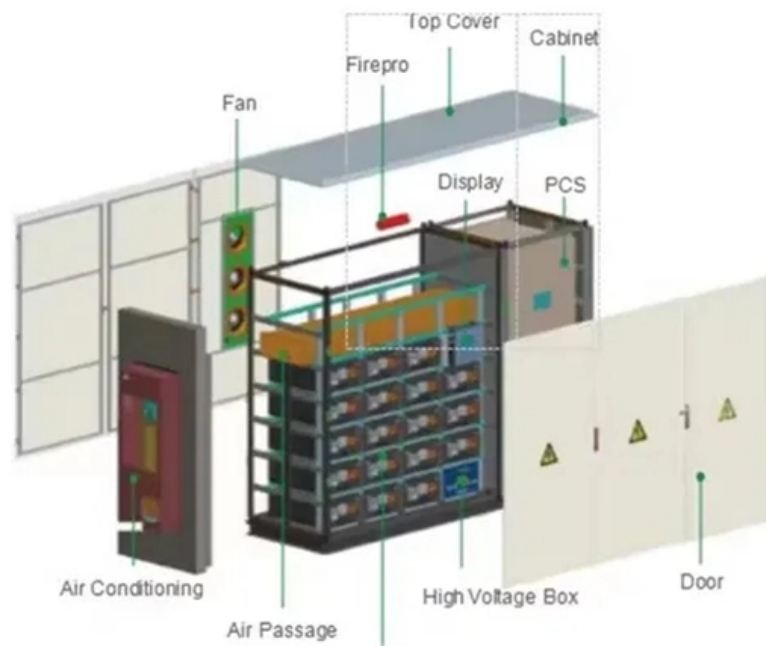


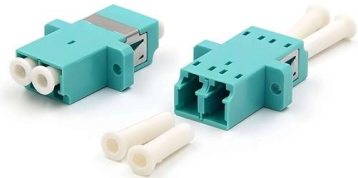
Factory-specific cable tray supports





Factory-specific cable tray supports

Cable Tray Supports -- ICS Industries



ICS Industries provides reliable cable tray supports, designed for secure mounting of cable trays in industrial environments. Benefit from our custom fabrication

[Contact Us](#)

Cable Tray Support Spacing: Key Guidelines Explained

Explore the essential cable tray support spacing requirements for safe and efficient installations. Learn NEC guidelines for perforated, ladder, and wire

[Contact Us](#)



CABLE TRAY SYSTEMS GUIDE

Hubbell's NEXTFRAME® Ladder Tray is the effective and widely used cable runway that supports and delivers bundles of cable between cabinets, racks, and closets, along walls, and suspended from

[Contact Us](#)

Cable Tray Supports , McMaster-Carr

Choose from our selection of cable tray supports in a wide range of styles and sizes. Same and Next Day Delivery.

[Contact Us](#)



Guide to cable support systems

The cable support lengths and fittings can basically be designed as cable trays, cable ladders or mesh cable trays, in which cables are routed. Fittings can, on the one hand, be used for horizontal or

[Contact Us](#)



What are Cable Trays & Different Types of Cable Trays

Cable trays, also known as carriers, are a mechanical support system that holds large networks of cables together. These trays provide a reliable, rigid,

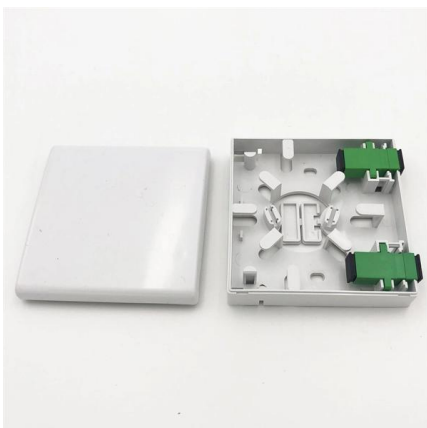
[Contact Us](#)



IEC Standard for Cable Tray: Complete Technical Guide

IEC Standard for Cable Tray: Complete Technical Guide The International Electrotechnical Commission (IEC) provides detailed guidelines for

[Contact Us](#)

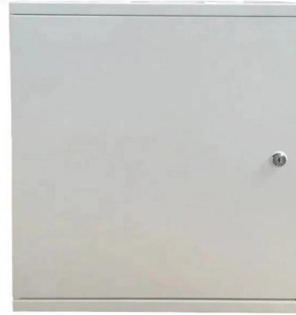




Support Systems for Cable Trays & Busbars

Reliable support systems for cable tray and busbars, designed for electrical and mechanical installations. Available in corrosion-resistant coatings.

[Contact Us](#)



Full cable tray systems specification document

B. Cable tray systems are defined to include, but are not limited to straight sections of [ladder type] [trough type] [solid bottom type] [channel type] cable trays, bends, tees, elbows, drop-outs, supports

[Contact Us](#)



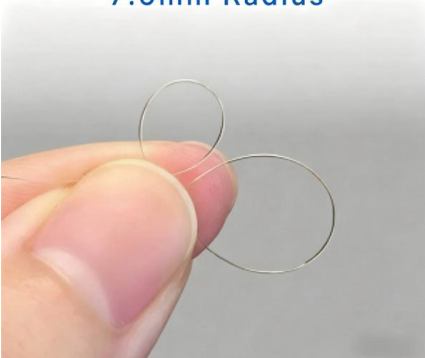
A Comprehensive Guide to Tray Cable

Tray cable is a widely used type of multiconductor or multipair cable approved for installation in cable raceways and cable trays. According to the NEC

[Contact Us](#)



7.5mm Radius



Cable Tray Systems: Requirements and Best Practices

Comprehensive guide to cable tray systems requirements: tray types, materials, loading, supports, bonding, routing, and best practices for safe electrical cable management.

[Contact Us](#)



B-Line series Cable Tray Design Considerations

As an industry leader in cable tray, Eaton offers one of the widest ranges of cable management solutions available in the market today with its B-Line series portfolio. With unmatched quality and service, we

[Contact Us](#)



Guide to cable support systems

Higher specific weights can only be achieved by cables with large cross-sections, which are less bendable and thus can support themselves better and, on account of their larger diameter, have a

[Contact Us](#)

What Is A Cable Tray? 5 Types Of Cable Trays

A cable tray is a structural system used to support and manage electrical cables in various settings, such as industrial, commercial, and residential environments.

[Contact Us](#)



Cable Tray Technical Guide A practical guide to product selection and

Cable tray length is selected based on the load to be supported, the distance between the supports (also referred to as the span), and handling and installation constraints.

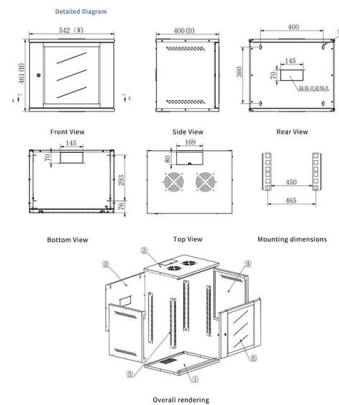
[Contact Us](#)



CABLE TRAY SYSTEMS GUIDE

Commonly called the Load Class, this defines the load-carrying capability of the tray for a specific support span distance. The design and cost of the cable tray is greatly affected by this designation.

[Contact Us](#)



Cable Tray SHIB NAL

All cable trays and their associated supports are rated for a specific maximum weight, based partly on the allowable fill area and the spacing of the cable tray supports.

[Contact Us](#)

Cable Tray Technical Guide A practical guide to product selection and

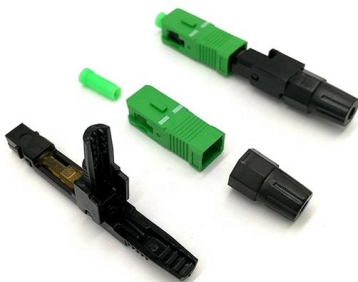
SOLID-BOTTOM CABLE TRAY Providing additional cable protection, solid-bottom cable tray is sometimes preferred to support and protect numerous small instrumentation and control cables.

[Contact Us](#)

DATA ADJUSTABLE, EASY TO USE



SET INCREASE DECREASE POWER SWITCH



Trayco cable trays, cable ladders and mesh trays , Trayco

Trayco is specialised in producing and optimising 100% Belgian cable trays, mesh trays, cable ladders, mounting and floor systems. We also play an important role

[Contact Us](#)



Best Practice Guide to Cable Ladder and Cable Tray Systems

Cable ladder systems and cable tray systems are designed for use as supports for cables and not as enclosures giving full mechanical protection. They are not intended to be used as ladders, walk ways

[Contact Us](#)



CABLE MANAGEMENT SYSTEMS CABLE TRAYS & ACCESSORIES

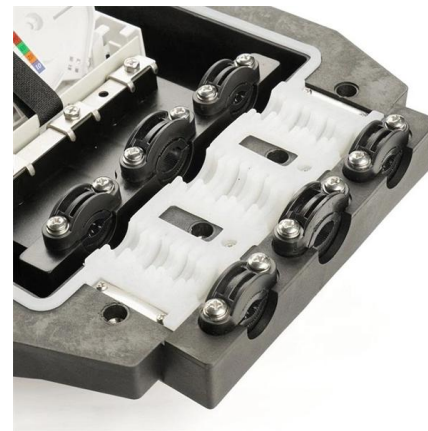
We manufacture a wide range of products capable of providing the characteristics which respond to the proposed application, along with quality of assembly, speed of installation, and cost-saving cable trays.

[Contact Us](#)

Cable Trays and Fittings

Cable trays consist of rigid components like supports, connectors, and fittings made of either certain steel alloys or aluminum materials. The right cable trays and

[Contact Us](#)



26 05 36 Cable Trays for Electrical Systems

Fasten and support cables that pass from one cable tray to another or drop from cable trays to equipment enclosures. Fasten cables to the cable tray at the point of exit and support cables

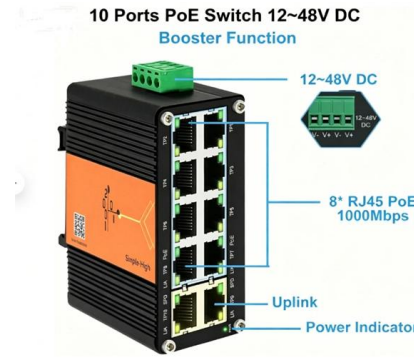
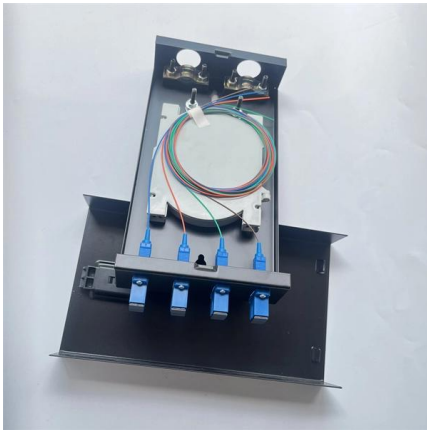
[Contact Us](#)



Perforated, GI, MS & Ladder Type Cable Trays

Explore a wide range of industrial cable trays, including ladder type, perforated, and powder-coated options. Heavy-duty designs for power plants and factories.

[Contact Us](#)



Guide to cable support systems

The cable support lengths and fittings can basically be designed as cable trays, cable ladders or mesh cable trays, in which cables are routed. On the one hand, fittings can be used for horizontal or

[Contact Us](#)

100+ Essential Questions Answered About Cable Trays:

Discover over 100 expert answers about cable trays, covering key topics like material selection, load capacity, installation methods, and maintenance.

[Contact Us](#)



Ultimate Guide to Cable Tray Selection - Types,

Selecting the right cable tray enhances efficiency, safety, and longevity. By considering your specific needs, cable tray type, material, and best

[Contact Us](#)

Cable tray manual



The distance between supports affects the tray strength exponentially; therefore the strength of the cable tray system selected should be designed around the specific support span chosen for that run.

[Contact Us](#)



Contact Us

For datasheets, pricing, or custom fiber access solutions, please visit:
<https://frindel.es>