

# **Fabrication of continuous multiple bends in cable trays**





## Overview

---

This manual is designed to guide workers through the detailed production process of ladder cable trays, including the manufacture of horizontal elbows, tees, crosses, reducing bends, and vertical bends, with emphasis on precision, safety, and quality control. Maintain spacing or to keep cables in place when the tray is erect the minimum bend radius for cables as they exit the bottom of the cable tray. A rung spacing of 6 to 9 inches (150 to 230 mm) is preferable when the cable tray is used for instrumentation and control applications that require. per foot at 20ft spans with less supports required, delivering significant structural steel savings. The bends, tees, crosses, risers and reducers of wire mesh cable tray can be easily and quickly made live at the project by using a bolt cutter.



## Fabrication of continuous multiple bends in cable trays

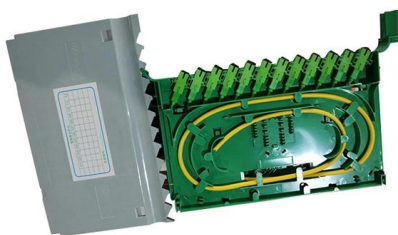
---



### Assembly Guide

When a wire cable tray is cut, the fact that a wire has been cut does not affect the level of protection. Let alone we have rubber caps to protect the cut ends. The assembly guide below will help the cable tray

[Contact Us](#)



### Cable Tray Design and Components Guide

This document provides information about cable trays and accessories, including straight cable trays, perforated trays, returned edge and flange types, and bent

[Contact Us](#)

### How to fabrication 200 mm cable tray bend

Forming the Bend: Use a manual bender or press brake to bend each section slightly to form the required curve. Ensure uniform bending to maintain the tray's integrity and cable support.

[Contact Us](#)



### Perforated Cable Tray , Star Fabricators

Perforated cable Trays are suspended from roof top by using threaded rods supported by C - Channel which results in better utilisation of space. Perforated Cable Tray Bends make it easier and faster for

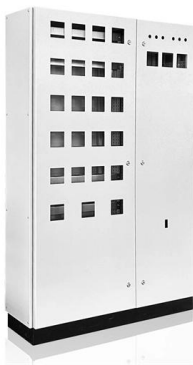
[Contact Us](#)



### Document DICOS

Do not use a cable tray as a walkway, ladder, or support for people; a cable tray is a mechanical support system for cables and raceways. Using cable trays as walkways can cause personal injury and can

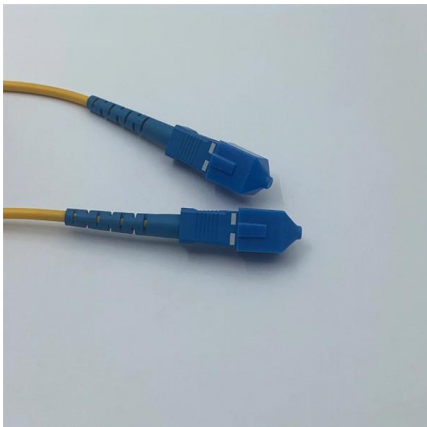
[Contact Us](#)



### How to Produce Wire Mesh Cable Trays and Complex

This article provides an in-depth guide on how to produce wire mesh cable trays and their complex connectors, such as horizontal elbows, tees,

[Contact Us](#)



### Bend Cable Trays , Harsha Group

Harsha Group offers a range of bend cable trays designed to provide a safe and organized solution for cable management in various applications. These trays are

[Contact Us](#)



## Cable tray manual

Where cable tray wiring systems with current carrying conductors are installed in a dust environment, ladder type cable trays should be used since there is less surface area for dust buildup than in

[Contact Us](#)



## Design Consideration we follow , powersolution.

Go through our design considerations in cable tray and ladder systems. Power Solution Industries offers a comprehensive range of cable tray and ladder

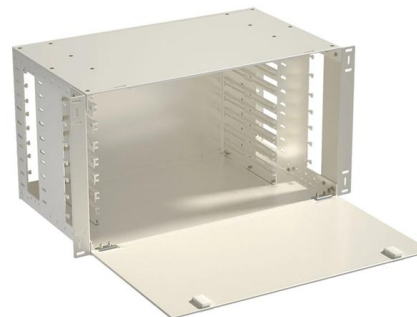
[Contact Us](#)



## VERTICAL BEND in PERFORATED CABLE TRAY by Fixotech

2. Outward and Inward: Vertical bends can be divided into two groups according to the way they bend in relation to the orientation of the cable tray. - Outward Bend: This kind of bend directs wires outward

[Contact Us](#)



## Cable Tray Technical Guide A practical guide to product selection and

Cable Tray Technical Guide A practical guide to product selection and installation This guide for engineers and installers has been developed by ABB as a practical reference regarding cable tray

[Contact Us](#)



## How to Produce Ladder Cable Tray: A Technical Manual

This manual is designed to guide workers through the detailed production process of ladder cable trays, including the manufacture of horizontal

[Contact Us](#)



## Cable Tray Bends , Harsha Group

Each type serves a unique purpose, accommodating different cable tray configurations and layouts. Cable Tray Bends are manufactured using materials

[Contact Us](#)



## Trunking Cutting Techniques Guide , PDF

The document provides instructions for forming various bends and joints in electrical trunking and cable trays. It describes: 1) How to mark and cut a right-angle

[Contact Us](#)



## Best Practice Guide to Cable Ladder and Cable Tray Systems

This publication is intended as a practical guide for the proper and safe\* installation of cable ladder systems, cable tray systems, channel support systems and associated supports.

[Contact Us](#)





## How to fabricate cable tray bend ,Cable tray installation , Cable tray

Is video mein cable tray ninit and bend banane ka tarika bataya hun marking cutting fitting Sara kuchh is video mein bataya hun full details mein Cable tray size 100x 50 mm Channel per pahli bar

[Contact Us](#)



## cable tray fabrication guide

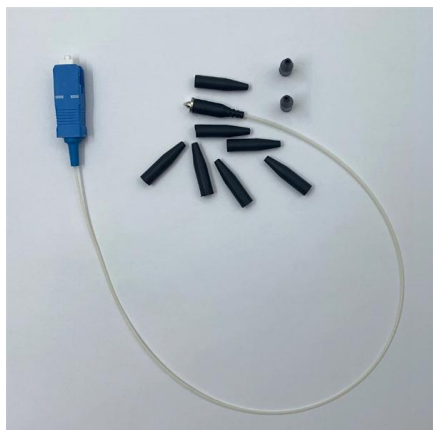
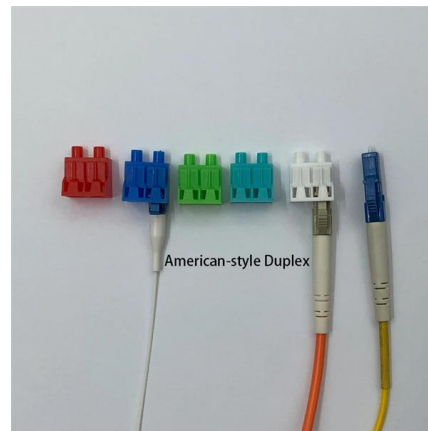
The purpose of this article is to define the sequence and methodology for the installation of electrical cable trays, cable trunking, cable raceways and boxes,

[Contact Us](#)

## Best Practice Guide to Cable Ladder and Cable Tray Systems

This guide covers cable ladder systems, cable tray systems, channel support systems and associated supports intended for the support and accommodation of cables and possibly other electrical

[Contact Us](#)



## Cable Tray Technical Guide A practical guide to product selection and

In designing supports for a cable tray system, consideration should be given to the loads associated with future cable additions and any additional loading that may be applied to the cable tray system (e.g.,

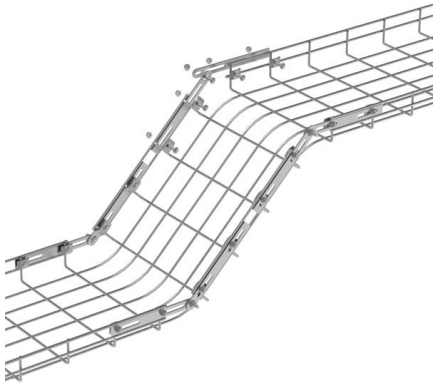
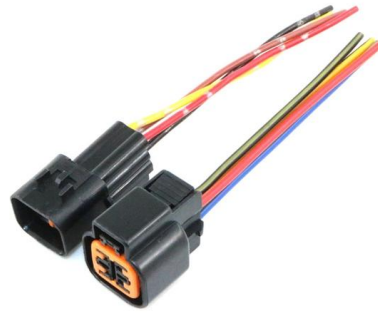
[Contact Us](#)



## **B-Line series Cable Tray Design Considerations**

Our wind certification report provides you with list of acceptable B-Line series cable tray supports, fittings and covers based off of the environmental conditions, cable loading, and type of cable tray in your

[Contact Us](#)



## **Bend Cable Trays, Cable Trays, Cable Tray Bend,**

Bend Cable Trays Vertical Inner Bend Cable Tray We offer our clients a wide variety of high quality Vertical Inner Bend Cable Tray that is manufactured from the

[Contact Us](#)

## **Technical Specification for Cable tray installation and cable laying work**

Scope :- This specification covers the following major activities; - Fabrication and installation of Mild Steel (MS) support structure for Galvanized Iron (GI) Cable tray. - Installation of perforated GI Cable

[Contact Us](#)



## **Cable trays manufacturers, Perforated type Cable**

Fixotech Engineering Systems Pvt Ltd., an ISO 9001-2008 Certified Company, engaged into manufacturing of Cable Management Systems & Accessories such

[Contact Us](#)





### Make a 90 Bend in Electrical Cable Tray

The Easy Guide to How to make a 90 electrical cable tray bend to measurement of your choice. Great if you are new or just forgot how to do it, this easy

[Contact Us](#)



From standard 1U to 6U sizes to fully customized Non-standard enclosures.

### HORIZONTAL BEND in LADDER CABLE TRAY by Fixotech

Description The purpose of a horizontal ladder bend cable tray is to make it easier for cables to be routed around bends or corners in horizontal cable management systems. The following are some of

[Contact Us](#)

### Bend for Perforated Cable Tray, Perforated Cable Trays

We manufacture Vertical, Horizontal Bend, elbow, Tee and cross for Perforated Cable Trays which are exclusively designed for standard support, Bends are

[Contact Us](#)



### Tee Bend for Cable Trays

Tee Bends for Cable Trays are essential for designing adaptable and effective cable management systems. They allow wires to be precisely branched in three different directions, guaranteeing that

[Contact Us](#)



## Assembly Guide

Guide for making bends, tees, crosses, risers and reducers from straight sections of wire basket cable trays live at the project.

[Contact Us](#)



## Contact Us

---

For datasheets, pricing, or custom fiber access solutions, please visit:  
<https://frindel.es>