

Fabrication of all bends in the cable tray



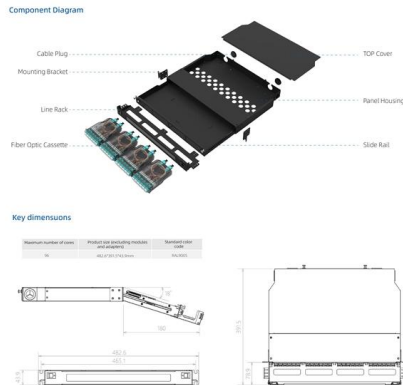


Overview

The assembly guide below will help the cable tray installer make the bends and others without difficulty even he had never installed wire mesh cable trays before. description of how to fabricate a 200 mm cable tray bend in English: How to Fabricate a 200 mm Cable Tray Bend - Description. This publication is intended as a practical guide for the proper and safe* installation of cable ladder systems, cable tray systems, channel support systems and associated supports. Since the jaws of the bolt cutter drags a layer of zinc across the cut end and forms a protective layer. maintain spacing or to keep cables in place when the tray is ect the minimum bend ra-dius for cables as they exit the bottom of the cable tray.



Fabrication of all bends in the cable tray



Trunking Cutting Techniques Guide , PDF

Handouts Trunking and Tray Work - Free download as PDF File (.pdf), Text File (.txt) or read online for free. The document provides instructions for forming various

[Contact Us](#)

cable tray bends and offset fabrication table

Resources For Electrical & Electronic Engineers cable tray bends and offset fabrication table Discover more from Electrical Engineering 123 Subscribe to get the latest posts sent to your email.

[Contact Us](#)



Assembly Guide

Guide for making bends, tees, crosses, risers and reducers from straight sections of wire basket cable trays live at the project.

[Contact Us](#)



Cable Tray Design and Standards Guide

1. The document outlines codes and standards that must be followed for design and construction of cable trays and their components. Standards listed include those

[Contact Us](#)



Best Practice Guide to Cable Ladder and Cable Tray Systems

This publication is intended as a practical guide for the proper and safe* installation of cable ladder systems, cable tray systems, channel support systems and associated supports.

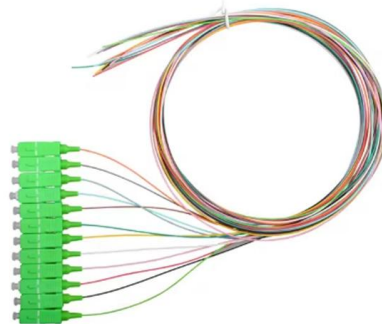
[Contact Us](#)



Assembly Guide

When a wire cable tray is cut, the fact that a wire has been cut does not affect the level of protection. Let alone we have rubber caps to protect the cut ends. The assembly guide below will help the cable tray

[Contact Us](#)



Metalix Cable Trays

Bends-Cable Trays Our company is a trusted manufacturer of high-quality bends for cable trays, engineered to provide seamless transitions and superior support in

[Contact Us](#)





Exploring the Different Bending Types for Wire Mesh

Wire mesh cable trays offer flexibility in design, allowing for bends that help installers navigate complex layouts, avoid obstacles, and ensure proper

[Contact Us](#)



How To Bend Cable Tray

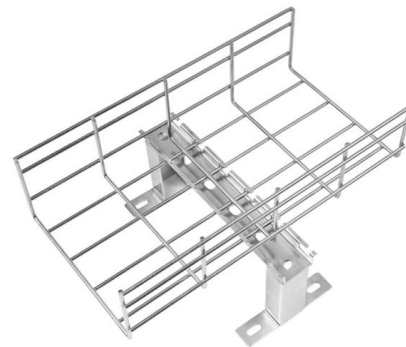
By choosing the right tools for the job, you will have the necessary equipment to effectively bend cable trays. These tools, along with proper preparation and measurements, will

[Contact Us](#)

Trunking Cutting Techniques Guide , PDF

The document provides instructions for forming various bends and joints in electrical trunking and cable trays. It describes: 1) How to mark and cut a right-angle

[Contact Us](#)



Fast shipment in stock Default white and black, contact customer service for notes

4U standard model



How to construct a flat 90° bend for Cable Trays

Construction of a flat 90° bend (G) The gusset is produced by cutting a piece of tray to the required size, removing 1 lip completely and bolting it to the

[Contact Us](#)



Best Practice Guide to Cable Ladder and Cable Tray Systems

This guide covers cable ladder systems, cable tray systems, channel support systems and associated supports intended for the support and accommodation of cables and possibly other electrical

[Contact Us](#)



Bend Cable Trays, Cable Trays, Cable Tray Bend,

All these Horizontal cable tray bends are not only durable and precise but also as per the technical details furnished by the client. These tray bends are used for the

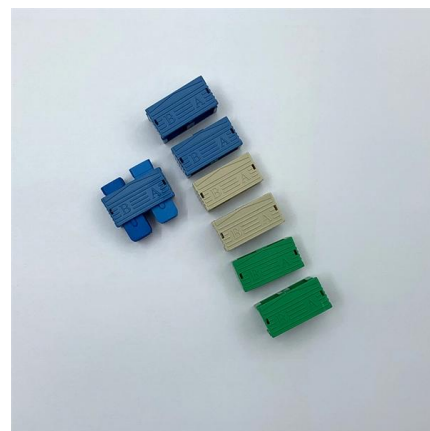
[Contact Us](#)



Cable Tray Technical Guide A practical guide to product selection and

Cable tray installed in a hazardous location must contain only those cables that are appropriate for this type of environment as defined in Chapter 5 of the NEC.

[Contact Us](#)



Cable Tray Technical Guide A practical guide to product selection and

Cable Tray Technical Guide A practical guide to product selection and installation This guide for engineers and installers has been developed by ABB as a practical reference regarding cable tray

[Contact Us](#)





Level 2 EFK Manual

Ensure that the cable tray is not cut across the slots. Ensure that all edges are deburred. Use only pencil to mark dimensions on the cable tray. Tray bending bars are required to be used on this exercise.

[Contact Us](#)



Smooth Transitions: Understanding the Important Role

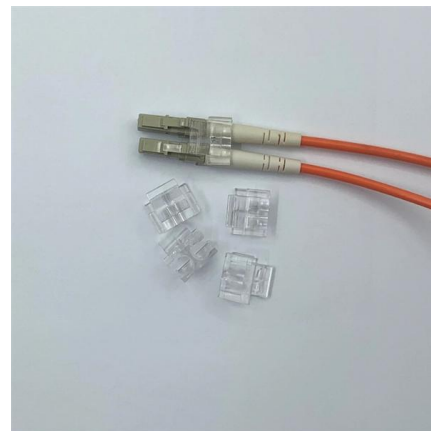
Cable tray bends play a critical role in ensuring smooth transitions and maintaining the integrity of electrical wiring systems. By providing controlled pathways for

[Contact Us](#)

CABLE TRAY SYSTEMS GUIDE

The Ladder Tray features light, rugged, tubular steel construction. It is designed for mechanical support and strain relief in long runs of cable and creates a smooth gradual bend for cable. Rail and stringer

[Contact Us](#)



Cable Tray Bending Equipment for Efficient and

A cable tray bending machine is a specialized piece of equipment designed to shape metal trays used for electrical cable management. These machines can

[Contact Us](#)



Make a 90 Bend in Electrical Cable Tray

90 Degrees Bends in Cable Tray - Flat, Internal and External Fabricated by Apprentice Electricians Electrical Cable Tray all Type Ninty Formula , cable tray a to z formula , cable tray bend formula

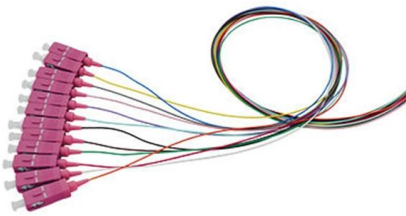
[Contact Us](#)



Types of Bends in Wire Mesh Cable Trays: A Detailed

Wire mesh cable trays are widely used in industrial and commercial installations to support and manage cables effectively. One of their greatest

[Contact Us](#)



How to fabrication 200 mm cable tray bend

Forming the Bend: Use a manual bender or press brake to bend each section slightly to form the required curve. Ensure uniform bending to maintain the tray's integrity and cable support.

[Contact Us](#)



CUTTING GUIDELINE

Hilti's cordless bandsaw is an appropriate tool for cutting low height, thin metal products such as cable ladders and trays and support channels. Accurate cutting is achieved with low noise and debris.

[Contact Us](#)





Contact Us

For datasheets, pricing, or custom fiber access solutions, please visit:
<https://frindel.es>