

Fabrication of 90° Vertical Bend for Cable Tray





Fabrication of 90° Vertical Bend for Cable Tray



Fiberglass cable tray 90 degree vertical inside bend assembly submittal

NOMINAL RADIUS 12 = 12" 24 = 24" 36 = 36"
FITTING TYPE VI = VERTICAL INSIDE. UNLESS OTHERWISE SPECIFIED MATERIAL SHOWN HAS BEEN FABRICATED IN

[Contact Us](#)

90 Degrees Bends in Cable Tray

This video is to inspire them as they work towards 107 task B. In this video they are producing 90 degrees bend in steel cable tray. The learners fabricate (make) flat, internal and external 90



[Contact Us](#)



Steel Perforated Cable Tray Vertical Bend, 90 Degree

Are Metal India Pvt. Ltd. - Offering Steel Perforated Cable Tray Vertical Bend, 90 Degree at INR 600/piece in Noida, Uttar Pradesh. Also find Cable Tray Bend price

[Contact Us](#)

Putting a 90 degree bend into Cable Tray

In this clip, David from EzyStrut has a length of EzyTray. He is going to show you how to use EzyStrut's ET/ET3/ET5 Radius plate to create a 90 degree bend in a piece of these cable trays

[Contact Us](#)



90 Degree Bend Perforated Cable Tray at Best Price

Discover our 90 Degree Bend Perforated Cable Tray made from durable steel, with a GI Galvanized surface finish and warranty. Perfect for routing cable at right angles, available in diverse sizes and

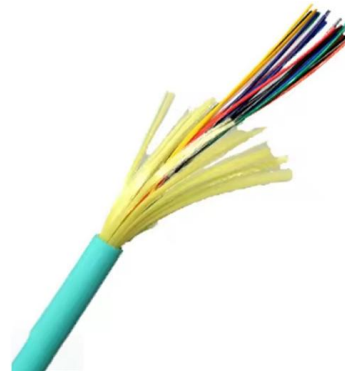
[Contact Us](#)



How to construct a flat 90° bend for Cable Trays

Construction of a flat 90° bend (G) The gusset is produced by cutting a piece of tray to the required size, removing 1 lip completely and bolting it to the

[Contact Us](#)



Master the Cable Tray Secret to Perfect Back of Bend

How to Master back of bend measurements on electrical Cable Tray. Make a 90 electrical cable tray bend to measurement with a gusset of your choice using one piece of tray.

[Contact Us](#)





How to Bend Cable Tray Students trading aid on how best to put an

Includes a full demonstration on how bend steel cable tray using a bending machine. This is a step by set guide on how to make (fabricate) a 90 degree bend in metal cable tray and use

[Contact Us](#)



Fiberglass Cable Tray

Looking for durable and corrosion-resistant Fiberglass Cable Tray? Our lightweight, high-strength trays offer long-lasting performance. Order now!

[Contact Us](#)



Cable Tray 90 Degree Vertical Bend , 750 mm FRP Ladder Tray

90 degree bend FRP Cable Tray with Two 45 degree Bend. 90 Degree cable tray bend formula. 45 Degree cable tray bend formula. 750 mm FRP Ladder tray bend. Industrial

[Contact Us](#)



Cable Tray and Accessories

Manufacturer of Cable Tray and Accessories - 90 Degree Vertical Inside Bend, Cable Tray Reducer Concentric, 90 Degree Vertical Outside Bend and 90 Degree

[Contact Us](#)



SHF630SVI9012 , Bend for cable tray , T& B Cable Tray , Wire & Cable



Catalog No. : SHF630SVI9012 Description: HDG 30INW 6IND IV-90 12INRAD SLD. UPC: 785055113195 Made or assembled in Canada. Hot-dipped galvanized steel fitting 6 inches side rail

[Contact Us](#)



Make a 90 Gusset Bend in Cable Tray with Two Pieces

How to make a 90 electrical cable tray bend to measurement with a gusset of your choice. Great if you are new or just forgot how to do it, this easy to follow guide makes it so simple.

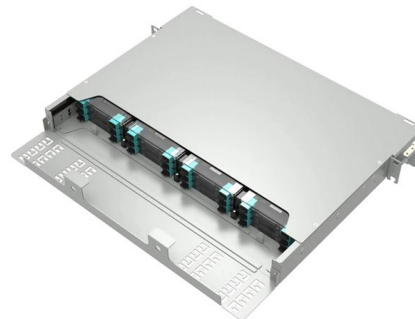
[Contact Us](#)



Make a (45-45) 90 Gusset Bend in Electrical Cable Tray In One Piece

How to make a 90 electrical cable tray bend to measurement with a gusset of your choice using one piece of tray. Great if you are new or just forgot how to do it, this easy to follow guide makes

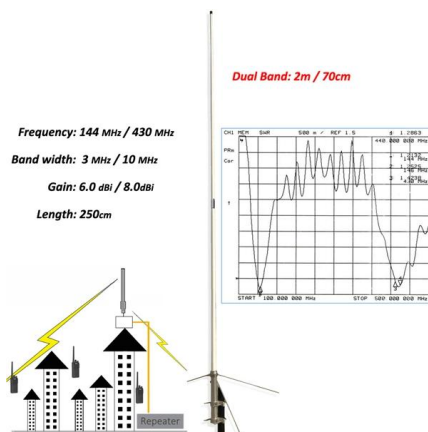
[Contact Us](#)



FRP Cable Tray 90 Degree Bend , Electrical Cable Tray Fabrication

FRP Cable Tray 90 Degree Bend , Electrical Cable Tray Fabrication Work Horizontal FRP cable tray bend formula and installation . Part-2 Vertical Bend Tutorial link o Cable Tray 90 Degree

[Contact Us](#)





Assembly Guide

Guide for making bends, tees, crosses, risers and reducers from straight sections of wire basket cable trays live at the project.

[Contact Us](#)



Ladder Type Cable Tray Vertical Inside Bend

A ladder type cable tray vertical inside bend is a fitting used to redirect cables vertically downward within a ladder cable tray system, typically at a 90-degree angle. This accessory is ideal for managing cable

[Contact Us](#)

90° vertical bend, falling 60 FT , OBO

90° vertical bend, falling, for all cable tray types of 60 mm side height. The vertical bend is pushed over the end of the cable tray and screwed tight. Fastening

[Contact Us](#)



How to make a 0-90° vertical angle for cable trays?

How to make a 0-90° vertical angle for cable trays? Elbow joint RVS is pushed inside the cable tray and attached with the included screw set. Elbow joint RVS can be

[Contact Us](#)



90° vertical bend, rising, 85 FT , OBO

90° rising vertical bend, for all cable tray types of 85 mm side height. The vertical bend is pushed over the end of the cable tray and screwed tight. Fastening

[Contact Us](#)



Free download! Cable Tray System

Revit file includes vertical bends for cable tray types according to the Solar Project assortment. A complete overview of products and a single download of all

[Contact Us](#)

Vertical Outside Bend , Ramdev Steel Industries

90° bend, Vertical Outer Bend, for all cable tray types of 50 mm side height. Including appropriate fastening material.

[Contact Us](#)



90° external vertical bend

Bending radii of special pieces take into consideration the CEI 11-17 standard, which settles the minimum bending radius according to cable's diameter; on request, we

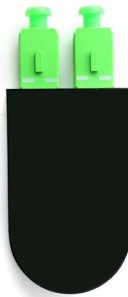
[Contact Us](#)



Trunking Cutting Techniques Guide , PDF

The document provides instructions for forming various bends and joints in electrical trunking and cable trays. It describes: 1) How to mark and cut a right-angle

[Contact Us](#)



Box Type Cable Tray Vertical Inside Bend , Pratik Cabletray System

A box type cable tray vertical inside bend is a fitting used to change the direction of a cable tray system vertically, typically at a 90-degree angle, directing cables inward. This component is ideal for

[Contact Us](#)

VERTICAL BEND in PERFORATED CABLE TRAY by Fixotech

All things considered, vertical bends--whether inward or outward and perforated--are crucial parts of cable management systems, offering a dependable and effective way to preserve the functioning and

[Contact Us](#)



Contact Us

For datasheets, pricing, or custom fiber access solutions, please visit:
<https://frindel.es>