

FTTH uses micro-module data center immersion liquid cooling





FTTH uses micro-module data center immersion liquid cooling



Liquid Immersion in the Data Center: A Modular

The current study seeks to illustrate how data center power density, efficiency, and reliability can be increased through the integration of a two-phase liquid

[Contact Us](#)

Liquid and Immersion Cooling Options for Data Centers

Learn about the future of data center cooling and how liquid cooling solutions support high-density computing and enhance performance and energy efficiency. Explore

[Contact Us](#)



An Overview Of Liquid Immersion Cooling Technology

These liquid cooling solutions can include options such as direct-to-chip and immersion cooling, both of which involve the use of a fluid to cool what

[Contact Us](#)



Solving Cooling Interconnects for Next-Gen Data

Two-phase immersion cooling utilizes coolant fluid with a low boiling point and capitalizes on the phase change from liquid to vapor to capture excess



Data Center Cooling: Microchannel, Microconvective

Explore data center liquid cooling solutions including microchannel, microconvective & immersion cooling. Learn which system is best for your

[Contact Us](#)



Liquid cooling: The next evolution in data center thermal

As data centers encounter growing demands, ranging from increased chip densities and the heightened adoption of artificial intelligence (AI) to rising

[Contact Us](#)



The immersion cooling technology: Current and future development in

Data centers have a high sensible heat load but a low latent heat load, necessitating constant cooling. Computers of the first generation were based on electron tubes and used a water

[Contact Us](#)



PowerPoint Presentation

SUMMARY Feasibility of a liquid immersion cooling technology for the network equipment, including high-end core switch and core-router with high heat-density as a hot spot in a communication

[Contact Us](#)



Evaluating immersion cooling fluids for data centers:

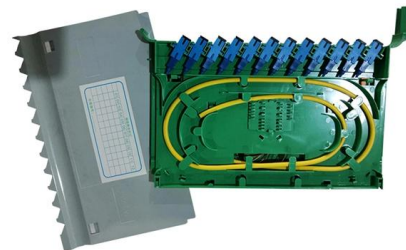
second type of immersion cooling is two-phase immersion. Like single-phase immersion, two-phase immersion cooling requires the servers to be fully submerged in a dielectric but thermally

[Contact Us](#)

Immersion cooling for modern data centers

Immersion cooling certification categories We offer certification services across three core areas of immersion cooling: liquid immersion hardware, insulating liquids and installed IT equipment. UL takes

[Contact Us](#)



AI-driven cooling technologies for high-performance data centres:

This study presents a comprehensive, system-wide review of next-generation cooling technologies, including direct liquid cooling, immersion cooling, two-phase systems, spray and jet

[Contact Us](#)



NEC Direct Liquid Cooling Technologies

These approaches often employ a two-phase liquid, which turns from the liquid into the gaseous state when in contact with hot components. The mainframes of the early 1980s also pioneered liquid

[Contact Us](#)



An introduction to liquid cooling in the data center

Various forms of liquid cooling have been around since the late 1800s when they were used to insulate and cool extra high voltage transformers. The

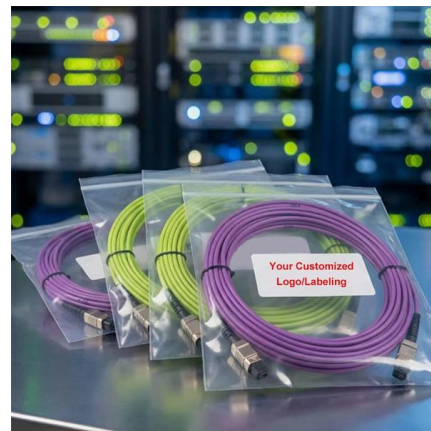
[Contact Us](#)



Disrupting Data Centre Design

This report examines the transformative potential of liquid cooling, an emerging technology that is poised to become a cornerstone of modern data centre design. We will explore the diverse approaches to

[Contact Us](#)



Liquid immersion cooling for modular and Edge data

Liquid immersion cooling is the answer. Whether you need to increase the compute density in the same footprint, add computing density in new

[Contact Us](#)





Immersion cooling systems: Advantages and deployment strategies

Data center operators aiming for an oil and natural gas-free immersion cooling liquid can use bio-based dielectric liquids as an alternative. These liquids, derived from biological waste,

[Contact Us](#)



Data Center Liquid Cooling: The AI Heat Solution

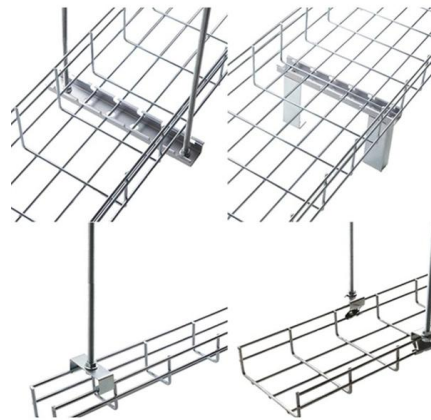
Advanced AI chips are generating more heat in data centers, necessitating improved cooling solutions. Liquid cooling is becoming a viable

[Contact Us](#)

Optimizing AI Performance with Immersion Cooled Data Centers

As a pioneer of data center liquid immersion cooling, GRC has perfected single-phase immersion technology. GRC's technology submerges servers in ElectroSafe® coolants, a specialized non

[Contact Us](#)



Liquid Cooling Data Center: DLC, Immersion, RDHx

Three main approaches exist: direct liquid cooling (DLC) with cold plates on processors, immersion cooling that submerges hardware in dielectric fluid, and rear-door heat exchangers

[Contact Us](#)

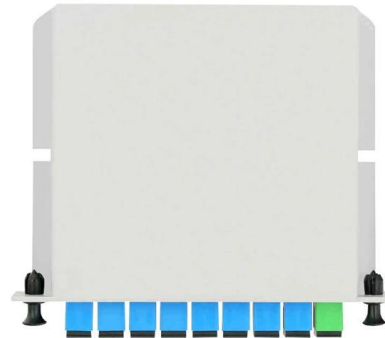
Liquid Cooling: Use Cases, Innovation, and



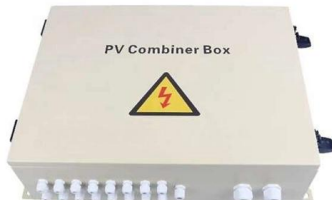
Deployment Readiness

A micro data center module can be deployed in several form factors, including 60kW, 120kW, and 600kW. Further, these integrated liquid-cooled enclosures can be stacked and operate indoors or

[Contact Us](#)



[Contact Us](#)



Immersion cooling systems: Advantages and

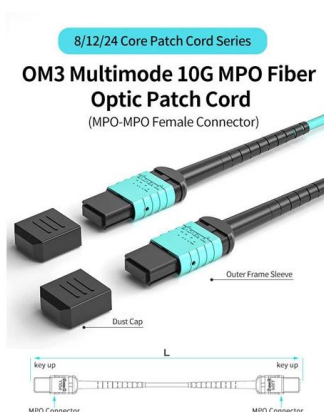
Data center infrastructure is rapidly expanding, fueled by the ongoing rise of artificial intelligence (AI) and high-performance computing (HPC) workloads. As rack

[Contact Us](#)

Advancement of Liquid Immersion Cooling for Data Centers

This paper reviews the current state and prospects of liquid immersion cooling technologies for data centers by paper analyzing.

[Contact Us](#)



Immersion Cooling for data centers: An exotic inevitability?

Data centers are getting hotter AI data centers dissipate heat using a combination of airflow, liquid circulation, and heat exchange systems that move

[Contact Us](#)



Liquid cooling of data centers: A necessity facing challenges

It covers four major liquid cooling techniques: indirect water cooling with rear door heat exchangers, direct liquid cooling using water blocks or evaporators, single-phase, and two-phase

[Contact Us](#)



Optimizing AI Performance with Immersion Cooled Data Centers

GRC's ICeraQ micro-modular platform, combined with Cisco's proven compute and connectivity infrastructure, delivers a plug-and-play solution ideal for edge deployments, data centers, and remote

[Contact Us](#)

Contact Us

For datasheets, pricing, or custom fiber access solutions, please visit:
<https://frindel.es>