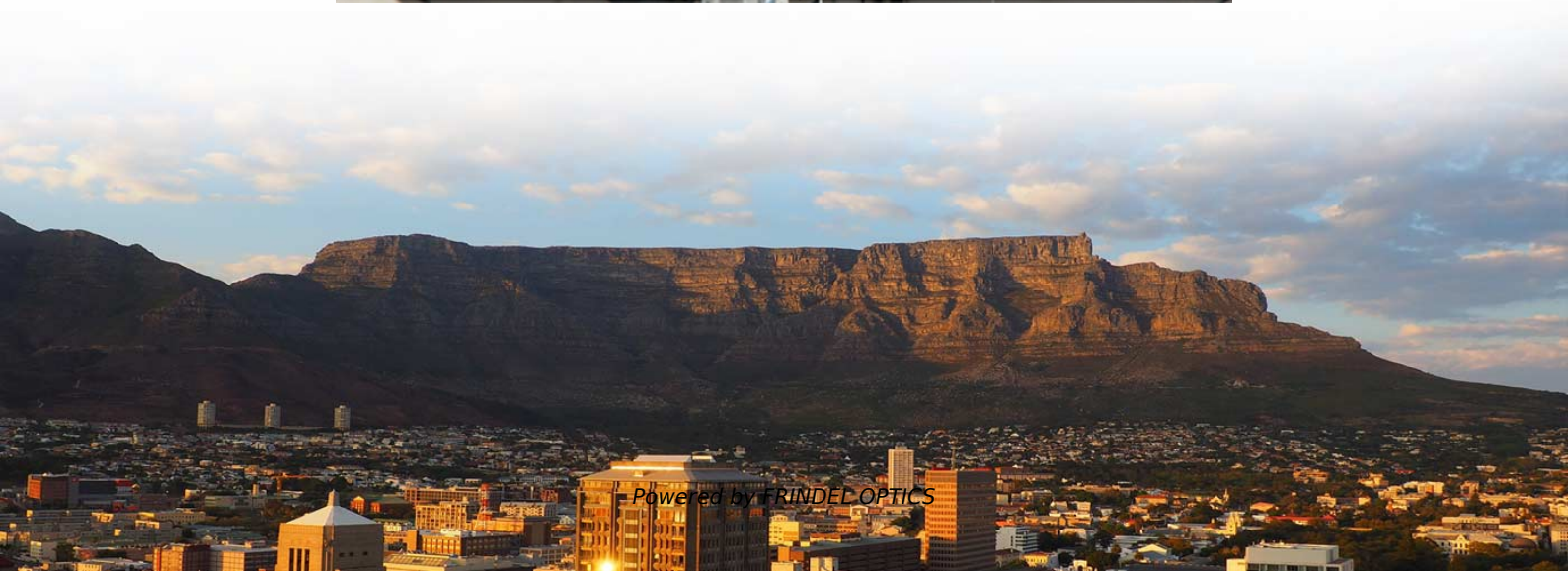


Explosion-proof distribution box connection equipment





Explosion-proof distribution box connection equipment

Ex-Junction boxes and terminal enclosures ATEX



The clip-on mounting system in connection with the CEAG explosion-protected distribution, plugs and sockets and terminal boxes renders a decisive cost reduction.

[Contact Us](#)

Terminal Box/Explosion proof electrical equipment/global certification

KHJ offers a large selection of terminal boxes and junction boxes for wiring connection in explosion hazardous areas. They are certified according to the latest ATEX and IEC EX standards.

[Contact Us](#)



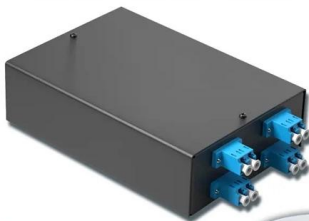
Terminal boxes , Junction boxes , Ex , Ex e , Ex d , ATEX , Explosion

Terminal boxes for safe installation in hazardous areas Safely conduct, connect and distribute energy in hazardous areas with R. STAHL's terminal boxes. We offer bespoke, custom-made terminal boxes

[Contact Us](#)

4-port 8-core LC wall-mounted fiber terminal box (empty frame)

Surface painted Scientific plate fiber Cold-rolled steel plate



Lifetime quality assurance

Free shipping

Customizable for telecommunication

Explosion-Proof Distribution Box , Product Center

Explosion-proof distribution boxes are designed to safely control and distribute electrical power in hazardous environments, preventing ignition risks.



Explosion protective components & systems , Products , ABB

Explosion protective components & systems
From its global facilities ABB manufactures a wide range of ATEX, IECEx, UL, CSA approved electrical products for hazardous area applications.

[Contact Us](#)



Explosion-Proof Junction Box for Power Cables

Explore our Junction Box for Power Cables Connection, designed for electrical heating systems in explosion hazard areas. Featuring IP66 rating, easy

[Contact Us](#)



Warom Explosion Proof Equipment , ATEX IECEx

Warom specializes in manufacturing explosion-proof electrical equipment, with products covering explosion-proof lighting fixtures, explosion-proof distribution

[Contact Us](#)

Length:33.5mm
Small-end inner diameter:4.0mm
Large-end inner diameter:6.0mm





Ex-Junction boxes and terminal enclosures ATEX

The sturdy CEAG junction boxes made of light metal are used to distribute and conduct electricity in Zone 1 and Zone 2 areas with no risk of explosion.

[Contact Us](#)



Principles for Connecting Explosion-Proof Distribution

Explosion-proof systems, especially in hazardous environments, demand a meticulous approach to ensure safety and compliance with regulations. This

[Contact Us](#)



Explosion Proof Electrical Fittings , Explosion Proof

Douglas Electrical Manufactures Explosion Proof Electrical Fittings, Explosion Proof Conduit Seal, and Explosion Proof Wire Seal for Hazardous Locations. Our

[Contact Us](#)



Atex Certified Junction Boxes, Terminals, Sockets &

Explosion Proof Junction Box / Connectors These explosion proof junction boxes / terminal boxes, plugs, sockets & connectors are for use in explosive atmospheres

[Contact Us](#)

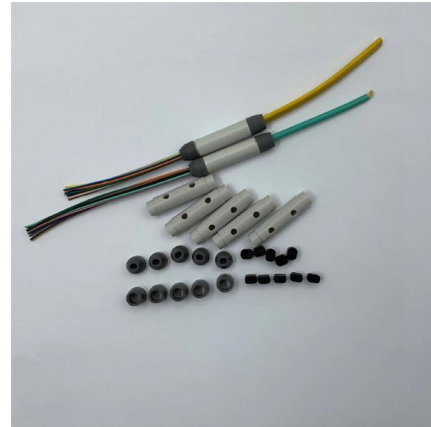
Precautions for installation of explosion



proof power distribution box

1. The wire inlet and outlet of explosion-proof distribution box should be set at the bottom of the box, not at the top, side, back or door of the box; The incoming line and outgoing line shall be

[Contact Us](#)



Ex Isolation Switch/Safety Switch/Circuit Breaker Manufacturers

CZ Electric Co., Ltd is an Explosion-proof isolation switch manufacturers and Explosion-proof safety switch, Explosion-proof circuit breaker (MCB) box factory.

[Contact Us](#)

Ex Enclosure Systems

The Ex d enclosures are capable of withstanding an explosion of the installed components, as well as protecting the components from an external explosion.

[Contact Us](#)



Explosion-Proof Electrical Distribution Boxes: Applications in

Find out how explosion-proof electrical boxes keep people and equipment safe in risky environments like oil, gas, and chemical industries !

[Contact Us](#)



BM (D)X-Series Explosion Protected Distribution Box

BM (D)X-Series Explosion Protected Distribution Box Explosion protection -IECEX (IEC) -ATEX (CENELEC,EN) -China Ex (GB) Application in hazardous area

[Contact Us](#)



IIB+H2 Explosion-proof Terminal Box

Explosion-proof terminal boxes ensure the safety of electrical equipment in these volatile environments. Hydrogen Storage and Distribution: Hydrogen is widely

[Contact Us](#)

Terminal Box/Explosion proof electrical equipment/global certification

Terminal Box KHJ offers a large selection of terminal boxes and junction boxes for wiring connection in explosion hazardous areas. They are certified according to the latest ATEX and IEC EX standards.

[Contact Us](#)



Atex Certified Junction Boxes, Terminals, Sockets

These explosion proof junction boxes / terminal boxes, plugs, sockets & connectors are for use in explosive atmospheres in compliance with the ATEX 94/9/EC

[Contact Us](#)



Explosion-Proof Junction Box for Hazardous Areas

Explore the features, working principles, and benefits of an Explosion-Proof Junction Box -- essential for safe electrical connections in hazardous

[Contact Us](#)



Explosion Proof Distribution Box & Electrical Enclosures

Durable Hexlon Explosion Proof Distribution Boxes and Electrical Enclosures, IECEx and ATEX certified for Zone 1 and Zone 2.

[Contact Us](#)

Terminal boxes , Junction boxes , Ex , Ex e , Ex d , ATEX , Explosion

Safely conduct, connect and distribute energy in hazardous areas with R. STAHL's terminal boxes. We offer bespoke, custom-made terminal boxes and terminal box combinations, as well as standard

[Contact Us](#)



GRP Ex Terminal Boxes

HTB1P terminal boxes, made of glass fibre reinforced polyester (GRP), are designed for use in explosive atmospheres: Zones 1, 2 (gases) and 21, 22 (dusts). They

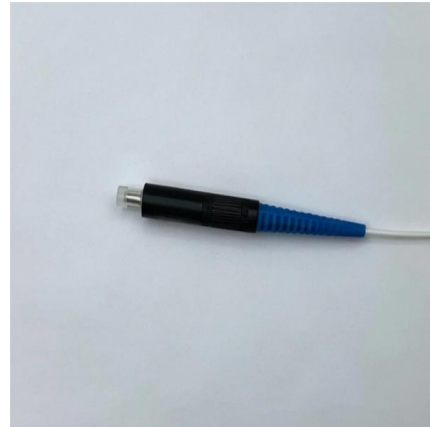
[Contact Us](#)



Explosion-Proof Distribution Boxes & Panels Manufacturer

The explosion-proof distribution box safely delivers power in hazardous zones (oil, gas, chemical plants) with rugged, spark-resistant casing--ATEX/IECEX, IP66 certified for reliable operation in explosive

[Contact Us](#)



Contact Us

For datasheets, pricing, or custom fiber access solutions, please visit:
<https://frindel.es>