

European Explosion-Proof Class I Distribution Box





Overview

The explosion proof enclosure range has ATEX, IECEx, UL Certification suitable for Zone 1, 2, 21 and 22 Hazardous Areas applications. The highlights: Up to four control elements can be mounted under a single actuator. Pepperl+Fuchs provides a specialized portfolio of Ex d (flameproof) and Ex tb (dust protection by enclosure) certified terminal boxes and junction boxes engineered for reliable use in explosion-hazardous areas. These sturdy solutions are certified according to global standards such as ATEX, IECEx. Within the EU, the ATEX directive, which determines the safe operation of plants and systems in potentially explosive atmospheres, is effective for this purpose. Increased safety enclosures, also referred to as: increased safety junction boxes, are stainless steel (or GRP materials) enclosures designed to prevent the possibility of excessive heat, the ingress of water or dust, as well as being impact resistant, thereby providing a safety factor against. The D1xJ2 is a versatile UL, cUL, IECEx & ATEX approved explosion proof junction box.



European Explosion-Proof Class I Distribution Box



HRMD91 Explosion proof Distribution Box (Ex d IIB+H2)

HRMD91 Explosion proof Distribution Box
Explosion protection to - IEC - CENELEC - NEC
Can be used in Zone 1 and Zone 2 Zone 21 and Zone 22 Class I, Zone 1

[Contact Us](#)

HRMD91 Explosion proof Distribution Box (Ex d IIB+H2)

Equipped with a specialized hinge structure which can prevent damage to the flameproof joints when opening and closing the box and greatly prolongs the

[Contact Us](#)



Custom ATEX & Explosion-Proof Enclosures , Zone 1/2

Weimiao provides project-based ATEX & IECEx explosion-proof enclosures for hazardous areas. Custom enclosures for oil, gas, chemical, and mining projects

[Contact Us](#)



Terminal and Junction Boxes (Ex d) , Explosion Protection

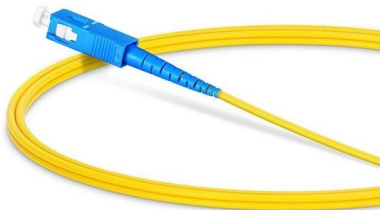
These sturdy solutions are certified according to global standards such as ATEX, IECEx, UL, and others, making them suitable for safe signal and power distribution in Zone 1, Zone 2, Zone 21, Zone 22, or



Control and Distribution Panels , Ex d , EJB Series

The enclosure series EJB forms the optimal basis for the application-specific configuration of terminal boxes, control stations as well as control and distribution

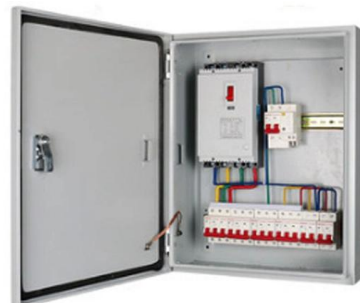
[Contact Us](#)



Explosion-Proof Ratings Guide: ATEX, Class I & II , 2M

Complete guide to explosion-proof equipment ratings -- ATEX, IECEx, NEC Class I/II Division 1/2, and Zone systems. Covers cameras,

[Contact Us](#)



Kaggle

"one reviewer mentioned watching oz episode hooked right exactly happened br br first thing struck oz brutality unflinching scene violence set right word go trust show faint hearted timid show pull punch

[Contact Us](#)





DISTRIBUTION BOARDS

Extol International are the leading suppliers of Control Panels & Distribution Boards for hazardous areas and explosive atmospheres - a comprehensive range of Explosion Proof control panels are available

[Contact Us](#)



Explosion proof distribution box standards and installation issues

I. Explosion-proof distribution box general standards Distribution box production technology indicators to meet the specifications and design requirements, and in accordance with the provisions of the

[Contact Us](#)

Explosion Proof Distribution Box & Electrical Enclosures

Durable Hexlon Explosion Proof Distribution Boxes and Electrical Enclosures, IECEx and ATEX certified for Zone 1 and Zone 2.

[Contact Us](#)



Ex Junction Boxes and Atex Enclosures - Atex Delvalle

Our explosion protection Ex enclosures and equipment are comprehensive and widely configurable. Reliable in use and convenient to install, their overall quality

[Contact Us](#)



D1xJ2 Class I/II Div 1 Ex d Junction Box 1-25-025

The D1xJ2 is a versatile UL, cUL, IECEx & ATEX approved explosion proof junction box. The robust IP66 corrosion proof aluminium LM6 enclosure and extended

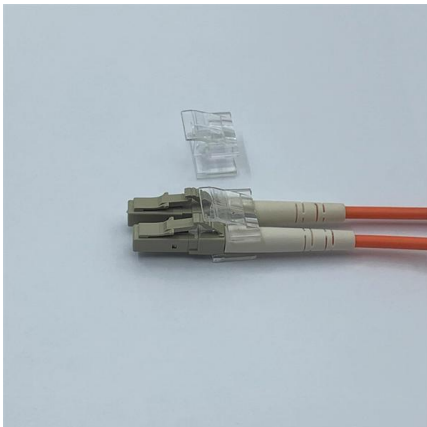
[Contact Us](#)



D1xJ2 Class I/II Div 1 Ex d Junction Box 1-25-025

D1xJ2 Class I/II Div 1 Ex d Junction Box 1-25-025
The D1xJ2 is a versatile UL, cUL, IECEx & ATEX approved explosion proof junction box. The robust IP66 corrosion

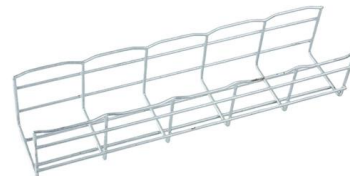
[Contact Us](#)



Ex Local Control Stations & Distribution Boxes

Atex control stations, explosion protected control units and distribution boxes made stainless steel maritime grade AISI 316L or AISI 304L. Atex Delvalle provides a

[Contact Us](#)



Terminal boxes , Junction boxes , Ex , Ex e , Ex d , ATEX , Explosion

We offer bespoke, custom-made terminal boxes and terminal box combinations, as well as standard products with short delivery times. Our products are certified for installation technologies all over the

[Contact Us](#)



ATEX & IECEx Certified Enclosures

These explosion-proof enclosures are key to increasing safety in high-risk environments. IECEx and ATEX describe general requirements for the construction, testing, and marking of electrical

[Contact Us](#)



Terminal boxes , Junction boxes , Ex , Ex e , Ex d , ATEX , Explosion

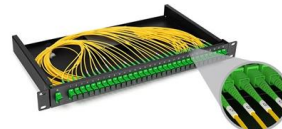
Terminal boxes for safe installation in hazardous areas. Safely conduct, connect and distribute energy in hazardous areas with R. STAHL's terminal boxes. We offer bespoke, custom-made terminal boxes.

[Contact Us](#)

Ex Equipment

ROSE Aluminium, Polyester and Stainless-Steel Ex Enclosures and Control Stations assure reliable protection for electrical distribution systems in explosion

[Contact Us](#)



European Explosion-Proof Enclosures , EX Industries

Explore EX Industries' certified European explosion-proof enclosures, designed for hazardous environments. Ensure safety and compliance with our high-quality

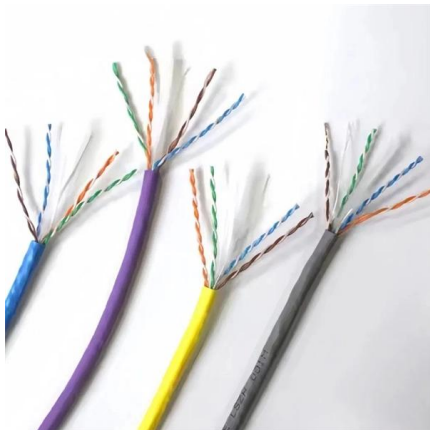
[Contact Us](#)



BXM (D)8061 Explosion proof Distribution Box

Class I, Zone 1 and ZOne 2 Class I, Division 2, Groups A,B,C,D Enclosure for a combination of modules (Ex e) Main and branch switches are operated via an

[Contact Us](#)



Ex-Junction boxes and terminal enclosures ATEX

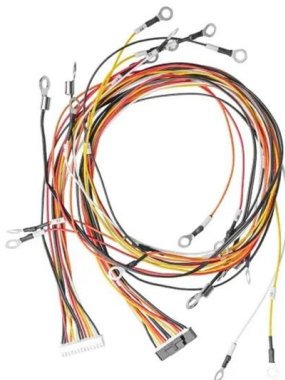
Stainless steel Ex terminal boxes - HARDO
Stainless steel Ex terminal boxes of the Polish company HARDO, are available at a competitive price and workmanship

[Contact Us](#)

Ex Enclosure Systems

These explosion-proof enclosures are the spearhead in terms of safety and provide optimum protection for your installed components against the ingress of gas, dust

[Contact Us](#)



Explosion Proof Enclosures , Complete Hazardous Area

Learn everything about explosion proof enclosures for hazardous areas--design, certification, and industrial applications with ATEX, IECEx, and Class I Div

[Contact Us](#)



DISTRIBUTION BOARDS

These are available in a range of materials including Stainless Steel, GRP & Sheet Steel from IP42 (Indoor) to IP 66 (Outdoor) Applications.

[Contact Us](#)



5 Key Factors to Consider When Selecting Explosion Proof Distribution Boxes

Selecting explosion-proof distribution boxes protects the safety of your staff in any potentially hazardous workplace. HEXLON stands out as a trusted provider of explosion-proof

[Contact Us](#)

Contact Us

For datasheets, pricing, or custom fiber access solutions, please visit:
<https://frindel.es>