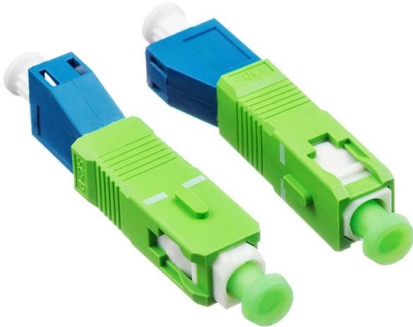


Enclosed Tray Type Cable Tray





Enclosed Tray Type Cable Tray



Cable Trays Selection Guide: Types, Features,

Cable trays are components of support systems for power and communications cables and wires. A cable tray system supports and protects both power and

[Contact Us](#)

Cable Tray Technical Guide A practical guide to product selection and

SOLID-BOTTOM CABLE TRAY Providing additional cable protection, solid-bottom cable tray is sometimes preferred to support and protect numerous small instrumentation and control cables.

[Contact Us](#)



What are the main types of cable tray?

Introduce the main types of cable tray including ladder cable tray, perforated cable tray, solid bottom cable tray and wire mesh cable tray.

[Contact Us](#)

Types of Cable Trays - Advantages, Applications and Sizes

In this article, we'll explore the most common types of cable trays, their advantages, and the cable tray sizes available to help you choose the right one for your project.



Types of Cable Trays - Advantages, Applications and Sizes

Explore the types of cable trays, their advantages, applications, and standard sizes. Learn how they improve cable management and support various industries.

[Contact Us](#)



Cable Tray Types and Sizes

What is Cable Tray Systems? An electrical cable tray is a type of containment system used to support insulated electrical cables for power distribution, control,

[Contact Us](#)



Polymer Cable Trays Types: Your Guide to Choosing Right

Explore different Polymer Cable Trays Types. We break down solid, hollow, and steel-lined options for your cable management needs. Find the best fit.

[Contact Us](#)





Cable Tray Systems

MP Husky Manufactures the following types of Cable Tray Systems: Aluminum, Mill Galvanized Steel, Hot-Dipped Galvanized Steel, Stainless Steel, Fiberglass,

[Contact Us](#)



Total Power Box Solutions, Inc.

Our product designs on Switchgear, Panelboard, Busduct, Cable Tray, and ECB are industry standard of highest quality.

[Contact Us](#)

What Is A Cable Tray? 5 Types Of Cable Trays

A cable tray is a structural system used to support and manage electrical cables in various settings, such as industrial, commercial, and residential environments.

[Contact Us](#)



Everything You Need to Know About Cable Trays , Cable Trays

Discover the different types of cable trays, their many benefits when used in electrical wiring and network cabling, installation processes, and essential maintenance tips for keeping your

[Contact Us](#)



Types of Cable Containment Systems: Trays, Trunks,

Trays are ideal for managing large volumes of cables in open settings, trunking provides neat enclosed routing in visible areas, and conduits deliver

[Contact Us](#)



7 Types of Cable Trays: How to Choose the Right One

Selecting the correct cable tray type is not arbitrary--it depends on a combination of cable characteristics, environmental conditions, and installation

[Contact Us](#)



B-Line series Cable Tray Design Considerations

Our wind certification report provides you with list of acceptable B-Line series cable tray supports, fittings and covers based off of the environmental conditions, cable loading, and type of cable tray in your

[Contact Us](#)



Enclosed Cable Tray, Industrial Enclosed Cable Tray

Enclosed Cable Tray NewReach offers Enclosed Cable Tray solutions designed to create a fully protected pathway for electrical cables. These enclosures effectively

[Contact Us](#)

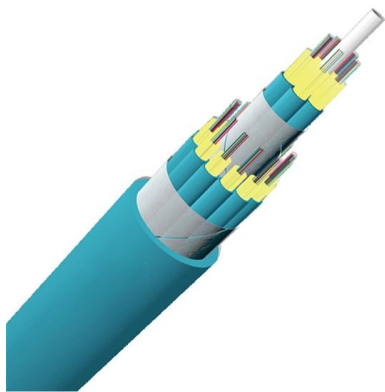




Cable Tray Type Selection

The only reason to select a ventilated trough cable tray over a ladder type cable tray is aesthetics. No drooping of small cables is visible. The ventilated trough cable tray does provide more support to the

[Contact Us](#)



Enclosed Cable Tray

NewReach offers Enclosed Cable Tray solutions designed to create a fully protected pathway for electrical cables. These enclosures effectively shield cables from

[Contact Us](#)

7 Types of Cable Trays: How to Choose the Right One

Cable tray systems are engineered support structures designed to route, support, and protect insulated electrical cables used for power distribution,

[Contact Us](#)



GUIDE CABLE TRAYS TECHNICAL

NEMA VE 1-2017 Specifies requirements for metal cable trays and associated fittings designed for use in accordance with the rules of Canadian Electrical Code, Part I and the National Electrical Code®

[Contact Us](#)

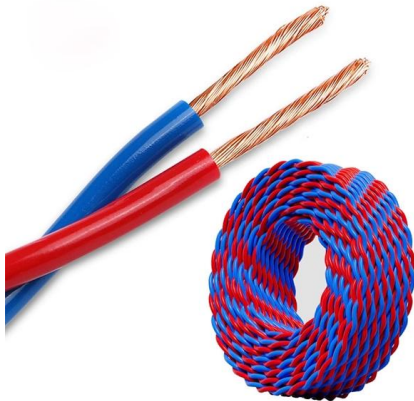




Cable Tray Technical Guide A practical guide to product selection and

Cable tray is considered to be a system. It must provide continuous support for cables, and the electrical continuity of the cable tray system must be maintained.

[Contact Us](#)



Types of Cable Trays: Ladder, Perforated, Basket, Solid

Their enclosed design enhances security, prevents buckling or sagging, and helps maintain safe cable temperatures even in confined spaces.

[Contact Us](#)

Types of Cable Containment Systems: Trays, Trunks,

Discover the main types of cable containment systems--trays, trunking, and conduits--and learn how to choose the right solution for safe,

[Contact Us](#)



Cable Tray vs Cable Basket vs Cable Ladder vs Cable

Compare cable tray, basket, ladder & trunking systems. Learn the pros, cons, and best uses for each type, with links to our UK product ranges.

[Contact Us](#)



Cable Tray Types and Sizes

Types of Cable Trays and Sizes Explore various cable tray types and sizes for electrical installations. Learn about ladder, perforated, solid-bottom, wire mesh,

[Contact Us](#)



Channel Cable Tray Is Fully Enclosed to Protect Cables

Channel cable trays have powder coated, hot-galvanized and electro galvanized surface mainly used to support computer cables, communication cables,

[Contact Us](#)

Contact Us

For datasheets, pricing, or custom fiber access solutions, please visit:
<https://frindel.es>