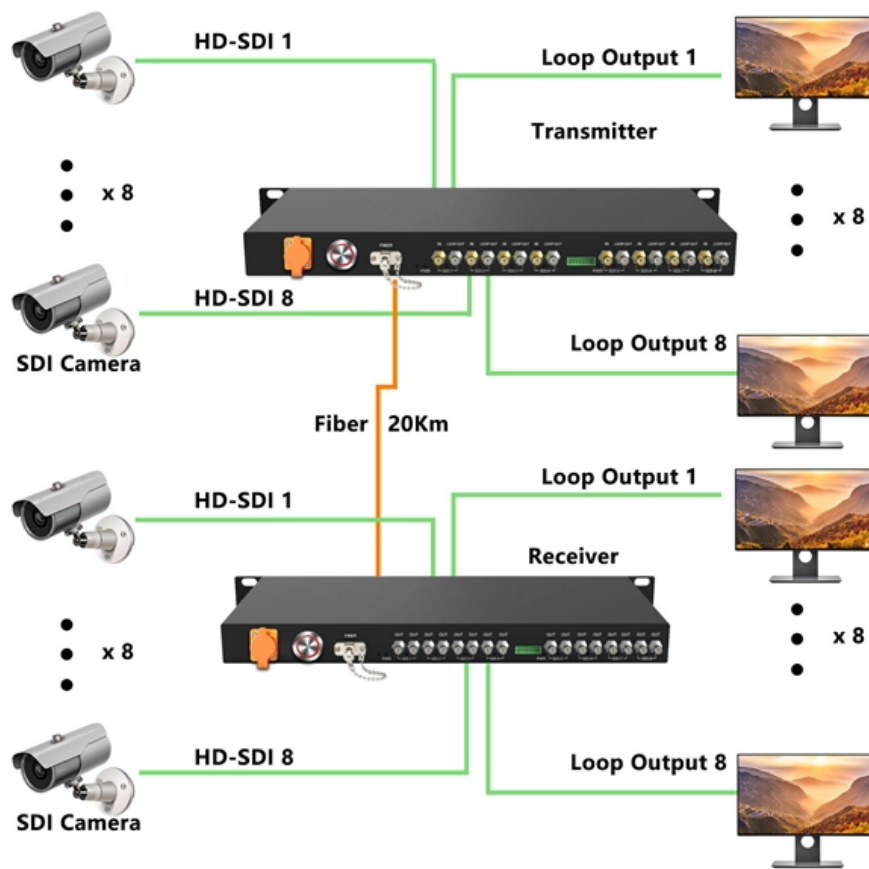


Enclosed High Voltage Busbar





Enclosed High Voltage Busbar



Flexible tiered busbar enclosure for high current application

The arrangement of busbars in this enclosure can be tailored, allowing a variety of configurations suitable for inflexible, higher-current carrying cables. These are housed within a 316L (1.404)

[Contact Us](#)

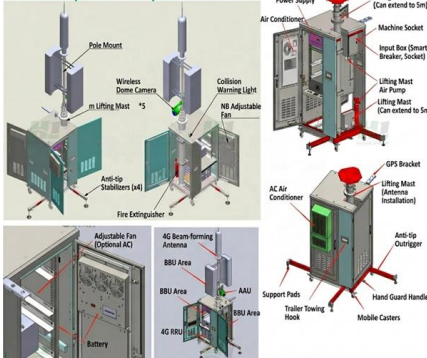
Busbar enclosure for temporary power & high current

Suitable for connectors over 400mm², the enclosure can connect three-phase plus neutral supplied with up to six conductors per phase. Manufactured from 316L

[Contact Us](#)



Product Composition Description



HV Junction Boxes Guide 11kV-66kV Enclosures , Abtech

The range includes 11kV, 33kV and 66kV junction boxes, high-current busbar enclosures, submersible termination enclosures and fibre optic integration

[Contact Us](#)

Vertiv(TM) PowerBar HPB

Vertiv(TM) PowerBar HPB is a 1000V totally encased, non-ventilated and low impedance busbar. HPB sandwich construction range has been engineered for

[Contact Us](#)



Why Renewable Energy Plants Are Replacing Traditional Power

High-voltage bus ducts -- represented by the Renyun high-voltage Common Box Enclosed Busbar System-- directly address and resolve the core pain points of cables: voltage drop, heat buildup,

[Contact Us](#)



Busbar System , KX electrical busbar systems , EAE

Power Busbar System is a modular, electrical transmission and distribution system created by insulating the current carrier, which consists of Aluminium or Copper

[Contact Us](#)



Busbar Trunking vs Cables: Smarter LV Power Distribution

Busbar trunking systems offer faster installation, better space use, and higher energy efficiency compared to traditional cables. Discover the ideal LV distribution choice.

[Contact Us](#)





Busbars and Connectors in HV and EHV installations

In indoor medium-voltage (MV) and low-voltage (LV) installations--particularly where high currents and limited space coexist--busbars are often enclosed in metallic

[Contact Us](#)



Busbars and Connectors in HV and EHV installations

In indoor medium - voltage (MV) and low - voltage (LV) installations, where high currents are involved and space is at a premium, insulated busbars and trunking systems are often utilized. In these

[Contact Us](#)



BUS BARS

Our bus bar insulation system offers an alternative to cables routed in parallel and enclosed metal bus bar trunking, especially for the transmission of high currents

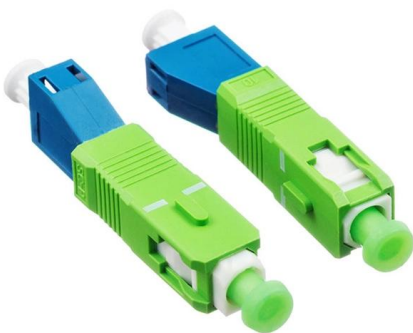
[Contact Us](#)



Flexible Busbar Solution for High Current Density Applications

Testing a metal enclosed bus system, Agarwal Specification for nVent ERIFLEX Flexbus Insulated Flexible Busbar System or engineering approved equivalent Skin Effect, Proximity Effect

[Contact Us](#)



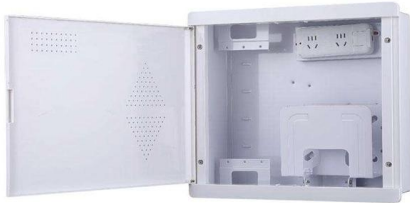
Busbars for High-Voltage Power Systems:



The Key to

Busbars are indispensable components of high-voltage power systems, ensuring efficient and safe power transmission. Selecting and utilizing

[Contact Us](#)



Busbar Size Chart: Types, Current Rating, Materials

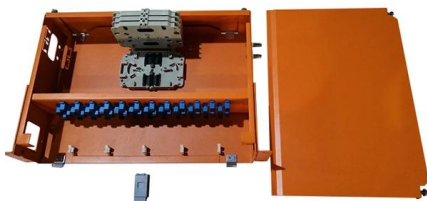
Busbar size chart with types, current ratings, and materials guide. Learn standard dimensions, copper/aluminum selection, and electrical load capacity

[Contact Us](#)

Busbars and Connectors in HV and EHV installations

Isolated busbars typically consist of copper or aluminium flat bars (one or more per phase, sized according to current requirements), with each phase enclosed in a

[Contact Us](#)



High Voltage 11kV Enclosure, HV Enclosures, Zone 2

Abtech Busbar Box high voltage (HV) cable junction boxes are manufactured from 316L stainless steel and used primarily for jointing cables or as a connection box,

[Contact Us](#)



Busbars and Connectors in HV and EHV installations

Insulated Busbars & Trunking Systems In indoors MV and LV installations, namely with high currents and space available is low, busbars may be surrounded by

[Contact Us](#)



High-voltage busbar

Find your high-voltage busbar easily amongst the 6 products from the leading brands (LEONI, TELEDYNE, HLC,) on DirectIndustry, the industry specialist for your

[Contact Us](#)



Busbar enclosure for temporary power & high current

Hazardous Area Busbar enclosure for 3kA
Designed to accommodate inflexible high current cables, the BusBar Box can safely terminate conductors up to 3200 amps

[Contact Us](#)



GRL Low-Voltage Enclosed Busbar Systems

Modern power distribution increasingly relies on modular busbar systems for efficient and safe electrical wiring. A low-voltage Enclosed busbar system uses conductive bars (instead of

[Contact Us](#)





Busbar Design in Switchgear: Key Principles & Best Practices

Busbar design in switchgear ensures safe, reliable power distribution by balancing current capacity, thermal performance,

[Contact Us](#)



Busbars , Busbars manufacturers & supplier , Eaton

Busbars are metal bars that can be composed of numerous alloys but are most commonly copper or aluminum. Typical busbar applications include switchgear,

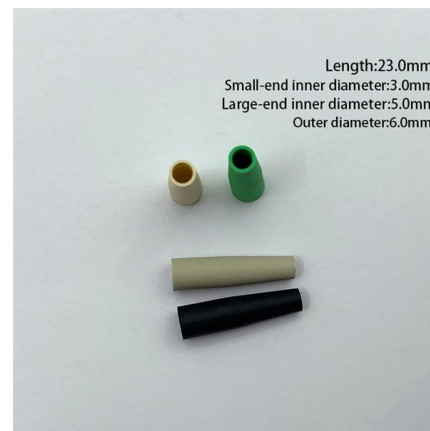
[Contact Us](#)



Abtech Busbar Box Hazardous Area (ATEX) Electrical

The intelligent design of the Abtech Busbar Box range allows high voltage cables to enter the electrical enclosure and to be terminated onto the busbar without having

[Contact Us](#)



High Voltage Busbars

To connect various high voltage (HV) components to the HV system, we also deliver a wide variety of busbars. In cooperation with the customer, these can also feature our Bus Bar Insulation Tubing (BBIT).

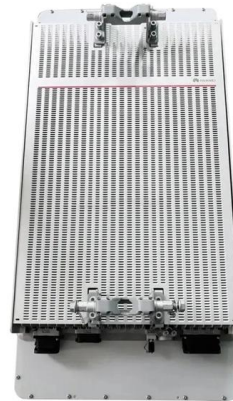
[Contact Us](#)



Closed busbar systems -A unique power distribution

What is an Enclosed Busbar System? An enclosed busbar system is a highly efficient and organized method of electrical distribution, which involves the use of

[Contact Us](#)



Contact Us

For datasheets, pricing, or custom fiber access solutions, please visit:
<https://frindel.es>