

# **Enclosed Cold Aisle in Computer Room Tonga**





## Overview

---

In order to improve the cooling effect, two types of aisle enclosure can be adopted: one is full enclosed cold aisle, another is semi-enclosed cold aisle which is only enclosed from two sides with the lar.



## Enclosed Cold Aisle in Computer Room Tonga

---



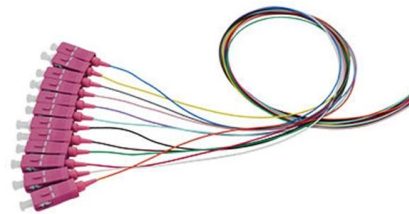
### Hot Cold Aisle Containment

The goal of a hot aisle/cold aisle containment configuration is to conserve energy and lower cooling costs by managing air flow. Hot aisle/cold aisle containment

[Contact Us](#)

### Hot/Cold Aisle Containment , Data Center Containment

Then observe the unique layout and architecture of each computer room to discover conditions that make hot aisle or cold aisle containment preferable. With



[Contact Us](#)



### FOCUSED COOLING USING COLD AISLE CONTAINMENT

Similar to CAC with external cooling, CAC with internal cooling has a focused cooling approach and contains the cold air by enclosing the cold aisle using top ceiling panels and doors at the end of the

[Contact Us](#)

### The pros and cons of hot and cold aisle containment

With data centres and computer server rooms becoming larger and more numerous companies are often faced with a decision: what is most suitable for their



### Hot and Cold Aisle , Effective Aisle Containment

Hot Aisle Containment The objective of the hot aisle containment data center is to enclose hot air masses and redirect them further to cooling systems.

[Contact Us](#)



### Aisle Containment Systems for Hot & Cold Aisle Solutions

Cool Shield Aisle containment solutions reduces server row temperatures in active data centers. Learn more about the benefits of hot and cold containment.

[Contact Us](#)

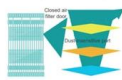
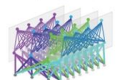

Length:33.5mm  
Small-end inner diameter:4.0mm  
Large-end inner diameter:6.0mm



### What are hot and cold aisles in the data center?

Hot and cold aisles in the data center are part of an energy-efficient

[Contact Us](#)

All-Optical Backplane	Many-Degree WSS	Digital Optical Layer
 <p>→ Zero fiber connections at the optical layer, three layers of dual-polar design, and stable routing for 25 years.</p> <p>→ Innovative multi-level dustproof and optical port alignment technologies, ensuring high reliability.</p>	 <p>→ 32 degrees, non-blocking flexible grooming.</p> <p>→ 32 Channels, OA-free, high reliability, 2x wavelength dropping efficiency compared with traditional boards.</p>	 <p>→ Use of OFDM pilot tone and high-precision wavelength monitoring technologies to visualize the fiber quality, wavelength resources, and performance of the ODC system, achieving digital ODM.</p>



## Design of Cold and Hot Aisle Isolation in Enclosed Computer Room of

The airflow organization in the equipment room completes the isolation of cold and hot aisles, which maximizes energy efficiency and achieves the purpose of energy conservation and emission reduction.

[Contact Us](#)



## Data Center Containment: Types, Benefits & Challenges

The air from the enclosed hot aisle is returned to cooling equipment via a ceiling plenum or duct work, and then the conditioned air enters the data

[Contact Us](#)

## How to Make the Right Choice? Comparison between the Enclosed

The most talked-about topic in the industry regarding the hot and cold aisle system is: "Should we arrange the enclosed cold aisle or the enclosed hot aisle?" So, in practical cases, how

[Contact Us](#)



## Hot and Cold Aisle Containment: What You Need to Know

Hot aisle containment systems isolate the hot aisle using a similar enclosure system to that of a cold aisle with a sealed door for access. This

[Contact Us](#)



## Data Centre Cooling: Hot Aisle and Cold Aisle Design

The hot aisle/cold aisle configuration ensures a consistent supply of cool air, reducing the likelihood of equipment failures due to overheating. Better airflow

[Contact Us](#)



## A Guide to Hot and Cold Aisle Containment for Optimizing Server Room

Training and Awareness The hot and cold aisle strategy is a proven method for improving cooling efficiency and reducing energy consumption in data centers. By carefully planning the layout of

[Contact Us](#)

## Hot And Cold Aisle Containment For Data Center

Design Features of Typical Containment System  
A typical Cold Aisle Containment system features enclosed cold aisles with doors at each end, a

[Contact Us](#)



## Data Center Hot/Cold Aisle Containment Systems , Eaton

An aisle containment system is a simple way to improve cooling efficiency in hot aisle/cold aisle rack configurations. Essentially creating a room within the aisle,

[Contact Us](#)



### Enclosed aisle effect on cooling efficiency in small scale

Computer room's temperatures of full enclosed hot aisle are lower than that of full enclosed cold aisle. So the former has a slight advantage, but

[Contact Us](#)



### Cold Aisle Containment in Data Centers , Subzero

With cooling provided through a raised floor, this cold aisle containment project uses rigid wall panels in conjunction with the Polar Cap 2 roof system to provide

[Contact Us](#)

### Hot/Cold Aisle Containment , Data Center Containment

AZE offers a wide range of partial and total containment solutions that can accommodate hot aisle containment, cold aisle containment and rack-based heat

[Contact Us](#)



### Hot and Cold Aisle Containment Systems: How They

Hot aisle containment (HAC) and cold aisle containment (CAC) are the most efficient ways of preventing your servers from overheating and these

[Contact Us](#)

### Optimizing Data Center Cooling for Energy



Disadvantages of Cold Aisle Containment Hotter Overall Room Temperature: The data center space outside the contained aisles becomes the

[Contact Us](#)



### Explore hot and cold aisle containment for your data center

Hot and cold aisle containment can help you maintain the best air flow, temperature and humidity in the data center to keep servers running efficiently.

[Contact Us](#)



### Aisle Containment

Open Aisle Containment Traditional open aisle data centres use perimeter PAC (precision air conditioning) or CRAC (computer room air conditioning) units to

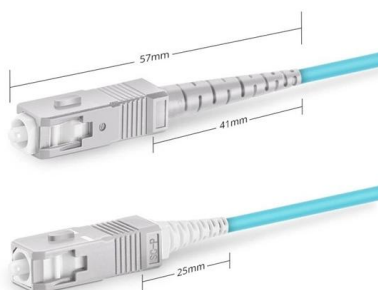
[Contact Us](#)



### Data Center HVAC Systems

Learn how Data Center HVAC Systems work using cold and hot aisle strategies and air cooled versus liquid cooled IT equipment racks.

[Contact Us](#)



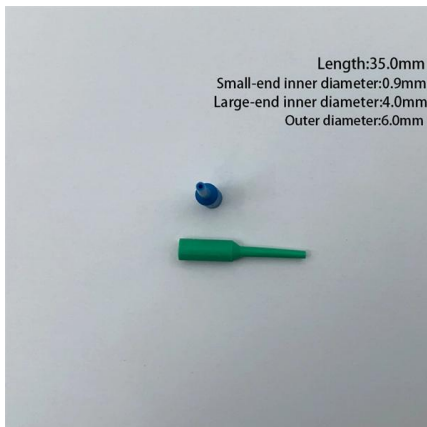
Simplex SC UPC



## Hot & Cold Aisle Containment Explained , AMCO Guide

Learn the science behind hot and cold aisle containment and how it improves airflow management, cooling efficiency, and performance in modern data centers.

[Contact Us](#)



### Hot Aisle Containment vs. Cold Aisle Containment:

Assuming a computer room is configured in such a way that either is an option, hot aisle containment may be seen as the better option because it has

[Contact Us](#)

### Hot Aisle vs. Cold Aisle Containment for Data Centers

Hot Aisle Containment vs. Cold Aisle Containment The goal of hot and cold aisle containment is very similar, even if they are entirely different

[Contact Us](#)



### Aisle Containment Systems From EDP Europe , Data

With 15 years of experience in supplying and installing aisle containment solutions, EDP designs, manufactures, and installs bespoke Hot & Cold Aisle Containment

[Contact Us](#)





## Hot and Cold Aisle Containment: What You Need to

Aisle containment is a physical means of separating hot (exhaust) and cold (supply) air. It can be accomplished via thoughtful room design, cabinet

[Contact Us](#)



## Optimizing Data Center Cooling: The Power Of Hot And

Discover how to optimize your data center cooling system with hot and cold aisle containment. Learn about the assessment, design, installation, and

[Contact Us](#)

## Contact Us

---

For datasheets, pricing, or custom fiber access solutions, please visit:  
<https://frindel.es>