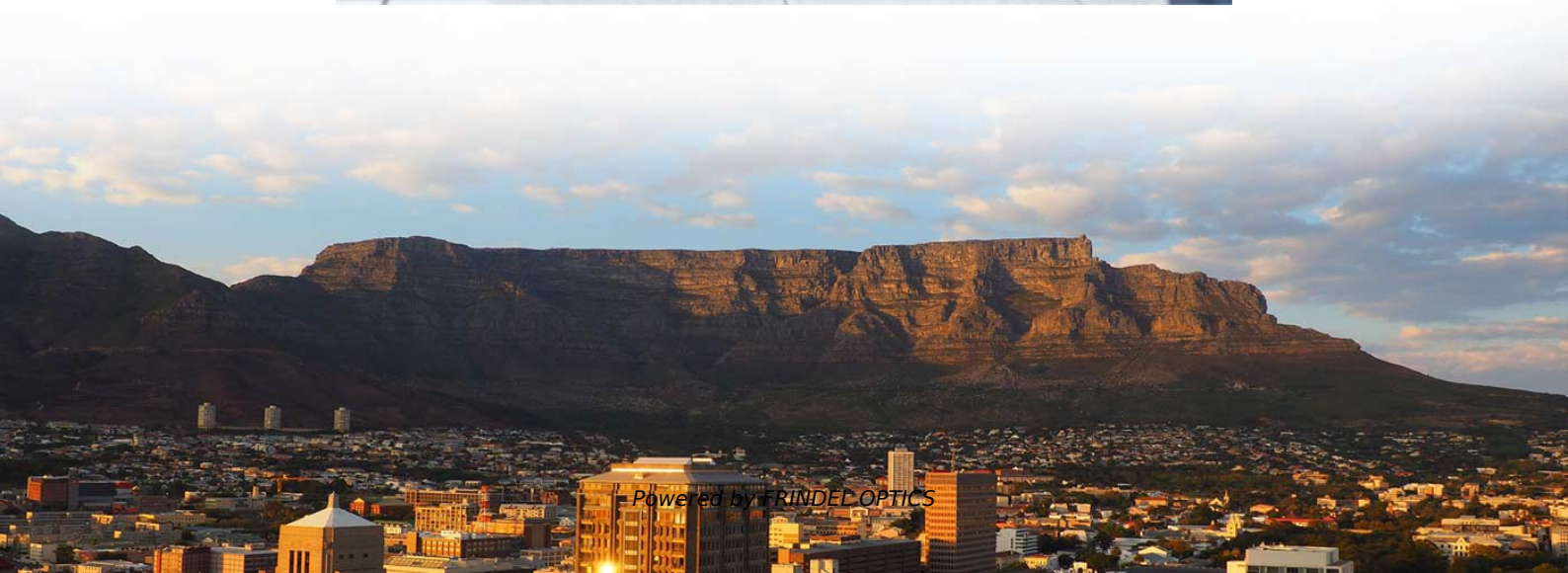


ESCON Connector Upgrade Version Manufacturer





ESCON Connector Upgrade Version Manufacturer



ESCON2 Communication Guide

ESCON2 Servo Controllers Communication Guide
CCMC , Edition 2025-06 , DocID rel12892

[Contact Us](#)

ESCON, ESCON2 product line - maxon Support

ESCON, ESCON2 product line ESCON2: Getting started and some insights ESCON2: What makes it so special? ESCON: Export / Upload of the configuration in an *.edc file ESCON EC-S: Applications and

[Contact Us](#)



ESCON Module 50/4 EC-S Firmware Version «Readme»

ESCON devices are shipped with the latest firmware version available. New versions may feature additional or enhanced functionality, as well as improved safety-relevant functions, which might not

[Contact Us](#)

motor product overview , maxon group

The ESCON Module 24/2 is a small-sized, powerful 4-quadrant PWM OEM servo

[Contact Us](#)



Technical Support - maxon Support

ESCON2: What makes it so special? MACS: How can I update the firmware? MACS: Export of the diagnostic report? How to connect a cable's shielding to Earth potential? maxon Controllers with

[Contact Us](#)



ESCON2 Compact 60-30 Hardware Reference

These tables provide information about the hardware connectors, their corresponding wired signals, the assigned pins, and details regarding the prefab cables that are available.

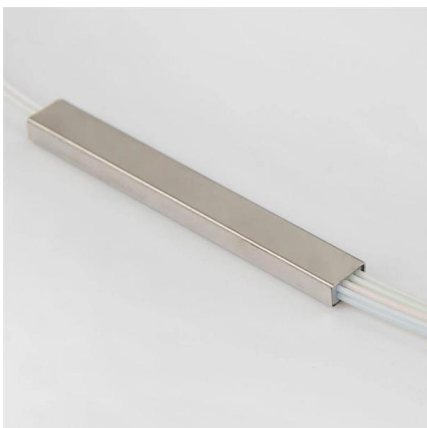
[Contact Us](#)



ESCON Module 50/4 EC-S Hardware Reference

The ESCON Module Motherboard Sensorless (subsequently named ESCON Module MoBo) is available as an alternative to developing an own motherboard. All required connections are already in place

[Contact Us](#)

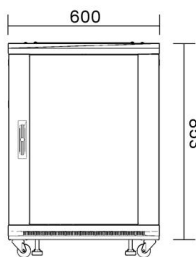
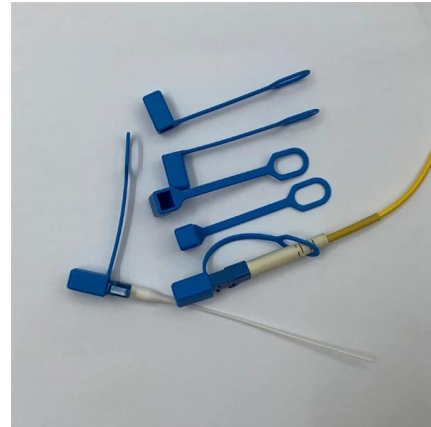




ESCON Firmware-Version «Readme»

Die Funktionalität von ESCON-Geräten wird durch das interne Betriebssystem (die sogenannte Firmware) festgelegt. Die Firmware unterliegt der kontinuierlichen Weiterentwicklung als Teil eines

[Contact Us](#)



ESCON Setup «Release Notes»

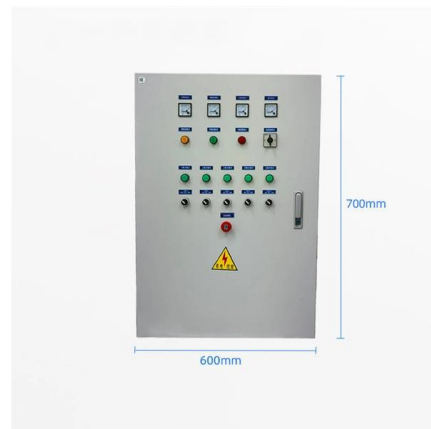
ESCON Studio 2.0 Revision 2 Configuration «Enable CW» and «Enable CCW» corrected. «Controller Monitor» does no longer crash while clicking graphical control elements.

[Contact Us](#)

ESCON Setup «Release Notes»

Edition 1 Revision 1 (2011-11) ESCON Studio 1.0 «Controller Monitor» does no longer crash while clicking Revision 2 graphical control elements.

[Contact Us](#)



ESCON Firmware-Version «Readme»

Die Funktionalität von ESCON-Geräten wird durch das interne Betriebssystem (die sogenannte Firmware) festgelegt. Die Firmware unterliegt der kontinuierlichen Weiterentwicklung als Teil eines

[Contact Us](#)



ESCON Firmware Version «Readme»

Note: Before downloading a new version, you must check for its compatibility with the hardware version you are currently using! Consult maxon motor if you are in doubt. The currently used versions of

[Contact Us](#)



ESCON Firmware Version «Readme»

The currently used versions of both, firmware and hardware, can be read out from the device using «ESCON Studio». Earlier versions are available on request. To install a new firmware version, use

[Contact Us](#)



ESCON2 Communication Guide

ESCON2 Servo Controllers are considered as partly completed machinery according to EU Directive 2006/42/EC, Article 2, Clause (g) and are intended to be incorporated into or assembled with other

[Contact Us](#)



ESCON2: Firmware Version Readme

ESCON2 devices are shipped with the latest firmware version available. New versions may feature additional or enhanced functionality as well as improved safety-relevant functions, which might not be

[Contact Us](#)

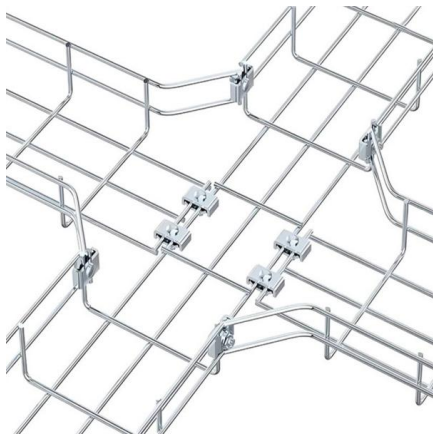
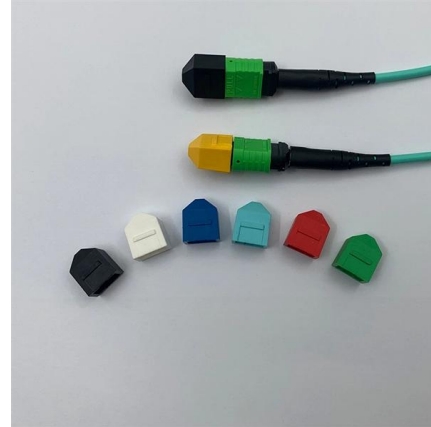




ESCON2: Firmware Version Readme

ESCON2 devices are shipped with the latest firmware version available. New versions may feature additional or enhanced functionality as well as improved safety-relevant functions, which might not be

[Contact Us](#)



ESCON Firmware Version «Readme»

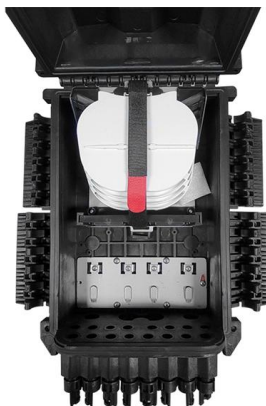
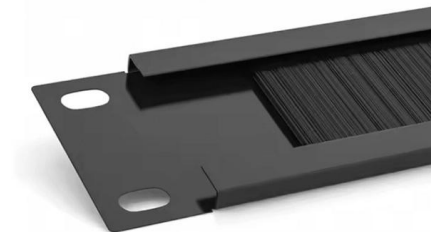
ESCON devices are shipped with the latest firmware version available. New versions may feature additional or enhanced functionality, as well as improved safety-relevant functions, which might not

[Contact Us](#)

ESCON Fiber Patch Cable

ESCON Fiber Optic Patch Cable ESCON fiber optic cables are available with both single mode and multimode versions; these fiber cables are specially used for IBM ESCON systems. The cable is

[Contact Us](#)



ESCON Setup «Release Notes»

Edition 4 Revision 2 (2013-05) ESCON Studio 2.0
Revision 2 Configuration «Enable CW» and
«Enable CCW» corrected.

[Contact Us](#)



ESCON Firmware-Version «Readme»

ESCON-Geräte werden mit dem neusten Firmwarestand ausgeliefert. Neue Versionen können zusätzliche oder erweiterte Funktionalität beinhalten oder über verbesserte sicherheitsrelevante

[Contact Us](#)



ESCON Feature Comparison Chart

ESCON Feature Chart The ESCON servo controllers are small-sized, powerful 4-quadrant PWM servo controller for the highly efficient control of permanent magnet-activated DC motors. The featured

[Contact Us](#)

ESCON 50/5 Firmware Version «Readme»

ESCON devices are shipped with the latest firmware version available. New versions may feature additional or enhanced functionality, as well as improved safety-relevant functions, which might not

[Contact Us](#)



ESCON2: Firmware Specification

Rather than providing the thermal time constant of the winding τ_{th} , the motor manufacturer may provide the peak current I_{peak} and the peak current duration T_{peak} .

[Contact Us](#)



Contact Us

For datasheets, pricing, or custom fiber access solutions, please visit:
<https://frindel.es>