

# **ESCON Connector Energy-Saving Overseas Warehouse Sample**





## ESCON Connector Energy-Saving Overseas Warehouse Sample

---



### Epoxy & Polish, Quick Termination Fiber Optic Connectors

Traditional epoxy & polish connectors, as well as quick termination connectors such as Corning Unicam, 3M Hot Melt, FIDEL Splice-On, etc. SC, LC, ST, FC, SMA, MTRJ

[Contact Us](#)

### ESCON Enerji A.S. , LinkedIn

ESCON Enerji A.S. , 9,577 followers on LinkedIn. Sustainable Energy Efficiency Esco4Zero , ESCON Energy, founded in 2004 as the first Turkish ESCO and accredited in 2009 as Energy Efficiency

[Contact Us](#)



### Chapter 3.7

3.7 ESCON The Enterprise Systems Connection (ESCON) is a I/O switch point-to-point technology that provides bidirectional serial bit transmission over two optical

[Contact Us](#)

### ESCON2 EB Micro with ESCON2 Micro 60/50 Hardware Reference

It has industrial connectors compatible with maxon prefab cables. However, it is not for regular use. The ESCON2 Micro 60/5 (P/N 809631) is a small, powerful 4-quadrant PWM Servo Controller. Its high



**[file:///M:/Marketing/ProductCatalog/Patchcords\\_ESCON.htm](file:///M:/Marketing/ProductCatalog/Patchcords_ESCON.htm)**

The ESCON\* architecture was developed to improve connectivity between mainframe, its peripherals, and other networks. The connector system is a retractable shroud duplex meeting IBM\* requirements.

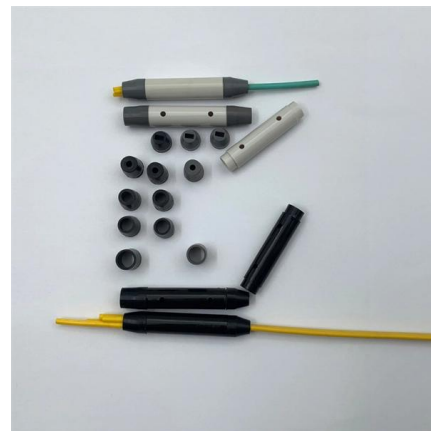
[Contact Us](#)



## ABOUT US

ABOUT US As a leading company in the energy efficiency sector, ESCON is committed to customer satisfaction and environmental responsibility. By adhering to quality, occupational health, and safety

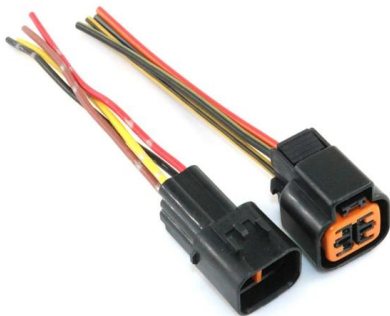
[Contact Us](#)



## What is ESCON? , Webopedia

Short for Enterprise Systems Connection, or Enterprise Systems Connectivity, an IBM fiber optic connection technology that interconnects S/390 mainframe computers, workstations and

[Contact Us](#)





## Enterprise Systems Connection (ESCON) Architecture-System overview

This paper serves as an introduction to a wholly new IBM data processing interconnection system called Enterprise Systems Connection (ESCON(TM)) Architecture(TM). Utilizing state-of-the-art fiber optic

[Contact Us](#)



## ESCON Module 50/5 Hardware Reference

The ESCON Module 50/5 is a small-sized, powerful 4-quadrant PWM servo controller for the highly efficient control of permanent magnet-activated brushed DC motors or brushless EC motors up to

[Contact Us](#)



## Escon Enerji , Low Carbon Hero Award

ESCON Energy, Turkey's first and only global energy services company, received the "Energy Efficiency and Decarbonization Project with

[Contact Us](#)



## ESCON Overview

ESCON 50/5 ESCON 70/10 Depending on the ESCON variant, the following motor types can be operated - DC motor: Permanent-magnet DC motor - EC motor: Brushless, electronically commu

[Contact Us](#)

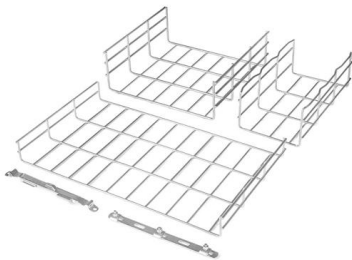
## Host adapters, cables, distances, and



## specifications for ESCON

Learn about host adapters, cables, distances, and specifications for ESCON adapters on System z hosts.

[Contact Us](#)



## ESCON2 Communication Guide

PDO configuration can be done most easily in the CANopen Wizard in Motion Studio. Without the Motion Studio, the following section explains how the configuration can be carried out step-by-step.

[Contact Us](#)

## ESCON

ESCON (Enterprise Systems Connection) is a data connection created by IBM, and is commonly used to connect their mainframe computers to peripheral devices such as disk storage and tape drives.

[Contact Us](#)



## FICON (Fibre Connection Channel): 15 Years of Mainframe I/O

In 1998, IBM introduced FICON channels for enhanced I/O connectivity and performance for their 9672 G5 processors, delivering significant capability when compared to its predecessor, ESCON. Let's not

[Contact Us](#)



## Enterprise System Connectivity (ESCON) channel

In order to accommodate parallel channel-attached control units and devices, the ESCON conversion mode allows communication from an ESCON channel to parallel channel-attached control units. The

[Contact Us](#)



### About: ESCON

ESCON (Enterprise Systems Connection) is a data connection created by IBM, and is commonly used to connect their mainframe computers to peripheral devices such as disk storage, tape drives and

[Contact Us](#)

### ESCON Patchcord

ESCON Series duplex fiber optic interconnect products are fully compatible with ESCON I/O interfaces as defined in IBM document SA22-7202-00. The Enterprise Systems Connection Architecture

[Contact Us](#)



### ESCON host adapters and cables

These cables have a small form factor, industry standard MT-RJ connector at one end for attachment to the ESCON adapter port. The other cable end, which connects to the server or fabric port, can be

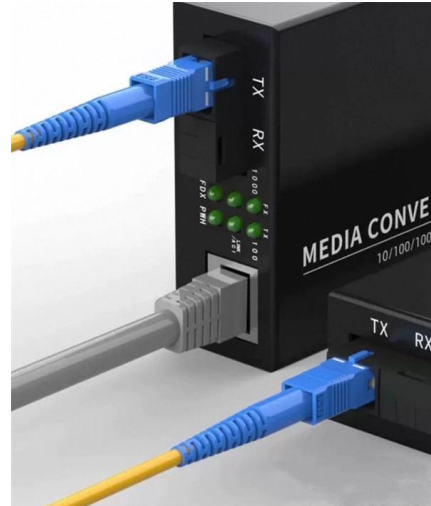
[Contact Us](#)



## ESCON2 60-12 Hardware Reference

These tables provide information about the hardware connectors, their corresponding wired signals, the assigned pins, and details regarding the prefab cables that are available.

[Contact Us](#)



## Projects

The scope of the project includes greenhouse gas emission reporting for scopes 1-2, energy recovery, energy efficiency, energy transformation, and renewable energy

[Contact Us](#)

## ESCON2 Compact 60-12 Hardware Reference

These tables provide information about the hardware connectors, their corresponding wired signals, the assigned pins, and details regarding the prefab cables that are available.

[Contact Us](#)



## ESCON connector

The connector system is a Retractable Shroud Duplex (RSD) and can be supplied as terminated patchcords or pigtails. Hybrid patchcords, terminated one end with an

[Contact Us](#)



### ESCON Fiber optic patch cord

The Enterprise Systems Connection Architecture ESCON Connector is a channel interconnection environment developed by IBM to take advantage of fiber media and dynamic ESCON Patch cord

[Contact Us](#)



### ESCON Fiber Patch Cable

The cable is born a duplex type. The feature of ESCON connector is that it has a shock proof plastic housing with a retractable shroud to protect the ceramic ferrules inside the connectors; ESCON is a

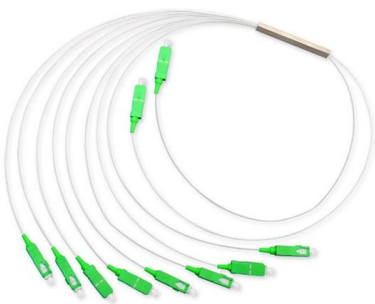
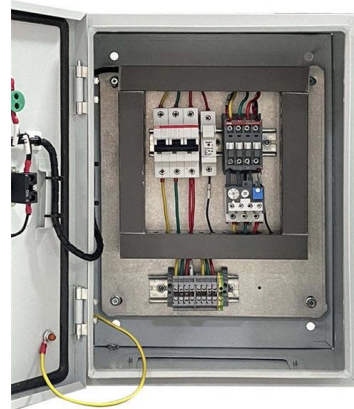
[Contact Us](#)



### CONNECTORS & ADAPTORS

The connector system is a Retractable Shroud Duplex (RSD) and can be supplied as terminated patchcords or pigtailed. Hybrid patchcords, terminated one end with an ESCON connector and the

[Contact Us](#)



### ESCON Enerji A.S. , LinkedIn

ESCON Enerji A.S. , 10.094 Follower:innen auf LinkedIn. Sustainable Energy Efficiency Esco4Zero , ESCON Energy, founded in 2004 as the first Turkish ESCO and accredited in 2009 as Energy

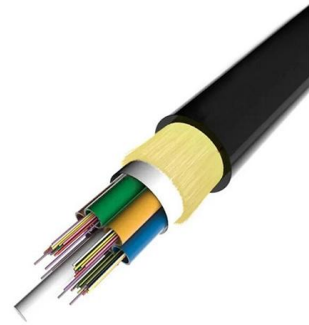
[Contact Us](#)



## Escon International

Our cutters provide good work life and energy saving even when used on solid woods. Teeth of Circular blanks are brazed with Tungsten Carbide Tips which are

[Contact Us](#)



### **Optimizing Energy Consumption in Warehouse & Logistics Facilities**

Qassim A. Abahussaien Abstract- This paper offers a holistic approach in reducing energy consumption in industrial facilities, specifically warehouse & logistics facilities by exploring various ways or

[Contact Us](#)

## Contact Us

---

For datasheets, pricing, or custom fiber access solutions, please visit:  
<https://frindel.es>