

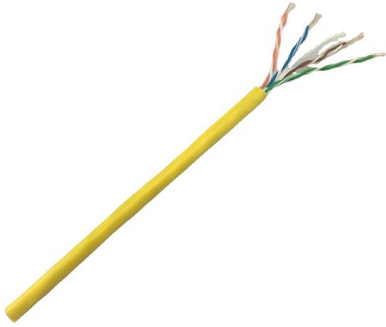
# **EDFA Remote Monitoring Type**





## EDFA Remote Monitoring Type

---



### What is EDFA, How it Works and Why They Matters?

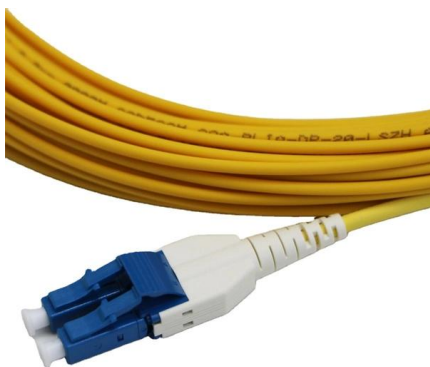
Discover the essence of EDFA technology: its inner workings, significance, and impact. Unravel the mysteries behind EDFA and why it stands

[Contact Us](#)

### EDFA-4429 series

EDFA-4429 series FTTP EDFA can monitor system operation and generate brief warning notes, taking corrective actions regarding system parameters, equipment tolerance, laser aging, RF level

[Contact Us](#)



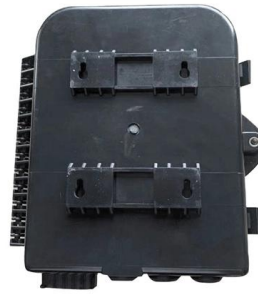
### Remote Real-Time Optical Layers Performance

The Fiber Performance Monitoring Tool (FPMT) technique is one modern method of monitoring fiber line performance failure remotely in real-time

[Contact Us](#)

### PBN EDFA-R PRODUCT USER MANUAL Pdf Download , ManualsLib

View and Download PBN EDFA-R product user manual online. Erbium Doped Fiber Amplifier with Redundant Power Supplies. EDFA-R amplifier pdf manual download.



### **The Role of Quality EYDFA in Fiber Optic Network in 2026**

EYDFA is based on the EDFA structure and includes a Ytterbium-doped fiber amplifier module, which is used to boost the fiber signal to a more intensive

[Contact Us](#)



### **What Are EDFA Optical Amplifiers?**

Key Types of EDFA Optical Amplifiers CATV EDFA  
In Cable Television (CATV) networks, signal loss over long distances is a major concern.

[Contact Us](#)



### **Optical Amplifier--EDFA (Erbium-doped Fiber Amplifier)**

There are several types of fiber optic amplifiers: semiconductor optical amplifier (SOA), fiber Raman and Brillouin amplifier, and erbium-doped fiber

[Contact Us](#)





### Real Time in Situ Remote Monitoring for Cladding

Etched-tapered FBGs were fabricated and studied to detect NH3 leaks at room temperature for real-time remote monitoring over 3 km by using an

[Contact Us](#)



### Real Time in Situ Remote Monitoring for Cladding Modified SMF

For real-time in situ remote monitoring, the 3 km SMF was included as a telecommunication route, and EDFA was included to increase optical response power and transmission distance.

[Contact Us](#)

### What is an Erbium Doped Fiber Amplifier (EDFA) and

But what exactly is an EDFA, how does it function, and where is it applied? An Erbium-Doped Fiber Amplifier (EDFA) is an optical amplifier that

[Contact Us](#)



### Concept of EDFA ( Erbium-doped Optical Fiber Amplifier )

Concept of EDFA ( Erbium-doped Optical Fiber Amplifier ) : You all must have heard this word EDFA a lot but few people will know its concept. What

[Contact Us](#)



## What is an Erbium-Doped Fiber Amplifier(EDFA) in

Table of Contents An erbium-doped fiber amplifier (EDFA) is a type of optical amplifier that increases the strength of light signals traveling through fiber

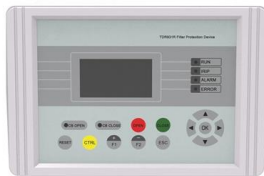
[Contact Us](#)



## Real Time in Situ Remote Monitoring for Cladding Modified SMF

Etched-tapered single-mode optical fiber (ETSMF) sensors coated with polyaniline nanofiber/graphite nanofiber (PANI/GNF) nanocomposites have been developed for the real-time in

[Contact Us](#)



## Real Time in Situ Remote Monitoring for Cladding Modified SMF

The NH3 sensing performance of the SMF sensors coated with PANI/GNF nanocomposite was remotely monitored and investigated at room temperature over the link of 3 km SMF with the use of EDFA.

[Contact Us](#)



## GitHub

COSMOS Erbium-Doped Fiber Amplifier (EDFA) Dataset consists of the gain spectrum measurements using the built-in photodiodes (PDs) and optical channel

[Contact Us](#)



## EDFA (Erbium Doped Fiber Amplifier) - Physics and

EDFA Definition EDFA (Erbium-Doped Fiber Amplifier) is an optical device used to compensate optical signal attenuation caused by fibers and components, to

[Contact Us](#)



## Optical Amplifier , EDFA for DWDM Networks

The PL-1000IL is fully managed, configured and monitored remotely as part of the network, via optical supervisory channel (OSC). It supports both automatic gain

[Contact Us](#)

## Understanding Erbium-Doped Fiber Amplifiers (EDFA)

What is an EDFA? An Erbium-Doped Fiber Amplifier is a device used to amplify optical signals in fiber optic cables. By doping a segment of the fiber with

[Contact Us](#)

OEM/ODM  
CUSTOMIZATION AVAILABLE



## SFP Variable Optical Attenuator VOA Module for M6200

Utilizing MEMS technology, it combines a variable attenuator and tap power monitor in a compact MSA-compliant form factor, enabling remote adjustment via the

[Contact Us](#)



## Remote Real-Time Optical Layers Performance Monitoring Using a

Remote Real-Time Optical Layers Performance Monitoring Using a Modern FPMT Technique Integrated with an EDFA Optical Amplifier

[Contact Us](#)



## What is EDFA? How does EDFA work? And what are the types of

What are the types of EDFA? According to its position and function in the system, EDFA can be divided into Booster Amplifier, In-line Amplifier and Pre-Amplifier.

[Contact Us](#)

## Real Time in Situ Remote Monitoring for Cladding Modified SMF

The integration of EDFA into SMF sensors extended the remote monitoring distance. In the C band, the developed sensor showed the response, recovery time, and sensitivity of 59 s, 461 s,

[Contact Us](#)



## ERBIUM-DOPED FIBER AMPLIFIER

The EDFA is a high-power Erbium-Doped Fiber Amplifier for optical signal amplification in C band. cal-electrical test systems Constant power output mode. With the built-in closed-loop power monitoring,

[Contact Us](#)



**TECHNETIX EDFA-R PRODUCT USER MANUAL Pdf Download**

View and Download technetix EDFA-R product user manual online. Erbium Doped Fibre Amplifier With Redundant Power Supplies. EDFA-R amplifier pdf manual download.

[Contact Us](#)



**Use of EDFA Optical Amplifiers - DWDM.ME Blog**

EDFA is usually not used on short optical links (up to 40 km), where high-power optical transceivers are sufficient. However, in complex topologies with many passive elements (splitters,

[Contact Us](#)

**What is an Erbium Doped Fiber Amplifier (EDFA) and**

But what exactly is an EDFA, how does it function, and where is it applied? An Erbium-Doped Fiber Amplifier (EDFA) is an optical amplifier that significantly



[Contact Us](#)



**(PDF) Remote Real-Time Optical Layers Performance**

In this paper, the performance of the fiber performance monitoring tool (FPMT) technique was improved by integrating it with optical amplifier boards.

[Contact Us](#)



## Contact Us

---

For datasheets, pricing, or custom fiber access solutions, please visit:  
<https://frindel.es>