

Dual-optical four-electric switch





Dual-optical four-electric switch



Topology-optimized silicon-based dual-mode 4 × 4

In this paper, we design and experimentally demonstrate a high-speed dual-mode 4 × 4 optical switch based on a mode-diversity scheme, composed of

[Contact Us](#)

2×2 Electro-optic Switch with fJ/bit Switching Power

We propose a compact (5μm × 40μm) 2×2 electro-optic switch implemented by dual silicon photonic crystal nanobeam (PCN) cavities. A

[Contact Us](#)



An Ultra-Compact 4 × 4 and 8 × 8 Optical Switch Based on Dual-Microring

Citations (9) References (31) Abstract We demonstrate an optical switch array based on the topology of Butterfly by using dual-microring resonators which can be used in the ultra-compact

[Contact Us](#)



The dual-mode 4 × 4 optical switch. (A) Main schematic.

(D) The cross section at the red line of (C). from publication: Topology-optimized silicon-based dual-mode 4 × 4 electro-optic switch , Silicon-based optical switch



Dual control all-optical switch based on MIM door-type waveguide

In this work, combining pressure and Kerr effect, an all-optical switch structure with dual control of pressure and light intensity based on MIM waveguide is proposed.

[Contact Us](#)



Topology-optimized silicon-based dual-mode 4 × 4 electro-

In this paper, we design and experimentally demonstrate a high-speed dual-mode 4 × 4 optical switch based on a mode-diversity scheme, composed of four pairs of mode multiplexers and de

[Contact Us](#)



Dual-mode 2 × 2 electro-optic switch on a SOI platform

The dual-mode Mach-Zehnder interferometer switch comprises of four p-i-n phase shifters and two mode-insensitive multimode interferences that

[Contact Us](#)





LightBend(TM) Dual Full 2x2 MM Optical Switch

SKU: LBDU The LB Series Dual Full 2x2 multimode OptoMechanical Fiberoptic switch connects optical channels by redirecting incoming optical signals into selected output fibers. This is achieved using

[Contact Us](#)



Dual-mode 2 x 2 electro-optic switch on a SOI platform

Mode-division multiplexing (MDM) technology is promising for enhancing the capacity of communication networks. In this Letter, we demonstrate a dual-mode 2 x 2 electro-optical switch on a silicon-on-

[Contact Us](#)



Four-state electro-optic switch operating in the short-wave infrared

A four-state electro-optic switch dynamically tunes AZO electron concentration via electrical carrier injection, operating across 920-1235 nm with 97.08% peak modulation depth, 15.35 dB extinction

[Contact Us](#)



On-chip silicon photonic controllable 2 x 2 four-mode waveguide switch

In this paper, we propose a novel compact 2 x 2 four-mode optical switch enabling the switching operation of four modes simultaneously, which is based on Y-junction couplers and 2 x 2

[Contact Us](#)





Dual-mode 2 × 2 electro-optic switch on a SOI platform

In this Letter, we demonstrate a dual-mode 2 × 2 electro-optical switch on a silicon-on-insulator platform. The dual-mode Mach-Zehnder interferometer switch comprises of four p-i-n phase shifters and two

[Contact Us](#)



High-speed 4 × 4 silicon photonic electro-optic switch, operating at

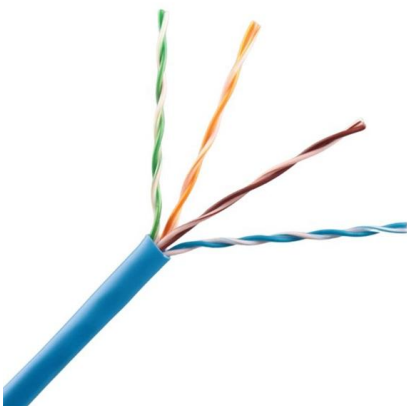
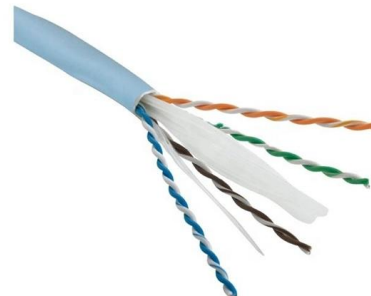
In this study, we demonstrate a plasma dispersive, 4 × 4 electro-optic switch operating at the 2- μ m waveband with the shortest switching times. The demonstrated switch operates across a 45-nm

[Contact Us](#)

An Ultra-Compact 4 × 4 and 8 × 8 Optical Switch Based on Dual

Abstract: We demonstrate an optical switch array based on the topology of Butterfly by using dual-microring resonators which can be used in the ultra-compact network.

[Contact Us](#)



ChanghuaChenandLinYang* Topology-optimizedsilicon-baseddual

on-strate a topology-optimized silicon-based dual-mode 4 × 4 electro-optic (EO) switch. Based on the mode-diversity-processing idea mentioned above, the multimode optical switch divides the TE₀ and

[Contact Us](#)



Silicon Non-Blocking 4 × 4 Optical Switch Chip Integrated With Both

We experimentally demonstrate an integrated strictly non-blocking silicon 4 × 4 optical switch chip that can be operated in both thermo-optic (TO) and electro-optic

[Contact Us](#)



Dual-mode 2 × 2 Electro-Optic Switch on a SOI Platform.

In this Letter, we demonstrate a dual-mode 2 x 2 electro-optical switch on a silicon-on-insulator platform. The dual-mode Mach-Zehnder interferometer switch comprises of four p-i-n phase shifters and two

[Contact Us](#)



Topology-optimized silicon-based dual-mode 4 × 4

In this paper, we design and experimentally demonstrate a high-speed dual-mode 4 × 4 optical switch based on a mode-diversity scheme, composed of four pairs of

[Contact Us](#)

OEM/ODM
CUSTOMIZATION AVAILABLE



A Review of Silicon-Based Integrated Optical Switches

The optical switch is an essential part of optical integrated circuits, with broad applications in optical communications and networks, optical computing,

[Contact Us](#)



Discover GEZHI's Dual 2x2B Optical Switch for Optimal

Explore GEZHI Photonics Dual 2x2B Optical Switch, a reliable and high-performance fiber optic solution for network switching, system monitoring,

[Contact Us](#)



The dual-mode 4 × 4 optical switch. (A) Main schematic.

We demonstrate a polarization-insensitive 2 × 2 thermo-optic switch on a 220-nm silicon-on-insulator platform. This device is based on a balanced Mach-Zehnder

[Contact Us](#)



1 × N (N = 2, 4) dual-mode optical switch based on multimode

This paper presents the design and demonstration of 1 × N (N = 2, 4) dual-mode optical switches on a silicon-on-insulator platform, optimized for mode division multiplexing (MDM).

[Contact Us](#)



Ultrafast and High Extinction Ratio 1×4 Electro-Optical Switch Based

We propose and fabricate an ultrafast and high extinction ratio 1 × 4 optical switch based on a cascade, dual-output Mach-Zehnder interferometer (MZI) on the lithium niobate platform. The optical switch

[Contact Us](#)





Topology-optimized silicon-based dual-mode 4 × 4 electro-optic switch

In this paper, we design and experimentally demonstrate a high-speed dual-mode 4 × 4 optical switch based on a mode-diversity scheme, composed of four pairs of mode multiplexers and de

[Contact Us](#)



Fully packaged polymeric four arrayed 2 × 2 digital

The crosstalks are less than -30 dB for all four 2/spl times/2 digital optical switch elements with each total electrical power of 250 mW. The fall and

[Contact Us](#)



Contact Us

For datasheets, pricing, or custom fiber access solutions, please visit:
<https://frindel.es>