



FRINDEL OPTICS

Dual-line dual-side power supply relay protection





Dual-line dual-side power supply relay protection



Protective Relay Dual-Source Power Supply

A separate Dual-Source Power Supply is available for use with ac power and is ideal for retrofit applications for use in conjunction with the DT-3000 Protective Relay family.

[Contact Us](#)

Siemens Delivers High-performance with Dual Powered Protection Relay

Reyrolle 7SR46 protection relay Due to their often remote location, secondary substations do not always have a battery to provide power to electronic equipment such as

[Contact Us](#)



Application of Modern Relays to Dual-Breaker Line Terminals

Modern microprocessor-based line protection relays (or Intelligent Electronic Devices, IEDs) allow for protection and control of the dual-breaker line arrangement from a single device.

[Contact Us](#)

Protective Relays

Protect critical components in your power system with a wide range of SEL protective relays covering applications and use cases from low to high-voltage protection.

[Contact Us](#)



SEL APPLICATION GUIDE

The first scheme uses true multiprinciple line protection, with a distance and directional overcurrent relay as primary protection and a line current differential relay as dual primary.

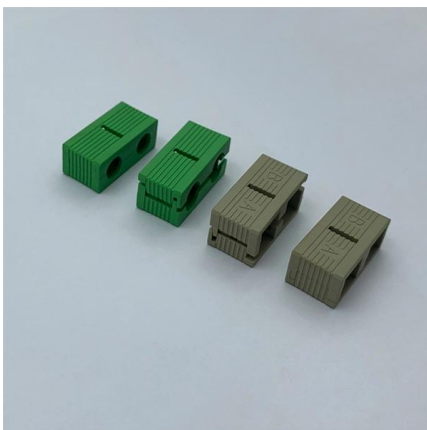
[Contact Us](#)

Settings Considerations for Distance Elements in Line Protection

In dual-breaker applications, close-in external faults may jeopardize Zone 1 distance element security when the current transformer that carries the fault current away from the line zone of protection



[Contact Us](#)



Introduction to Protective Relaying , Electric Power

Introduction to Protective Relaying What are Protective Relays, or Protection Relays? Protective relays are used in industrial power generation and supply

[Contact Us](#)



Protective Relay Dual-Source Power Supply

3000 overcurrent relay with Dual- Source Power Supply provides complete 3-phase and ground protection for ac control powered applications. The unit fits into the IQ cutout and the current

[Contact Us](#)



OC& EF Dual & Self Powered Protection Relay

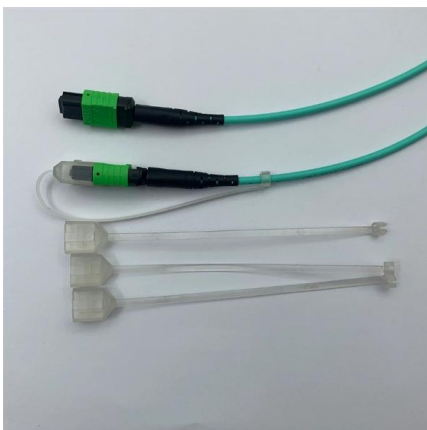
Different sizes of SIA-C relays are available by model list to fulfil all the market needs and to make the installation easier.

[Contact Us](#)

Multilin D60 Line Distance Protection System Datasheet

Explore the Multilin D60 Line Distance Protection System datasheet for high-speed transmission line protection. Learn about its features and applications.

[Contact Us](#)



An Overview of Dual Power Supply Design , Altium

In this article, you will learn about the numerous types and configurations for designing PCB with a dual power supply. Mark Harris included

[Contact Us](#)



A Dual-powered Protection Relay for Overcurrent and

Siemens introduces a new addition to the Reyrolle protection product line that is capable of being installed in remote locations with the ability of dual

[Contact Us](#)



Multilin L90

Built on the industry-leading UR platform, the Multilin L90 transmission protection relay provides high-speed current differential protection suitable for transmission

[Contact Us](#)

Protective relay

In electrical engineering, a protective relay is a relay device designed to trip a circuit breaker when a fault is detected. : 4 The first protective relays were

[Contact Us](#)



Dual-in-Line DIL/DIP Reed Relays

The Series 97 is a range of reed relays with pins in the popular Dual-in-Line format.

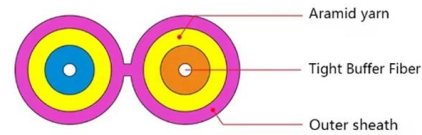
[Contact Us](#)



Siemens delivers high-performance with dual powered

Providing additional flexibility and security, the 7SR46 is dual powered to allow a connection to an auxiliary battery supply. With power

[Contact Us](#)



Slide 1

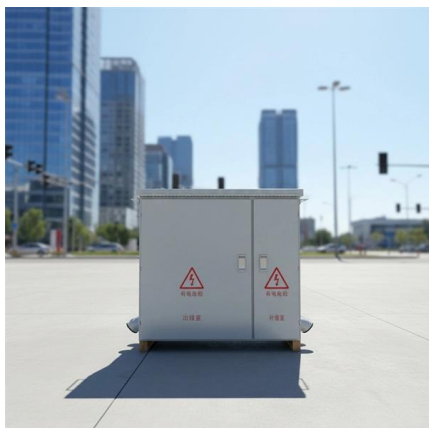
Using CPC approach, reliability of protection and control systems and the power grid can be enhanced. A double-bus with bus tie breaker configuration has two busses with both containing sources and

[Contact Us](#)

Multilin L90

Multilin L90 Line Protection System with Segregated Line Current Differential and Distance Protection The Multilin™ L90 is a high-end line current differential protection relay intended for transmission

[Contact Us](#)



Power System Protective Relays: Principles & Practices

Protective relays and devices have been developed over 100 years ago to provide "lastline"of defense for the electrical systems. They are intended to quickly identify a fault and isolate it so the balance of

[Contact Us](#)



Self/Dual-Powered (Current or Auxiliary DC) Supply for MCCB/ACB

These self-powered numerical relays operate without auxiliary voltage via an integrated CT power supply. Self-powered numerical relays are an ideal choice for installation, even in remote locations

[Contact Us](#)



SEL-700G Family of Generator and Intertie Protection Relays

Major Features and Benefits The SEL-700G family of protection relays provides unsurpassed protection, integration, and control features in a flexible, compact, and cost-effective package.

[Contact Us](#)



8 typical transformer protection schemes with correctly

Protection schemes and relays selection This technical article shows application hints for typical transformer protection schemes where SIPROTEC 4

[Contact Us](#)



Multilin D60

Single and Three-Pole Tripping The MultilinTM D60 is a high-end, cost-effective distance protection relay intended for protecting transmission lines and cables, providing reliable and secure operation

[Contact Us](#)



Reyrolle 7SR46 Dual Powered Overcurrent Protection

To serve specific needs in industrial applications, a range of proven products such as "Argus overcurrent", "Solkor line differential" and "Rho motor protection devices" are offered.

[Contact Us](#)



Dual high side smart power solid state relay

The device drives two independent resistive or inductive loads with one side connected to ground. Active current limitation prevents a drop in system power supply in cases of shorted-load, and built-in

[Contact Us](#)

Contact Us

For datasheets, pricing, or custom fiber access solutions, please visit:
<https://frindel.es>