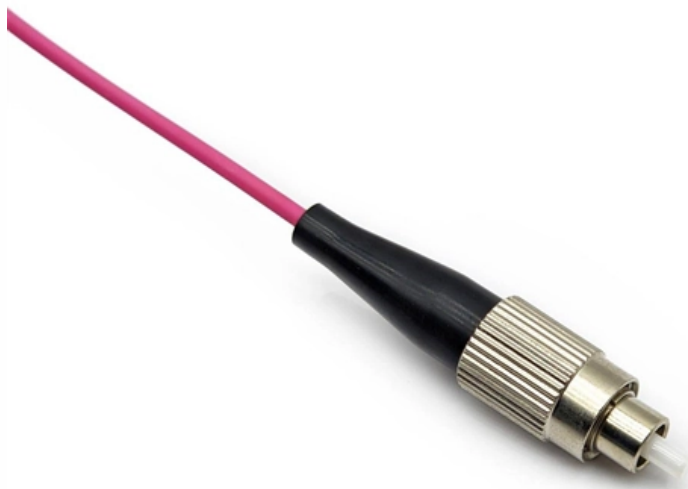


# **Does the optical port of a Huawei switch need configuration**





## Overview

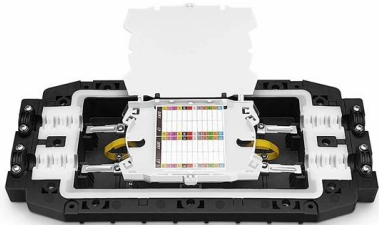
---

Both the local and remote interfaces do not need to have optical modules installed. Problem: All optical ports cannot be connected, and the indicator lights are not on. The Combo interface, also known as the optical-electrical multiplexing interface, consists of two Ethernet ports (one optical and one electrical) on the device panel, and there is only one forwarding interface inside the device. Step 3: Turn the snap of the module so that it snaps the knob at the top of the module. This document discusses how to configure an Eth-Trunk in manual load balancing mode, how to configure an Eth-Trunk in LACP mode, and how to locate an Eth-Trunk fault.



## Does the optical port of a Huawei switch need configuration

---



### Troubleshooting for Optical Modules on Huawei Switch

The type of optical modules used on the two ports is not restricted. For example, a port with an XFP optical module can communicate with a port with an SFP+

[Contact Us](#)

### How To Check If Interconnected Optical Ports Cannot

1. Checking the Optical Module Type Log in to the switch through Telnet or console port to check the switch model. Run the display device command to check the

[Contact Us](#)



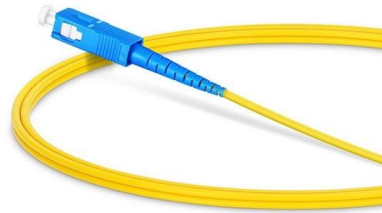
### Example for Configuring a Combo Interface

When you enable the electrical or optical interface, configure the interface attributes (such as the rate and duplex mode) in the same interface view. The electrical and optical interfaces of a combo

[Contact Us](#)

### Huawei S5700 Series Configuring And Troubleshooting

This document discusses how to configure an Eth-Trunk in manual load balancing mode, how to configure an Eth-Trunk in LACP mode, and how to locate an Eth



### LLDP Configuration Commands

This document describes all the configuration commands of the device, including the command function, syntax, parameters, views, default level, usage guidelines, examples, and related commands.

[Contact Us](#)



### Configuring Attributes for an Optical Interface

Both the local and remote interfaces do not need to have optical modules installed. The 40GE interface can be connected to four 10GE interfaces on the remote device using a 1-to-4 40GE optical module

[Contact Us](#)



### Checking the Interface Status and Configuration Parameters

Check the status and configuration parameters of the interfaces on the two ends. Ensure that the interfaces run properly and have the same configuration, including the rate, duplex mode, and

[Contact Us](#)



## Optical Transceiver Manufacturer, Huawei S6720s

Huawei S6720S switch and 10G SFP+ optical module matching solution: 10G Optical module can support hot plug, and the maximum transmission distance can reach

[Contact Us](#)



### Configuring Attributes for an Optical Interface

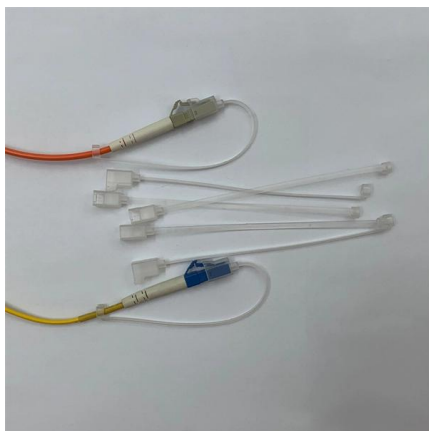
The configuration is automatically delivered to the new member switch without manual intervention. However, the new member switch takes a longer time to start than other member

[Contact Us](#)

### How to Enable Ports in Huawei Switch? Could Open Ports Unlock

Configuring ports on a Huawei switch is a fundamental yet critical task for network administrators. Whether you're setting up a new network segment or troubleshooting connectivity

[Contact Us](#)



### Example for Configuring a Layer 3 Switch to Work with a Router for

Example for Configuring a Layer 3 Switch to Work with a Router for Internet Access Layer 3 Switch Layer 3 switches provide the routing function, which indicates a network-layer function in the OSI

[Contact Us](#)

### Common Problems And Solutions When Using Optical



As a more sensitive optical device, optical modules sometimes have some problems during use. Below, Telecomate will list some common problems and

[Contact Us](#)



### Understanding CPU and CPU Usage

For example, when a switch is reading optical transceiver information or traffic is bursting, the CPU usage may sharply increase. This is a normal and acceptable situation.

[Contact Us](#)

### What Can I Do If a Message Is Displayed Indicating that an Optical

For example, if a non-XGE optical module is installed on an XGE port, the rate of the optical module does not match the port rate. In this case, replace the current optical module with a supported optical

[Contact Us](#)



### How To Switch Optical-Electrical Mode On Huawei

After switching the interface to the optical interface, access the GE SFP optical module at this time, and the module can work normally. For related commands,

[Contact Us](#)





## Optical Module Solutions for Huawei S5700/S5720 Series Switches

This article summarizes several solutions for using optical modules with switches and common problems encountered during usage, along with specific solutions.

[Contact Us](#)



## Huawei Switch Configuration Guide

The document provides configuration instructions and commands for basic switch configuration using Huawei switches. It covers topics such as changing the

[Contact Us](#)

## HUAWEI ECHOLIFE EG8021V5 QUICK START

What kind of internet service is compatible with the Huawei EchoLife EG8021V5? The Huawei EchoLife EG8021V5 is an Optical Network Terminal (ONT) and is

[Contact Us](#)



## Enabling pass through in a Huawei optic router

I plugged in my Archer router into port #4 of the Huawei router (I had previously plugged it into port #1, as one does), and I can see the public IP

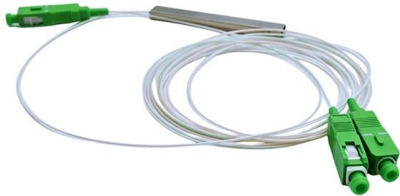
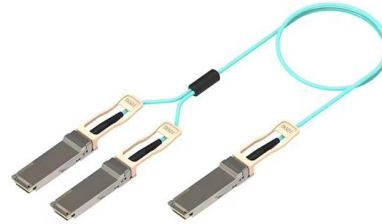
[Contact Us](#)



## Empowering Enterprise Connectivity: An In-Depth Look at the Huawei

The Huawei S5735-L48P4X-A is more than just a switch; it is a high-density power hub and a high-speed data gateway rolled into one. By providing 48 GE PoE+ ports and 10G uplinks, it

[Contact Us](#)



## Cisco C9200-48T-A 48-Port Switch , Network Advantage License

Cisco Catalyst C9200-48T-A 48-port switch with Network Advantage license. Features Layer 3 routing, 160Gbps stacking, and advanced security. 1-year warranty.

[Contact Us](#)

## The Network DNA: Networking, Cloud, and Security

Master networking, cloud, and security with in-depth analysis, tutorials, and research. Stay ahead of the curve with our expert tech blog.

[Contact Us](#)



## ECHOLIFE HG8121H QUICK START MANUAL Pdf

View and Download EchoLife HG8121H quick start manual online. GPON. HG8121H touch terminals pdf manual download.

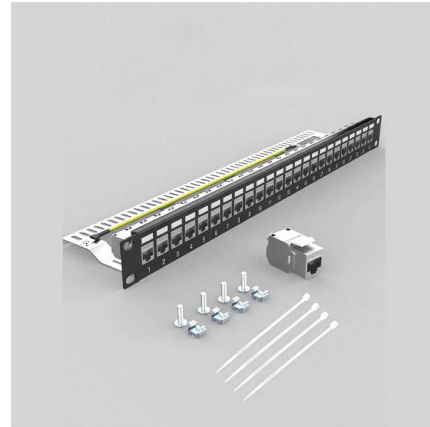
[Contact Us](#)



## Deploying Cisco C9200L-48T-4X: StackWise, SFP+ Optics

Master your Cisco C9200L-48T-4X deployment. Learn the rules for StackWise-80, 1G/10G SFP+ optics compatibility, and explore top Huawei/Ruijie alternatives.

[Contact Us](#)



## Configuring Attributes for Ethernet Optical Interfaces

Pre-configuring a Transmission Medium Type for an Optical Interface Context Some functions can be configured on an optical interface only after the interface connects to a transmission medium (such

[Contact Us](#)



## Huawei 8 port switches

Types of Huawei 8 port switches The Huawei 8 port switch is a network device with eight network ports. It comes in different variants designed to meet diverse user requirements. Managed

[Contact Us](#)



## Example for Configuring a Combo Interface

This configuration ensures that the combo interface's working mode does not change when the transmission medium changes, for example, a GE optical module is installed.

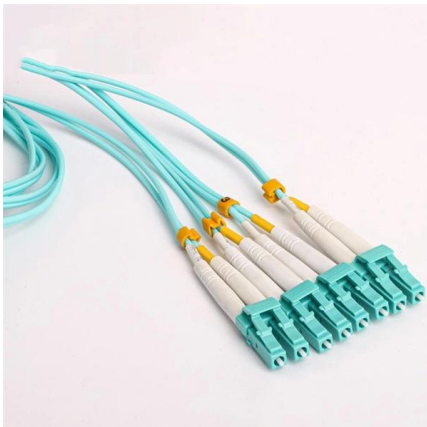
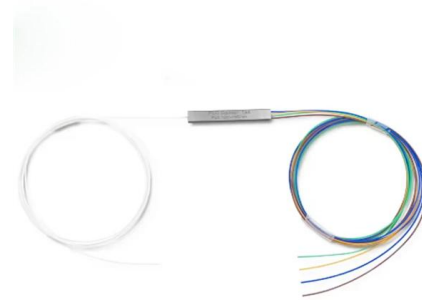
[Contact Us](#)



## Ethernet Interface Configuration Commands

This page provides configuration commands for Ethernet interfaces on Huawei devices, covering settings like duplex mode and auto-negotiation.

[Contact Us](#)



**waifu-diffusion/tokenizer/vocab.json at main · jack-op11**

Contribute to jack-op11/waifu-diffusion development by creating an account on GitHub.

[Contact Us](#)

## Contact Us

---

For datasheets, pricing, or custom fiber access solutions, please visit:  
<https://frindel.es>