

# **Does fiber optic patch cord have high loss Why**





## Overview

---

For example: Multimode fibre patch cables (OM3, OM4) should show insertion loss values under 0. Insertion loss (IL) and return loss (RL) are key performance indicators of fiber optic patch cords. This article explains their concepts, standards, testing methods, and FiberMania's quality assurance workflow to ensure optimal network performance. While this was only a minor issue, it greatly affected both the optical alignment and, as indicated by test results in the field, return loss, which ideally should be approximately -65 dB, increased to 20 dB or more because of light reflecting into transceiver modules.



## Does fiber optic patch cord have high loss Why

---



### Fiber Optic Cable Testing Methods ,Fluke Networks

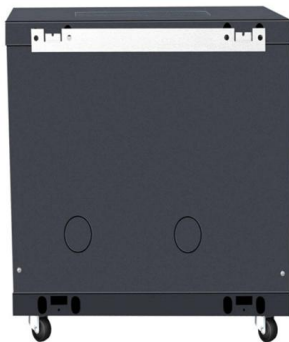
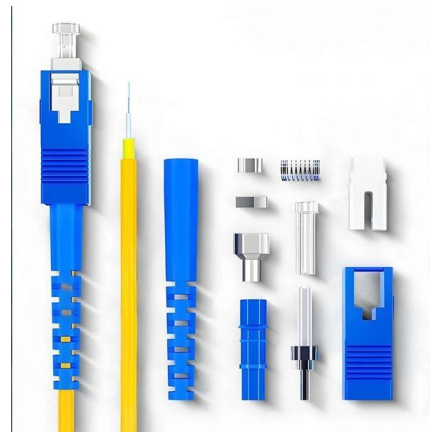
Fiber Optic Cable Testing Methods Fiber optic networks are the backbone of modern telecommunications, providing high-speed data transmission over long distances with minimal loss.

[Contact Us](#)

### Fiber Optic Cable Types Explained: Choosing the Right

In high-speed network environments--such as data centers, enterprise LANs, and telecom backbones--fiber optic cables are critical in

[Contact Us](#)



### Why Is Your Internet Connection Constantly Dropping? Uncovering

Environmental Factors: Exposure to extreme temperatures, moisture, or mechanical stress degrades the patch cord's integrity. Investing in high-quality, traceable, and flame-retardant fiber optic patch cords

[Contact Us](#)

### Why Choose 0.1dB Insertion Loss Fiber Patch

Insertion loss refers to the loss of signal power as light passes through fiber connectors or cables, measured in decibels (dB). Lower insertion loss

[Contact Us](#)



### Key Quality Indicators and Technical Parameters of

Every TARLUZ patch cord undergoes 100% insertion loss testing to ensure compliance with stringent performance requirements, supporting high

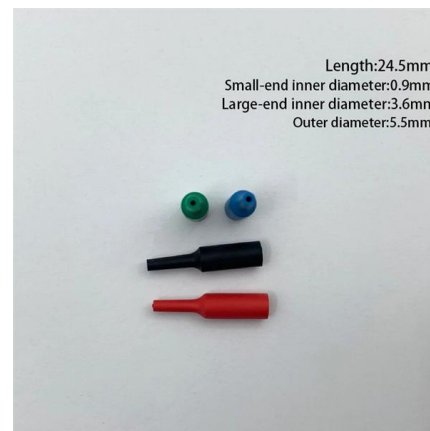
[Contact Us](#)



### Signal Loss in Fiber Optic Cables: Identifying and Solving the Issue

In Conclusion Signal loss in fiber optic cables is a common issue that can impact the performance of your network. By understanding the causes and symptoms, you can effectively identify and solve this

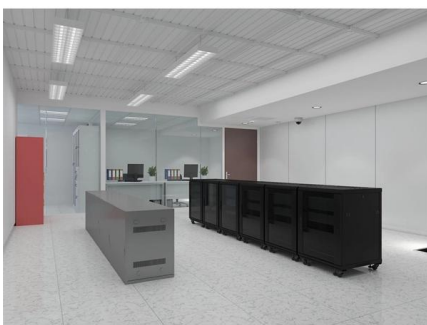
[Contact Us](#)



### Multi-mode optical fiber

Multi-mode optical fiber is a type of optical fiber mostly used for communication over short distances, such as within a building or on a campus. Multi-mode links can

[Contact Us](#)





## Fibre Patch Cable: The Importance of Insertion and Return Loss

High return loss can disrupt transmission and reduce network efficiency, especially in systems using bidirectional transceivers. To ensure your network performs at its best, you must select high-quality

[Contact Us](#)



## Fiber Patch Cords: A Critical Component in Modern Fiber Optic

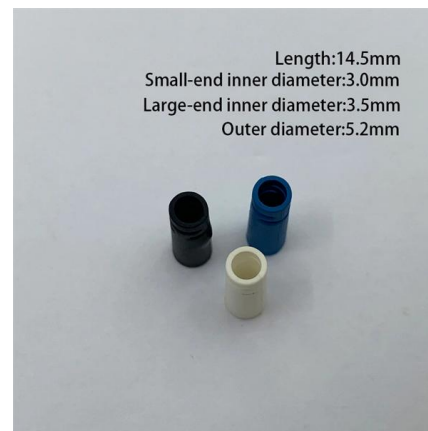
Conclusion Fiber patch cords are an indispensable part of the fiber optic network ecosystem. Whether in single-mode or multi-mode configurations, fiber patch cords facilitate the

[Contact Us](#)

## Key Quality Indicators and Technical Parameters of

A Technical Overview by TARLUZ Fiber Optics  
Fiber optic patch cords are essential components in modern optical communication networks,

[Contact Us](#)



## Common Failures in Fiber Optic Patch Cords

Engineering analysis of common fiber optic patch cord failures, covering root causes, symptoms, and prevention strategies in FTTH and data center networks.

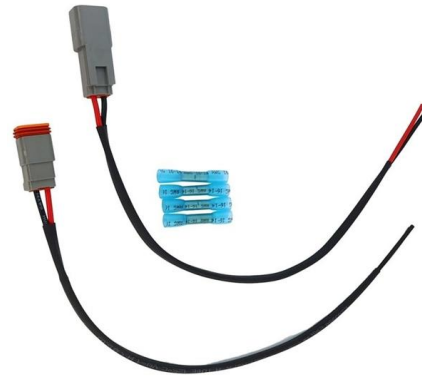
[Contact Us](#)



## How Do Fiber Patch Cables Enhance Network Performance?

Ever wondered why your network might be lagging despite high-end routers and switches? Fiber patch cables might be the missing link. Fiber patch cables transmit data at lightning speeds over great

[Contact Us](#)



## Cables

Buy cables, fiber optic cables, Cat6 cables, Cat5 Cables, ethernet cables, power cords, patch cables, HDMI and custom cables. Shop for cables.

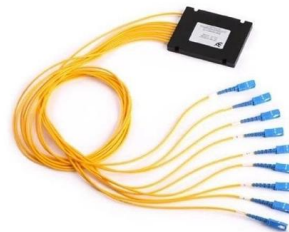
[Contact Us](#)



## Light Reading

Light Reading is the leading source of news analysis for communications industry professionals.

[Contact Us](#)



## Ultimate Guide to Fiber-Optic Patch Cables: Types, Selection, and

Learn about fiber optic patch cables, their types, construction, applications, and how to choose the right one for your network needs.

[Contact Us](#)

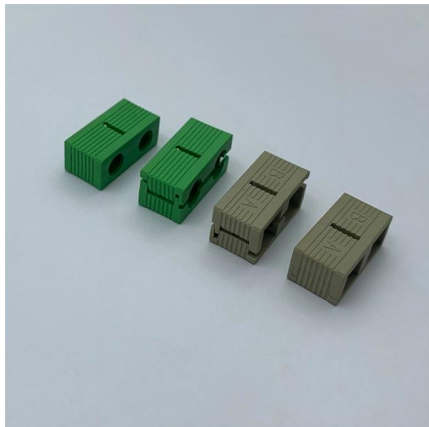




## Insertion Loss vs Return Loss in Fiber Patch Cords

Fiber optic patch cords are crucial components in modern data transmission networks, and their performance is largely determined by insertion loss (IL) and

[Contact Us](#)



## MPO/MTP Male vs Female and Pin vs No-Pin Explained

This article explains MPO/MTP male and female connectors by clarifying the pin vs no-pin structure to support correct high-density fiber

[Contact Us](#)

## Why Fiber Optic Patch Cords Fail: What Every Engineer Must Know

Causes of Return Loss at Mated Single Mode Fiber Optic Connections: Detailed study explaining refractive index mismatches and physical contact failures leading to high return loss in

[Contact Us](#)



## Understanding Fiber-Optic Cable Signal Loss, Attenuation, and

To determine the power budget and power margin needed for fiber-optic connections, you need to understand how signal loss, attenuation, and dispersion affect transmission. The uses

[Contact Us](#)





## Why the Singlemode APC 2SC to 2SC Fiber Optic Patch Cord is the

This guide explains why the Singlemode APC 2SC to 2SC fiber optic patch cord is essential for outdoor networks, detailing its unique construction, installation steps, and verification methods to ensure

[Contact Us](#)



## Insertion Loss vs Return Loss in Fiber Patch Cords

Understand insertion loss (IL) and return loss (RL) in fiber optics. Learn testing standards and why they matter for reliable patch cord performance.

[Contact Us](#)

## Analysis of insertion loss and return loss of optical fiber patch cords

The APC connector can achieve the highest return loss among the three due to the use of beveled fiber end faces. In summary, we need to understand the insertion loss and return loss of

[Contact Us](#)



## Optical fiber connector

An optical fiber connector is a device used to link optical fibers, facilitating the efficient transmission of light signals. An optical fiber connector enables quicker

[Contact Us](#)



## Fibre Patch Cable: The Importance of Insertion and Return Loss

Insertion loss refers to the reduction in optical power as the signal travels through the fibre patch cable. Lower insertion loss values indicate better performance, as more light reaches the intended

[Contact Us](#)



## Multi-Mode to Single-Mode Conversion: How to Bridge

A Mode Conditioning Patch cable is a special duplex patch cord that allows a longwave laser (e.g., 1310nm or 1550nm) to be launched into multi-mode

[Contact Us](#)

## Fiber Optic Patch Cables: The Complete 2026 Buyer's Guide

Confused by LC, SC, MPO, UPC, and APC? This complete fiber optic patch cable guide covers connector types, single-mode vs multimode, insertion loss specs, and how to choose the right

[Contact Us](#)



## 11 Things You Need to Know About Fiber Patch Cable

Low attenuation rate and high immunity to noise. Fiber optic patch cords are immune to electromagnetic interference (EMI) and radio frequency

[Contact Us](#)



## Fiber Optic Patch Cord Performance Testing

In the realm of high-performance optical networks, the humble fiber optic patch cord (or jumper) plays a critical but often underappreciated role.

[Contact Us](#)



## Fiber Insertion Loss and Return Loss: A Complete Guide

Discover what Fiber Insertion Loss means and how it affects signal quality in fiber cables. Get the essential insights now.

[Contact Us](#)

## Contact Us

---

For datasheets, pricing, or custom fiber access solutions, please visit:  
<https://frindel.es>