

Does G652 optical fiber require polarization





Overview

These optical fibres and cables can be used for systems with less stringent polarization mode dispersion (PMD) requirements (e. 652 fibre was originally optimized for use in the 1310 nm wavelength region, but can also be used in. 657 are ITU-T standardized singlemode fiber types used across long-haul, metro, ODN, and FTTH networks. This is the latest revision of a Recommendation that was first created in 1984 and deals with some relatively minor modifications.



Does G652 optical fiber require polarization



Recommendation ITU -T G.652 (08/2024)

Characteristics of a single-mode optical fibre and cable Summary Recommendation ITU-T G.652 describes the geometrical, mechanical and transmission attributes of dispersion wavelength around

[Contact Us](#)

ITU-T Rec. G.652 (11/2016) Characteristics of a single-mode optical

These tables are still available in the 2009 edition of ITU-T G.652 Recommendation. These optical fibres and cables can be used for systems with less stringent polarization mode dispersion (PMD)

[Contact Us](#)



A Comparison of Single Mode Fiber: G.652 vs. G.655

Single mode fiber optic cables are widely used for long-distance communication due to their ability to transmit data over greater distances with

[Contact Us](#)

Understanding the Differences: G.652.D vs G.657.A1 vs

The types of fiber optic cables can seem complex, so it's crucial to choose the right type for your needs. Let's explore the key distinctions between



Optical Fiber Specifications: A Guide by EXA Infrastructure

Optical fiber is a type of high-capacity transmission medium that uses light to carry signals over long distances. specifications are G652, G652D, G655.

[Contact Us](#)



Differences Between G.652, G.655, and G.657 Fiber Types

G.652, G.655, and G.657 are ITU-T standardized singlemode fiber types used across long-haul, metro, ODN, and FTTH networks.

[Contact Us](#)



Characteristics of G.652 Optical Fiber

When revising the G.652 optical fiber standard, it is hoped that the characteristics of the G.652 optical fiber will be comprehensively improved. At least 10Gbit/s long-distance applications

[Contact Us](#)





What Is the Advantage of G657B3 Fiber? Future Trends and Market

Smart city deployments require fiber to navigate lamp posts, traffic cabinets, and building entry points - all extremely tight spaces where G.657.B3's 5mm bend radius is a significant advantage. 3. Ultra

[Contact Us](#)



In-Field Comparison between G.652 and G.655 Optical Fibers for

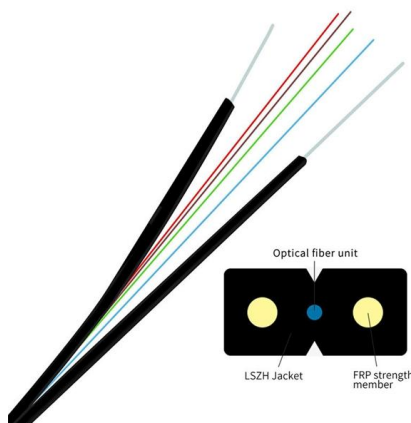
In this letter, we report a field trial between the Points of Presence (POPs) placed in Treviso and in Venezia - Mestre, Italy, exploiting the QuKy commercial polarization-based QKD

[Contact Us](#)

The FOA Reference For Fiber Optics

From ITU G.652 Standard: "Cabled fibre polarization mode dispersion shall be specified on a statistical basis, not on an individual fibre basis. The requirements

[Contact Us](#)



Characterization of polarization mode dispersion (PMD) effects on

In a single mode optical fiber two series of dispersive effects are observed: the chromatic dispersion and the polarization mode dispersion (PMD). The polarization mode dispersion generates

[Contact Us](#)



Theoretical and experimental verification of polarization pulling for G

Verification of polarization pulling achieved in G.652 type fiber by means of co-propagating 1457 nm Raman pump is presented. Performed experiments exploited four fiber spools:

[Contact Us](#)



ITU-T G.652: Single-Mode Optical Fiber Characteristics

ITU-T G.652 Recommendation details single-mode optical fiber and cable characteristics, including geometrical, mechanical, and transmission attributes.

[Contact Us](#)

G.652

G.652 Fiber Applications Long-distance communication: The low attenuation and low dispersion characteristics of G.652 fiber make it the first

[Contact Us](#)



ITU-T Rec. G.652 (04/97) Characteristics of a single-mode optical fibre

This Recommendation covers the geometrical and transmissive properties of single-mode optical fibres and cables whose dispersion and cut-off are not shifted from the 1310 nm wavelength region.

[Contact Us](#)





Itu G652 , PDF , Optical Fiber , Dispersion (Optics)

When required, cabled fibre polarization mode dispersion shall be specified on a statistical basis, not on an individual fibre basis. The requirements pertain only to the aspect of the link calculated from cable

[Contact Us](#)



The difference between G.654 and G.652 optical fiber

G.654 and G.652 are two different types of optical fibers that are commonly used in fiber optic jumpers. While they share many similarities, there

[Contact Us](#)

ITU-T G.652 Single-Mode Fiber Standards , PDF

This document is Recommendation ITU-T G.652 which describes the characteristics of a single-mode optical fiber and cable. It has been revised several times since

[Contact Us](#)



Introduction to G652D Fiber

G652D is a single-mode optical fiber; only one light pattern can travel inside it. It has been a favourite because of its backward compatibility. That

[Contact Us](#)



Characterization of polarization mode dispersion (PMD) effects on G652

In a single mode optical fiber two series of dispersive effects are observed: the chromatic dispersion and the polarization mode dispersion (PMD). The polarization mode dispersion generates

[Contact Us](#)



G652 and G655 Single mode Fiber Optics guide

There are two primary sources of the specification of single-mode optical fiber. One is the ITU-T G.65x series, and the other is IEC 60793-2-50. In

[Contact Us](#)

G.652

What are the Different Types of G.652 Single Mode Optical Fibers? G.652 defines a single-mode fiber grade, but it does not specify different types within that grade.

[Contact Us](#)



What is the Difference Between G657 and G652 Optical

What is the Difference Between G657 and G652 Optical Fibers G.657 optical fibers are also called bending loss-insensitive optical fibers. The G657 Fiber Optic

[Contact Us](#)

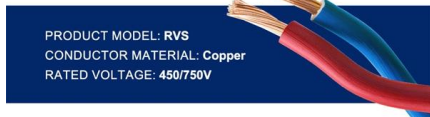
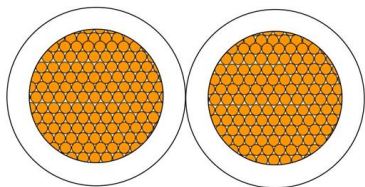


What Is G.652 Fiber? G.652 vs G.652.D, G.652 vs

ITU-T G.652 optical fiber is the most widely used single mode fiber among all the 19 SMF types, which is also called standard SMF. G.652 vs G.657.



[Contact Us](#)



ITU-T RECOMMENDATION

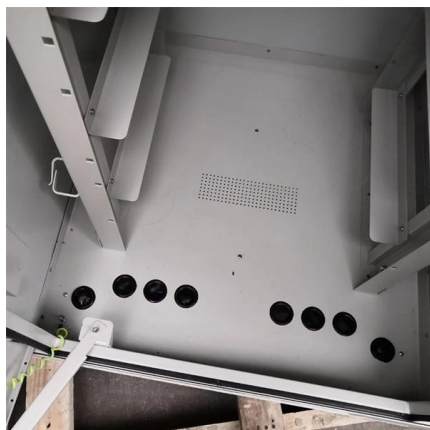
The magnifying optics shall consist of an optical system (e.g., a microscope objective) which magnifies the specimen output near field. The numerical aperture and hence the resolving power of the optics

[Contact Us](#)

The FOA Reference For Fiber Optics

Fiber Characterization Testing For Long Haul, High Speed Fiber Optic Networks: Chromatic Dispersion, Polarization Mode Dispersion and Spectral Attenuation

[Contact Us](#)



Single Mode Fiber: ITU-T Standard G652x

Single Mode Fiber: ITU-T Standard G652x Articles
Single Mode Fiber: ITU-T Standard G652x FS ITU-T Single-mode Optical Fiber by FS / ITU-T As we all

[Contact Us](#)



G.652 Single Mode Fiber vs G.655 Single Mode Fiber

G.652 vs G.655 Single Mode Fiber: What Is the Difference? The above classification of optical fibers according to their main characteristics is

[Contact Us](#)



G.652

Dispersion: G.652 fiber exhibits both chromatic dispersion and polarization mode dispersion. Chromatic dispersion refers to the spreading of optical signals due to different

[Contact Us](#)

Contact Us

For datasheets, pricing, or custom fiber access solutions, please visit:
<https://frindel.es>