

# **Do you have optical modules with a range of 60km**





## Overview

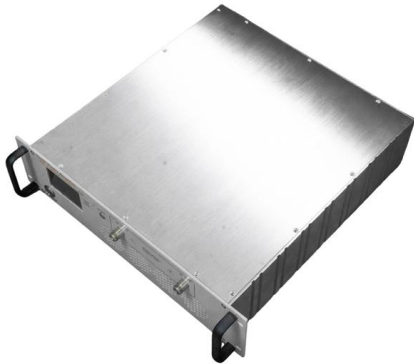
---

Long-distance variants, typically referred to as LX, EX, ZX, or ER/LR SFPs, are engineered with higher optical power budgets and longer wavelength lasers (e. , 1310nm, 1550nm), enabling transmission distances from 10 km up to 80 km or more over single-mode fiber (SMF). SFP (Small Form-factor Pluggable) modules are standardized network transceivers that support a range of data rates (1G, 10G, 25G) and fiber types. When comparing short-range and long-range options, the choice depends heavily on deployment environments. The fiber optic length, connector quality, cleanliness, and proper handling often determine whether a connection is stable or problematic. In this article, we'll show you 10 simple yet extremely effective rules to help you get the maximum range from your SFP+ connections. The NEC's 25G SFP28 BiDi optical transceiver is compatible with the mobile front-haul network, enabling high-capacity and ultra-low-latency 5G communication.



## Do you have optical modules with a range of 60km

---



### 10G SFP+ BiDi Tx1270/Rx1330nm 60KM

SFP+ BiDi 10G LR (Bidirectional Long-Range) Tx1270/Rx1330nm Optical Transceiver Module is a high-performance, single-fiber solution designed for 60 Km. - EN

[Contact Us](#)

### 10GBASE-BX BiDi SFP+ 1330nm-TX/1270nm-RX 60km

10GBASE-BX BiDi SFP+ 1330nm-TX/1270nm-RX 60km DOM Simplex LC/UPC SMF Optical Transceiver Module for FS Switches, Product Specification:Part Number -

[Contact Us](#)



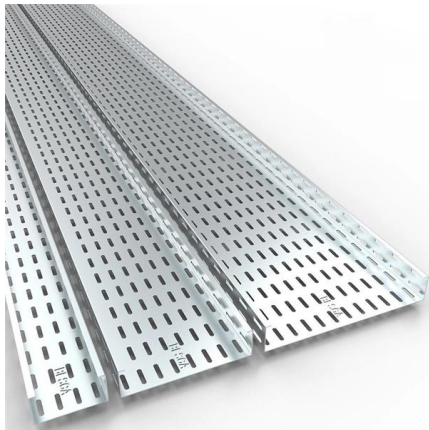
### The Rise of Co-Packaged Optics: A Deep Dive into CPO

A CPO optical module integrates optical and electronic components to boost data center speed, efficiency, and bandwidth while reducing power use.

[Contact Us](#)

### The Essential Guide to BiDi Transceivers: Everything

Bi-Directional (BiDi) Transceiver is a compact optical transceiver module that uses WDM (wavelength division multiplexing) technology and is



### Things You Need to Know About Optical Modules and

Introduction What are optical modules used to build a campus network? What are differences between various optical modules? How should we

[Contact Us](#)



### Cisco Optics , Transform Your Network

Get the highest quality, performance-leading optical transceivers for any network architecture. Find the transceiver model to fit your network.

[Contact Us](#)



### Introduction of 10G SFP+ Optical Modules

While some SFP+ modules are designed to work with a variety of devices, others may be specific to a particular vendor or model. This article is a

[Contact Us](#)



## 25G SFP28 BiDi : Optical Transceiver Module , NEC

We offer a diverse range of options that support transmission distances of 10km, 40km, 60km and 80km respectively. With these features, NEC's 25G SFP28 BiDi

[Contact Us](#)



## GPON OLT SFP Transceiver , Class C+ , 60km Ultra

Ultra-Long Reach (60km): Specialized optics enable transmission distances three times longer than standard GPON modules, ideal for remote subscriber connection.

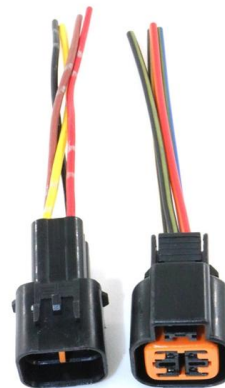
[Contact Us](#)



## 10G-SFP+60KM

All modules satisfy class I laser safety requirements. The transceivers are compatible with SFP Multi-Source Agreement and SFF-8472 digital diagnostics functions.

[Contact Us](#)



## Understanding the Transmission Distance of Optical

Have you ever wondered what the various distance acronyms like SR, DR, FR, LR, ER, and ZR really mean? How do these terms affect your

[Contact Us](#)



## BlueOptics 10G SFP+ Transceiver , How to Achieve Maximum Distance!

Anyone who works with 10G SFP+ transceivers knows that the achievable distance depends on far more factors than just the module used. The fiber optic length, connector quality, cleanliness, and

[Contact Us](#)



## SFP Optical Transceiver Modules for Long Distance: A

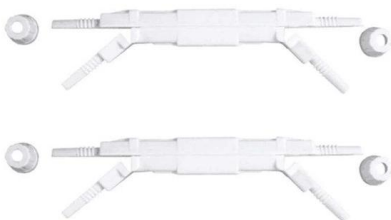
Discover everything you need to know about SFP optical transceiver modules for long-distance fiber transmission. Compare LX, EX, ZX models and

[Contact Us](#)

## What is the maximum distance for SFP?

The maximum distance for an SFP (Small Form-Factor Pluggable) transceiver depends on the type of SFP module, the optical fiber used, and the specific application.

[Contact Us](#)



## BlueOptics 10G SFP+ Transceiver , How to Achieve Maximum Distance!

In this article, we'll show you 10 simple, effective rules to help you get the maximum range from your SFP+ connections: choosing the right module, and fiber, as well as clever network planning.

[Contact Us](#)



**Brocade 10G-SFPP-BXU-60K Compatible 10GBASE**

Brocade 10G-SFPP-BXU-60K Compatible SFP+ transceiver supports up to 60km over OS2 SMF via an LC simplex connector. This 10G BiDi SFP+ transceiver,

[Contact Us](#)



**25G SFP28 BiDi : Optical Transceiver Module , NEC**

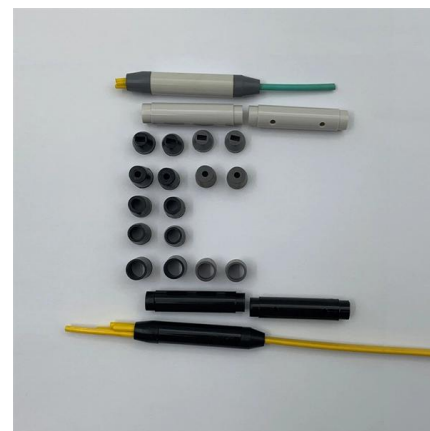
By enabling bidirectional transmission over a single fiber, this module enhances fiber utilization efficiency and can reduce fiber installation costs and fiber rental costs.

[Contact Us](#)

**10G SFP+ BIDI Tx1270/Rx1330nm 60KM**

The STC-80043 is a long-range 10G SFP+ BiDi transceiver designed for single-fiber 10 Gigabit Ethernet transmission up to 60 kilometers. Using 1270nm TX and 1330nm RX wavelengths over single-mode

[Contact Us](#)



**10G Optical Modules: Short-Range vs. Long-Range Comparison Guide**

Understand short-range and long-range 10G optical modules in terms of distance, budget, energy use, and scalability to make the right choice.

[Contact Us](#)



**40g Qsfp+ Er4 40gbase 1310nm 60km Single Mode Duplex LC Ddm**

40g Qsfp+ Er4 40gbase 1310nm 60km Single Mode Duplex LC Ddm Supported Optical Transceiver Modules, Find Details and Price about Qsfp-40g-Er4 40g Qsfp+ from 40g Qsfp+ Er4 40gbase

[Contact Us](#)



**Single Fiber 60 km SFP+ Optical Transceiver: PLANET MTB-LA60**

PLANET compatible MTB-LA60 is SFP+ (Small Form factor Pluggable) Transceiver, operating over Single Fiber Single-Mode Fiber (SMF) optical cable. It has minimum guaranteed optical budget of 21

[Contact Us](#)

**Understanding Transmission Distance: Short-Range vs**

? Understanding Transmission Distance: Short-Range vs Long-Range Optical Modules? !? Do you really need a 10km module for a 300m connection?

[Contact Us](#)



**FTTH GPON SFP distance question : r/networking**

Some fiber links have a 60 KM SFP on one end and a 20 KM SFP on the other end. I'm not sure what issues this will cause either assuming all of the transmit and receive light levels are within spec.

[Contact Us](#)

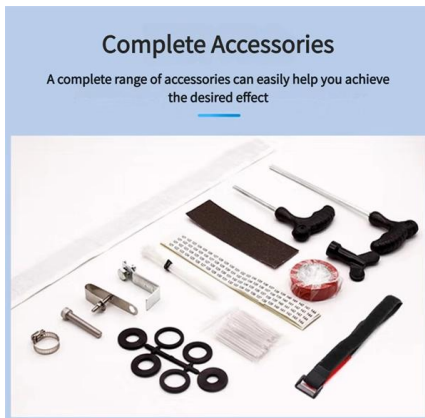


### **Cisco Compatible 10GBASE BiDi SFP+ 1330nm-TX/1270nm-RX 60km**

Cisco Compatible 10GBASE-BX60 SFP+ Transceiver Module (SMF, 1330nm-TX/1270nm-RX, 60km, Simplex LC, DOM) The Cisco compatible SFP+ transceiver supports up to 60km link lengths over



[Contact Us](#)



### **Cisco Compatible 10GBASE BiDi SFP+ 1270nm-TX/1330nm-RX 60km**

Cisco Compatible 10GBASE-BX60 SFP+ Transceiver Module (SMF, 1270nm-TX/1330nm-RX, 60km, Simplex LC, DOM) The Cisco compatible SFP+ transceiver supports up to 60km link lengths over

[Contact Us](#)

## **Contact Us**

---

For datasheets, pricing, or custom fiber access solutions, please visit:  
<https://frindel.es>