

Do optical modules need to be taxed





Do optical modules need to be taxed



Internal Revenue Service Department of the Treasury Number:

A. DAS Installations and Fiber Optic Cables with DAS installations, while other fiber optic cables form independent networks that are connected to cell towers or utility poles or are buried

[Contact Us](#)

LEARN TO CODE Optical Dispensing

INTRODUCTION Challenges in coding are not limited to Evaluation and Management (E/M) documentation requirements, testing services or surgical coding. With the increasing number of

[Contact Us](#)



Optical Center Tax: Navigating the Optical Center Tax

Optical entrepreneurs should use software or tools that can automatically calculate and collect the optical center tax for each sale, based on the sale price, the optical center distance, and

[Contact Us](#)

Optical Center Tax: How Optical Center Taxes Impact Startup Growth

Optical center tax is a term that refers to the taxation of optical products and services, such as eyeglasses, contact lenses, eye exams, and laser eye surgery. Optical center tax can have a



How the Proposed Tariffs by the Trump Administration

Trump administration tariffs' impact on optical industry By Omar Elkhatib, The Vision Council Jan. 8, 2025 The incoming Trump administration's

[Contact Us](#)



What Is an SFP Module? Complete Guide

SFP modules, or Small Form-factor Pluggable modules, are essentially the workhorses of modern networking. They facilitate data

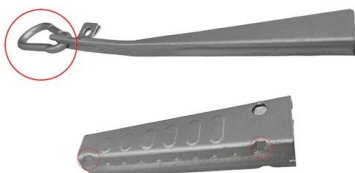
[Contact Us](#)



VATHLT2190

A number of optical practices now separately disclose their charges for the supply of goods (frames and lenses) and the supply of the dispensing

[Contact Us](#)

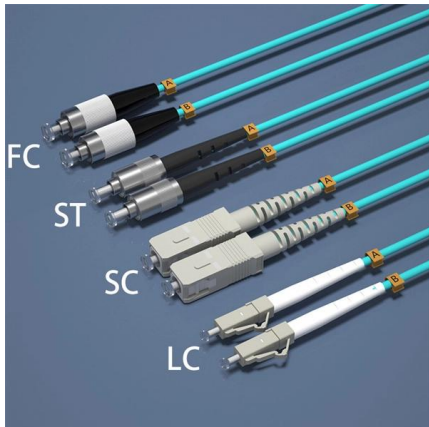
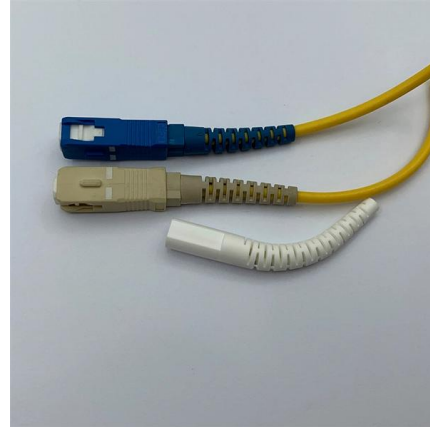




Do I Have to Charge Sales Tax on That? An OD's Guide

Gain a comprehensive understanding of sales tax regulations relevant to optometry practices and resources to find state-specific rules.

[Contact Us](#)



Tax Treatment of Photovoltaic Systems

For the taxation of value added as benefit in kind in connection with the operation of a photovoltaic system, a distinction must be made depending on when the

[Contact Us](#)

How to Choose Optical Modules Correctly?

How Optical Modules Operate Transmitter Optical Sub Assembly (TOSA) The TOSA manages light emission, converting electrical signals to

[Contact Us](#)



Are glasses and contact lenses taxable?

And, in many cases, that sales tax exemption extends to prescription eyewear and contact lenses. Thirty-eight U.S. states either consider prescription

[Contact Us](#)



The Rise of Co-Packaged Optics: A Deep Dive into CPO

A CPO optical module integrates optical and electronic components to boost data center speed, efficiency, and bandwidth while reducing power use.

[Contact Us](#)



Optical Center Tax: Navigating the Optical Center Tax

The tax rates for your optical center of business and each optical activity depend on the tax laws and regulations of the jurisdictions where they are located. You need to consult the relevant

[Contact Us](#)

"Understanding Optical Transceivers: Modules, Fiber

Furthermore, enhanced technology for optical modules with higher energy efficiency and lower dimensions have made optical transceivers more cost

[Contact Us](#)



Tax benefits for the operation of photovoltaic systems

In principle, the operation of a photovoltaic system constitutes a commercial activity that is subject to trade tax. However, operators are granted

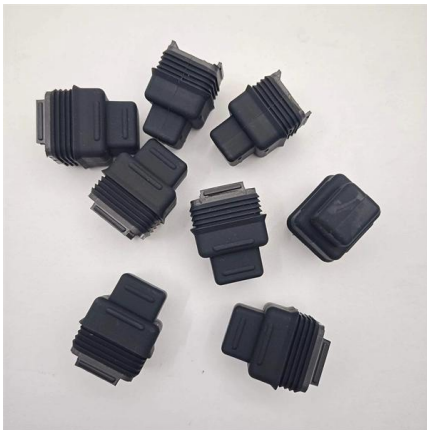
[Contact Us](#)



Optical Center Taxation: Maximizing Deductions: Tax Strategies for

Navigating the labyrinth of taxation can be daunting for optical entrepreneurs. Yet, understanding the nuances of eligible deductions can significantly reduce tax liabilities.

[Contact Us](#)



Optical Center Taxation: From Frames to Forms: Tax Compliance

In this section, we will discuss some of the common tax deductions and credits that optical startups can take advantage of, and how to apply them to your optical center taxation.

[Contact Us](#)

Optical Center Taxation: LensCrafting Success: Tax

Sales Tax and VAT: Most optical centers are subject to standard sales tax, which varies by state or country. In regions with a Value-Added Tax (VAT) system, each stage of the supply chain

[Contact Us](#)



Optical module

An optical module is a typically hot-pluggable optical transceiver used in high-bandwidth data communications applications. Optical modules typically have an electrical interface on the side that

[Contact Us](#)



Things You Need to Know About Optical Modules and

Introduction What are optical modules used to build a campus network? What are differences between various optical modules? How should we

[Contact Us](#)



Understanding Optical Modules: Working Principles,

Explore the working principles, structures, and performance metrics of optical modules, essential components of optical fiber communication systems. Learn

[Contact Us](#)



Tax Treatment of Photovoltaic Systems

Income Tax Treatment For income tax purposes, the operating of a photovoltaic system (consisting mainly of solar modules, inverters, and feed-in meters) with

[Contact Us](#)



Is There Sales Tax on Prescription Glasses & Contact

Learn about varying sales tax rules on prescription glasses & contact lenses across all states. TaxConnex demonstrates its impact on consumers &

[Contact Us](#)



The database is designed to track developments in energy taxation and carbon pricing across a broad set of countries. Carbon pricing instruments, i.e. carbon taxes and emissions trading

[Contact Us](#)



Regulation 1592

Regulation 1592. Eyeglasses and Other Ophthalmic Materials. Reference: Sections 6006 and 6018, Revenue and Taxation Code. (a) Physicians and Surgeons and Optometrists. (1) In General. A

[Contact Us](#)



Sales Tax on Telecommunications Services

Texas customers owe local sales tax if their place of primary use is inside a city, county, special purpose district, or transit authority that imposes sales tax on telecommunications services. Out-of-state

[Contact Us](#)



400G Coherent Optics Guide: ZR, ZR+ & MZR Comparison

Master 400G coherent optics with our comprehensive guide covering ZR, ZR+, MZR variants, reach capabilities, power consumption & deployment

[Contact Us](#)



Ihre Photovoltaikanlage: Weniger Steuern, weniger Bürokratie

Die neuen Regeln betreffen die Umsatzsteuer (seit dem 1. Januar 2023) und die Einkommensteuer (seit dem 1. Januar 2022). Für PV-Anlagen, die nach dem 31.12.2024 in Betrieb genommen wurden,

[Contact Us](#)



Can You Deduct Eyeglasses on Your Taxes? , Laurier

Claiming the METC To claim the METC for eyeglasses and other eligible medical expenses, taxpayers need to complete Schedule 1 of the income

[Contact Us](#)

Solar -- Tax Guide for Green Technology

As a consumer, you owe tax on the cost to you of materials you provide and install in the performance of a construction contract. If the solar components you provide and install are

[Contact Us](#)



Contact Us

For datasheets, pricing, or custom fiber access solutions, please visit:
<https://frindel.es>