

Do core switches need to be connected





Do core switches need to be connected



Core Switch: The Powerhouse of Your Network

Core Switch vs. Distribution Switch:
Understanding the Distinctions Network Layer:
The core layer is characterized by core switches,
which connect

[Contact Us](#)

What is a Core Switch , Functions and Difference over Normal Switch

What is a core switch and how it works? This article builds the basics of this kind of switch for the ones who don't know anything about it. What is a Core Switch? It is a powerful



[Contact Us](#)



Core Switches: The Pillar of Network Infrastructure

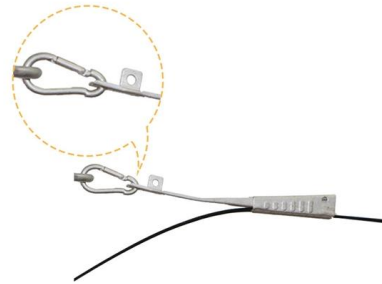
As the network expands, additional switches and devices can be attached without disrupting the core operations of the network, thanks to the

[Contact Us](#)

What Is a Core Switch?

If your organization requires high-speed, always-on network connectivity, a core switch is not a luxury--it's a necessity. Whether you're building a data center, scaling an enterprise network, or

[Contact Us](#)



Difference between core switch and ordinary switch and

In modern computer networks, core switches and ordinary switches are two key network devices, which have significant differences in network architecture and

[Contact Us](#)

What Is a Core Switch? Network Backbone Architecture Guide

While edge switches handle user connectivity and routers manage external internet traffic, the core switch acts as the central nervous system bridging your entire local environment.



[Contact Us](#)

Welcome to Channel Dive , Channel Dive

Welcome to Channel Dive. We're Informa TechTarget's new publication, focused on delivering daily news and analysis for executives at North



[Contact Us](#)



Difference between a core switch and 'normal' switch?

You could also have switch stacks for your users connecting to the core, these would be your campus switches. If you don't have a need for all these layers, then you'd collapse it all into one, which

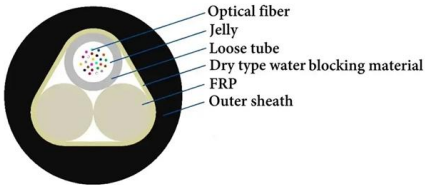
[Contact Us](#)



Solved: Why a coresetch?

I got a simple question - and a lack of a good answer. My manager asked me if we really need a coresetch (like a cisco 4506). Does anyone could

[Contact Us](#)



What is a Core Switch , Functions and Difference over Normal Switch

The core-type layer is made up of multiple core switches that operate at high speeds. Network aggregation switches, on the other hand, connect many networks over a single link.

[Contact Us](#)



What Is a Core Switch in Networking?

Unlike access switches, which connect directly to end-user devices, the core switch focuses on aggregating and routing traffic between other

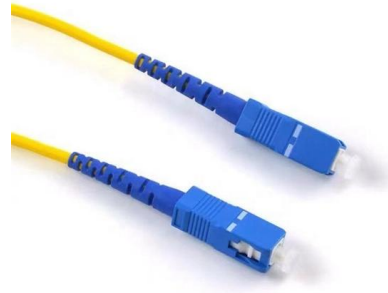
[Contact Us](#)



Core Switch vs Normal Switch: Key Differences Explained

What Are Core and Normal Switches? Core Switch A core switch is the backbone of a network, managing high-speed data traffic between multiple

[Contact Us](#)



Core Switches and Normal Switches: A Practical

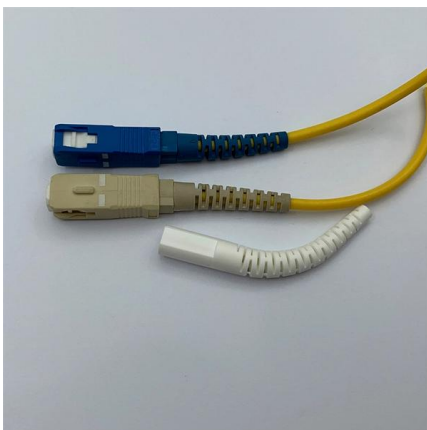
In modern network infrastructure, switches play a pivotal role in connecting devices and facilitating data transfer. However, not all switches are

[Contact Us](#)

Core Switches and Normal Switches: A Practical

Opt for core switches when redundancy, fault tolerance, and high-speed processing are crucial. Choose normal switches for basic connectivity and

[Contact Us](#)



Access Switch vs. Core Switch

Access Switch vs. Core Switch What's the Difference? Access switches are typically used to connect end devices such as computers, printers, and IP phones to the network. They are responsible for

[Contact Us](#)



What Is Core Switch?

The core switch resides at the core layer, connecting multiple distribution layer switches. Its primary function is to switch traffic as quickly and efficiently as possible, minimizing latency and

[Contact Us](#)



Cisco Core vs Access Switches: Key Differences

As a result, a handful of ports is usually enough for a core switch. Meanwhile, access switches often need a larger number of ports, and this is where you will find

[Contact Us](#)

What Is a Core Switch in a Network?

Core switches are optimized for high-speed routing and forwarding, operating at Layer 3 of the network model. They feature high-speed uplinks but have a lower port density because they

[Contact Us](#)



How Many Core In Fiber Optic Cable Do I Need

For example, if you have three optical fiber access switches, you need to have three cores. (actually use a four core optical cable) This is because apart

[Contact Us](#)

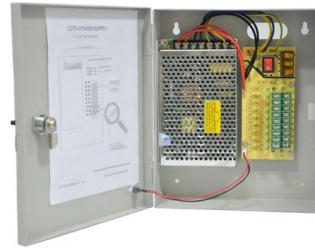
Core Switch vs Access Switch , Definitions



and Key Differences

While the core switch may only be connected with a few distribution switches, the majority of access switches are required to connect a variety of end-user devices, including IP phones, PCs,

[Contact Us](#)



Access VS Distribution VS Core Switch

Core Switch -> Needed in large enterprises, campuses, or data centers where a high-speed backbone is critical.

[Contact Us](#)

Understanding the Core Switch: Key Differences and Uses

Core switches function as the network's backbone by connecting various subsystems to distribution switches for data transfer while maintaining a

[Contact Us](#)



What is a Core Switch?

The core switch operates at the core layer of the network hierarchy. It receives data packets from distribution switches, examines their destination addresses, and then forwards them to

[Contact Us](#)



What is the difference between a core switch and a

We often talk about the core switch, so what is the difference between him and the conventional switch? Let's make a comparison for them today.

[Contact Us](#)



- IP65/IP55 OUTDOOR CABINET
- ALUMINUM
- OUTDOOR ENERGY STORAGE CABINET
- OUTDOOR EQUIPMENT CABINET

What Is a Core Switch?

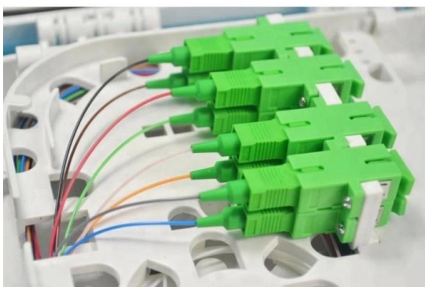
Conclusion: Is It Time for a Core Switch? If your organization requires high-speed, always-on network connectivity, a core switch is not a luxury--it's a necessity.

[Contact Us](#)

What Is a Core Switch in Networking?

What's the difference between a core switch and an access switch? Does every network need a core switch? Can a router be used instead of a core

[Contact Us](#)



Core Switch vs. Distribution Switch vs. Access Switch

Generally, multiple data switches are used at the core layer of a network so that a large amount of data can be routed to the layers in the hierarchy. Another reason

[Contact Us](#)



Contact Us

For datasheets, pricing, or custom fiber access solutions, please visit:
<https://frindel.es>